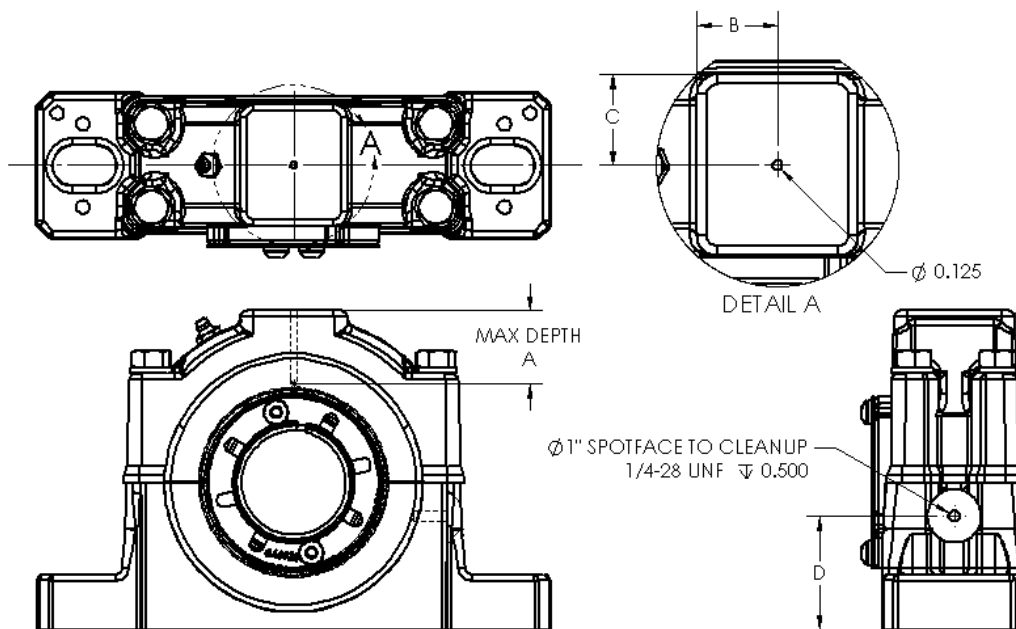


WP0246

Dodge® ISAF mounted bearings: sensor installation recommendations

Dodge Customer/Order Engineering

04-19-2017



Housing Size	Thermocouple			Vibration Probe	
	Max Depth A	B (Ref)	C (Ref)	D	Wall Thickness (Ref)
509	1.02	1.00	1.00		<i>Not Recommended</i>
510	1.17	1.00	1.13		<i>Not Recommended</i>
511	1.34	1.00	1.19	2.13	1.09
513	1.26	1.06	1.25	2.38	1.24
515	1.14	1.06	1.31	2.63	1.24
516	1.33	1.13	1.50	2.88	1.49
517	1.33	1.13	1.50	3.13	1.49
520	1.78	1.25	1.72	3.88	1.55
522	1.60	1.25	2.25	4.31	1.71
526	1.61	1.25	2.38	5.38	2.17
528	1.76	1.25	2.69	5.38	2.03
532	0.78	1.50	2.38	6.06	1.64
534	0.80	1.50	2.56	6.44	1.69
536	1.21	1.50	2.69	6.88	2.24
538	1.21	1.50	2.69	7.25	2.24

EXTERNAL/PUBLIC DOCUMENT

ABB Motors and Mechanical Inc.
 6040 Ponders Court
 Greenville, SC 29615
 Phone: +1 864 284 5700
 Email: DodgeEngineering@abb.com

Notes:

1. Vibration Probe Machining for Reference: 1/4-28 UNF Hole, ~1/2 Deep w/ 1" Spotface to Cleanup.
2. Reference dimensions are subject to casting tolerance, and may vary accordingly.
3. For RTDs w/Thru Holes: Do not bring the RTD probe in full contact with the outer ring of the bearing. Doing so may interfere with lubrication or expansion.