

Installation Instruction For Baldor Belt Grinder Guard Kit #A641

SAFETY NOTICE:

WARNING statements describe conditions that may lead to personnel injury including potentially fatal injuries if the machine is not properly used and warnings are not properly followed.

Caution statements describe conditions that may lead to equipment damage.

WARNING:

Do not operate this grinder until you are sure that you are completely familiar with the safe operation of the grinder, all accessories and safety equipment. Improper use can lead to severe injury. This manual defines proper use of this equipment. Before using this equipment for any other use, please consult Baldor. Contact Baldor if you do not understand any procedure or operation concerning this grinder or this manual.

WARNING:

Prevent electrical shock hazard and accidental machine operation. Always disconnect grinder from the power source before servicing, changing accessories (such as wheels, tool rest, spark arrestor, etc.) or before performing maintenance.

WARNING:

Avoid accidental starting. Make sure switch is in "OFF" position before connecting to power source.

WARNING:

Be sure the system is properly grounded before applying power. Do not apply power before you ensure that grounds are connected. Electrical shock can cause serious or fatal injury. Follow the National Electrical Code (NEC) and local codes for the safe installation of this equipment.

WARNING:

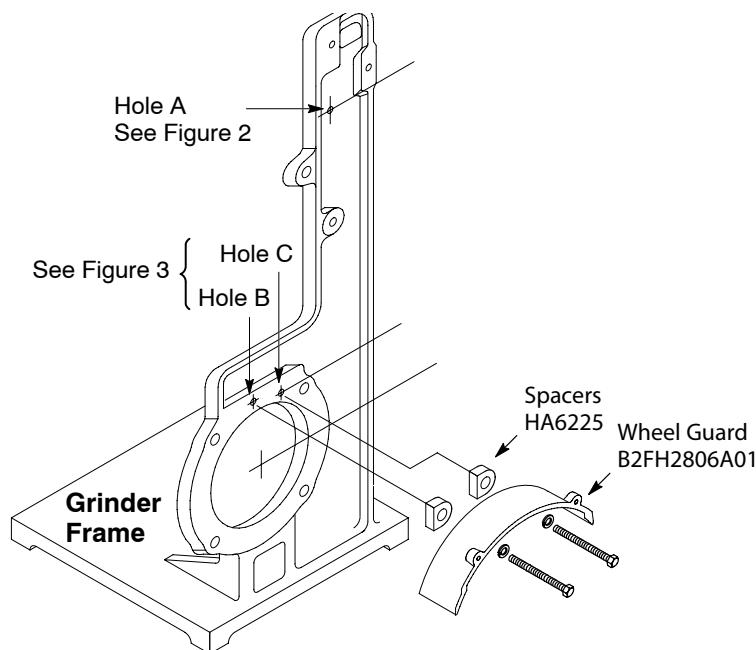
Check damaged parts. Before further use of the grinder, a guard or other part that is damaged should be carefully checked to assure that it will operate properly and perform its intended function. Check for alignment of moving parts, binding of moving parts, breakage of parts, mounting, and any other conditions that may affect its operation. A guard or other part that is damaged should be properly repaired or replaced.

WARNING:

Always use safety glasses with side shields (or full face shield) when operating grinder. Do not use ordinary eyeglasses. Also use face or dust mask if cutting operation is dusty.

Procedure:

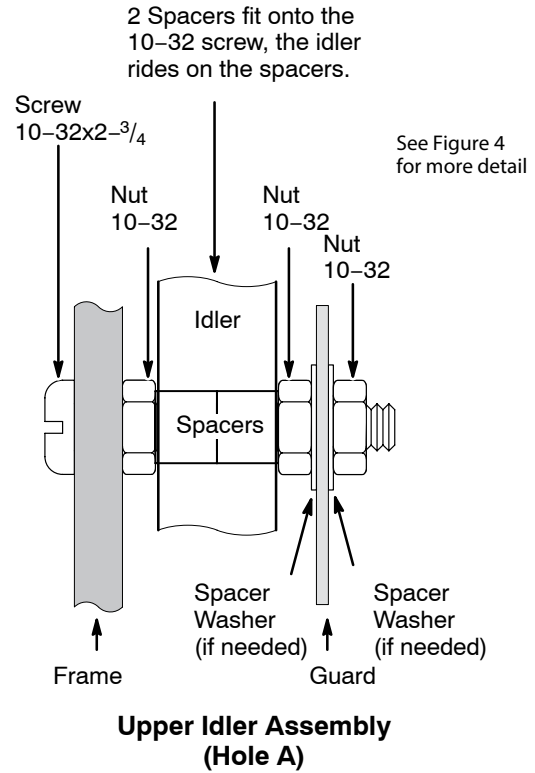
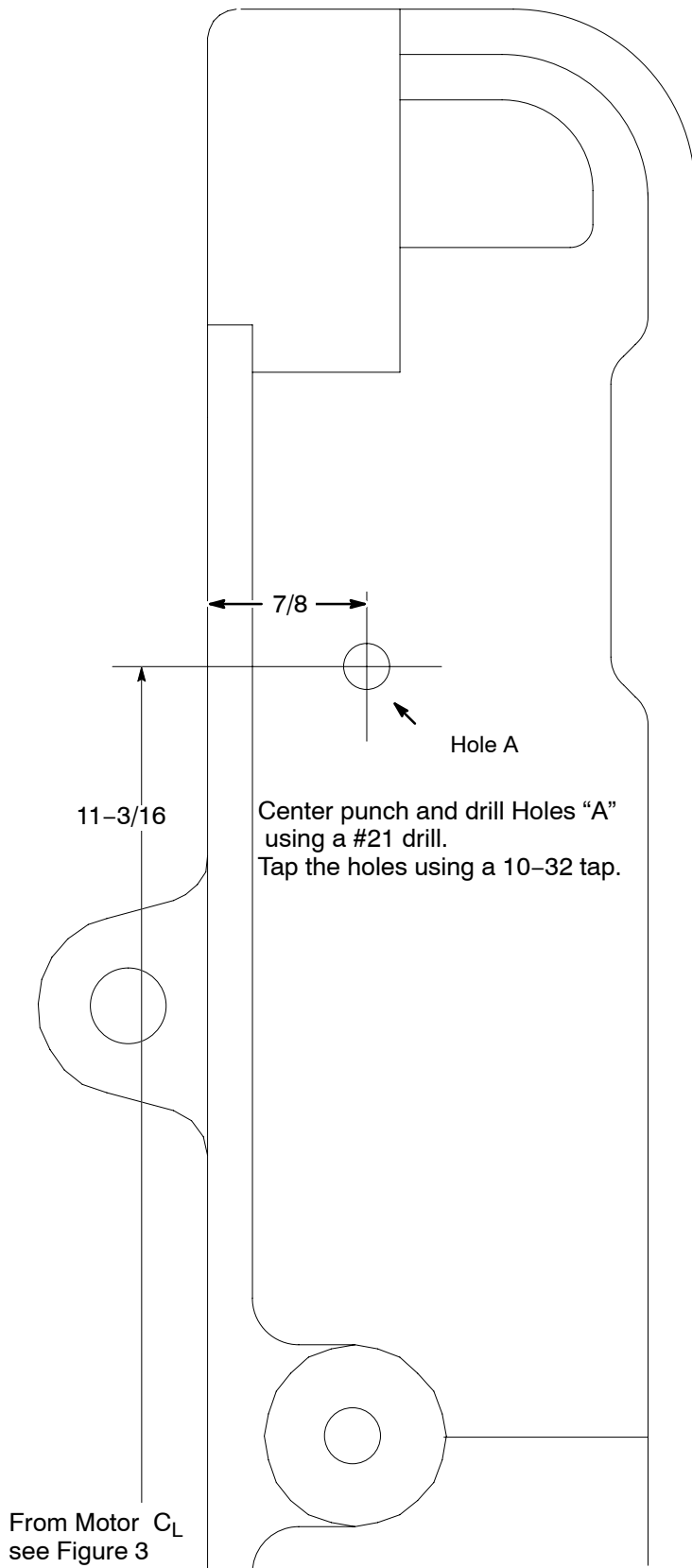
1. Disconnect power source from grinder and accessories.
2. Remove belt.
3. Remove Contact Wheel from motor shaft. Note location of washers.
4. Remove Idler Wheel.
5. Remove motor from the grinder frame (four bolts, washers and nuts secure it to frame).
6. Locate Holes "A", "B" and "C" shown in Figure 1. Use Figure 2 and 3 as templates to locate the holes.
 - a. Center punch and drill Hole "A" using a #21 tap drill. Tap the hole using a 10-32 tap.
 - b. Center punch and drill Holes "B" and "C" using a #7 tap drill. Tap the holes using a 1/4-20 tap.
7. Install the motor to the grinder frame (four bolts, washers and nuts secure it to frame).
8. Install the wheel guard B2FH2806A01 at holes B and C using 2 spacers HA6225, 1/4-20 x 2-1/4 screws and lock washers as shown in Figure 1.
9. Install the Contact Wheel onto the motor shaft. Be sure key is in motor shaft and assemble washers in same locations as when removed in step 3. Be sure wheel and guard do not contact.

Figure 1 Hole Locations

Procedure: Continued

10. Assemble the Upper Idler onto the frame Hole "A" as shown in Figure 2. Spacers may be used to adjust the guard position so it does not contact the idler. Be sure wheel and guard do not contact.
11. Install new Idler Wheel Guard using original screws. See Figure 4.

Figure 2 Hole A Detail Template



Procedure: Continued

12. Install Grinding Belt on Contact and Idler wheels.
13. Install Idler Wheel Guard Cover using Thumb Screws and Lock Washers.
14. Install Contact Wheel Guard Cover using Thumb Screws and Lock Washers.
15. Install Rear Belt Guard by removing thumbscrew of Contact Wheel Cover.
Place rear belt guard on the outside of the cover and position the upper slot of rear belt guard on the upper idler axle screw.
16. Secure the Rear Belt Guard to the upper idler axle screw with a flat washer, lock washer and nut.
17. Secure the Rear Belt Guard to the Contact Wheel Guard cover with the thumbscrew removed in step 15.
18. Verify that all mounting hardware is tight and secure before applying power and operating the belt grinder.
19. Apply power. Verify that the wheels and belt have proper clearance to move freely without rubbing on the guards or other parts.
20. Adjust belt tracking manually before operating the belt grinder.

Figure 3 Holes B and C Detail Template

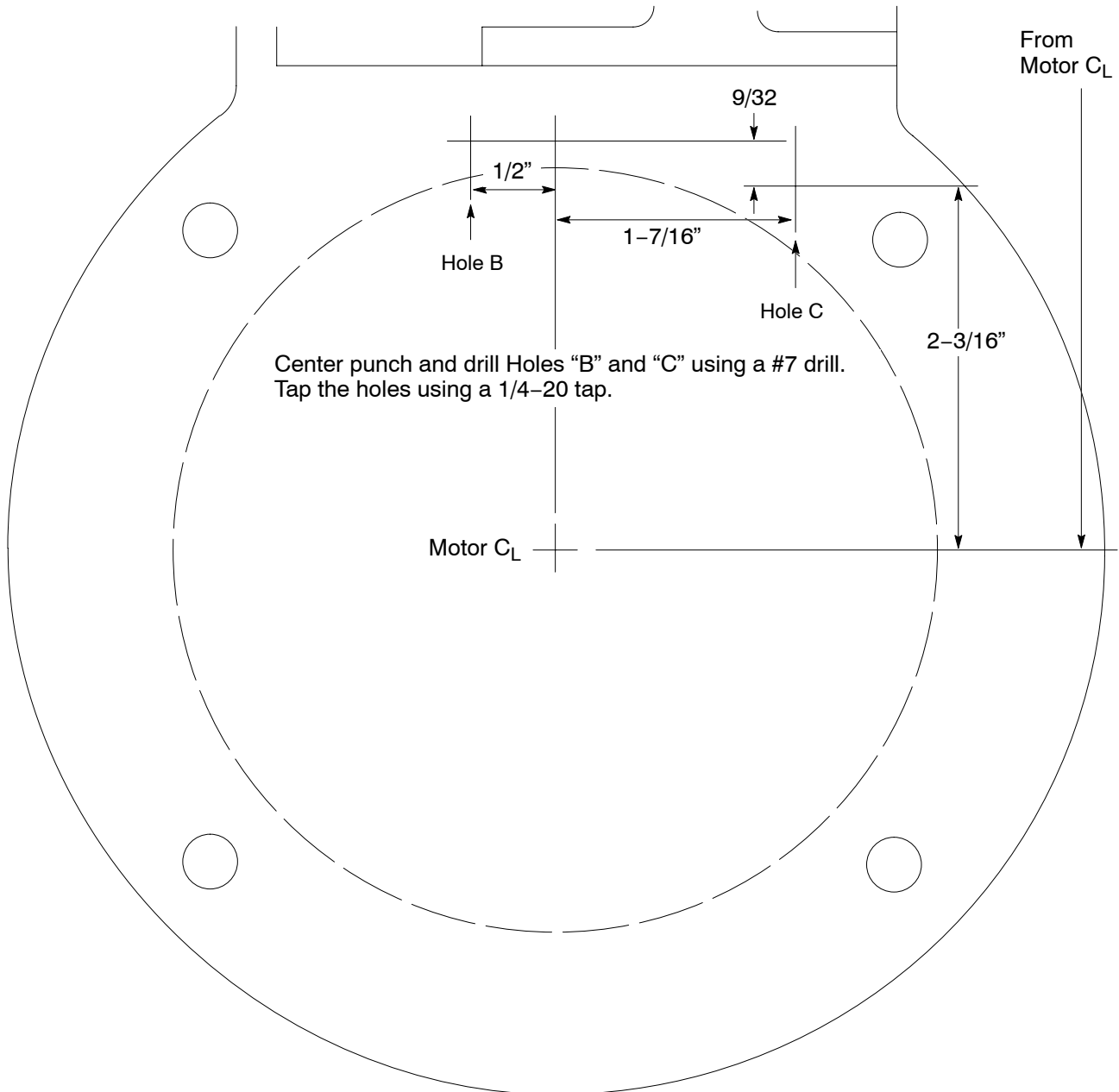
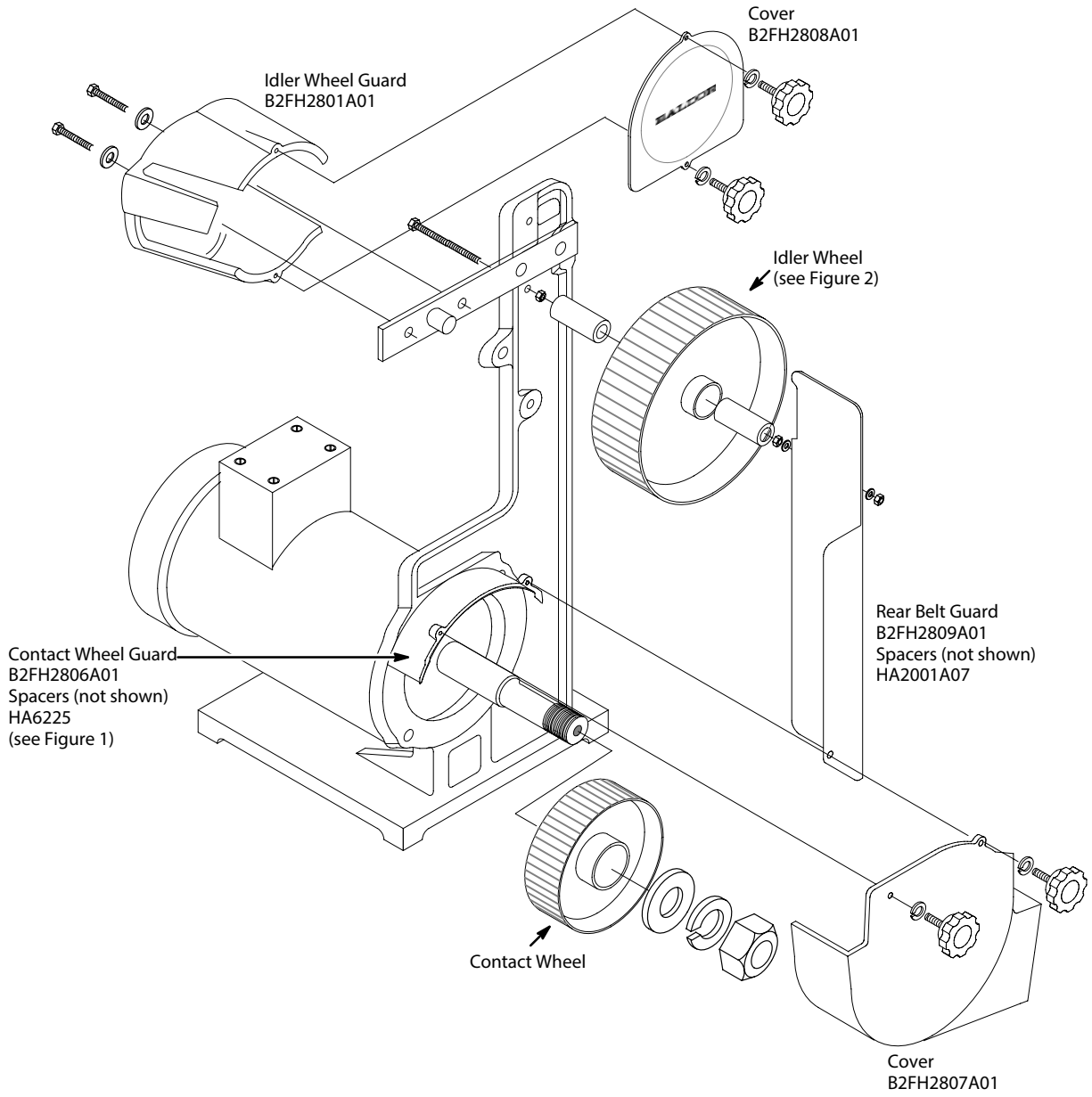


Figure 4 Guard Kit Assembly Diagram



Baldor Electric Company

P.O. Box 2400, Fort Smith, AR 72902-2400 U.S.A., Ph: (1) 479.646.4711, Fax (1) 479.648.5792, International Fax (1) 479.648.5895

www.baldor.com