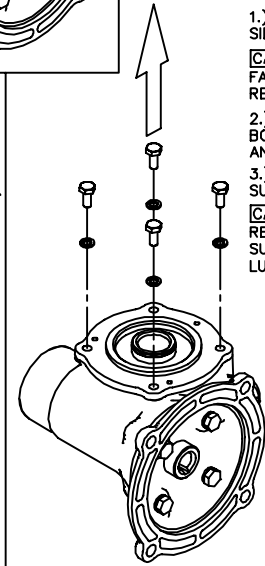


H-BOX



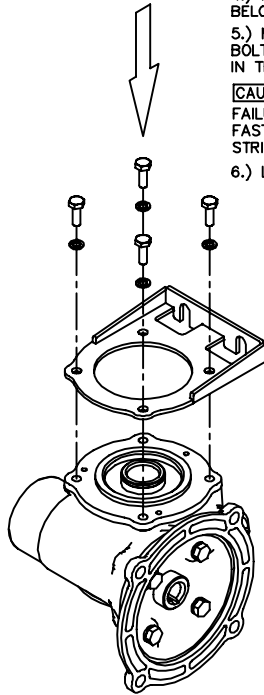
**\*\*INSTALL ONE SIDE AT A TIME**  
 1.) LAY UNIT WITH INSTALLATION SIDE FACING UP.

**[CAUTION]**  
 FAILURE TO DO SO WILL RESULT IN LUBRICANT LOSS.

2.) REMOVE FOUR EXISTING BOLTS AND LOCK WASHERS AND DISCARD.

3.) DO NOT REMOVE BEARING SUPPORT.

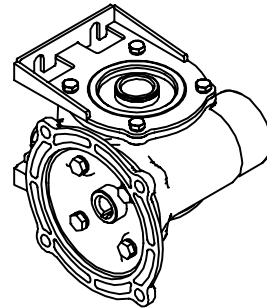
**[CAUTION]**  
 REMOVAL OF BEARING SUPPORT MAY RESULT IN LUBRICANT LOSS.



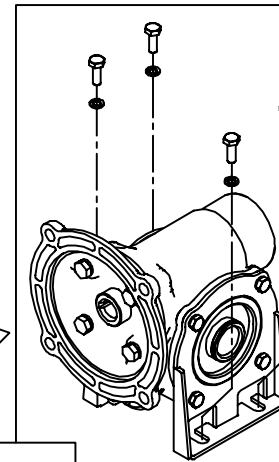
4.) POSITION BASE AS SHOWN BELOW.  
 5.) MOUNT BASE WITH THE FOUR BOLTS AND WASHERS PROVIDED IN THE KIT.

**[CAUTION]**  
 FAILURE TO USE PROVIDED FASTENERS MAY RESULT IN STRIPPED THREADS.

6.) LOOSLEY TIGHTEN BOLTS.



7.) ONCE COMPLETE, REPEAT PROCESS TO OTHER SIDE.



8.) SET ASSEMBLY ON MOUNTING SURFACE AND LOOSELY INSTALL FOUR MOUNTING BOLTS.

9.) UNIFORMLY TIGHTEN EIGHT BEARING SUPPORT BOLTS AS FOLLOWS.  
 LUBRICATED: 41inlb MAXIMUM.  
 UNLUBRICATED: 72inlb MAXIMUM.

**[CAUTION]**  
 OVERTIGHTENING OF THE BOLTS MAY RESULT IN STRIPPED THREADS.  
 9.) TIGHTEN BASE MOUNTING BOLTS TO FASTENER SPECIFICATIONS.

REV. DESC: NEW

REV. LTR: -

VERSION: 00

TDR: 000000396810

**BALDOR ELECTRIC Co.**

LT0066A17

FILE: \CKA\00031\052

REVISED: 12: 44: 46 11/14/2006

MTL: -

BY: CKBRISO

H-BOX BASE KIT, ASSEMBLY INSTRUCTIONS