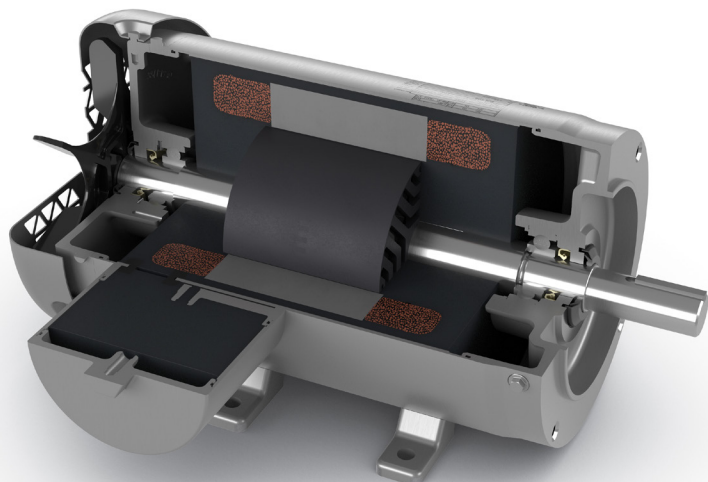


## Baldor-Reliance® Food Safe SP5+ motors

Ultra-premium (IE5+) efficiency in IP69 washdown



The Baldor-Reliance® Food Safe SP5+ is the world's first IP69 ultra-premium efficient motor. Engineered for seamless use with VFDs, it utilizes cutting-edge rotor technology to achieve peak energy savings, maximum protection and reliability in food processing environments. Easy to clean and helps reduce energy costs.

### BALDOR • RELIANCE

#### Baldor-Reliance® Food Safe motor:

Industry-leading stainless-steel enclosure is the safest and cleanest washdown motor available in the market!

#### SP5+ technology

- Innovative (FASR – Ferrite assisted synchronous reluctance) rotor technology
- 10:1 constant torque, 10:1 variable torque
- Internal shaft grounding for bearing protection against shaft currents

#### Lean and Clean:

- IP69 Food Safe washdown
- Cleanability: Easy to sanitize and clean
- Smooth surfaces that won't trap contaminants
- Totally encapsulated motor
- Sealed for life bearings – easy to maintain
- Fit for purpose- intended for the high temperature and high pressure washdown applications

#### Standard Features:

- 1-10Hp, three-phase variable speed motor
- Available in C-Face foot mounted and footless designs
- IP69 for high pressure, high temperature washdown
- Internal shaft grounding
- 360-degree rotatable conduit box
- 300 series stainless steel
- No crevices for food to collect
- O-ring sealed endplates & conduit box
- Removable condensate drains in each endplate
- Encapsulated, color-coded leads
- Internal & external shaft sealing
- Laser marked nameplate
- For inverter use only per NEMA MG1 Part 31.4.4.2
- Class H insulation system
- 3-year warranty
- Ultra Premium (IE5+) motor efficiency

# Food Safe SP5+ stainless-steel motor

## 1 – 10Hp, three phase motors

**230/460 voltage for use only with VFD for variable speed applications.**



C-face

Hp	Base Speed RPM	C.P. Speed RPM	NEMA Frame	Encl.	Catalog number	List price	Disc. Sym.	"C" Dim.	Aprx. Wt. (lb)	Full Load Eff. (%)	Voltage	Full Load Amps
1	1800	4000	145TC	TENV	<b>CFSSP5M3546T-E-G</b>	3,840	ECF	12.86	44	88.5	230/460	1.2/2.4
2	1800	4000	145TC	TENV	<b>CFSSP5M3558T-E-G</b>	4,432	ECF	12.86	44	89.5	230/460	2.3/4.6
3	1800	4000	145TC	TENV	<b>CFSSP5M3551T-E-G</b>	4,596	ECF	15.11	50	91	230/460	3.5/7
	1800	4000	184TC	TENV	<b>CFSSP5M3611T-E-G</b>	5,226	ECF	15.54	83	90.2	230/460	3.7/7.4
5	1800	4000	145TC	TEFC	<b>CFSSP5M3564T-E-G</b>	4,819	ECF	16.28	70	93	230/460	5.2/10.4
	1800	4000	184TC	TEFC	<b>CFSSP5M3615T-E-G</b>	5,759	ECF	17.4	96	91.7	230/460	5.3/10.6
7 1/2	1800	3000	184TC	TEFC	<b>CFSSP5M3674T-E-G</b>	6,538	ECF	18.93	142	93	230/460	8.8/17.6
	1800	3000	215TC	TEFC	<b>CFSSP5M3710T-E-G</b>	7,166	ECF	19.4	162	93.6	230/460	8.7/17.4
10	1800	3000	215TC	TEFC	<b>CFSSP5M3714T-E-G</b>	8,498	ECF	20.59	132	94.5	230/460	11/22



C-face, footless

Hp	Base Speed RPM	C.P. Speed RPM	NEMA Frame	Encl.	Catalog number	List price	Disc. Sym.	"C" Dim.	Aprx. Wt. (lb)	Full Load Eff. (%)	Voltage	Full Load Amps
1	1800	4000	145TC	TENV	<b>VFSSP5M3546T-E-G</b>	3,714	ECF	12.86	44	88.5	230/460	1.2/2.4
2	1800	4000	145TC	TENV	<b>VFSSP5M3558T-E-G</b>	4,286	ECF	12.86	44	89.5	230/460	2.3/4.6
3	1800	4000	145TC	TENV	<b>VFSSP5M3651T-E-G</b>	4,444	ECF	15.11	50	91	230/460	3.5/7
	1800	4000	184TC	TENV	<b>VFSSP5M3611T-E-G</b>	5,054	ECF	15.54	83	90.2	230/460	3.7/7.4
5	1800	4000	145TC	TEFC	<b>VFSSP5M3564T-E-G</b>	4,660	ECF	16.28	70	93	230/460	5.2/10.4
	1800	4000	184TC	TEFC	<b>VFSSP5M3615T-E-G</b>	5,569	ECF	17.4	96	91.7	230/460	5.3/10.6
7 1/2	1800	3000	184TC	TEFC	<b>VFSSP5M3674T-E-G</b>	6,323	ECF	18.93	142	93	230/460	8.8/17.6
	1800	3000	215TC	TEFC	<b>VFSSP5M3710T-E-G</b>	6,930	ECF	19.4	162	93.6	230/460	8.7/17.4
10	1800	3000	215TC	TEFC	<b>VFSSP5M3714T-E-G</b>	8,218	ECF	20.59	132	94.5	230/460	11/22