

Dodge Large-Bore ISAF Pillow Blocks feature integral, hydraulically-assisted, adapter-mounted installation and removal systems.

Designed to reduce total cost of ownership, they are factory assembled, sealed and lubricated. Inner units are replaceable.

PATENTED ADAPTER MOUNTING SYSTEM

Features and Benefits:

- Patented integral hydraulically-assisted mount
- Quick installation and removal
- Automatic, accurate clearance setting without feeler gauges
- Full shaft contact reduces or eliminates fretting corrosion
- Built-in hydraulic piston tightens the bearing on the shaft for easy installation
- Built-in hydraulic piston loosens the bearing from the shaft for easy removal
- Lockplates keep the locknuts tight for dependable gripping power
- Normal installation and removal of ISAF can be accomplished in 15 minutes or less
- Four-bolt pillow blocks 5-7/16" and up (Housing sizes 532 through 080)



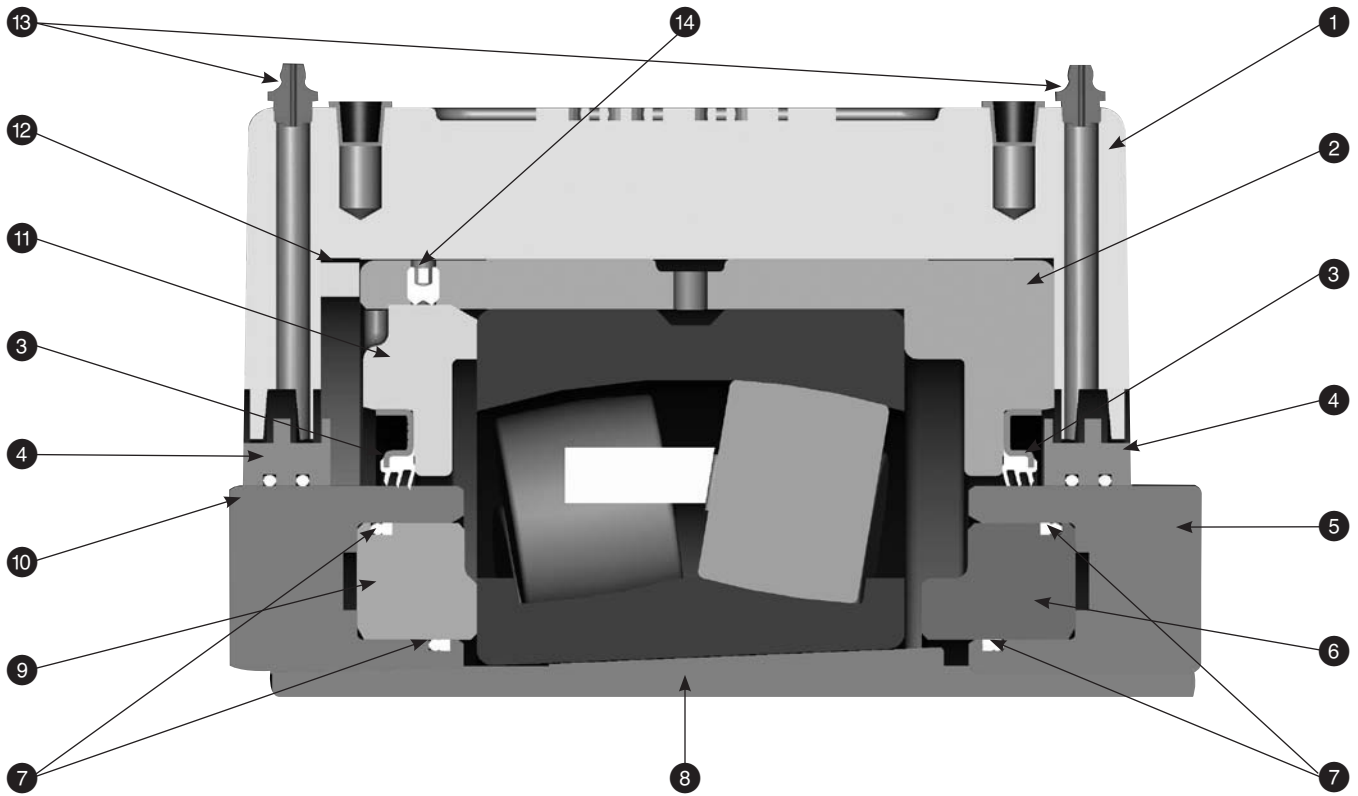
HOW MUCH IS YOUR ASSEMBLY TIME WORTH?

Hydraulic ISAF pillow blocks are interchangeable with other SAF style pillow blocks.



Hydraulic ISAF	SAF
One package, shaft ready	3 or more packages, user assembled
Ductile iron housing	Cast iron housing
Automatic clearance setting	Requires feeler gauges for clearance setting
100% seal contact and pressure	Seals in the housing, lose effectiveness when misaligned
Greased at the factory	You pack the grease and clean the mess
Grease retained near rollers	Grease migrates out to housing cavity away from rollers
Reduced grease consumption	Large cavity to fill with grease
Factory sealed	Subject to on-site contamination
Easy mount and dismount	Difficult removal from shaft
< 15 minutes total assembly time	> 60 minutes total assembly time

HYDRAULIC ISAF



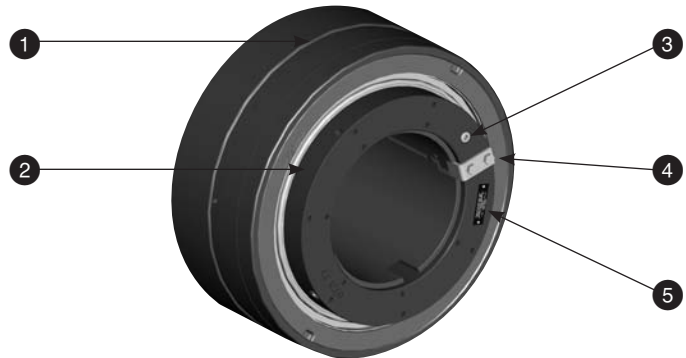
1	Pillow Block Housing	8	Adapter
2	Inner Unit	9	Mount Piston
3	Triple Lip Seal	10	Mount Nut
4	Aux. Seal	11	Adjusting Nut
5	Dismount Nut	12	Stab Ring
6	Dismount Piston	13	Lube Fitting (Aux. Seal)
7	O-rings & Backup Rings	14	Adjusting Nut Retaining Screw

Nomenclature

P4B	515	ISAF	207	R or RE	HYD
Housing Style	Housing Size	Bearing Type	Size	Other Data	Mounting
P4B = Pillow Block 4-Bolt Base	"5xx" for 222 series bearings or "0xx" for 230 series bearings; interchangeable with SAF style housings	ISAF = Imperial SAF	Inches and 16ths 8 = 8 and 07 = 7/16" or 807 = 8 7/16" 200M = 200 Millimeters	E = EXPANSION if E does not appear bearing is a non-expansion type R = Trident Triple-Lip Rubbing Seal	Built-in hydraulic assist

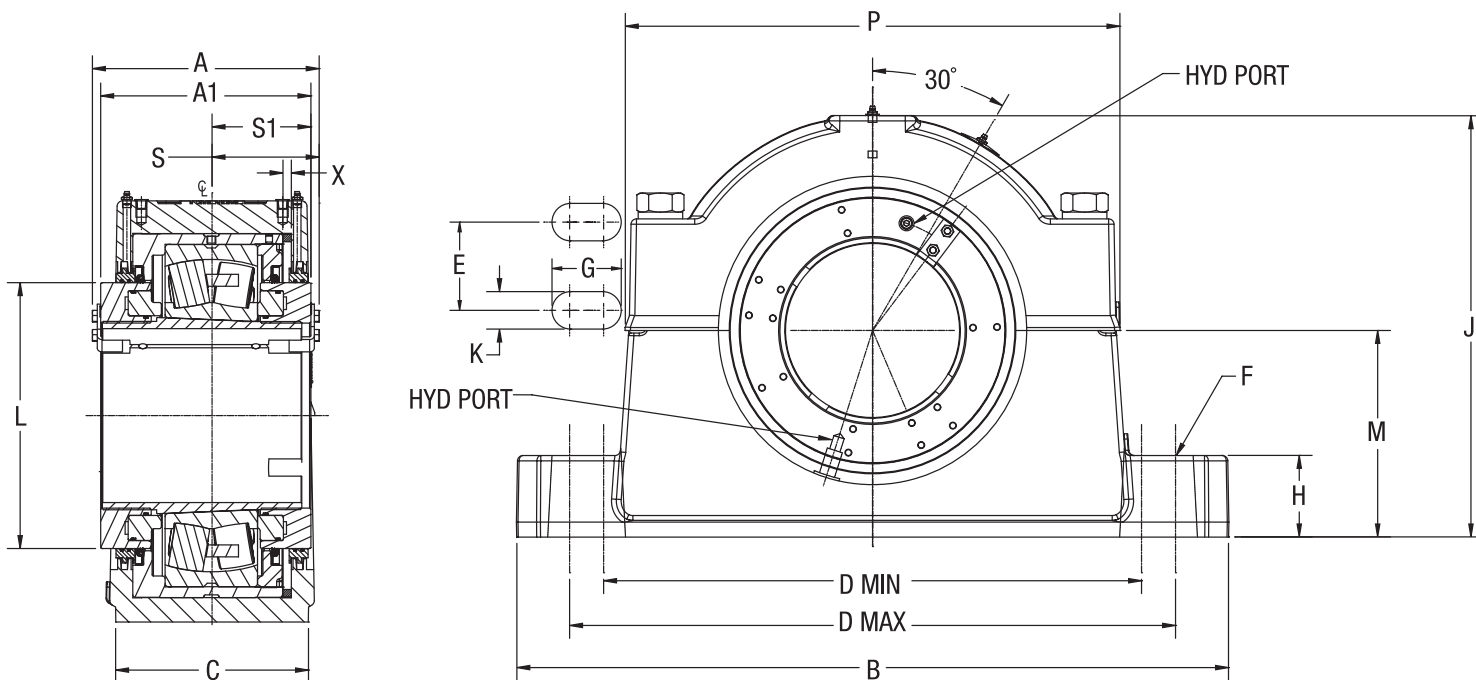
INNER UNIT

1	W33 Lube Groove (3 Lube Holes Spaced at 120°)
2	Rotation Assist Holes x 3
3	Face Hydraulic Port-Additional hydraulic port located on the nut OD 180° from the face port
4	Lock Clip and Bolts
5	Mount Nut Identification Plate



An online installation video is available at
http://www.dodge-pt.com/movie/video/isaf/PRV3003_ISAF.wmv

ISAF PILLOW BLOCK HYDRAULIC



Hydraulic Assist ISAF Pillow Block Dimensions

Shaft Size	SAF Series	Bearing Series	A	A1	B	C	D		E	F Bolts	G	H	J	K	L	M	P	S	S1	X
							Min	Max												
5-7/16" 5-1/2" 140mm	532	22232K	9.59	8.94	21.66	6.25	17.38	19.25	3.75	1	2.06	2.34	13.82	1.12	9.68	6.69	16.38	4.67	4.34	0.38
5-15/16" 6" 150mm	534	22234K	9.87	9.22	24.75	6.75	19.38	21.63	4.25	1	2.25	2.87	14.56	1.12	10.19	7.06	17.38	4.76	4.44	0.38
6-7/16" 6-1/2" 160mm	536	22236K	9.72	9.07	26.75	7.13	20.88	23.63	4.63	1	2.50	3.00	15.25	1.12	10.45	7.50	18.38	4.61	4.29	0.38
6-15/16" 7" 170mm	538	22238K	9.95	9.31	28.00	7.50	21.63	24.38	4.50	1-1/4	2.75	3.13	16.37	1.38	10.96	7.88	19.38	4.73	4.41	0.38
7-1/2" 7-15/16 8" 200mm	544	22244K	10.43	9.67	32.75	8.88	24.75	27.88	5.25	1-1.2	3.18	3.75	19.38	1.62	12.23	9.50	22.75	4.93	4.55	0.38
8-7/16" 8-1/2" 8-15/16" 9" 220mm	048	23048K	10.07	9.31	28.75	8.00	22.50	25.00	5.00	1-1/4	2.63	3.38	17.34	1.38	12.24	8.25	20.88	4.79	4.41	0.38
9-15/16" 10" 10-7/16" 10-1/2" 260mm	056	23056K	10.81	10.05	34.25	9.00	26.25	29.50	5.50	1-1/2	3.25	4.00	20.12	1.62	14.28	9.88	23.88	5.30	4.92	0.38
10-15/16" 11" 280mm	060	23060K	11.12	10.36	38.25	14.75	31.63	34.63	9.00	1-5/8	3.25	3.75	23.93	1.76	15.30	12.00	27.87	5.32	4.94	0.38
12-7/16" 12-1/2" 320mm	068	23068K	11.68	10.84	39.00	15.25	32.00	34.00	10.00	1-7/8	3.00	4.56	24.50	2.00	17.32	12.00	28.81	5.79	5.37	0.38
13-15/16" 14" 360mm	076	23076K	12.73	11.81	41.75	15.75	35.00	36.50	10.50	2	2.87	4.50	26.58	2.12	18.48	12.81	29.50	6.05	5.59	0.38
15" 380mm	080	23080K	13.19	12.27	46.00	17.13	39.25	40.75	11.00	2	2.87	5.75	29.00	2.12	19.49	14.50	33.56	6.28	5.82	0.38

Special bore sizes, including metric bores, are also available. Consult Dodge for availability.

