

ABB and Baldor•Reliance Motors & Drives

Pulp & Paper Processes:

- Wet / Press Sections
- Dryer Section
- Calendar Section



Forest Products Processes:

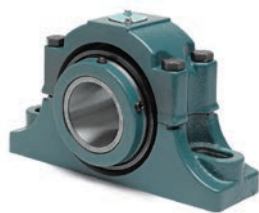
- Cranes / Hoists
- Log Transport
- Induced Draft Fans
- Power Generation



Baldor•Dodge Mechanical Power Transmission

Pulp & Paper Processes:

- Fans / Pumps
- Winders
- Dryer Guide Rolls
- Repulper



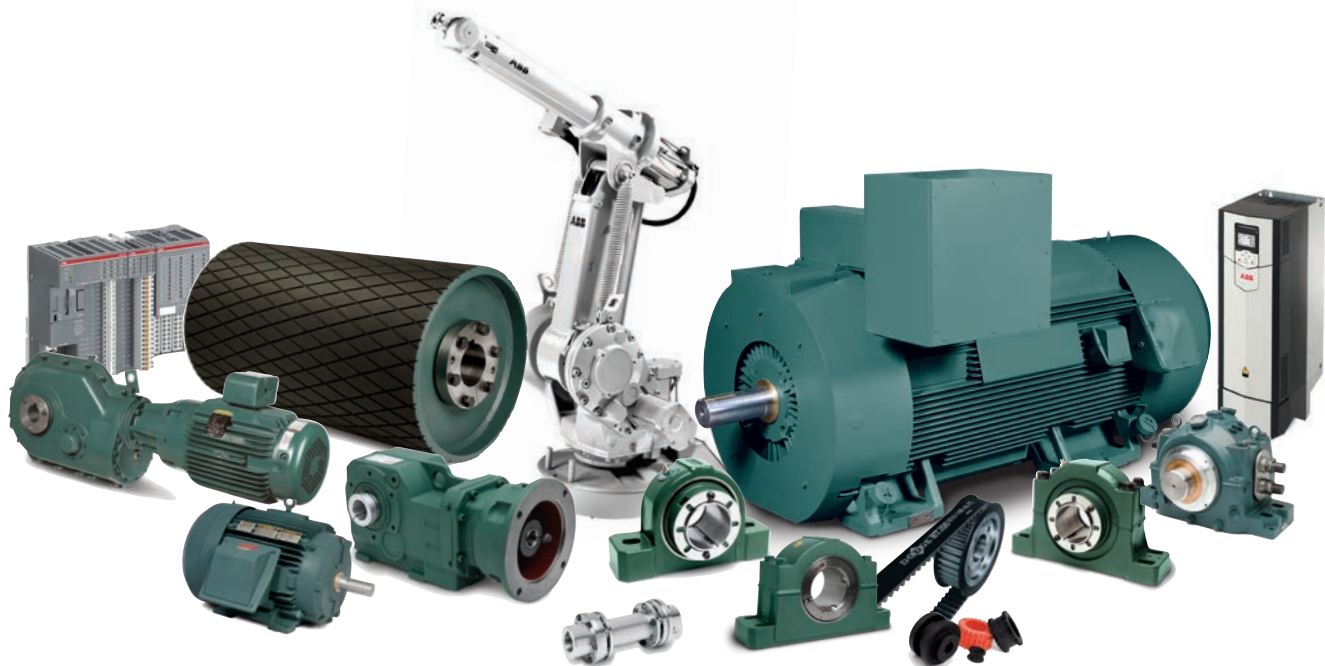
Forest Products Processes:

- Log / Material Conveyors
- Saws
- Debarker



Dependable Products for the Paper & Forest Products Industry

Typical Equipment & Processes	ABB and Baldor Motor & Drive Solutions (Commonly used - Other products may apply)	Baldor•Dodge Solutions (Commonly used - Other products may apply)
Log Deck Conveyors	V*S Master Motors ACS880 Wall Mounted Drives	S-2000 Bearings GRID-LIGN Couplings MTA Shaft Mounted Reducers
Belted Fan Applications	Low Voltage IEEE-841 Motors ACS880 Drives	V-Belt Sheaves Imperial Bearings
Chippers	Medium Voltage IEEE-841 Motors ACS880 Drives	Synchronous Belts & Pulleys Imperial ISAF Bearings
Induced Draft Fans	Low or Medium Voltage IEEE-841 Motors ACS880 Drives	Sleevoil Bearings & Dodge Cool Lube System Gear, Disc, or Para-Flex Couplings
Resin Blenders	RPM AC Motors Low Voltage Drives	D-FLEX Elastomeric Couplings Imperial Bearings
Feed Pumps	Medium Voltage Induction Motors Medium Voltage ACS Drives	Disc or Gear Couplings
Pulpers	Low or Medium Voltage IEEE-841 Motors ACS880 Drives	MagnaGear ISAF or USAF Bearings V-Belt Sheaves or Synchronous Pulleys Gear Couplings



BALDOR
A MEMBER OF THE ABB GROUP

Baldor Electric Company • P.O. Box 2400 • Fort Smith, AR 72902-2400 U.S.A. • Ph: (1) 479.646.4711

Baldor - Dodge

6040 Ponders Court • Greenville, SC 29615-4617 U.S.A. • Ph: (1) 864.297.4800

www.baldor.com