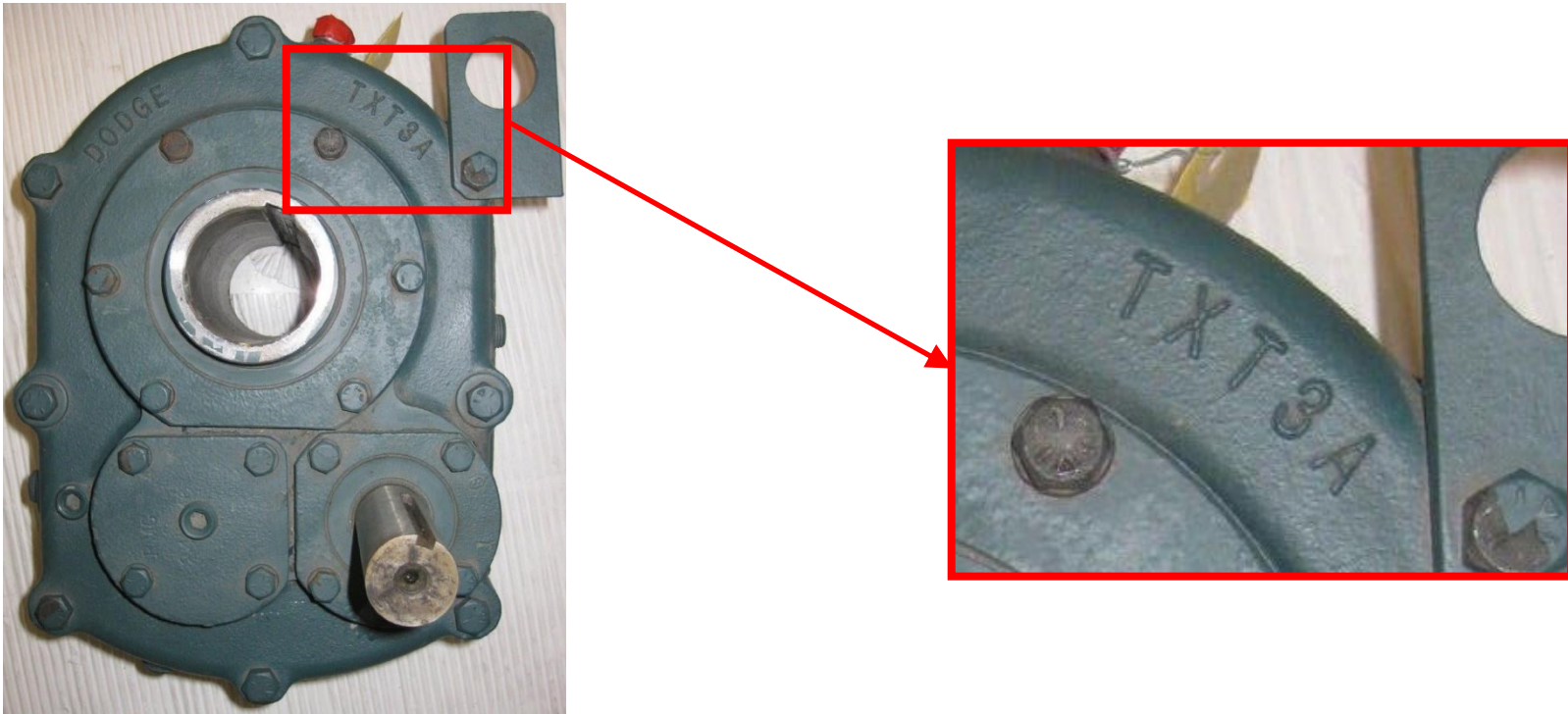


Baldor•Dodge TXT: Identifying Case Size and Revision

C.O. Engineering - Gearing
October 23, 2015



Reducer size and revision level can be determined by locating the raised lettering cast into the housing around the output hub. The number following 'TXT' indicates the case size. Depending on the time period during which the reducer was manufactured, there may be a letter following the case size (typically A, B, or C). This indicates the revision level of the reducer, and should be provided along with the case size when seeking technical assistance or ordering replacement parts.