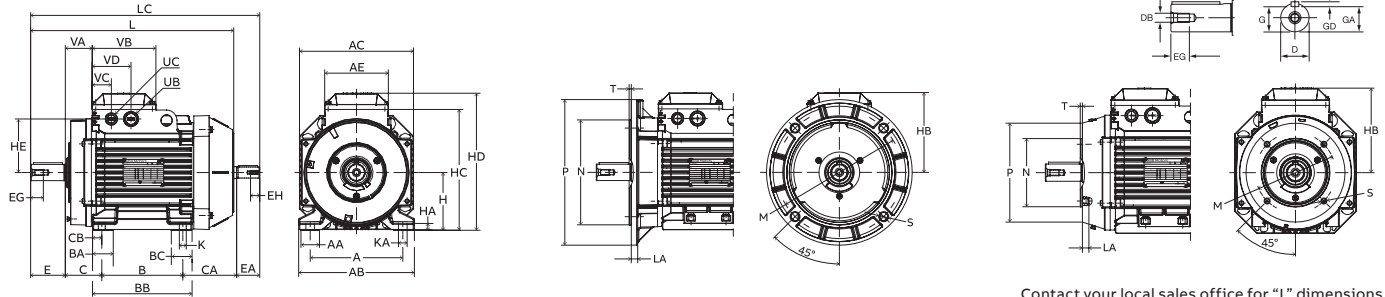




IEC quick reference chart

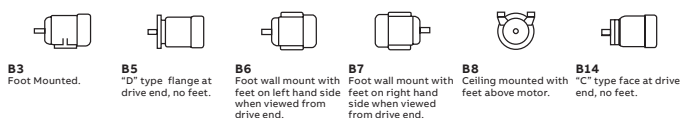


Contact your local sales office for "L" dimensions.

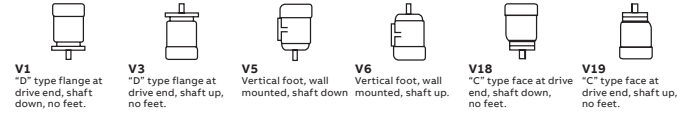
IEC Frame	Foot Mounted				Shaft				B5 Flange					B14 Face					
	A	B	B ¹	H	D	E	DB	EG	LA	M	N	P	S	T	M	N	P	S	T
63	100mm 3.94"	80mm 3.15"	-	63mm 2.48"	11mm 0.43"	23mm 0.91"	M4	10mm 0.39"	10mm 0.39"	115mm 4.53"	95mm 3.74"	120mm 4.72"	7mm 0.28"	3mm 0.12"	75mm 2.95"	60mm 2.36"	90mm 3.54"	M5	2.5mm 0.10"
71	112mm 4.41"	90mm 3.54"	-	71mm 2.80"	14mm 0.55"	30mm 1.18"	M5	12.5mm 0.49"	9mm 0.35"	130mm 5.12"	110mm 4.33"	160mm 6.30"	10mm 0.39"	3.5mm 0.14"	85mm 3.35"	70mm 2.76"	105mm 4.13"	M6	2.5mm 0.10"
80	125mm 4.92"	100mm 3.94"	-	80mm 3.15"	19mm 0.75"	40mm 1.57"	M6	16mm 0.63"	10mm 0.39"	165mm 6.50"	130mm 5.12"	200mm 7.87"	12mm 0.47"	3.5mm 0.14"	100mm 3.94"	80mm 3.15"	120mm 4.72"	M6	3mm 0.12"
90S	140mm 5.51"	100mm 3.94"	-	90mm 3.54"	24mm 0.94"	50mm 1.97"	M8	19mm 0.75"	10mm 0.39"	165mm 6.50"	130mm 5.12"	200mm 7.87"	12mm 0.47"	3.5mm 0.14"	115mm 4.53"	95mm 3.74"	140mm 5.51"	M8	3mm 0.12"
90L	140mm 5.51"	125mm 4.92"	-	90mm 3.54"	24mm 0.94"	50mm 1.97"	M8	19mm 0.75"	10mm 0.39"	165mm 6.50"	130mm 5.12"	200mm 7.87"	12mm 0.47"	3.5mm 0.14"	115mm 4.53"	95mm 3.74"	140mm 5.51"	M8	3mm 0.12"
100	160mm 6.30"	140mm 5.51"	-	100mm 3.94"	28mm 1.10"	60mm 2.36"	M10	22mm 0.87"	11mm 0.43"	215mm 8.46"	180mm 7.09"	250mm 9.84"	15mm 0.59"	4mm 0.16"	130mm 5.12"	110mm 4.33"	160mm 6.30"	M8	3.5mm 0.14"
112	190mm 7.48"	140mm 5.51"	-	112mm 4.41"	28mm 1.10"	60mm 2.36"	M10	22mm 0.87"	11mm 0.43"	215mm 8.46"	180mm 7.09"	250mm 9.84"	15mm 0.59"	4mm 0.16"	130mm 5.12"	110mm 4.33"	160mm 6.30"	M8	3.5mm 0.14"
132	216mm 8.50"	140mm 5.51"	178mm 7.01"	132mm 5.20"	38mm 1.50"	80mm 3.15"	M12	28mm 1.10"	12.5mm 0.49"	265mm 10.43"	230mm 9.06"	300mm 11.81"	15mm 0.59"	4mm 0.16"	165mm 6.50"	130mm 5.12"	200mm 7.87"	M10	3.5mm 0.14"
160	254mm 10.00"	210mm 8.27"	254mm 10.00"	160mm 6.30"	42mm 1.65"	110mm 4.33"	M16	36mm 1.42"	20mm 0.79"	300mm 11.81"	250mm 9.84"	350mm 13.78"	19mm 0.75"	5mm 0.20"	215mm 8.46"	180mm 7.09"	250mm 9.84"	M12	4mm 0.16"
180	279mm 10.98"	241mm 9.49"	279mm 10.98"	180mm 7.09"	48mm 1.89"	110mm 4.33"	M16	36mm 1.42"	20mm 0.79"	300mm 11.81"	250mm 9.84"	350mm 13.78"	19mm 0.75"	5mm 0.20"	-	-	-	-	-
200	318mm 12.52"	267mm 10.51"	305mm 12.01"	200mm 7.87"	55mm 2.17"	110mm 4.33"	M20	42mm 1.65"	20mm 0.79"	350mm 13.78"	300mm 11.81"	400mm 15.75"	19mm 0.75"	5mm 0.20"	-	-	-	-	-
225 S	356mm 14.02"	286mm 11.26"	311mm 12.24"	225mm 8.86"	55mm 2.17"	110mm 4.33"	M20	42mm 1.65"	20mm 0.79"	400mm 15.75"	350mm 13.78"	450mm 17.72"	19mm 0.75"	5mm 0.20"	-	-	-	-	-
225 M	356mm 14.02"	286mm 11.26"	311mm 12.24"	225mm 8.86"	60mm 2.36"	140mm 5.51"	M20	42mm 1.65"	20mm 0.79"	400mm 15.75"	350mm 13.78"	450mm 17.72"	19mm 0.75"	5mm 0.20"	-	-	-	-	-
250 S	406mm 15.98"	311mm 12.24"	349mm 13.74"	250mm 9.84"	60mm 2.36"	140mm 5.51"	M20	42mm 1.65"	24mm 0.94"	500mm 19.69"	450mm 17.72"	550mm 21.65"	19mm 0.75"	5mm 0.20"	-	-	-	-	-
250 M	406mm 15.98"	311mm 12.24"	349mm 13.74"	250mm 9.84"	65mm 2.56"	140mm 5.51"	M20	42mm 1.65"	24mm 0.94"	500mm 19.69"	450mm 17.72"	550mm 21.65"	19mm 0.75"	5mm 0.20"	-	-	-	-	-
280 S	457mm 17.99"	368mm 14.49"	419mm 16.50"	280mm 11.02"	65mm 2.56"	140mm 5.51"	M20	42mm 1.65"	23mm 0.91"	500mm 19.69"	450mm 17.72"	550mm 21.65"	18mm 0.71"	5mm 0.20"	-	-	-	-	-
280 M	457mm 17.99"	368mm 14.49"	419mm 16.50"	280mm 11.02"	75mm 2.95"	140mm 5.51"	M20	42mm 1.65"	23mm 0.91"	500mm 19.69"	450mm 17.72"	550mm 21.65"	18mm 0.71"	5mm 0.20"	-	-	-	-	-
315 S, 2p	508mm 20"	406mm 16"	457mm 18"	315mm 12.4"	65mm 2.56"	140mm 5.51"	M20	40mm 1.57"	25mm 0.98"	600mm 23.62"	550mm 21.65"	660mm 25.98"	23mm 0.91"	6mm 0.24"	-	-	-	-	-
315 S, 4p-8p	508mm 20"	406mm 16"	457mm 18"	315mm 12.4"	80mm 3.15"	170mm 6.69"	M20	40mm 1.57"	25mm 0.98"	600mm 23.62"	550mm 21.65"	660mm 25.98"	23mm 0.91"	6mm 0.24"	-	-	-	-	-
315 M, 2p	508mm 20"	457mm 18"	508mm 20"	315mm 12.4"	65mm 2.56"	140mm 5.51"	M20	40mm 1.57"	25mm 0.98"	600mm 23.62"	550mm 21.65"	660mm 25.98"	23mm 0.91"	6mm 0.24"	-	-	-	-	-
315 M, 4-8p	508mm 20"	457mm 18"	508mm 20"	315mm 12.4"	90mm 3.54"	170mm 6.69"	M24	48mm 1.89"	25mm 0.98"	600mm 23.62"	550mm 21.65"	660mm 25.98"	23mm 0.91"	6mm 0.24"	-	-	-	-	-
355 S, 2p	610mm 24.02"	500mm 19.69"	560mm 22.05"	355mm 13.98"	70mm 2.76"	140mm 5.51"	M20	42mm 1.65"	35mm 1.38"	740mm 29.13"	680mm 26.77"	800mm 31.50"	23mm 0.91"	6mm 0.24"	-	-	-	-	-
355 S, 4-8p	610mm 24.02"	500mm 19.69"	560mm 22.05"	355mm 13.98"	100mm 3.94"	210mm 8.27"	M24	51mm 2.01"	35mm 1.38"	740mm 29.13"	680mm 26.77"	800mm 31.50"	23mm 0.91"	6mm 0.24"	-	-	-	-	-
355 M, 2p	610mm 24.02"	560mm 22.05"	630mm 24.80"	355mm 13.98"	70mm 2.76"	140mm 5.51"	M20	42mm 1.65"	35mm 1.38"	740mm 29.13"	680mm 26.77"	800mm 31.50"	23mm 0.91"	6mm 0.24"	-	-	-	-	-
355 M, 4-8p	610mm 24.02"	560mm 22.05"	630mm 24.80"	355mm 13.98"	100mm 3.94"	210mm 8.27"	M24	51mm 2.01"	35mm 1.38"	740mm 29.13"	680mm 26.77"	800mm 31.50"	23mm 0.91"	6mm 0.24"	-	-	-	-	-
355 L, 2p	610mm 24.02"	630mm 24.80"	710mm 27.95"	355mm 13.98"	70mm 2.76"	140mm 5.51"	M20	42mm 1.65"	35mm 1.38"	740mm 29.13"	680mm 26.77"	800mm 31.50"	23mm 0.91"	6mm 0.24"	-	-	-	-	-
355 L, 4-8p	610mm 24.02"	630mm 24.80"	710mm 27.95"	355mm 13.98"	100mm 3.94"	210mm 8.27"	M24	51mm 2.01"	35mm 1.38"	740mm 29.13"	680mm 26.77"	800mm 31.50"	23mm 0.91"	6mm 0.24"	-	-	-	-	-

Legend: 1 mm = .03937", 1" = 25.40 mm

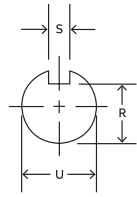
Horizontal Shaft Arrangements



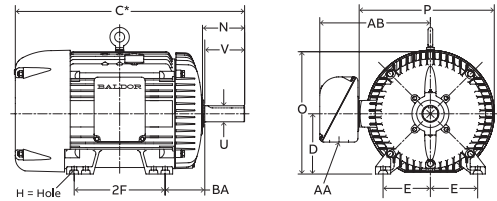
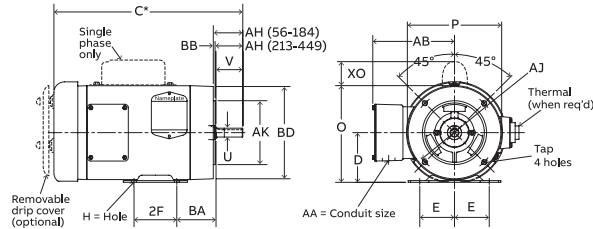
Vertical Shaft Arrangements



NEMA quick reference chart



NEMA Shaft (U)	Keyseat Dimensions (R, S)		NEMA Shaft (U)	Keyseat Dimensions (R, S)	
	(R)	(S)		(R)	(S)
3/8	21/64	FLAT	1-7/8	1-19/32	1/2
1/2	29/64	FLAT	2-1/8	1-27/32	1/2
5/8	33/64	3/16	2-3/8	2-1/64	5/8
7/8	49/64	3/16	2-1/2	2-3/16	5/8
1-1/8	63/64	1/4	2-7/8	2-29/64	3/4
1-3/8	1-13/64	5/16	3-3/8	2-7/8	7/8
1-5/8	1-13/32	3/8	3-7/8	3-5/16	1



Drawings represent standard TEFC general purpose motors.
 *Dimensions are for reference only.

*Contact your local sales office for "C" Dimensions.
 Dimensions - N, O, P, AB and XO are specific to Baldor-Reliance®.

NEMA Frame	D	E	2F	H	N	O	P	U	V	AA	AB	AH	AJ	AK	BA	BB	BD	XO	TAP		
42	2-5/8	1-3/4	1-11/16	9/32 Slot	1-1/2	5	4-11/16	3/8	1-1/8	3/8	4-1/32	1-5/16	3-3/4	3	2-1/16	1/8	4-5/8	1-9/16	1/4-20		
48	3	2-1/8	2-3/4	11/32 Slot	1-7/8	5-7/8	5-11/16	1/2	1-1/2	1/2	4-3/8	1-11/16	3-3/4	3	2-1/2	1/8	5-5/8	2-1/4	1/4-20		
56	3-1/2	2-7/16	3	11/32 Slot	2-7/16	6-7/8	6-5/8	5/8	1-7/8	1/2	5	2-1/16	5-7/8	4-1/2	2-3/4	1/8	6-1/2	2-1/4	3/8-16		
143T	3-1/2	2-3/4	4	11/32 Slot	2-1/8	6-7/8	6-5/8	7/8	2-1/4	3/4	5-1/4	2-1/8	5-7/8	4-1/2	2-1/4	1/8	6-1/2	2-1/4	3/8-16		
145T					2-1/2																
182			4-1/2		2-11/16			7/8	2-1/4			2-1/8	5-7/8	4-1/2		1/8	6-1/2		3/8-16		
184	4-1/2	3-3/4	5-1/2	13/32	2-11/16	8-11/16	7-7/8	7/8	2-1/4	3/4	5-7/8	2-1/8	5-7/8	4-1/2	2-3/4	1/8	6-1/2	2-3/8	3/8-16		
182T			4-1/2		3-9/16			1-1/8	2-3/4			2-5/8	7-1/4	8-1/2		1/4	9		1/2-13		
184T			5-1/2		3-9/16			1-1/8	2-3/4			2-5/8	7-1/4	8-1/2		1/4	9		1/2-13		
213			5-1/2		3-1/2			1-1/8	3			2-3/4									
215			7		3-7/8			1-1/8	3-3/8	1	7-3/8	2-3/4	7-1/4	8-1/2	3-1/2						
213T	5-1/4	4-1/4	5-1/2	13/32	3-7/8	10-1/4	9-9/16	1-3/8	3-3/8			2-3/4			3-1/8						
215T			7		3-7/8			1-3/8	3-3/8			2-3/4			3-1/8						
254U			8-1/4		4-1/16			1-3/8	3-3/4			3-1/2									
256U			10		4-1/16			1-3/8	3-3/4			3-1/2									
254T	6-1/4	5	8-1/4	17/32	4-5/16	12-7/8	12-15/16	1-5/8	4	1-1/4	9-5/8	2-1/8	7-1/4	8-1/2	4-1/4	1/4	10		1/2-13		
256T			10		4-5/16			1-5/8	4			2-1/8									
284U			9-1/2		5-1/8			1-5/8	4-7/8			3-3/4									
286U			11		5-1/8			1-5/8	4-7/8			3-3/4									
284T	7	5-1/2	9-1/2	17/32	4-7/8	14-5/8	14-5/8	1-7/8	4-5/8	1-1/2	13-1/8	2-1/8	9	10-1/2	4-3/4	1/4	11-1/4		1/2-13		
286T			11		4-7/8			1-7/8	4-5/8			2-1/8									
284TS			9-1/2		3-3/8			1-5/8	3-1/4			3									
286TS			11		3-3/8			1-5/8	3-1/4			3									
324U			10-1/2		5-7/8			1-7/8	5-5/8			5-3/8									
326U			12		5-7/8			1-7/8	5-5/8			5-3/8									
324T	8	6-1/4	10-1/2	21/32	5-1/2	16-1/2	16-1/2	2-1/8	5-1/4	2	14-1/8	5	11	12-1/2	5-1/4	1/4	13-3/8		5/8-11		
326T			12		5-1/2			2-1/8	5-1/4			5									
324TS			10-1/2		3-15/16			1-7/8	3-3/4			3-1/2									
326TS			12		3-15/16			1-7/8	3-3/4			3-1/2									
364U			11-1/4		6-3/4			2-1/8	6-3/8			18									
365U			12-1/4		6-3/4			2-1/8	6-3/8			18									
364T	9	7	11-1/4	21/32	6-1/4	18-1/2	19-1/2	2-3/8	5-7/8	3	18-1/16	5-5/8	11	12-1/2	5-7/8	1/4	13-3/8		5/8-11		
365T			12-1/4		6-1/4			2-3/8	5-7/8			18-1/16									
364TS			11-1/4		4			1-7/8	3-3/4			18-1/16									
365TS			12-1/4		4			1-7/8	3-3/4			18-1/16									
404U			12-1/4		7-3/16			2-3/8	7-1/8			19-1/4									
405U			13-3/4		7-3/16			2-3/8	7-1/8			19-1/4									
404T	10	8	12-1/4	13/16	7-5/16	21-5/16	22-1/2	2-7/8	7-1/4	3	19-5/16	7	11	12-1/2	6-5/8	1/4	13-7/8		5/8-11		
405T			13-3/4		7-5/16			2-7/8	7-1/4			7									
404TS			12-1/4		4-1/2			2-1/8	4-1/4			19-5/16									
405TS			13-3/4		4-1/2			2-1/8	4-1/4			19-5/16									
444U			14-1/2		8-5/8	24-24	27-57	2-7/8	8-5/8	3	22-68	8-3/8									
445U			16-1/2		8-5/8	24-24	27-57	2-7/8	8-5/8	3	22-68	8-3/8									
444T			14-1/2		8-9/16	24-24	27-57	3-3/8	8-3/8	4	22-68	8-1/4									
445T			16-1/2		8-9/16	24-24	27-57	3-3/8	8-3/8	4	22-68	8-1/4									
447T			20		8-9/16	24-24	27-57	3-3/8	8-3/8	4	23-86	8-1/4									
449T			25		8-9/16	24-24	27-57	3-3/8	8-1/2	4	23-86	8-1/4									
444TS			14-1/2		4-13/16	24-24	27-57	2-3/8	4-5/8	4	22-68	4-1/2									
445TS			16-1/2		4-13/16	24-24	27-57	2-3/8	4-5/8	4	22-68	4-1/2									
447TS			20		4-13/16	24-24	27-57	2-3/8	4-5/8	4	23-86	4-1/2									
449TS			25		4-13/16	24-24	27-57	2-3/8	4-3/4	4	23-86	4-1/2									
586T			22		13-3/8	38-1/4	29-3/8	3-7/8	11-5/8	3	23-3/4								M24x2.125		
587T			25		13-3/8	38-1/4	29-3/8	3-7/8	11-5/8	3	23-3/4									M24x2.125	
588T			28		13-3/8	38-1/4	29-3/8	3-7/8	11-5/8	4	23-3/4									M24x2.125	
586TZ	14-1/2	11-1/2	22	1-1/4	13-3/8	38-1/4	29-3/8	4-3/8	11-5/8	3	23-3/4				10					M24x2	
587TZ			25		13-3/8	38-1/4	29-3/8	4-3/8	11-5/8	3	23-3/4										M24x2
586TS			22		6-1/2	38-1/4	29-3/8	2-3/8	4-3/4	3	23-3/4									M20x1.7	
587TS			25		6-1/2	38-1/4	29-3/8	2-3/8	4-3/4	3	23-3/4										M20x1.7

U Frame TS Frame

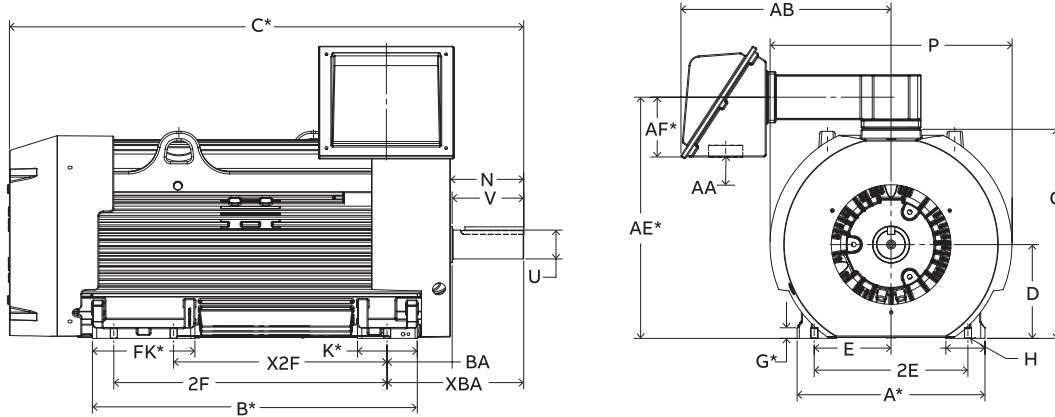
The above chart provides typical legacy Baldor-Reliance® motor dimensions. For more exact dimensional data, please check the specific drawing for each catalog number. NEMA states only a minimum value for AA dimension. AA dimensions shown in chart are legacy Baldor-Reliance typical values meeting or exceeding NEMA. Please check motor drawing for actual dimensions.

Frame L449T is not included in this chart. Please refer to the Large AC motor chart, or to the specific motor drawings for L449T dimensions.

NEMA C-Face	BA Dimensions
143-5TC	2-3/4
182-4TC	3-1/2
213-5TC	4-1/4
254-6TC	4-3/4

Frame	D	E	F	N	U	V	BA
66	4-1/8	2-15/16	2-1/2	2-1/4	3/4	2-1/4	3-1/8
203	5	4	2-3/4		2	3-1/8	
204			3-1/4	2-7/16	3/4		
224			3-3/8				
225	5-1/2	4-1/2	3-3/4	3-1/4	1	3	3-1/2
254	6-1/4	5	4-1/8	3-7/16	1-1/8	3-3/8	4-1/4
284	7	5-1/2	4-3/4	4-1/4	1-1/4	3-3/4	4-3/4
324	8	6-1/4	5-1/4	5-3/8	1-5/8	4-7/8	5-1/4
326			6				
364	9	7	5-5/8	5-5/8	1-7/8	5-3/8	5-7/8
365			6-1/8				
404	10	8	6-1/8	6-3/8	2-1/8	6-1/8	6-5/8
405			6-7/8				
444	11	9	7-1/4				

Large AC quick reference chart



Drawings represent standard large AC TEFC motors.

*Dimensions are for reference only.

*Contact your local sales office for "C" dimensions.

Dimensions - N, O, P and AB are specific to legacy Baldor-Reliance® motors.

Frame	D	E	Dual foot mount holes		H	N	O	P	U	V	AA	AB	BA	XBA
			2F	X2F										
L449TS														
L449T	11	9	32	25	13/16	4.84 8.56	24.49	28.32	2 3/8 3 3/8	4 3/4 8 3/8	4.60	26.86	7 1/2	-
5008S						6.44			2 3/8	6				15 1/2
5008L	12 1/2	10	25	22	15/16	10.44	27.25	32.46	4 1/8	10	-	30.28	-	19 1/2
5008L						10.44			4 1/2	10				19 1/2
5010S						6.44			2 3/8	6				15 1/2
5010L	12 1/2	10	32	28	15/16	10.44	27.25	32.46	4 1/8	10	-	30.28	-	19 1/2
5010L						10.44			4 1/2	10				19 1/2
5012L	12 1/2	10	40	36	15/16	10.44	27.25	32.46	4 1/8	10	-	30.28	-	19 1/2
5012L						10.44			4 1/2	10				19 1/2
5810S						7.84			2 3/8	6 1/2				17
5810L	14 1/2	11 1/2	36	32	1 7/8	14.53	32.31	36.86	4 1/8	13	-	32.05	-	23 11/16
5810L						14.53			4 1/2	13				23 11/16

The above chart provides typical legacy Baldor-Reliance motor dimensions.

For more exact dimensional data, please check the specific drawing for each catalog number.

AA dimension shown in chart are legacy Baldor-Reliance typical values.

Customer to drill hole in terminal box for frames larger than 449.

Dimensions are in inches.

If mounting clearance details are required, consult factory.