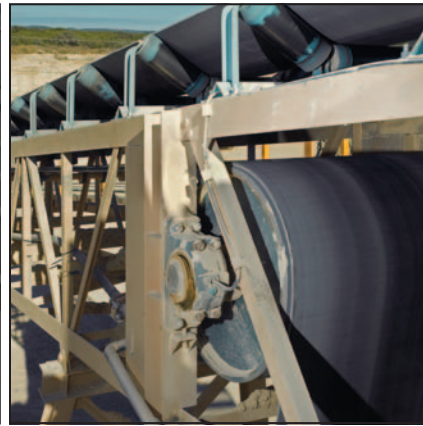


BALDOR®

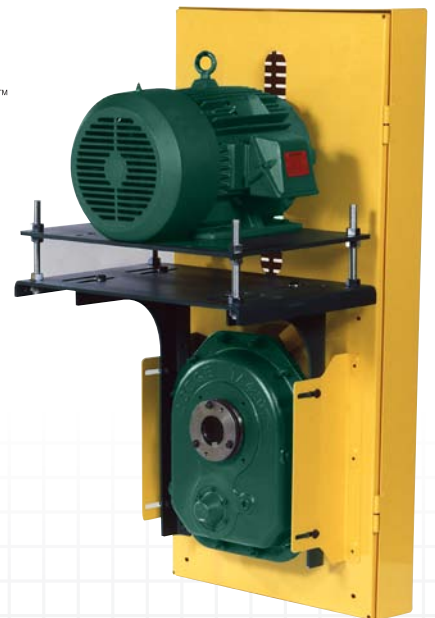
A MEMBER OF THE ABB GROUP



Pre-Engineered Torque-Arm II Drive Packages

SYSTEM-1™

BALDOR • DODGE®



Why Choose System-1?

- Optimized product selection
- Pre-assembled packages
- Project coordination
- Reduces the total cost of ownership

All Pre-Engineered Packages are provided with: Torque Arm II Heavy Duty Gearing AGMA Class II Selection



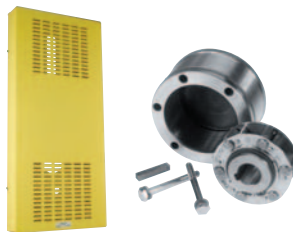
AGMA Case size Max Bore Bushings Provided



BALDOR Premium Eff Motor
1800RPM, 3PH, 230/460VAC NEMA
Design B Inverter Duty



DODGE Heavy Duty D-V Wedge Profile
Sheaves and Belts Min 2 Groove
selection



Expanded Metal Belt Guard Installed in
Mounting Position "B", M2

TA Rod Kit Included

Part Number Nomenclature

S1-TP-2-025-050-B

	Product	Class	HP	Output RPM	Optional
SYSTEM1	TAII	2	25	50	Backstop

- Units are assembled with belts loosely tensioned. Belts must be properly tensioned at final installation
- When provided, Backstops will be shipped loose inside belt guard. Must be installed at final installation
- Units are shipped without oil.
- Size 10 and 12 Reducers are shipped unassembled.
- Standard 2-3 week lead time
- PT Wizard Tool for Selecting Customized Packages – www.ptwizard.com

Phone: 864-284-5767

Email: pssystem1@baldor.com

Part Number Selection Tables



5 HP WITH BACKSTOP

RPM*	REDUCER	BORE	Part Number	List Price	WT
25	TA3203H32	2-3/16"	S1TP2005025B	\$6,707	448
30	TA3203H32	2-3/16"	S1TP2005030B	\$6,707	440
35	TA3203H32	2-3/16"	S1TP2005035B	\$6,707	438
40	TA2115H33	1-15/16"	S1TP2005040B	\$5,857	349
45	TA2115H33	1-15/16"	S1TP2005045B	\$5,857	356
50	TA2115H33	1-15/16"	S1TP2005050B	\$5,857	351
55	TA2115H25	1-15/16"	S1TP2005055B	\$5,857	351
60	TA2115H25	1-15/16"	S1TP2005060B	\$5,857	350
65	TA1107H25	1-7/16"	S1TP2005065B	\$5,026	282
70	TA1107H25	1-7/16"	S1TP2005070B	\$5,026	284
75	TA1107H15	1-7/16"	S1TP2005075B	\$5,026	286
80	TA1107H15	1-7/16"	S1TP2005080B	\$5,026	289
85	TA1107H15	1-7/16"	S1TP2005085B	\$5,026	286
90	TA1107H15	1-7/16"	S1TP2005090B	\$5,026	285
95	TA1107H15	1-7/16"	S1TP2005095B	\$5,026	285
100	TA1107H15	1-7/16"	S1TP2005100B	\$5,026	288

5 HP WITHOUT BACKSTOP

Part Number	List Price	WT
S1TP2005025	\$5,824	443
S1TP2005030	\$5,824	436
S1TP2005035	\$5,824	433
S1TP2005040	\$5,187	345
S1TP2005045	\$5,187	351
S1TP2005050	\$5,187	346
S1TP2005055	\$5,187	346
S1TP2005060	\$5,187	345
S1TP2005065	\$4,356	278
S1TP2005070	\$4,356	280
S1TP2005075	\$4,356	282
S1TP2005080	\$4,356	285
S1TP2005085	\$4,356	282
S1TP2005090	\$4,356	281
S1TP2005095	\$4,356	281
S1TP2005100	\$4,356	284

7.5 HP WITH BACKSTOP

RPM*	REDUCER	BORE	Part Number	List Price	WT
25	TA4207H40	2-7/16"	S1TP2007025B	\$8,151	596
30	TA4207H40	2-7/16"	S1TP2007030B	\$8,151	598
35	TA3203H32	2-3/16"	S1TP2007035B	\$6,869	499
40	TA3203H32	2-3/16"	S1TP2007040B	\$6,869	496
45	TA3203H32	2-3/16"	S1TP2007045B	\$6,869	497
50	TA3203H32	2-3/16"	S1TP2007050B	\$6,869	499
55	TA3203H32	2-3/16"	S1TP2007055B	\$6,869	497
60	TA2115H25	1-15/16"	S1TP2007060B	\$6,033	408
65	TA2115H26	1-15/16"	S1TP2007065B	\$6,033	412
70	TA2115H25	1-15/16"	S1TP2007070B	\$6,033	406
75	TA2115H15	1-15/16"	S1TP2007075B	\$6,033	403
80	TA2115H15	1-15/16"	S1TP2007080B	\$6,033	410
85	TA2115H15	1-15/16"	S1TP2007085B	\$6,033	407
90	TA2115H15	1-15/16"	S1TP2007090B	\$6,033	406
95	TA2115H15	1-15/16"	S1TP2007095B	\$6,033	405
100	TA2115H15	1-15/16"	S1TP2007100B	\$6,033	404

7.5 HP WITHOUT BACKSTOP

Part Number	List Price	WT
S1TP2007025	\$7,097	591
S1TP2007030	\$7,097	593
S1TP2007035	\$5,985	494
S1TP2007040	\$5,985	491
S1TP2007045	\$5,985	492
S1TP2007050	\$5,985	494
S1TP2007055	\$5,985	492
S1TP2007060	\$5,363	404
S1TP2007065	\$5,363	408
S1TP2007070	\$5,363	402
S1TP2007075	\$5,363	399
S1TP2007080	\$5,363	406
S1TP2007085	\$5,363	403
S1TP2007090	\$5,363	402
S1TP2007095	\$5,363	401
S1TP2007100	\$5,363	400

10 HP WITH BACKSTOP

RPM*	REDUCER	BORE	Part Number	List Price	WT
25	TA5215H40	2-15/16"	S1TP2010025B	\$10,374	867
30	TA4207H40	2-7/16"	S1TP2010030B	\$8,299	659
35	TA4207H40	2-7/16"	S1TP2010035B	\$8,299	653
40	TA4207H40	2-7/16"	S1TP2010040B	\$8,299	646
45	TA4207H40	2-7/16"	S1TP2010045B	\$8,299	650
50	TA3203H32	2-3/16"	S1TP2010050B	\$7,045	560
55	TA3203H25	2-3/16"	S1TP2010055B	\$7,045	556
60	TA3203H25	2-3/16"	S1TP2010060B	\$7,045	561
65	TA3203H25	2-3/16"	S1TP2010065B	\$7,045	560
70	TA3203H25	2-3/16"	S1TP2010070B	\$7,045	558
75	TA3203H15	2-3/16"	S1TP2010075B	\$7,045	563
80	TA3203H15	2-3/16"	S1TP2010080B	\$7,045	559
85	TA2115H15	1-15/16"	S1TP2010085B	\$6,223	480
90	TA2115H15	1-15/16"	S1TP2010090B	\$6,223	472
95	TA2115H15	1-15/16"	S1TP2010095B	\$6,223	468
100	TA2115H15	1-15/16"	S1TP2010100B	\$6,223	466

10 HP WITHOUT BACKSTOP

Part Number	List Price	WT
S1TP2010025	\$9,082	859
S1TP2010030	\$7,249	654
S1TP2010035	\$7,249	649
S1TP2010040	\$7,249	641
S1TP2010045	\$7,249	645
S1TP2010050	\$6,161	555
S1TP2010055	\$6,161	551
S1TP2010060	\$6,161	556
S1TP2010065	\$6,161	555
S1TP2010070	\$6,161	553
S1TP2010075	\$6,161	558
S1TP2010080	\$6,161	554
S1TP2010085	\$5,548	476
S1TP2010090	\$5,548	468
S1TP2010095	\$5,548	464
S1TP2010100	\$5,548	462

*Nominal RPM

Weight is approximate; Actual shipping weights may vary.

SY20 Discount Multiplier

15 HP WITH BACKSTOP

RPM*	REDUCER	BORE	Part Number	List Price	WT
25	TA6307H40	3-7/16"	S1TP2015025B	\$13,566	972
30	TA5215H40	2-15/16"	S1TP2015030B	\$10,897	879
35	TA5215H40	2-15/16"	S1TP2015035B	\$10,897	878
40	TA5215H40	2-15/16"	S1TP2015040B	\$10,897	870
45	TA5215H40	2-15/16"	S1TP2015045B	\$10,897	870
50	TA4207H40	2-7/16"	S1TP2015050B	\$8,493	678
55	TA4207H25	2-7/16"	S1TP2015055B	\$8,493	673
60	TA4207H25	2-7/16"	S1TP2015060B	\$8,493	680
65	TA4207H25	2-7/16"	S1TP2015065B	\$8,493	684
70	TA4207H25	2-7/16"	S1TP2015070B	\$8,493	672
75	TA4207H15	2-7/16"	S1TP2015075B	\$8,493	696
80	TA3203H15	2-3/16"	S1TP2015080B	\$7,391	589
85	TA3203H15	2-3/16"	S1TP2015085B	\$7,391	590
90	TA3203H15	2-3/16"	S1TP2015090B	\$7,391	588
95	TA3203H15	2-3/16"	S1TP2015095B	\$7,391	600
100	TA3203H15	2-3/16"	S1TP2015100B	\$7,391	593

15 HP WITHOUT BACKSTOP

Part Number	List Price	WT
S1TP2015025	\$11,985	960
S1TP2015030	\$9,605	869
S1TP2015035	\$9,605	870
S1TP2015040	\$9,605	862
S1TP2015045	\$9,605	862
S1TP2015050	\$7,581	673
S1TP2015055	\$7,581	668
S1TP2015060	\$7,581	675
S1TP2015065	\$7,581	679
S1TP2015070	\$7,581	667
S1TP2015075	\$7,581	691
S1TP2015080	\$6,508	5894
S1TP2015085	\$6,508	585
S1TP2015090	\$6,508	583
S1TP2015095	\$6,508	595
S1TP2015100	\$6,508	588

20 HP WITH BACKSTOP

RPM*	REDUCER	BORE	Part Number	List Price	WT
25	TA7315H40	3-15/16"	S1TP2020025B	\$18,407	1238
30	TA6307H40	3-7/16"	S1TP2020030B	\$13,989	1013
35	TA6307H41	3-7/16"	S1TP2020035B	\$13,989	1014
40	TA5215H40	2-15/16"	S1TP2020040B	\$11,215	921
45	TA5215H40	2-15/16"	S1TP2020045B	\$11,215	917
50	TA5215H40	2-15/16"	S1TP2020050B	\$11,215	912
55	TA5215H25	2-15/16"	S1TP2020055B	\$11,215	914
60	TA5215H25	2-15/16"	S1TP2020060B	\$11,215	915
65	TA5215H25	2-15/16"	S1TP2020065B	\$11,215	913
70	TA4207H25	2-7/16"	S1TP2020070B	\$8,883	724
75	TA4207H15	2-7/16"	S1TP2020075B	\$8,883	735
80	TA4207H15	2-7/16"	S1TP2020080B	\$8,883	721
85	TA4207H15	2-7/16"	S1TP2020085B	\$8,883	718
90	TA4207H15	2-7/16"	S1TP2020090B	\$8,883	719
95	TA4207H15	2-7/16"	S1TP2020095B	\$8,883	719
100	TA4207H15	2-7/16"	S1TP2020100B	\$8,883	718

20 HP WITHOUT BACKSTOP

Part Number	List Price	WT
S1TP2020025	\$16,369	1218
S1TP2020030	\$12,403	1001
S1TP2020035	\$12,403	1002
S1TP2020040	\$10,009	913
S1TP2020045	\$10,009	909
S1TP2020050	\$10,009	904
S1TP2020055	\$10,009	906
S1TP2020060	\$10,009	907
S1TP2020065	\$10,009	905
S1TP2020070	\$7,999	719
S1TP2020075	\$7,999	730
S1TP2020080	\$7,999	716
S1TP2020085	\$7,999	713
S1TP2020090	\$7,999	714
S1TP2020095	\$7,999	714
S1TP2020100	\$7,999	713

25 HP WITH BACKSTOP

RPM*	REDUCER	BORE	Part Number	List Price	WT
25	TA7315H40	3-15/16"	S1TP2025025B	\$19,086	1354
30	TA7315H40	3-15/16"	S1TP2025030B	\$19,086	1343
35	TA6307H40	3-7/16"	S1TP2025035B	\$14,640	1123
40	TA6307H40	3-7/16"	S1TP2025040B	\$14,640	1126
45	TA6307H40	3-7/16"	S1TP2025045B	\$14,640	1116
50	TA5215H40	2-15/16"	S1TP2025050B	\$11,909	1023
55	TA5215H25	2-15/16"	S1TP2025055B	\$11,909	1023
60	TA5215H25	2-15/16"	S1TP2025060B	\$11,909	1038
65	TA5215H25	2-15/16"	S1TP2025065B	\$11,909	1030
70	TA5215H25	2-15/16"	S1TP2025070B	\$11,909	1028
75	TA5215H15	2-15/16"	S1TP2025075B	\$11,909	1057
80	TA5215H15	2-15/16"	S1TP2025080B	\$11,909	1046
85	TA5215H15	2-15/16"	S1TP2025085B	\$11,909	1047
90	TA4207H15	2-7/16"	S1TP2025090B	\$9,548	830
95	TA4207H15	2-7/16"	S1TP2025095B	\$9,548	839
100	TA4207H15	2-7/16"	S1TP2025100B	\$9,548	841

25 HP WITHOUT BACKSTOP

Part Number	List Price	WT
S1TP2025025	\$17,043	1334
S1TP2025030	\$17,043	1323
S1TP2025035	\$13,053	1112
S1TP2025040	\$13,053	1114
S1TP2025045	\$13,053	1104
S1TP2025050	\$10,759	1015
S1TP2025055	\$10,759	1015
S1TP2025060	\$10,759	1030
S1TP2025065	\$10,759	1022
S1TP2025070	\$10,759	1020
S1TP2025075	\$10,759	1049
S1TP2025080	\$10,759	1038
S1TP2025085	\$10,759	1039
S1TP2025090	\$8,664	825
S1TP2025095	\$8,664	834
S1TP2025100	\$8,664	836

*Nominal RPM

Weight is approximate; Actual shipping weights may vary.

SY20 Discount Multiplier

Part Number Selection Tables



30 HP WITH BACKSTOP

RPM*	REDUCER	BORE	Part Number	List Price	WT
25	TA8407H40	4-7/16"	S1TP2030025B	\$25,793	1407
30	TA7315H40	3-15/16"	S1TP2030030B	\$19,585	1380
35	TA7315H40	3-15/16"	S1TP2030035B	\$19,585	1381
40	TA7315H40	3-15/16"	S1TP2030040B	\$19,585	1372
45	TA6307H40	3-7/16"	S1TP2030045B	\$15,215	1167
50	TA6307H40	3-7/16"	S1TP2030050B	\$15,215	1150
55	TA6307H25	3-7/16"	S1TP2030055B	\$15,215	1170
60	TA5215H25	2-15/16"	S1TP2030060B	\$12,455	1075
65	TA5215H25	2-15/16"	S1TP2030065B	\$12,455	1067
70	TA5215H25	2-15/16"	S1TP2030070B	\$12,455	1079
75	TA5215H15	2-15/16"	S1TP2030075B	\$12,455	1092
80	TA5215H15	2-15/16"	S1TP2030080B	\$12,455	1090
85	TA5215H15	2-15/16"	S1TP2030085B	\$12,455	1088
90	TA5215H15	2-15/16"	S1TP2030090B	\$12,455	1084
95	TA5215H15	2-15/16"	S1TP2030095B	\$12,455	1072
100	TA5215H15	2-15/16"	S1TP2030100B	\$12,455	1097

30 HP WITHOUT BACKSTOP

Part Number	List Price	WT
S1TP2030025	\$24,691	1391
S1TP2030030	\$17,542	1360
S1TP2030035	\$17,542	1361
S1TP2030040	\$17,542	1352
S1TP2030045	\$13,628	1155
S1TP2030050	\$13,628	1138
S1TP2030055	\$13,628	1158
S1TP2030060	\$11,324	1067
S1TP2030065	\$11,324	1059
S1TP2030070	\$11,324	1071
S1TP2030075	\$11,324	1084
S1TP2030080	\$11,324	1082
S1TP2030085	\$11,324	1080
S1TP2030090	\$11,324	1076
S1TP2030095	\$11,324	1064
S1TP2030100	\$11,324	1089

40 HP WITH BACKSTOP

RPM*	REDUCER	BORE	Part Number	List Price	WT
25	TA8407H40	4-7/16"	S1TP2040025B	\$26,809	1584
30	TA8407H40	4-7/16"	S1TP2040030B	\$26,809	1580
35	TA8407H40	4-7/16"	S1TP2040035B	\$26,809	1565
40	TA7315H40	3-15/16"	S1TP2040040B	\$20,691	1564
45	TA7315H40	3-15/16"	S1TP2040045B	\$20,691	1558
50	TA7315H40	3-15/16"	S1TP2040050B	\$20,691	1545
55	TA7315H25	3-15/16"	S1TP2040055B	\$20,691	1675
60	TA6307H25	3-7/16"	S1TP2040060B	\$16,264	1350
65	TA6307H25	3-7/16"	S1TP2040065B	\$16,264	1359
70	TA6307H25	3-7/16"	S1TP2040070B	\$16,264	1355
75	TA6307H15	3-7/16"	S1TP2040075B	\$16,264	1365
80	TA5215H15	2-15/16"	S1TP2040080B	\$13,562	1261
85	TA5215H15	2-15/16"	S1TP2040085B	\$13,562	1261
90	TA5215H15	2-15/16"	S1TP2040090B	\$13,562	1259
95	TA5215H15	2-15/16"	S1TP2040095B	\$13,562	1256
100	TA5215H15	2-15/16"	S1TP2040100B	\$13,562	1266

40 HP WITHOUT BACKSTOP

Part Number	List Price	WT
S1TP2040025	\$24,691	1568
S1TP2040030	\$24,691	1564
S1TP2040035	\$24,691	1549
S1TP2040040	\$18,649	1544
S1TP2040045	\$18,649	1538
S1TP2040050	\$18,649	1525
S1TP2040055	\$18,649	1656
S1TP2040060	\$14,725	1338
S1TP2040065	\$14,725	1347
S1TP2040070	\$14,725	1343
S1TP2040075	\$14,725	1353
S1TP2040080	\$12,436	1253
S1TP2040085	\$12,436	1253
S1TP2040090	\$12,436	1251
S1TP2040095	\$12,436	1248
S1TP2040100	\$12,436	1258

50 HP WITH BACKSTOP

RPM*	REDUCER	BORE	Part Number	List Price	WT
25	TA9415H40	4-15/16"	S1TP2050025B	\$34,790	2123
30	TA9415H40	4-15/16"	S1TP2050030B	\$34,790	2096
35	TA8407H40	4-7/16"	S1TP2050035B	\$25,956	1651
40	TA8407H40	4-7/16"	S1TP2050040B	\$25,956	1650
45	TA8407H40	4-7/16"	S1TP2050045B	\$25,956	1692
50	TA7315H40	3-15/16"	S1TP2050050B	\$20,052	1632
55	TA7315H25	3-15/16"	S1TP2050055B	\$20,052	1763
60	TA7315H25	3-15/16"	S1TP2050060B	\$20,052	1776
65	TA7315H25	3-15/16"	S1TP2050065B	\$20,052	1771
70	TA7315H25	3-15/16"	S1TP2050070B	\$20,052	1786
75	TA6307H15	3-7/16"	S1TP2050075B	\$15,786	1447
80	TA6307H15	3-7/16"	S1TP2050080B	\$15,786	1451
85	TA6307H15	3-7/16"	S1TP2050085B	\$15,786	1444
90	TA6307H15	3-7/16"	S1TP2050090B	\$15,786	1443
95	TA6307H15	3-7/16"	S1TP2050095B	\$15,786	1450
100	TA6307H15	3-7/16"	S1TP2050100B	\$15,786	1427

50 HP WITHOUT BACKSTOP

Part Number	List Price	WT
S1TP2050025	\$32,855	2103
S1TP2050030	\$32,855	2076
S1TP2050035	\$23,918	1635
S1TP2050040	\$23,918	1634
S1TP2050045	\$23,918	1676
S1TP2050050	\$18,122	1612
S1TP2050055	\$18,122	1743
S1TP2050060	\$18,122	1756
S1TP2050065	\$18,122	1751
S1TP2050070	\$18,122	1766
S1TP2050075	\$14,463	1435
S1TP2050080	\$14,463	1439
S1TP2050085	\$14,463	1432
S1TP2050090	\$14,463	1431
S1TP2050095	\$14,463	1438
S1TP2050100	\$14,463	1415

*Nominal RPM

Weight is approximate; Actual shipping weights may vary.

SY20 Discount Multiplier

60 HP WITH BACKSTOP

RPM*	REDUCER	BORE	Part Number	List Price	WT
25	TA10507H40	5-7/16"	S1TP2060025B	\$53,613	2765
30	TA9415H40	4-15/16"	S1TP2060030B	\$37,220	2320
35	TA9415H40	4-15/16"	S1TP2060035B	\$37,220	2317
40	TA8407H40	4-7/16"	S1TP2060040B	\$28,089	1877
45	TA8407H40	4-7/16"	S1TP2060045B	\$28,089	1906
50	TA8407H40	4-7/16"	S1TP2060050B	\$28,089	1873
55	TA8407H25	4-7/16"	S1TP2060055B	\$28,089	1876
60	TA7315H25	3-15/16"	S1TP2060060B	\$22,095	1977
65	TA7315H25	3-15/16"	S1TP2060065B	\$22,095	1979
70	TA7315H25	3-15/16"	S1TP2060070B	\$22,095	2001
75	TA7315H15	3-15/16"	S1TP2060075B	\$22,095	1870
80	TA7315H15	3-15/16"	S1TP2060080B	\$22,095	1867
85	TA7315H15	3-15/16"	S1TP2060085B	\$22,095	1868
90	TA6307H15	3-7/16"	S1TP2060090B	\$17,753	1651
95	TA6307H15	3-7/16"	S1TP2060095B	\$17,753	1666
100	TA6307H15	3-7/16"	S1TP2060100B	\$17,753	1633

60 HP WITHOUT BACKSTOP

Part Number	List Price	WT
S1TP2060025	\$50,994	2741
S1TP2060030	\$35,289	2300
S1TP2060035	\$35,289	2297
S1TP2060040	\$26,069	1861
S1TP2060045	\$26,069	1890
S1TP2060050	\$26,069	1857
S1TP2060055	\$26,069	1860
S1TP2060060	\$20,160	1958
S1TP2060065	\$20,160	1980
S1TP2060070	\$20,160	1992
S1TP2060075	\$20,160	1851
S1TP2060080	\$20,160	1848
S1TP2060085	\$20,160	1849
S1TP2060090	\$16,430	1639
S1TP2060095	\$16,430	1654
S1TP2060100	\$16,430	1621

75 HP WITH BACKSTOP

RPM*	REDUCER	BORE	Part Number	List Price	WT
25	TA10507H40	5-7/16"	S1TP2075025B	\$54,806	2836
30	TA10507H40	5-7/16"	S1TP2075030B	\$54,806	2808
35	TA9415H40	4-15/16"	S1TP2075035B	\$38,372	2380
40	TA9415H40	4-15/16"	S1TP2075040B	\$38,372	2377
45	TA9415H40	4-15/16"	S1TP2075045B	\$38,372	2373
50	TA8407H40	4-7/16"	S1TP2075050B	\$29,336	1929
55	TA8407H25	4-7/16"	S1TP2075055B	\$29,336	1951
60	TA8407H25	4-7/16"	S1TP2075060B	\$29,336	1946
65	TA8407H25	4-7/16"	S1TP2075065B	\$29,336	1935
70	TA8407H25	4-7/16"	S1TP2075070B	\$29,336	1926
75	TA7315H15	3-15/16"	S1TP2075075B	\$23,652	1951
80	TA7315H15	3-15/16"	S1TP2075080B	\$23,652	1923
85	TA7315H15	3-15/16"	S1TP2075085B	\$23,652	1922
90	TA7315H15	3-15/16"	S1TP2075090B	\$23,652	1920
95	TA7315H15	3-15/16"	S1TP2075095B	\$23,652	1926
100	TA7315H15	3-15/16"	S1TP2075100B	\$23,652	1923

75 HP WITHOUT BACKSTOP

Part Number	List Price	WT
S1TP2075025	\$52,187	2812
S1TP2075030	\$52,187	2784
S1TP2075035	\$36,437	2360
S1TP2075040	\$36,437	2357
S1TP2075045	\$36,437	2353
S1TP2075050	\$27,360	1913
S1TP2075055	\$27,360	1935
S1TP2075060	\$27,360	1930
S1TP2075065	\$27,360	1919
S1TP2075070	\$27,360	1910
S1TP2075075	\$21,717	1932
S1TP2075080	\$21,717	1904
S1TP2075085	\$21,717	1903
S1TP2075090	\$21,717	1901
S1TP2075095	\$21,717	1907
S1TP2075100	\$21,717	1904

100 HP WITH BACKSTOP

RPM*	REDUCER	BORE	Part Number	List Price	WT
25	TA12608H40	6-1/2"	S1TP2100025B	\$78,404	3774
30	TA12608H40	6-1/2"	S1TP2100030B	\$78,404	3765
35	TA10507H40	5-7/16"	S1TP2100035B	\$57,155	3117
40	TA10507H40	5-7/16"	S1TP2100040B	\$57,155	3127
45	TA10507H40	5-7/16"	S1TP2100045B	\$57,155	3135
50	TA9415H40	4-15/16"	S1TP2100050B	\$40,514	2685
55	TA9415H25	4-15/16"	S1TP2100055B	\$40,514	2656
60	TA9415H25	4-15/16"	S1TP2100060B	\$40,514	2631
65	TA9415H25	4-15/16"	S1TP2100065B	\$40,514	2637
70	TA8407H25	4-7/16"	S1TP2100070B	\$31,397	2250
75	TA8407H15	4-7/16"	S1TP2100075B	\$31,397	2289
80	TA8407H15	4-7/16"	S1TP2100080B	\$31,397	2269
85	TA8407H15	4-7/16"	S1TP2100085B	\$31,397	2282
90	TA8407H15	4-7/16"	S1TP2100090B	\$31,397	2242
95	TA8407H15	4-7/16"	S1TP2100095B	\$31,397	2246
100	TA8407H15	4-7/16"	S1TP2100100B	\$31,397	2261

100 HP WITHOUT BACKSTOP

Part Number	List Price	WT
S1TP2100025	\$74,075	3733
S1TP2100030	\$74,075	3724
S1TP2100035	\$54,536	3093
S1TP2100040	\$54,536	3103
S1TP2100045	\$54,536	3111
S1TP2100050	\$38,421	2665
S1TP2100055	\$38,421	2636
S1TP2100060	\$38,421	2611
S1TP2100065	\$38,421	2617
S1TP2100070	\$29,435	2236
S1TP2100075	\$29,435	2275
S1TP2100080	\$29,435	2255
S1TP2100085	\$29,435	2268
S1TP2100090	\$29,435	2228
S1TP2100095	\$29,435	2232
S1TP2100100	\$29,435	2247

*Nominal RPM

Weight is approximate; Actual shipping weights may vary.

SY20 Discount Multiplier

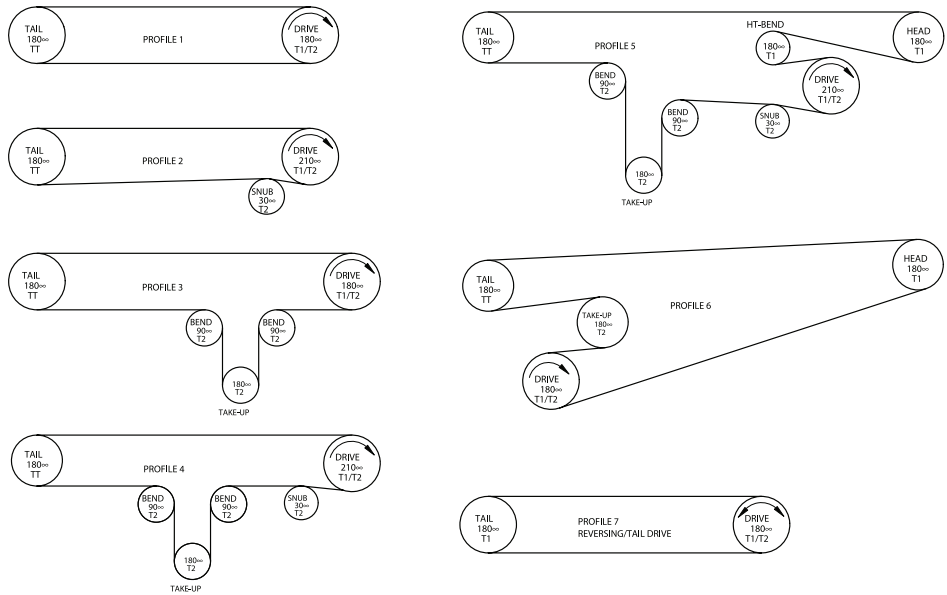
Customized Bulk Conveyor Solutions

Use this Quick Fax form to receive your customized solution quotation

To: SYSTEM-1 GROUP FROM: _____
 Fax: 864.281.2355 COMPANY: _____
 Re: CUSTOMIZED QUOTATION PHONE NUMBER: _____
 Email: pssystem1@baldor.com EMAIL : _____

Desired System Capacity (TPH) _____ Length of Conveyor _____
 Material Type _____ Change in Elevation _____
 Estimated Weight of Material _____ Number of Belt Scrappers/Plows _____
 Desired Belt Width _____ Idler Angle _____
 Desired Belt Speed _____ Bearing Center Distance _____

Desired Conveyor Profile (Please Circle Your Selection)



Additional Comments

Motor Type:

- Crusher Duty
- Severe Duty
- Quarry Duty
- Super-E Premium Eff.™
- 841™
- Other

Reducer Type:

- QUANTIS™
- TORQUE-ARM™ (TXT)
- TORQUE-ARM II™ (TA II)
- MAXUM™
- Motorized Torque Arm
- MagnaGear

Bearing Type:

- SCM Ball Bearing
- Type E
- S-2000
- IMPERIAL™ IP
- TAF
- IMPERIAL™ ISAF
- USAF™
- Hydraulic ISAF

Conveyor Pulley Type:

- Cema Drum
- Mine Duty Drum
- Mine Duty Extra Drum
- 3/8" Herringbone Lagging
- 3/8" Diamond Lagging
- 3/8" Holz Lagging
- Cema Wing
- Mine Duty Wing
- Mine Duty Extra Wing
- Wing Lagging

For a customized conveyor components solution contact the System-1 group at 864.284.5767 or visit us online at www.baldor.com or www.dodge-pt.com. One of our qualified product specialists will provide you with a quotation to meet your needs.

One System. One Source. One Solution.

SYSTEM¹



BALDOR • DODGE

Baldor's System-1 Group specializes in providing one source solutions of industrial power transmission and electric motor applications. When you work with our System-1 Group, you get the expertise you need to select and deliver the design, quotation and order processing of multiple power transmission, electrical products and services in one complete packaged solution.

System-1 is your one point of contact for customized power-matched and pre-assembled products. Call 864-284-5767 or email us at pssystem1@baldor.com for more information. One Source. One Solution. That's Baldor's System-1. baldor.com dodge-pt.com

- Enhanced Product Selection
- Pre-assembled Systems
- Single Point Contact
- Unmatched Quality and Service

BALDOR
A MEMBER OF THE ABB GROUP

P.O. Box 2400, Fort Smith, AR 72902-2400 U.S.A., Ph: (1) 479.646.4711, Fax (1) 479.648.5792, International Fax (1) 479.648.5895

Baldor - Dodge
6040 Ponders Court, Greenville, SC 29615-4617 U.S.A., Ph: (1) 864.297.4800, Fax: (1) 864.281.2433
www.baldor.com