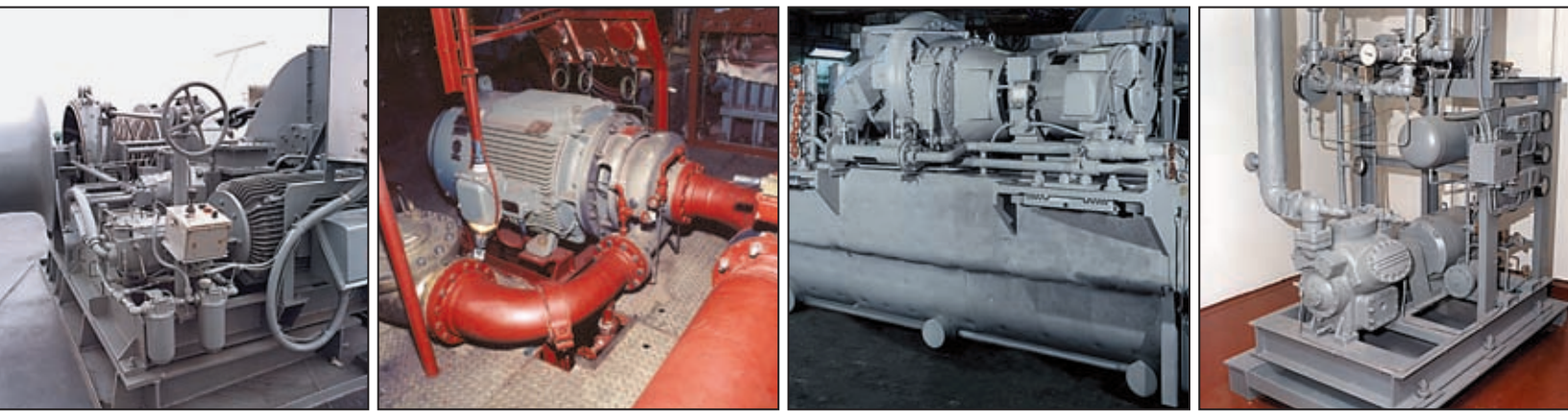


BALDOR • RELIANCE



**Reliance Duty Master[®]
AC Navy Motors • 1/5-500 HP**



BALDOR
BALDOR • DODGE • RELIANCE

Reliance Duty Master® AC Navy Motors



Standing Watch, Day and Night, Above Deck And Below.

When captain and crew ship out to sea, their trust in their vessel is absolute. The safe, reliable performance of Navy motors and generators is critical to the success of every mission. In fact, our motors have played a significant role in some of the most challenging U.S. Navy exploits in recent history. The Reliance commitment to consistent, predictable quality shows in everything we do.

Our Duty Master® AC Navy motors are manufactured under ISO-9001 certification to meet the stringent requirements of MIL-I-45208A. At Baldor, we understand that your extraordinary performance depends, in part, on the dependability of ours. We are proud to accept that challenge.

Above: The AEGIS guided missile destroyer, DDG-55 USS Stout, uses approximately 140 specially designed Reliance Navy low-noise motors, with NAVSEA certified sealed insulation, to drive or power a wide array of pumps, fans, compressors, and other equipment.

Reliance Duty Master® AC Navy Motors

Features:

- Designed for optimized performance and longer life in critical above deck and below deck applications.
- Compliance with the highest performance standards:
 - MIL-I-45208 Inspection
 - MIL-M-17059 Fractional HP AC Motors
 - MIL-M-17060 Integral HP AC Motors
 - MIL-P-17840 Pumps
 - MIL-F-18953 Fans
- Customized testing, inspection, & software
- Navy-approved Sealed Insulation System per MIL-STD-2037
- A variety of mounting configurations, speeds, and enclosures available to meet specific shipboard requirements.

We've been providing motor solutions to the U.S. Navy for over half a century and are dedicated to developing highly dependable products that perform reliably over the life of the ship.

We also offer Marine Duty motors, which are specially modified industrial type motors for both Above Deck and Offshore (wet environments) and Below Deck (dry environments) capable of meeting the following standards and specifications:

- IEEE 45
- USCG (United States Coast Guard)
- ABS (American Bureau of Ships)
- NEMA MG 1



Custom Motor Capabilities

Navy Service A Motors

Reliance Navy Service A motors meet all pertinent MIL specs for fractional and integral AC motors, including critical specifications pertaining to energy efficiency, sealed insulation, reduced weight, low airborne noise, and low structure-borne noise.

In accordance with the rigid requirements of MIL-M-17060 or MIL-M-17059, these motors are built with steel or ductile iron frames and mounting brackets (or non-magnetic components, where required) capable of resisting the shock loads encountered under enemy attack. MIL-S-901 certification is individually obtained for every Navy Service A motor design. These motors also use insulation systems, corrosion-proof hardware, and corrosion-resistant finishes that meet Navy combat-duty requirements.

Navy Service C Motors

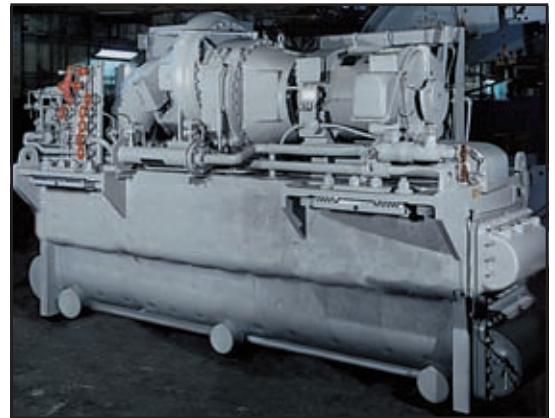
For applications non-essential to the combat-effectiveness of the ship, we offer Navy Service C motors using either cast iron or ductile iron construction.

Marine Duty Motors

Baldor•Reliance Marine Duty motors include stainless steel Marine nameplates, an insulation system and conduit box suitable for Marine Service, corrosion-proof hardware, and screens on Drip proof enclosures. Optional features include IP55 (Spraytight) & IP56 (Watertight) enclosure enhancements on enclosed motors, "Weatherdeck" finish, ductile iron components for enclosed motors, ABS Test & Inspection, and special software.



The pumps of this fresh water circulation system are powered by our 50-HP, 1800-RPM vertical P-base motors.



This air conditioning compressor is driven by a 250-HP, 3600-RPM DP Reliance motor.

Custom Motor Capabilities

Above Deck		Below Deck	
Winches & Cranes	Anchor Windlass Cargo Winches Constant-tension Winches Lifeboat Winches Mooring Winches Topping Winches Highlines Jib Cranes	Compressors	Air Compressors A/C Compressors Refrigeration
	Drives	Capstans Conveyors Weapon Systems	Pumps
			Fans & Air Handling



Unlimited Capabilities

All Reliance AC Navy motors use original, computer-aided designs and quality-controlled manufacturing methods to meet stringent U.S. Navy MIL specifications.

Reliance Navy Motors are built in standard NEMA and above-NEMA frame sizes and are rated from 1/5 to 500 HP.

Baldor•Reliance Marine Motors are rated from 1/4 to 3000 HP and are also available in standard NEMA and above-NEMA frame sizes.

A variety of mounting configurations, speeds, and enclosures are available to meet specific shipboard requirements.



TEAO multispeed vane-axial fan motor with non-rubbing labyrinth shaft seal per MIL-F-18953.



7.5-HP, 3600-RPM TEFC close-coupled pump motor designed for low structure-borne vibration, with a threaded Monel® shaft per MIL-P-17840.

Horsepower and Speed Capabilities								
HP	3600 RPM		1800 RPM		1200RPM		900 RPM	
	DPP	TEFC	DPP	TEFC	DPP	TEFC	DPP	TEFC
0.20	48*	48	48*	48	48*	48	56*	56
0.25	48*	48	48*	48	56*	56		
0.33	48*	48	48*	48	56*	56		
0.50	56*	56	56*	56	56*	56		
0.75	56*	56	56*	56	56*	56		
1	56/182TN*	56/182TN	56/182TN*	56/182TN	56/182TN*	56/182TN	182TN*	184TN
1 1/2	56/182TN*	56/182TN	56/182TN*	56/182TN	182TN*	184TN	184TN*	213TN
2	56/182TN*	56/182TN	56/182TN*	56/182TN	184TN*	213TN	213TN	215TN
3	182TN*	184TN	182TN	184TN	213TN	215TN	215TN	254TN
5	182TN*	213TN	184TN	213TN	215TN	254TN	254TN	256TN
7 1/2	184TN*	215TN	213TN	215TN	254TN	256TN	256TN	256TN
10	213TN	254TN	215TN	254TN	256TN	256TN	286TN	286TN
15	215TN	256TN	254TN	256TN	286TN	286TN	286TN	326TN
20	254TN	286TN	256TN	286TN	286TN	326TN	326TN	326TN
25	256TN	286TN	286TN	286TN	326TN	326TN	326TN	365TN
30	286TN	326TN	286TN	326TN	326TN	365TN	365TN	365TN
40	286TN	326TN	326TN	326TN	365TN	365TN	365TN	405TN
50	326TN	365TN	326TN	365TN	365TN	405TN	405TN	405TN
60	326TN	365TN	365TN	365TN	405TN	405TN	405TN	445TN
75	365TN	405TN	365TN	405TN	405TN	445TN	445TN	445TN
100	365TN	445TN	405TN	445TN	445TN	445TN	445TN	
125	405TN	445TN	405TN	445TN	445TN	445TN		
150	445TN	445TN	445TN	445TN	449TN			
200	445TN		445TN		5000			
250	445TN		449TN		5000			
300	449TN		449TN		5000			
350	449TN		449TN		5000			
400	449TN		5000		5000			
500	5000		5000		5000			

NOTES: DPP - Drip-proof Protected, TEFC - Totally Enclosed Fan Cooled, Spraytight Fan Cooled, Watertight Fan Cooled and Explosion Proof Fan Cooled have same frame assignments as Totally Enclosed Fan Cooled, Short Shaft extensions (TNS) may be furnished for coupled service, Frame size may be increased by one(1) frame size for two-pole motors where a non-magnetic one-piece shaft is required. *TENV Enclosure



500-HP, 1800-RPM DP (drip proof) low airborne-noise pump motor for use on cargo oil and JP-5 fuel pumps.

Seaworthy Performance

Enclosures:

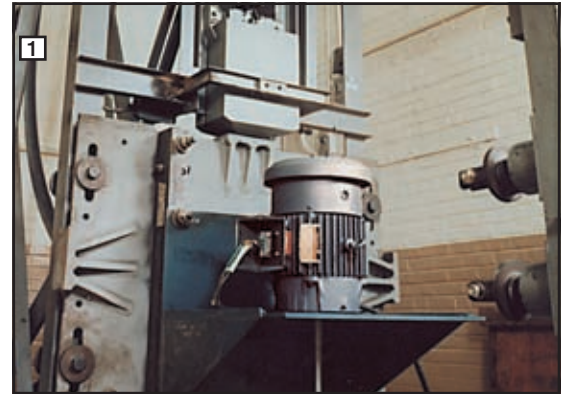
- Drip-proof Protected (DPP)
- Totally-enclosed air over (TEAO)
- Totally-enclosed non-ventilated (TENV)
- Totally-enclosed fan-cooled (TEFC)
- Spraytight (ST)
- Watertight (WT)
- Explosion-proof (XP)
- Submersible

Mounting Configurations:

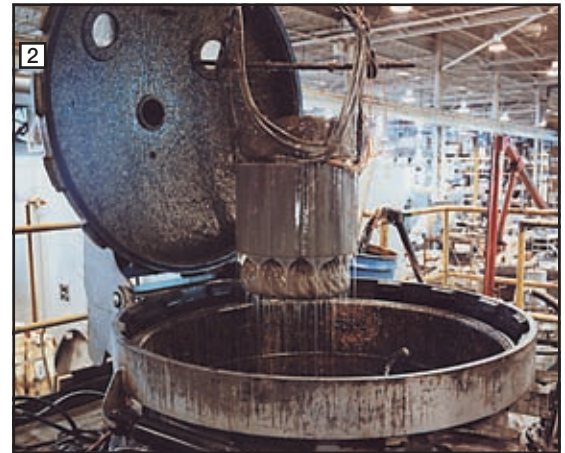
- Horizontal
- Vertical
- Rigid foot mount
- Footless
- C-face
- D-flange
- P-base
- Special flanges and shafts

Development & Testing:

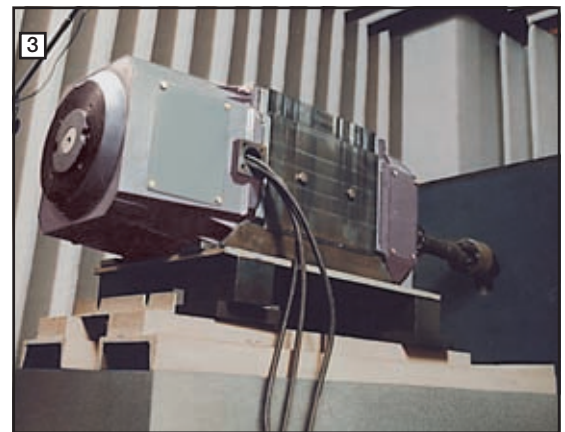
Our research and development capabilities are directed at developing new materials, manufacturing processes, and product innovations to extend motor longevity in Navy applications. Every Reliance Navy motor proves its performance in critical laboratory testing before facing the ultimate test of Navy service. Navy first article motors are dynamometer-tested to verify conformation with specific performance criteria. In addition, testing for shock-load resistance, the ability to resist shipboard and outside vibrations and noise levels are standard for our full line of Navy duty motors.



Navy motors must withstand military-approved shock testing, as performed by this hammer and anvil machine, which releases a free-falling weight that impacts on the motor mounting structure. Every Reliance Navy Service A motor is proven through testing to be capable of maintaining operation during, and immediately after, experiencing such severe shock loads.



To withstand humid marine environments, Reliance Navy motors use standard U.S. Navy insulation systems meeting MIL-I-24092 specifications. For critical applications, a sealed insulation system is also available, which meets MIL-M-17060E requirements including 200 hours of submerged qualification testing and a 24-hour underwater stator winding production test.



This Reliance sound test chamber represents a major investment in advanced technology. Since 1961, this virtually noiseless room-within-a-room has been used to test the airborne noise levels of our Navy motors.

**Contact your nearest Baldor District Office at these
World Wide locations, or visit www.baldor.com**

UNITED STATES

ARIZONA

PHOENIX
4211 S 43RD PLACE
PHOENIX, AZ 85040
PHONE: 602-470-0407
FAX: 602-470-0464

CALIFORNIA

LOS ANGELES
6480 FLOTILLA
COMMERCE, CA 90040
PHONE: 323-724-6771
FAX: 323-721-5859

HAYWARD

21056 FORBES STREET
HAYWARD, CA 94545
PHONE: 510-785-9900
FAX: 510-785-9910

COLORADO

DENVER
2520 W BARBERRY PLACE
DENVER, CO 80204
PHONE: 303-623-0127
FAX: 303-595-3772

CONNECTICUT

WALLINGFORD
65 SOUTH TURNPIKE ROAD
WALLINGFORD, CT 06492
PHONE: 203-269-1354
FAX: 203-269-5485

FLORIDA

**TAMPA/PUERTO RICO/
VIRGIN ISLANDS**
3906 EAST 11TH AVENUE
TAMPA, FL 33605
PHONE: 813-248-5078
FAX: 813-247-2984

GEORGIA

ATLANTA
62 TECHNOLOGY DR.
ALPHARETTA, GA 30005
PHONE: 770-772-7000
FAX: 770-772-7200

ILLINOIS

CHICAGO
1601 FRONTENAC ROAD
NAPERVILLE, IL 60563
PHONE: 630-848-5100
FAX: 630-848-5110

INDIANA

INDIANAPOLIS
5525 W. MINNESOTA STREET
INDIANAPOLIS, IN 46241
PHONE: 317-246-5100
FAX: 317-246-5110
800-428-4141

IOWA

DES MOINES
1800 DIXON STREET, SUITE C
DES MOINES, IA 50316
PHONE: 515-263-6929
FAX: 515-263-6515

MARYLAND

BALTIMORE
6660 SANTA BARBARA RD.
SUITE 22-24
ELKBRIDGE, MD 21075
PHONE: 410-579-2135
FAX: 410-579-2677

MASSACHUSETTS

BOSTON
6 PULLMAN STREET
WORCESTER, MA 01606
PHONE: 508-854-0708
FAX: 508-854-0291

MICHIGAN

DETROIT
33782 STERLING PONDS
BLVD.
STERLING HEIGHTS,
MI 48312
PHONE: 586-978-9800
FAX: 586-978-9969

GRAND RAPIDS

668 3 MILE ROAD NW
GRAND RAPIDS, MI 49504
PHONE: 616-785-1784
FAX: 616-785-1788

MINNESOTA

MINNEAPOLIS
21080 134TH AVE. NORTH
ROGERS, MN 55374
PHONE: 763-428-3633
FAX: 763-428-4551

MISSOURI

ST LOUIS
422 INDUSTRIAL DRIVE
MARYLAND HEIGHTS,
MO 63043
PHONE: 314-298-1800
FAX: 314-298-7660

KANSAS CITY

915 N W PLATTE VALLEY DR
RIVERSIDE, MO 64150
PHONE: 816-587-0272
FAX: 816-587-3735

NEW YORK

AUBURN
ONE ELLIS DRIVE
AUBURN, NY 13021
PHONE: 315-255-3403
FAX: 315-253-9923

NORTH CAROLINA

GREENSBORO
1220 ROTHERWOOD ROAD
GREENSBORO, NC 27406
P O BOX 16500
GREENSBORO, NC 27416
PHONE: 336-272-6104
FAX: 336-273-6628

OHIO

CINCINNATI
2929 CRESCENTVILLE ROAD
WEST CHESTER, OH 45069
PHONE: 513-771-2600
FAX: 513-772-2219

CLEVELAND

8929 FREEWAY DRIVE
MACEDONIA, OH 44056
PHONE: 330-468-4777
FAX: 330-468-4778

OKLAHOMA

TULSA
2 EAST DAWES
BIXBY, OK 74008
PHONE: 918-366-9320
FAX: 918-366-9338

OREGON

PORTLAND
20393 SW AVERY COURT
TUALATIN, OR 97062
PHONE: 503-691-9010
FAX: 503-691-9012

PENNSYLVANIA

PHILADELPHIA
1035 THOMAS BUSCH
MEMORIAL HIGHWAY
PENNSAUKEN, NJ 08110
PHONE: 856-661-1442
FAX: 856-663-6363

PITTSBURGH

616H BEATTY ROAD
MONROEVILLE, PA 15146
PHONE: 412-380-7244
FAX: 412-380-7250

TENNESSEE

MEMPHIS
4000 WINCHESTER ROAD
MEMPHIS, TN 38118
PHONE: 901-365-2020
FAX: 901-365-3914

TEXAS

HOUSTON
4647 PINE TIMBERS
SUITE # 135
HOUSTON, TX 77041
PHONE: 713-895-7062
FAX: 713-690-4540

DALLAS

3040 QUEBEC
DALLAS, TX 75247
PHONE: 214-634-7271
FAX: 214-634-8874

UTAH

SALT LAKE CITY
2230 SOUTH MAIN STREET
SALT LAKE CITY, UT 84115
PHONE: 801-832-0127
FAX: 801-832-8911

WISCONSIN

MILWAUKEE
2725 SOUTH 163RD STREET
NEW BERLIN, WI 53151
PHONE: 262-784-5940
FAX: 262-784-1215

INTERNATIONAL SALES

FORT SMITH, AR
P.O. BOX 2400
FORT SMITH, AR 72902
PHONE: 479-646-4711
FAX: 479-648-5895

CANADA

EDMONTON, ALBERTA
4053-92 STREET
EDMONTON, ALBERTA
T6E 6R8
PHONE: 780-434-4900
FAX: 780-438-2600

OAKVILLE, ONTARIO

2750 COVENTRY ROAD
OAKVILLE, ONTARIO L6H 6R1
PHONE: 905-829-3301
FAX: 905-829-3302

MONTREAL, QUEBEC

1844 WILLIAM STREET
MONTREAL, QUEBEC
H3J 1R5
PHONE: 514-933-2711
FAX: 514-933-8639

**VANCOUVER,
BRITISH COLUMBIA**

1538 KEBET WAY
PORT COQUITLAM, BC
V3C 5M5
PHONE 604-421-2822
FAX: 604-421-3113

WINNIPEG, MANITOBA

54 PRINCESS STREET
WINNIPEG, MANITOBA
R3B 1K2
PHONE: 204-942-5205
FAX: 204-956-4251

AUSTRALIA

UNIT 3, 6 STANTON ROAD
SEVEN HILLS, NSW 2147,
AUSTRALIA
PHONE: (61) (2) 9674 5455
FAX: (61) (2) 9674 2495

UNIT 8, 5 KELLETTS ROAD
ROWVILLE, VICTORIA, 3178
AUSTRALIA
PHONE: (61) (3) 9753 4355
FAX: (61) (3) 9753 4366

BALDOR CENTROAMERICA

RESIDENCIAL PINARES
DE SUIZA
POL. 15 #44, NVA.
SAN SALVADOR
EL SALVADOR,
CENTRO AMERICA
PHONE: (503) 288-1519
FAX: (503) 288-1518

BALDOR SUDAMERICA

CALLE F, EL CANGREJO
CONDOMINIO P.H.
CONDADO
PLAZA
APT. 11D, BELLA VISTA
PANAMA CITY, REP.
DE PANAMA
PHONE: (507) 265-6041

CHINA

SHANGHAI JIAHUA
BUSINESS CENTER
ROOM NO. A-8421
808 HONG QIAO ROAD
SHANGHAI 200030
PHONE: 86-21-64473060
FAX: 86-21-64078620

GERMANY

DIESELSTRASSE 22
D-85551 KIRCHHEIM
MUNICH, GERMANY
PHONE: (49) (89) 90508 - 0
FAX: (49) (89) 90508 - 492

INDIA

14, COMMERCE AVENUE
MAHAGANESH COLONY
PAUD ROAD
PUNE - 411 038
MAHARASHTRA, INDIA
PHONE: 91 20 25 45 95 31/32
FAX: 91 20 24 55 95 30

ITALY

BALDOR ASR AG
SUCCURSALE DI MENDRISIO
VIA BORROMINI, 20A
CH-6850 MENDRISIO
SWITZERLAND
PHONE: 41 91 640 9952
FAX: 41 91 630 2633

JAPAN

DIA BLDG 802,
2-21-1 TSURUYA-CHO,
KANAGAWA-KU
YOKOHAMA, 221-0835,
JAPAN
PHONE: 81-45-412-4506
FAX: 81-45-412-4507

KOREA

ROOM 210
BUPYEONG INDUSTRIAL
COMMERCIAL COOPERATIVE
396-16 CHEONGCHEON
2-DONG,
BUPYEONG-GU
INCHEON, KOREA, 403-858
PHONE: 82 32 508 3252
FAX: 82 32 508 3253

MÉXICO

KM. 2.0 BLVD. AL
AEROPUERTO
LEÓN 37545, GUANAJUATO,
MÉXICO
PHONE: 52 477 761 2030
FAX: 52 477 761 2010

MIDDLE EAST & NORTH

AFRICA
VSE INTERNATIONAL CORP.
3233 NORTH ARLINGTON
HEIGHTS
SUITE 100W
ARLINGTON HEIGHTS,
IL 60004
PHONE: 847 590 5547

SINGAPORE

51 KAKI BUKIT ROAD 2
K B WAREHOUSE COMPLEX
SINGAPORE 417863
PHONE: (65) 6 744 2572
FAX: (65) 6 747 1708

SWITZERLAND

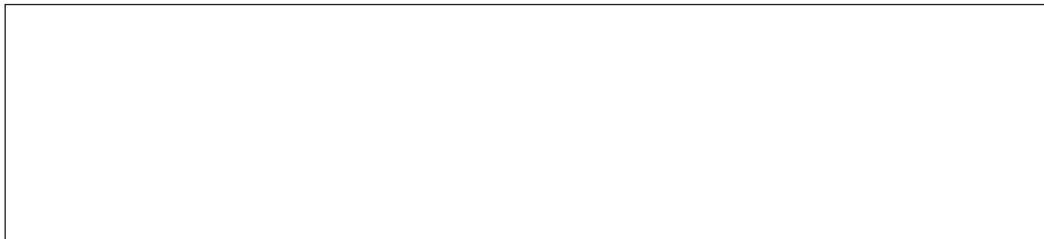
POSTFACH 73
SCHUTZENSTRASSE 59
CH-8245 FEUERTHALEN
SWITZERLAND
PHONE: (41) (52) 6474700
FAX: (41) (52) 6592394

TAIWAN

4F, NO. 25, SEC. 1
TUN-HUA S ROAD
TAIPEI 10657, TAIWAN, R.O.C.
PHONE: (886-2) 2577-4352
FAX: (886-2) 2577-4157

UNITED KINGDOM

6 BRISTOL DISTRIBUTION
PARK
HAWKLEY DRIVE
BRISTOL BS32 0BF U.K.
PHONE: 44 1454 850000
FAX: 44 1454 859001



Baldor Electric Company
P.O. Box 2400
Fort Smith, AR 72902-2400 U.S.A.
Ph (479) 646-4711 • Fax (479) 648-5792
International Fax (479) 648-5895
www.baldor.com

