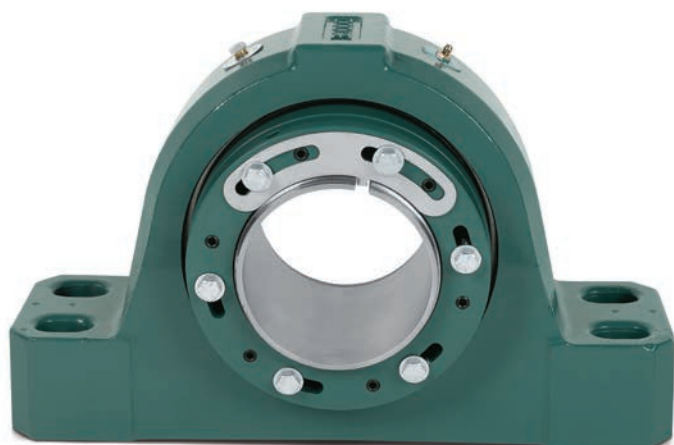


DODGE

Safety Mount spherical roller bearings

Safer. Faster. Easier.



The Dodge Safety Mount spherical roller bearing uses a patented built-in mounting system to reduce installation time up to 75% compared to traditional products found in industrial applications. The innovative mounting design uses fasteners to replace the blows of a hammer, creating a safer, faster, easier, and more accurate installation.



Safety Mount advantage

The Dodge Safety Mount spherical roller bearing from ABB combines the advantages you rely on in today's Dodge Imperial bearings with a patented new locking mechanism that improves the safety and productivity of your operation:

- Tightening of fasteners replaces blows of hammer
- Does not require use of feeler gauges or other special tools
- New lockplate for simple installation
- Installation/removal only requires one person
- Mounts/dismounts from same side of bearing
- Assembled, sealed and lubricated at the factory, and shaft ready out of box, eliminating the possibility of contamination during installation

ABB Ability™ Smart Sensor ready

The Dodge Safety Mount spherical roller bearing comes ready for installation of the ABB Ability Smart Sensor for mounted bearings.

The ABB Ability Smart Sensor for mounted bearings is an easy-to-use, wireless sensor which monitors the health of Dodge mounted bearings, allowing users to reduce downtime, improve reliability, and operate safely.



Safety Mount options

Dodge Safety Mount spherical roller bearings are offered in split cap and single piece housing options in standard SAF, metric SN, Type E, and Imperial housing dimensions.



Shaft size	SAF		Imperial		
	SAF	ISAF	Imperial	Imperial-E	ISN
4 - 15/16"					
5 - 7/16"					
5 - 15/16"					
6 - 7/16"					
7"					

*Grey boxes indicate the shaft size and housing style has the Safety Mount system.

Reliability in harsh applications

Safety Mount spherical roller bearings feature a triple-lip contact seal and corrosion-resistant flinger sealing system which prevents contamination from entering the product during installation and operation.

For higher speed and/or high temperature applications, the Dodge Safety Mount spherical roller bearing is offered with a labyrinth seal option which features corrosion-resistant flinger and a steel clearance seal. Both seal options offer maximum sealing protection to extend the service life of the bearing.

Easy to install and remove, and highly reliable even in the harshest environments, the Dodge Safety Mount spherical roller bearing is ideally suited for bulk material and air handling applications, as well as various other demanding industrial applications.