

BALDOR • RELIANCE

Customer information packet

ZDWNM3611T

3HP, 1760RPM, 3PH, 60HZ, 184TC, 3640M, TENV, F1

Class - None

Division - Not Applicable

Specifications

Enclosure	TENV
Frame	184TC
Frame Material	Steel
Frequency	60.00 Hz
Haz Area Class and Group	None
Haz Area Division	Not Applicable
Motor Letter Type	Three Phase
Output @ Frequency	3.000 HP @ 60 HZ
Phase	3
Synchronous Speed @ Frequency	1800 RPM @ 60 HZ
Voltage @ Frequency	230.0 V @ 60 HZ 460.0 V @ 60 HZ
Agency Approvals	UR CSA
Ambient Temperature	40 °C
Auxiliary Box	NO AUXILLARY BOX
Auxiliary Box Lead Termination	None
Base Indicator	Rigid
Bearing Grease Type	Polyrex EM (-20F +300F)
Blower	None
Current @ Voltage	4.100 A @ 460.0 V 8.200 A @ 230.0 V
Design Code	B
Drip Cover	No Drip Cover
Duty Rating	CONT
Efficiency @ 100% Load	89.5 %
Electrically Isolated Bearing	Not Electrically Isolated
Feedback Device	ENCODER
Front Face Code	Encoder/Feedback Device
Front Shaft Indicator	None
Heater Indicator	No Heater
High Voltage Full Load Amps	4.1 a

Part detail

Revision	H
Type	AC
Mech. spec.	36J562
Base	
Status	PRD/A
Elec. spec.	36WGS952
Layout	36LYJ562
Eff. date	09-27-2024
CD Diagram	CD0005
Poles	04
Leads	9#16
Proprietary	False
Created date	07-03-2012

Insulation Class	H
Inverter Code	Inverter Duty
KVA Code	K
Lifting Lugs	No Lifting Lugs
Locked Bearing Indicator	Locked Bearing
Max Speed	6000 rpm
Motor Lead Exit	Ko Box
Motor Lead Quantity/Wire Size	9 @ 16 AWG
Motor Lead Termination	Flying Leads
Motor Standards	NEMA
Motor Type	3640M
Mounting Arrangement	F1
Number of Poles	4
Overall Length	19.27 IN
Power Factor	78
Product Family	Wash Down
Pulley End Bearing Type	Ball
Pulley Face Code	C-Face
Pulley Shaft Indicator	Standard
Rodent Screen	None
Service Factor	1.00
Shaft Diameter	1.125 IN
Shaft Extension Location	Pulley End
Shaft Ground Indicator	No Shaft Grounding
Shaft Rotation	Reversible
Shaft Slinger Indicator	Shaft Slinger
Speed	1760 rpm
Speed Code	Single Speed
Starting Method	Direct on line
Thermal Device - Bearing	None
Thermal Device - Winding	Normally Closed Thermostat
Vibration Sensor Indicator	No Vibration Sensor
Winding Thermal 1	None
Winding Thermal 2	None

Nameplate

NP1609L					
CAT NO	ZDWNM3611T				
SPEC.	36J562S952Z1				
FRAME	184TC	HP	3 TE		
VOLTS	230/460				
MAG CUR	4.2/2.1	FLA	8.2/4.1		
RPM	1760	RPM MAX	6000		
HZ	60	PH	3	CLASS	H
SER.F.	1.00	DES	B	SL HZ	1.4
NEMA-NOM-EFF	89.5	WK2	0.372		
BLWR V	PH	HZ	A		
RATING	40C AMB-CONT				
DE BRG	6206	ODE BRG	6205		
CC	010A	SER.NO			

**AC Induction Motor Performance Data**

Record # 39007

Typical performance - not guaranteed values

Winding: 36WGS952	Type: 3640M	Enclosure: TENV
--------------------------	--------------------	------------------------

Nameplate Data			General Characteristics at 460 V, 60 Hz: High Volt Connection		
Rated Output (HP)	3		Full Load Torque	9.1 LB-FT	
Volts	208-230/460		Start Configuration	DOL	
Full Load Amps	8.6-8.2/4.1		Break Down Torque	35 LB-FT	
R.P.M.	1760		Pull-Up Torque	18.8 LB-FT	
Hz	60	Phase	Locked-rotor Torque	22.7 LB-FT	
NEMA Design Code	B	KV/A Code	Starting Current	32.9 Amps	
Service Factor	1		No-load Current	2.09 Amps	
NEMA Nom. Eff.	89.5	P.F.	Line-line Res. @ 25°C.	3.3157 Ohms	
Rating - Duty	40C AMB-CONT		Temp. Rise @ Rated Load	74°C	
S.F. Amps			Temp. Rise @ S.F. Load		

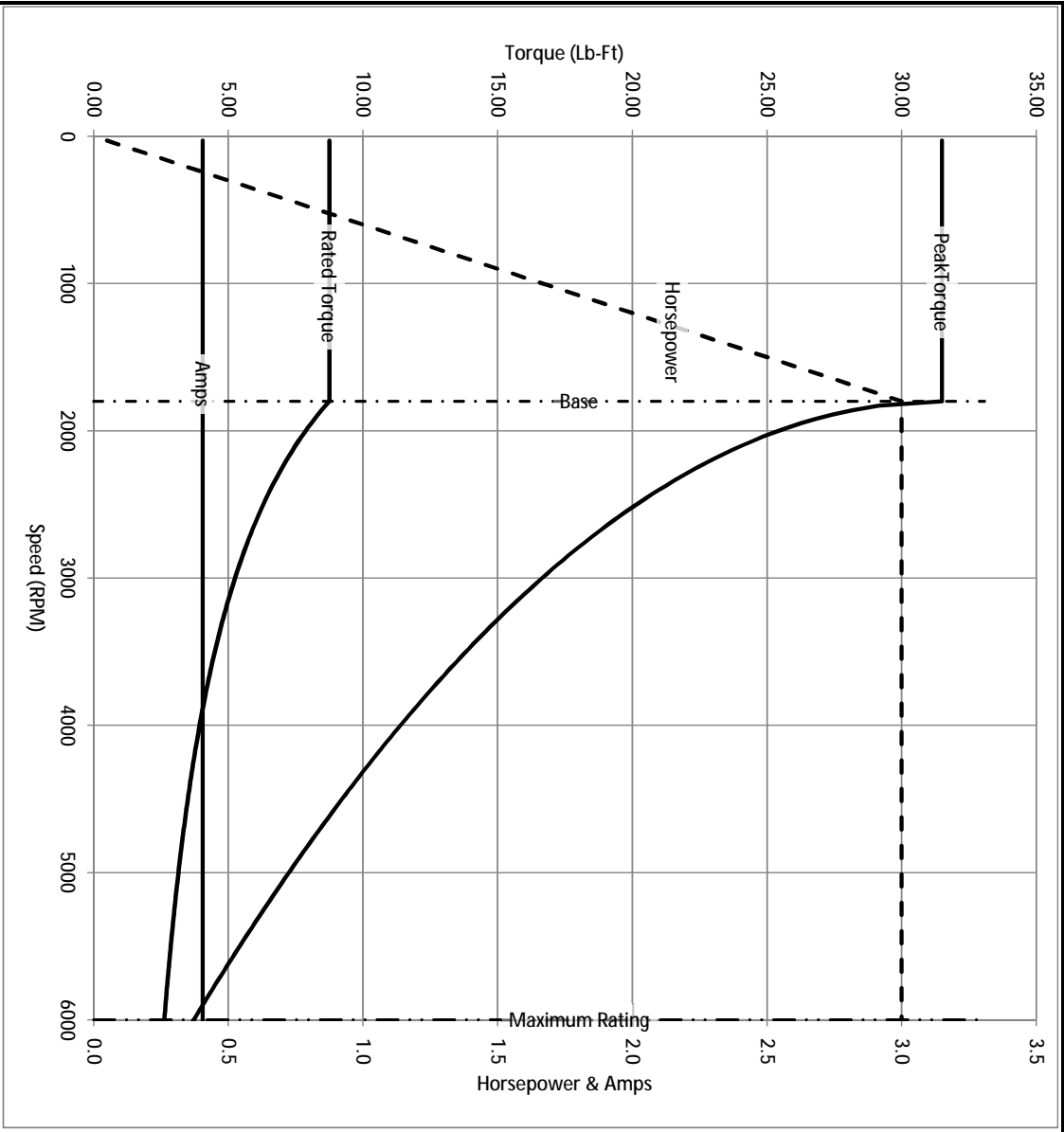
Load Characteristics at 460 Volts, 60 Hz, 3 HP

% of Rated Load	25	50	75	100	125	150	S.F.
Power Factor	38	60	71	78	82	84	
Efficiency	83.8	89.3	90.4	90.3	89.6	88.5	
Speed	1790.1	1780.3	1769.9	1758.7	1746.6	1732.6	
Line Amperes	2.29	2.72	3.34	4.05	4.86	5.75	

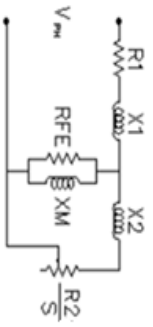
Baldor Electric Company Fort Smith, Arkansas

BALDOR • RELIANCE

Catalog	ZDWNM3611T	NP VOLTS	230/460	ENCLOSURE	TENV	WVE CONN. EQ. CKT OHMS PER PHASE (BASE RATING, 20C)
FRAME	184TC	NP AMPS	8.2/4.1	Base Volts	460	R1 1.640 X1 5.143
HP	3 HP	DUTY	Cont	Base AMPS	4.05	R2 1.260 X2 4.486
BASE SPEED	1800	MAX SAFE RPM	6000	Slip Hz	1.37	XMI 120.167
PHASE/HZ	3/60	AMB ⁰ /INSUL.	40/H	WK ² (lb-ft ²)	0.372	



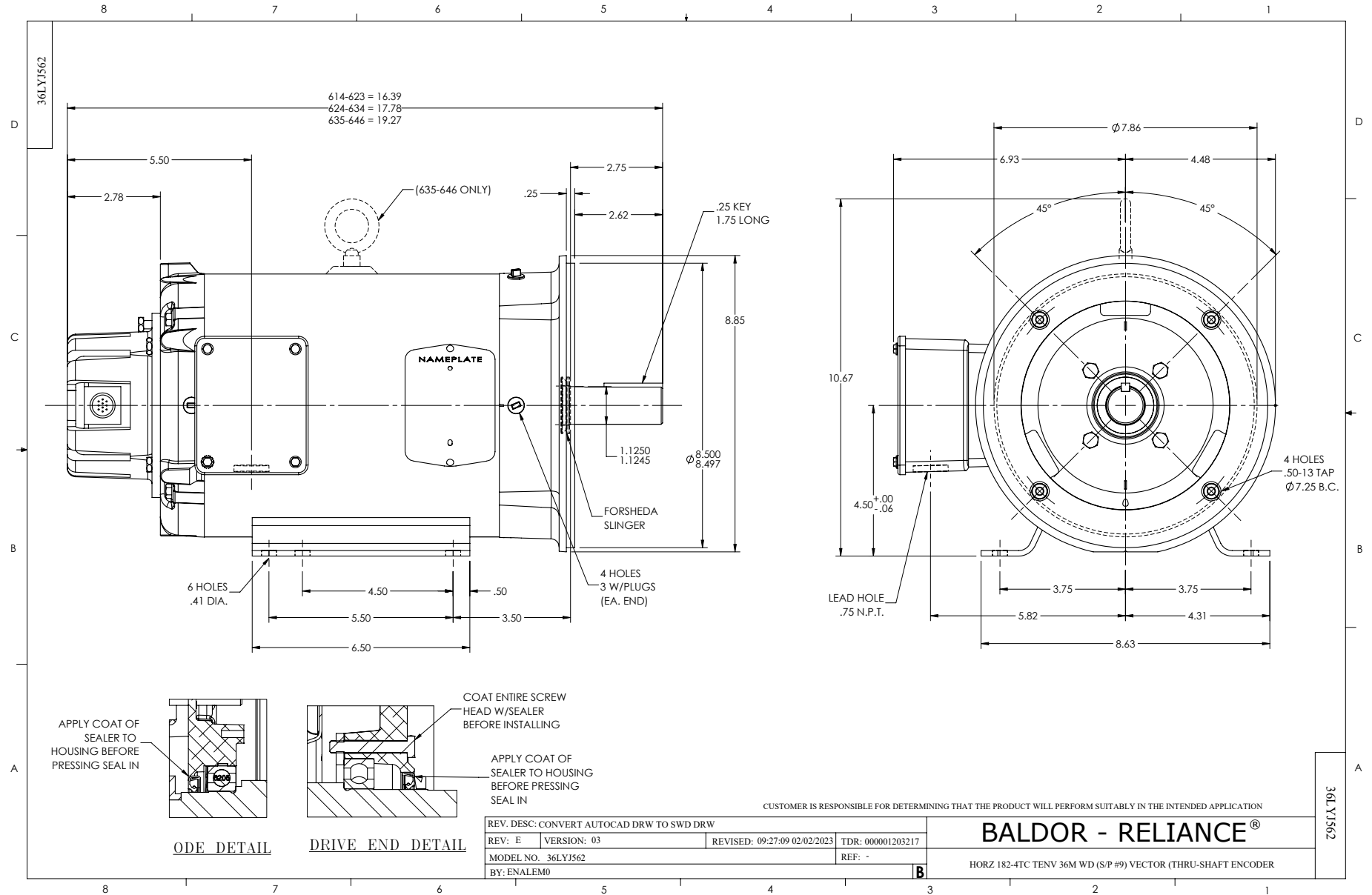
Remarks: Calculated Data



BALDOR
A MEMBER OF THE ABB GROUP

DR BY ENR
CK BY
APP BY ENR
DATE 3/6/2013

A-C MOTOR
PERFORMANCE CURVES
361562S952Z1
ISSUE DATE 3/6/2013



CD0005



LOW VOLTAGE (2Y)



LINE

HIGH VOLTAGE (1Y)



LINE

NOTES:

1. INTERCHANGE ANY TWO LINE LEADS TO REVERSE ROTATION.
2. OPTIONAL THERMOSTATS ARE PROVIDED WHEN SPECIFIED.
3. ACTUAL NUMBER OF INTERNAL PARALLEL CIRCUITS MAY BE A MULTIPLE OF THOSE SHOWN ABOVE.
4. LEAD COLORS ARE OPTIONAL. LEADS MUST ALWAYS BE NUMBERED AS SHOWN.

CD0005

REV. DESC: REVISE TO SHOW OPTIONAL COLORS			
REV. LTR: E	BY: JLP	REVISED: 01/19/99 10:15	TDR: 0171435
S00000		FILE: AAA00005140	MDL: -
		MTL: -	

BALDOR ELECTRIC Co.

3PH, DV, 9 LEADS