



---

# Customer information packet

## ZDWNM3609T

2HP, 1760RPM, 3PH, 60HZ, 182TC, 3628M, TENV, F1

Class - None

Division - Not Applicable

## Specifications

Enclosure	TENV
Frame	182TC
Frame Material	Steel
Frequency	60.00 Hz
Motor Letter Type	Three Phase
Output @ Frequency	2.000 HP @ 60 HZ
Phase	3
Synchronous Speed @ Frequency	1800 RPM @ 60 HZ
Voltage @ Frequency	230.0 V @ 60 HZ 460.0 V @ 60 HZ
XP Class and Group	None
XP Division	Not Applicable
Agency Approvals	UR CSA
Ambient Temperature	40 °C
Auxillary Box	No Auxillary Box
Auxillary Box Lead Termination	None
Base Indicator	Rigid
Bearing Grease Type	Polyrex EM (-20F +300F)
Blower	None
Current @ Voltage	2.900 A @ 460.0 V 5.800 A @ 230.0 V
Design Code	B
Drip Cover	No Drip Cover
Duty Rating	CONT
Efficiency @ 100% Load	88.5 %
Electrically Isolated Bearing	Not Electrically Isolated
Feedback Device	ENCODER
Front Face Code	Encoder/Feedback Device
Front Shaft Indicator	None
Heater Indicator	No Heater
High Voltage Full Load Amps	2.9 a

## Part detail

Revision	B
Type	AC
Mech. spec.	36J562
Base	
Status	PRD/A
Elec. spec.	36WGR049
Layout	36LYJ562
Eff. date	09-13-2017
CD Diagram	CD0005
Poles	04
Leads	9#16
Proprietary	False
Created date	02-23-2016

<b>Insulation Class</b>	H
<b>Inverter Code</b>	Inverter Duty
<b>KVA Code</b>	K
<b>Lifting Lugs</b>	No Lifting Lugs
<b>Locked Bearing Indicator</b>	Locked Bearing
<b>Max Speed</b>	6000 rpm
<b>Motor Lead Exit</b>	Ko Box
<b>Motor Lead Quantity/Wire Size</b>	9 @ 16 AWG
<b>Motor Lead Termination</b>	Flying Leads
<b>Motor Standards</b>	NEMA
<b>Motor Type</b>	3628M
<b>Mounting Arrangement</b>	F1
<b>Number of Poles</b>	4
<b>Overall Length</b>	17.77 IN
<b>Power Factor</b>	73
<b>Product Family</b>	Wash Down
<b>Pulley End Bearing Type</b>	Ball
<b>Pulley Face Code</b>	C-Face
<b>Pulley Shaft Indicator</b>	Standard
<b>Rodent Screen</b>	None
<b>RoHS Status</b>	ROHS COMPLIANT
<b>Service Factor</b>	1.00
<b>Shaft Diameter</b>	1.125 IN
<b>Shaft Extension Location</b>	Pulley End
<b>Shaft Ground Indicator</b>	No Shaft Grounding
<b>Shaft Rotation</b>	Reversible
<b>Shaft Slinger Indicator</b>	Shaft Slinger
<b>Speed</b>	1760 rpm
<b>Speed Code</b>	Single Speed
<b>Starting Method</b>	Direct on line
<b>Thermal Device - Bearing</b>	None
<b>Thermal Device - Winding</b>	Normally Closed Thermostat
<b>Vibration Sensor Indicator</b>	No Vibration Sensor
<b>Winding Thermal 1</b>	None

**Winding Thermal 2**

**None**

---

**Nameplate**

<b>NP1609L</b>					
<b>CAT NO</b>	ZDWNM3609T				
<b>SPEC.</b>	36J562R049Z1				
<b>FRAME</b>	182TC	<b>HP</b>	2 TE		
<b>VOLTS</b>	230/460				
<b>MAG CUR</b>	3.4/1.7	<b>FLA</b>	5.8/2.9		
<b>RPM</b>	1760	<b>RPM MAX</b>	6000		
<b>HZ</b>	60	<b>PH</b>	3	<b>CLASS</b>	H
<b>SER.F.</b>	1.00	<b>DES</b>	B	<b>SL HZ</b>	1.3
<b>NEMA-NOM-EFF</b>	88.5	<b>WK2</b>	0.26		
<b>BLWR V</b>	<b>PH</b>	<b>HZ</b>	<b>A</b>		
<b>RATING</b>	40C AMB-CONT				
<b>DE BRG</b>	6206	<b>ODE BRG</b>	6205		
<b>CC</b>	010A	<b>SER.NO</b>			

**AC Induction Motor Performance Data**

Record # 57979

Typical performance - not guaranteed values

<b>Winding:</b> 36WGR049-R002		<b>Type:</b> 3628M		<b>Enclosure:</b> TENV	
<b>Nameplate Data</b>			<b>460 V, 60 Hz: High Voltage Connection</b>		
<b>Rated Output (HP)</b>	2		<b>Full Load Torque</b>	5.98 LB-FT	
<b>Volts</b>	230/460		<b>Start Configuration</b>	direct on line	
<b>Full Load Amps</b>	5.8/2.9		<b>Breakdown Torque</b>	23.2 LB-FT	
<b>R.P.M.</b>	1760		<b>Pull-up Torque</b>	13.2 LB-FT	
<b>Hz</b>	60	<b>Phase</b>	3	<b>Locked-rotor Torque</b>	14.9 LB-FT
<b>NEMA Design Code</b>	B		<b>KVA Code</b>	K	
<b>Service Factor (S.F.)</b>	1		<b>Starting Current</b>	22.3 A	
<b>NEMA Nom. Eff.</b>	88.5	<b>Power Factor</b>	73	<b>Line-line Res. @ 25°C</b>	5.6879 Ω
<b>Rating - Duty</b>	40C AMB-CONT		<b>Temp. Rise @ Rated Load</b>	59°C	
			<b>Locked-rotor Power Factor</b>	43.2	

**Load Characteristics 460 V, 60 Hz, 2 HP**

<b>% of Rated Load</b>	<b>25</b>	<b>50</b>	<b>75</b>	<b>100</b>	<b>125</b>	<b>150</b>
<b>Power Factor</b>	33	53	65	73	78	81
<b>Efficiency</b>	79.9	86.9	88.7	89	88.5	87.7
<b>Speed</b>	1790.3	1781.4	1772.5	1762	1751	1739
<b>Line amperes</b>	1.82	2.08	2.43	2.88	3.4	3.96

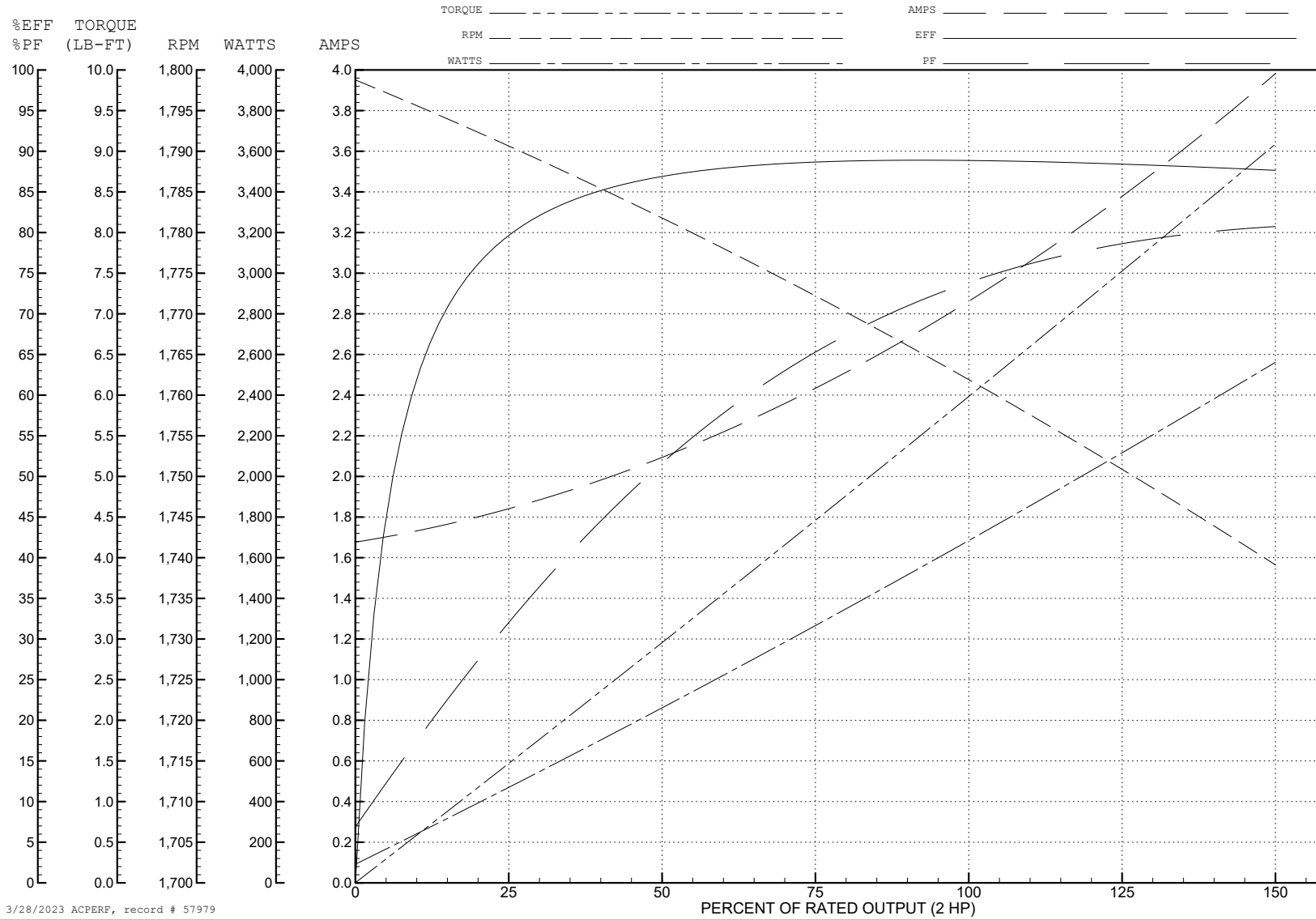
ABB Motors and Mechanical Inc.

WINDING # 36WGR049

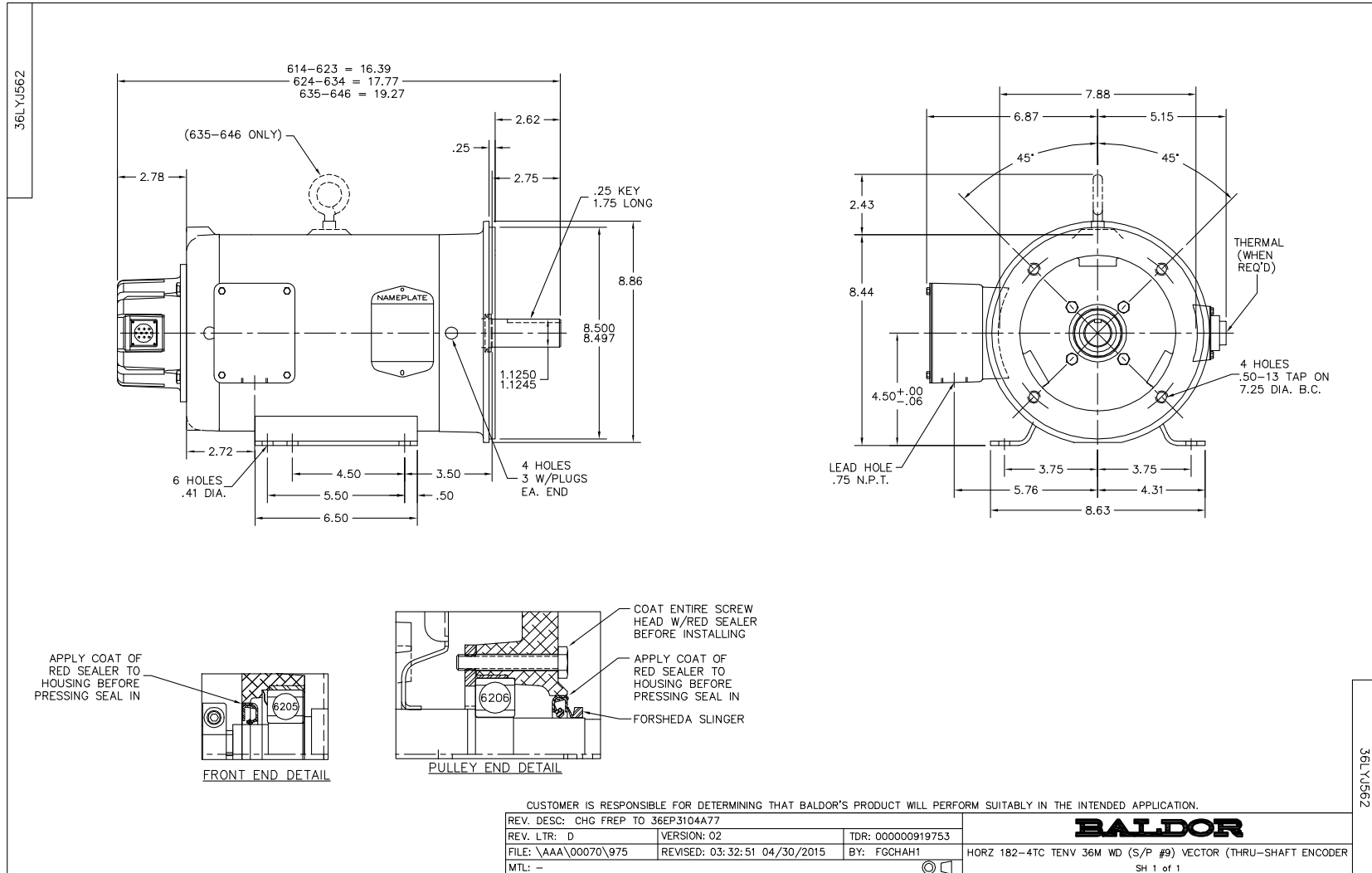
Typical performance - not guaranteed values.

2 HP 3 PH 60 HZ 1760 RPM 460 V 3628M

TORQUES (LB-FT): PO=23.2 PU=13.2 LR=14.9 LRA=22.3



3/28/2023 ACPERF, record # 57979





CD0005



LOW VOLTAGE  
(2Y)



LINE

HIGH VOLTAGE  
(1Y)



LINE

NOTES:

1. INTERCHANGE ANY TWO LINE LEADS TO REVERSE ROTATION.
2. OPTIONAL THERMOSTATS ARE PROVIDED WHEN SPECIFIED.
3. ACTUAL NUMBER OF INTERNAL PARALLEL CIRCUITS MAY BE A MULTIPLE OF THOSE SHOWN ABOVE.
4. LEAD COLORS ARE OPTIONAL. LEADS MUST ALWAYS BE NUMBERED AS SHOWN.

CD0005

REV. DESC: REVISE TO SHOW OPTIONAL COLORS			
REV. LTR: E	BY: JLP	REVISED: 01/19/99 10:15	TDR: 0171435
S00000		FILE: AAA00005140	MDL: -
		MTL: -	

**BALDOR ELECTRIC Co.**

3PH, DV, 9 LEADS