

BALDOR • RELIANCE

Customer information packet

ZDVSNM2333T

15HP, 1765RPM, 3PH, 60HZ, 256TC, 0948M, TENV, F

Class - None

Division - Not Applicable

Copyright © All product information within this document is subject to ABB Motors and Mechanical Inc. copyright © protection, unless otherwise noted.

6/16/2026 12:38:51 AM

Specifications

Enclosure	TENV
Frame	256TC
Frame Material	Iron
Frequency	60.00 Hz
Haz Area Class and Group	None
Haz Area Division	Not Applicable
Motor Letter Type	Three Phase
Output @ Frequency	15.000 HP @ 60 HZ
Phase	3
Synchronous Speed @ Frequency	1800 RPM @ 60 HZ
Voltage @ Frequency	230.0 V @ 60 HZ 460.0 V @ 60 HZ
Agency Approvals	UR CSA
Ambient Temperature	40 °C
Auxiliary Box	NO AUXILLARY BOX
Auxiliary Box Lead Termination	None
Base Indicator	Rigid
Bearing Grease Type	Polyrex EM (-20F +300F)
Blower	None
Current @ Voltage	18.500 A @ 460.0 V 37.000 A @ 230.0 V
Design Code	A
Drip Cover	No Drip Cover
Duty Rating	CONT
Efficiency @ 100% Load	92.4 %
Electrically Isolated Bearing	Not Electrically Isolated
Feedback Device	ENCODER
Front Face Code	Encoder/Feedback Device
Front Shaft Indicator	None
Heater Indicator	No Heater
High Voltage Full Load Amps	18.5 a

Part detail

Revision	AA
Type	AC
Mech. spec.	09K345
Base	
Status	PRD/A
Elec. spec.	09WGX946
Layout	09LYK345
Eff. date	11-14-2023
CD Diagram	CD0005
Poles	04
Leads	9#12
Proprietary	False
Created date	07-16-2012

Insulation Class	F
Inverter Code	Inverter Duty
KVA Code	K
Lifting Lugs	Standard Lifting Lugs
Locked Bearing Indicator	Locked Bearing
Max Speed	2700 rpm
Motor Lead Exit	Ko Box
Motor Lead Quantity/Wire Size	9 @ 12 AWG
Motor Lead Termination	Flying Leads
Motor Standards	NEMA
Motor Type	0948M
Mounting Arrangement	F1
Number of Poles	4
Overall Length	24.05 IN
Power Factor	80
Product Family	General Purpose
Pulley End Bearing Type	Ball
Pulley Face Code	C-Face
Pulley Shaft Indicator	Standard
Rodent Screen	None
Service Factor	1.00
Shaft Diameter	1.625 IN
Shaft Extension Location	Pulley End
Shaft Ground Indicator	No Shaft Grounding
Shaft Rotation	Reversible
Shaft Slinger Indicator	Shaft Slinger
Speed	1765 rpm
Speed Code	Single Speed
Starting Method	Direct on line
Thermal Device - Bearing	None
Thermal Device - Winding	Normally Closed Thermostat
Vibration Sensor Indicator	No Vibration Sensor
Winding Thermal 1	None
Winding Thermal 2	None

Nameplate

NP3304L			
CAT NO	ZDVSNM2333T		
SPEC.	09K345X946Z1		
FRAME	256TC	HP	15 TE
VOLTS	230/460		
MAG CUR	17.8/8.9	FLA	37/18.5
RPM	1765	RPM MAX	2700
HZ	60	PH	3 CLASS F
SER.F.	1.00	SL HZ	0.97
NEMA-NOM-EFF	92.4	WK2	2.1
RATING	40C AMB-CONT		
DE BRG	6309	ODE BRG	6208
CC	010A	SER.NO	
	1.5:1 CHP PWM		

REL S.O.	ZDVSNM2333T	VOLTS	460	ENCLOSURE	TENV	WYE CONN EQ CKT OHMS PER PHASE
FRAME	254TC	AMPS	18.5	MAX SAFE RPM	5400	(AT BASE RATING, 25°C)
HP	15	DUTY	CONT	In (AMPS)	8.9	R1 0.2200 X1 0.9040
BASE SPEED	1765	S.F.	1.00	P.F. @NL/FL	5/81	R2 0.1840 X2 1.0940
PHASE/HZ	3/60	AMB°C/INSUL	40/F	WK ² (lb-ft ²)	2.1	XMI 26.4200

Rated Full Load Data

	RPM	HP	Torque	Volts	Freq-Hz	Amps
Base Speed	1771	15.2	45.0	460	60	18.4
Max Speed	2669	15.0	29.6	460	90	17.1
Min Speed	0	0.0	44.4	18.03	0.97	18.4

Load Performance at Base Speed

	RPM	HP	Torque	Volts	Freq-Hz	Amps
No Load	1799	0.0	0.0	460	60	8.9
1/4	1793	3.8	11.3	460	60	9.9
1/2	1787	7.7	22.5	460	60	12.0
3/4	1780	11.4	33.8	460	60	15.0
Full Load	1771	15.2	45.0	460	60	18.4
O/L	1719	44.9	137.0	460	60	56.6

Blower Data

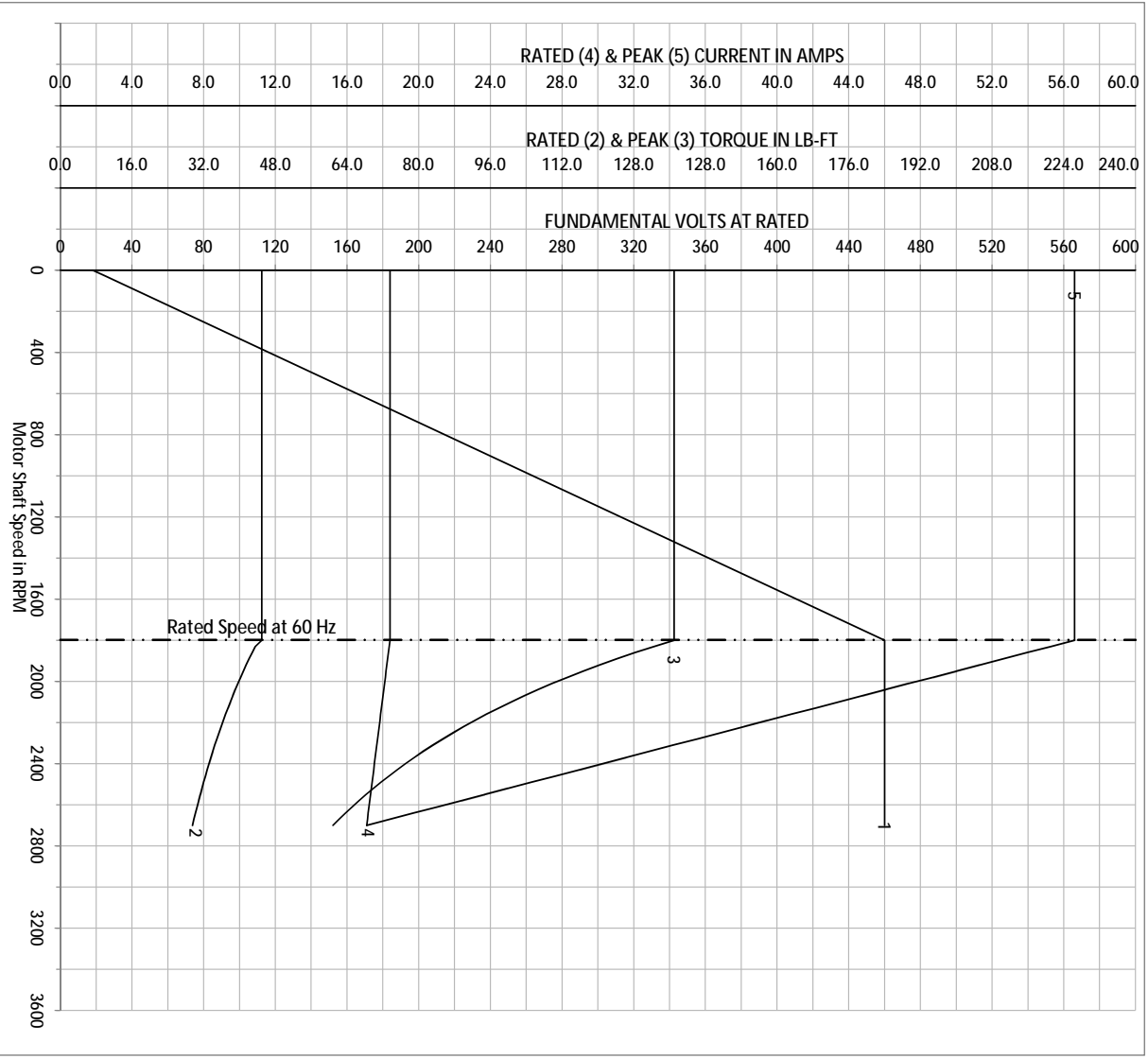
	Volts	Ph/Hz	FL Amps	LR Amps	Frame	CFM

Remarks: Calculated Data
Vector PWM Inverter Duty

 <p>A MEMBER OF THE ABB GROUP</p>	DR BY	E Rowan	<p>A-C MOTOR</p> <p>PERFORMANCE CURVES</p> <p>09K345X946Z1</p>
	CK BY	E Rowan	
	APP BY	E Rowan	
	DATE	1/24/2013	
ISSUE DATE		1/24/2013	

REL S.O.	ZDVSNM2333T	VOLTS	460	ENCLOSURE	TENV	WVE	CONN EQ CKT OHMS PER PHASE
FRAME	254TC	AMPS	18.5	MAX SAFE RPM	5400	R1	0.2200
HP	15	DUTY	1.00	In (AMPS)	8.9	R2	0.1840
BASE SPEED	1765	S.F.	40/F	P.F. @NL/FL	5/81	X1	0.9040
PHASE/HZ	3/60	AMB ⁰ /C/INSUL	40/F	WK ² (lb-ft ²)	2.1	X2	1.0940
						XM	26.4200

Vector PWM Inverter Duty
Variable Speed AC Motor Curves

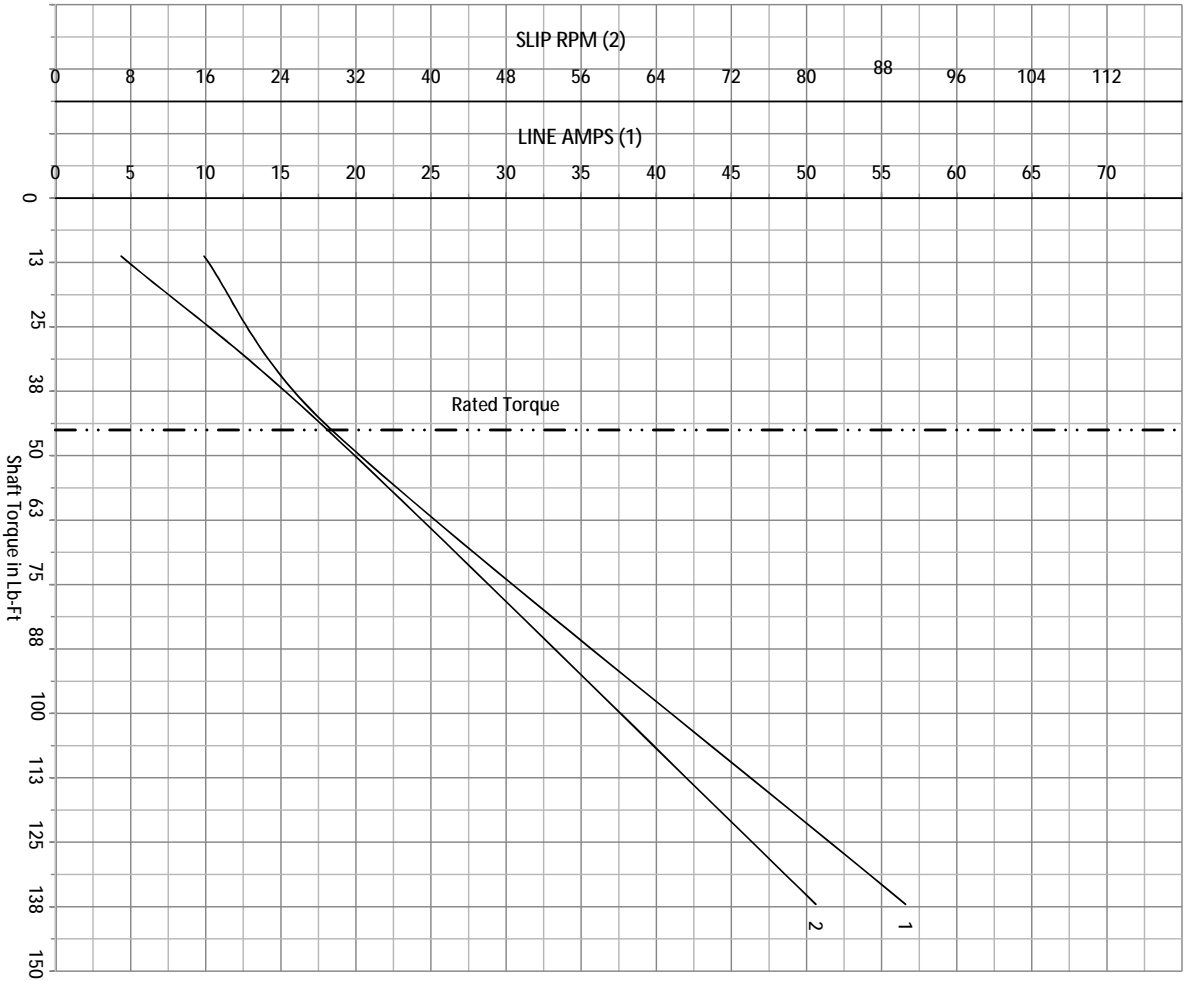


Calculated Data
Data Valid For Nameplate Speed Range only

<p>BALDOR A MEMBER OF THE ABB GROUP</p>	DR BY	E. Rowan	A-C MOTOR PERFORMANCE	09K345X946Z1
	CK BY	E. Rowan	CURVES	SH 1 of 2
	APP BY	E. Rowan		ISSUE DATE
	DATE	1/24/2013		1/24/2013

REL S.O.	ZDVSNM2333T	VOLTS	460	ENCLOSURE	TENV	WYE CONN EQ CKT OHMS PER PHASE
FRAME	254TC	AMPS	18.5	MAX SAFE RPM	5400	(AT BASE RATING, 25°C)
HP	15	DUTY	CONT	In (AMPS)	8.9	R1 0.2200 X1 0.9040
BASE SPEED	1765	S.F.	1.00	P.F. @NL/FL	5/81	R2 0.1840 X2 1.0940
PHASE/HZ	3/60	AMB ⁰ /INSUL	40/F	WK ² (LB-FT ²)	2.1	XM 26.4200

Vector PWM Inverter Duty
Variable Speed AC Motor Curves



Calculated Data

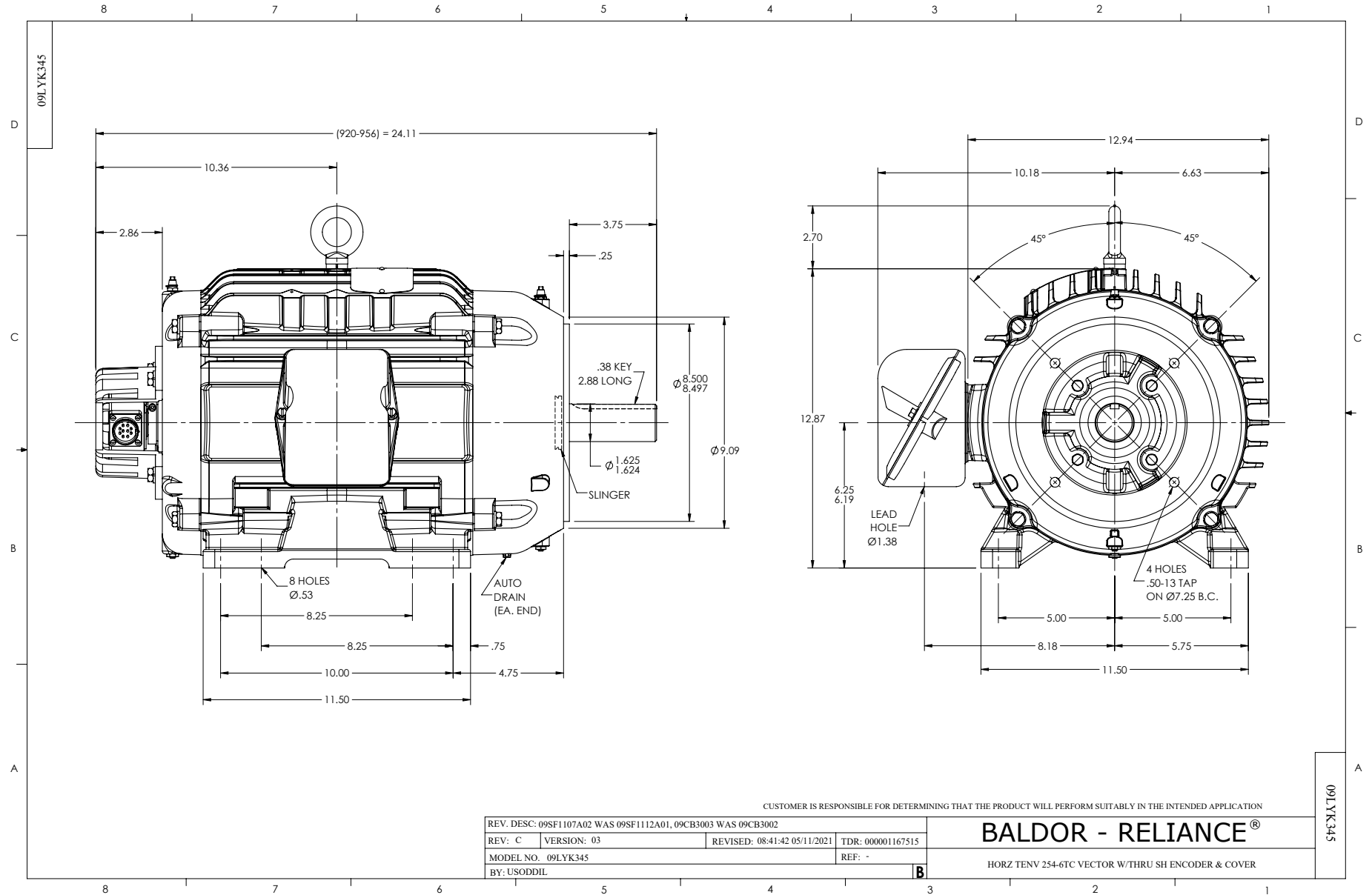
Data Valid For Nameplate Speed Range only



DR BY E Rowan
CK BY E Rowan
APP BY E Rowan
DATE 1/24/2013

A-C MOTOR PERFORMANCE
CURVES

09K345X946Z1
SH 1 of 2
ISSUE DATE 1/24/2013



CD0005

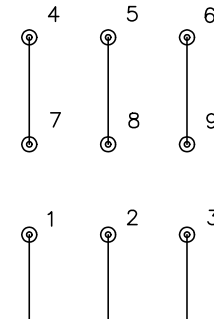


LOW VOLTAGE
(2Y)



LINE

HIGH VOLTAGE
(1Y)



LINE

NOTES:

1. INTERCHANGE ANY TWO LINE LEADS TO REVERSE ROTATION.
2. OPTIONAL THERMOSTATS ARE PROVIDED WHEN SPECIFIED.
3. ACTUAL NUMBER OF INTERNAL PARALLEL CIRCUITS MAY BE A MULTIPLE OF THOSE SHOWN ABOVE.
4. LEAD COLORS ARE OPTIONAL. LEADS MUST ALWAYS BE NUMBERED AS SHOWN.

CD0005

REV. DESC: REVISE TO SHOW OPTIONAL COLORS			
REV. LTR: E	BY: JLP	REVISED: 01/19/99 10:15	TDR: 0171435
S00000		FILE: AAA00005140	MDL: -
		MTL: -	

BALDOR ELECTRIC Co.

3PH, DV, 9 LEADS