

**BALDOR • RELIANCE**

---

# Customer information packet

## ZDVSM4316T

75HP, 1800RPM, 3PH, 60HZ, 365T, TEFC, FOOT,  
Class - None  
Division - Not Applicable

## Specifications

Enclosure	TEFC
Frame	365T
Frame Material	Iron
Frequency	60.00 Hz 90.00 Hz
Haz Area Class and Group	None
Haz Area Division	Not Applicable
Motor Letter Type	Three Phase
Output @ Frequency	75.000 HP @ 60 HZ 75.000 HP @ 90 HZ
Phase	3
Synchronous Speed @ Frequency	3000 RPM @ 90 HZ
Voltage @ Frequency	460.0 V @ 60 HZ 460.0 V @ 90 HZ 230.0 V @ 90 HZ 230.0 V @ 60 HZ
Agency Approvals	CCSA US
Ambient Temperature	40 °C
Auxillary Box	No Auxillary Box
Base Indicator	Rigid
Bearing Grease Type	Polyrex EM (-20F +300F)
Constant Torque Speed Range	1000:1
Current @ Voltage	89.200 A @ 460.0 V 85.600 A @ 460.0 V 178.000 A @ 230.0 V 171.000 A @ 230.0 V
Design Code	A
Drip Cover	No Drip Cover
Duty Rating	CONT
Feedback Device	TACHOMETER
Heater Indicator	No Heater
High Voltage Full Load Amps	85.6 a

## Part detail

Revision	P
Type	AC
Mech. spec.	
Base	
Status	PRD/A
Elec. spec.	A36WG0427
Layout	617438-426
Eff. date	09-27-2023
CD Diagram	416820-002
Poles	04
Leads	3#2,6#4
Proprietary	False
Created date	10-19-2010

<b>Insulation Class</b>	F
<b>Inverter Code</b>	Inverter Duty
<b>KVA Code</b>	J
<b>Lifting Lugs</b>	No Lifting Lugs
<b>Max Speed</b>	3600 rpm
<b>Motor Lead Quantity/Wire Size</b>	3 @ 2 AWG
<b>Motor Standards</b>	NEMA
<b>Motor Type</b>	A36068M
<b>Mounting Arrangement</b>	F1
<b>Number of Poles</b>	4
<b>Overall Length</b>	36.75 IN
<b>Pulley End Bearing Type</b>	Ball
<b>Pulley Face Code</b>	Standard
<b>Service Factor</b>	1.00
<b>Shaft Ground Indicator</b>	No Shaft Grounding
<b>Shaft Rotation</b>	Reversible
<b>Shaft Slinger Indicator</b>	No Slinger
<b>Speed</b>	1785 rpm 2675 rpm
<b>Speed Code</b>	Single Speed
<b>Starting Method</b>	Direct on line
<b>Thermal Device - Bearing</b>	None
<b>Thermal Device - Winding</b>	Normally Closed Thermostat

**Nameplate**

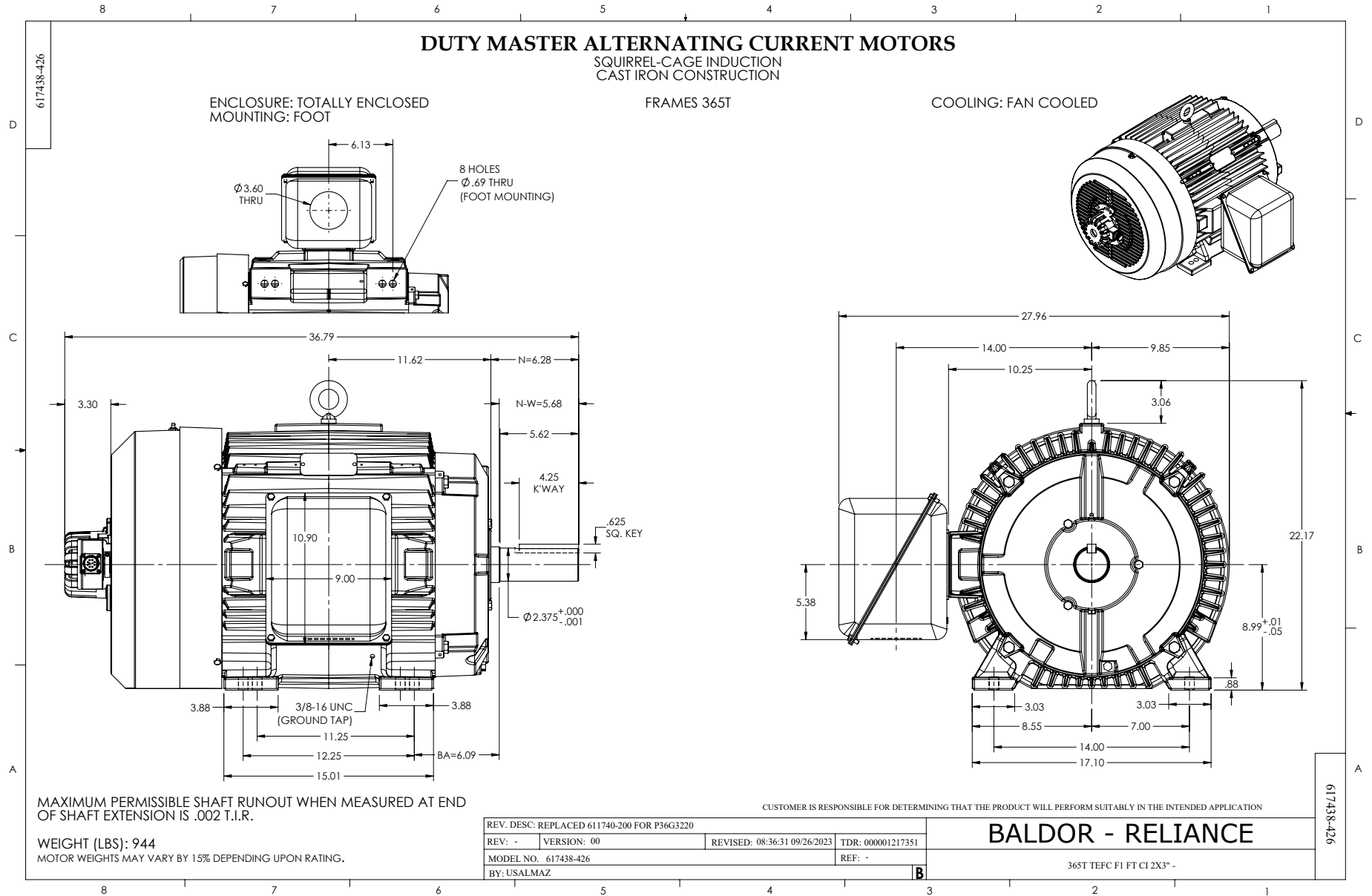
**000613007HV**

<b>CAT NO</b>	ZDVSM4316T		<b>SPEC NO.</b>	P36G3220			
<b>SER.NO.</b>			<b>FRAME</b>	365T			
	<b>HP</b>	<b>RPM</b>	<b>VOLTS</b>	<b>AMPS</b>	<b>HZ</b>	<b>TYPE</b>	<b>P</b>
<b>BASE</b>	75	1785	230/460	178/89.2	60	SF	1.00
<b>MAX</b>	75	2675	230/460	171/85.6	90	<b>INSUL.CLASS</b>	F
<b>DRIVE END BEARING</b>	65BC03J30X		<b>CONSTANT TORQUE</b>	<b>DUTY</b>	CONT	<b>AMB</b>	40
<b>OPP D.E. BEARING</b>	65BC03J30X		1000 1	<b>ENCL</b>	TEFC	<b>PHASE</b>	3
<b>DESIGN NO.</b>	A36WG0427-R002		<b>FLUX AMPS</b>	61.4/30.7		<b>VPWM INVERTER READY</b>	
<b>MAX SPEED/RPM</b>	3600		<b>OVERTEMP PROT</b>	2	<b>WK2</b>	15.71	<b>POLES</b> 4 <b>WEIGHT</b>





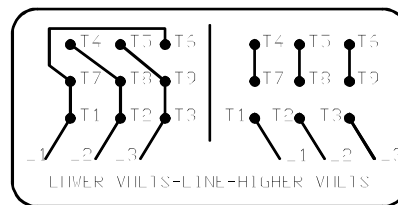
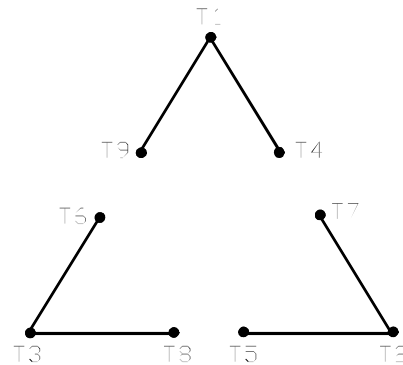






416820-002

A-C MOTOR  
 CONNECTION DIAGRAM  
 STANDARD 9 LEAD DELTA-CONNECTED



(N.P. 1575-B)

416820-002

REV. DESC: FONT CHANGE FOR PDF SEARCHABLE		
REV. LTR: A	VERSION: 01	TDR: 000001009382
FILE: \MGA\00000\661	REVISED: 02:46:19 02/13/2020	BY: MGHMTT
MTL: -	© □	

**BALDOR - RELIANCE®**

CONN DIAG - STANDARD 9 LEAD, DELTA-CONNECTED

SH 1 of 1