

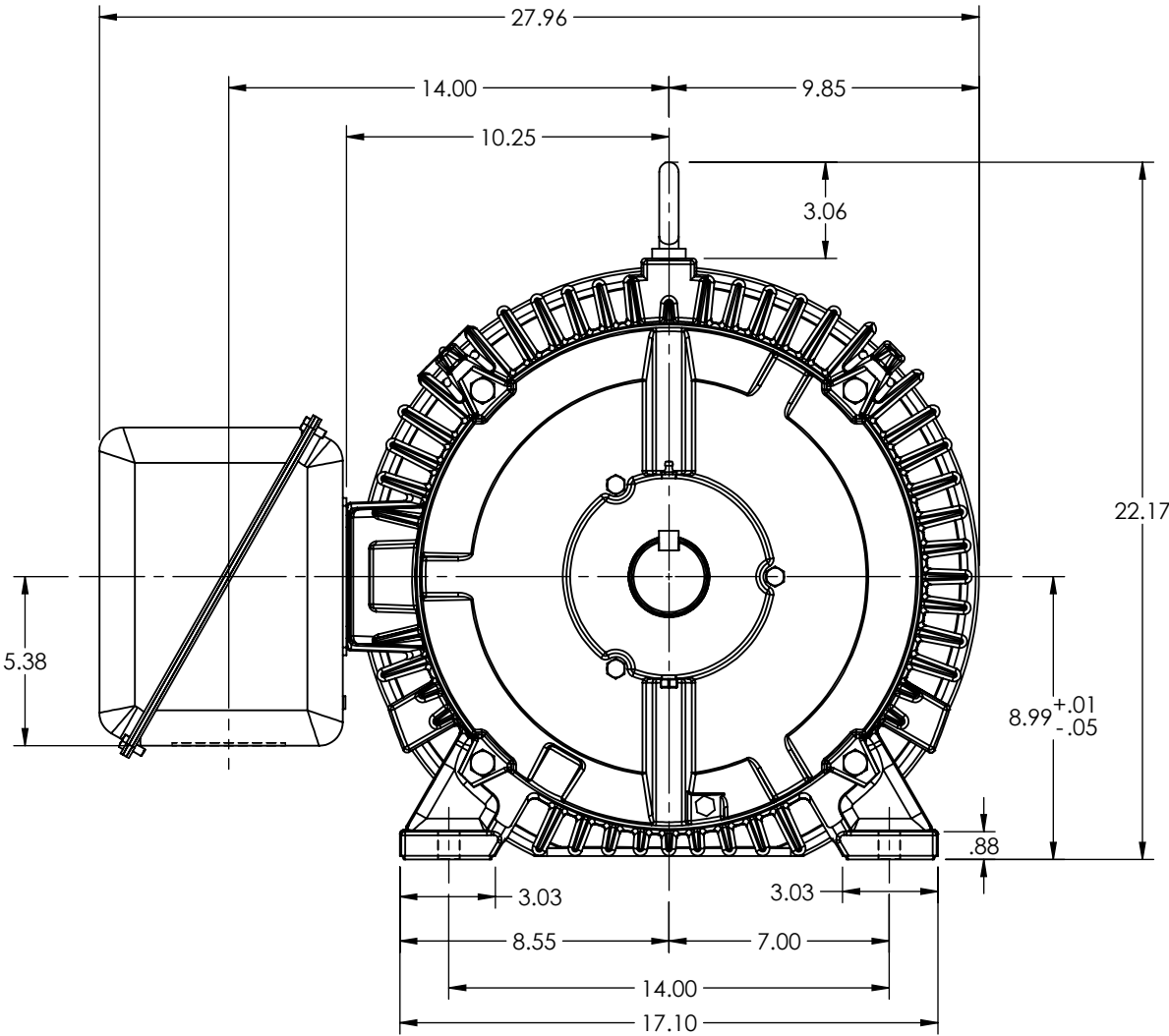
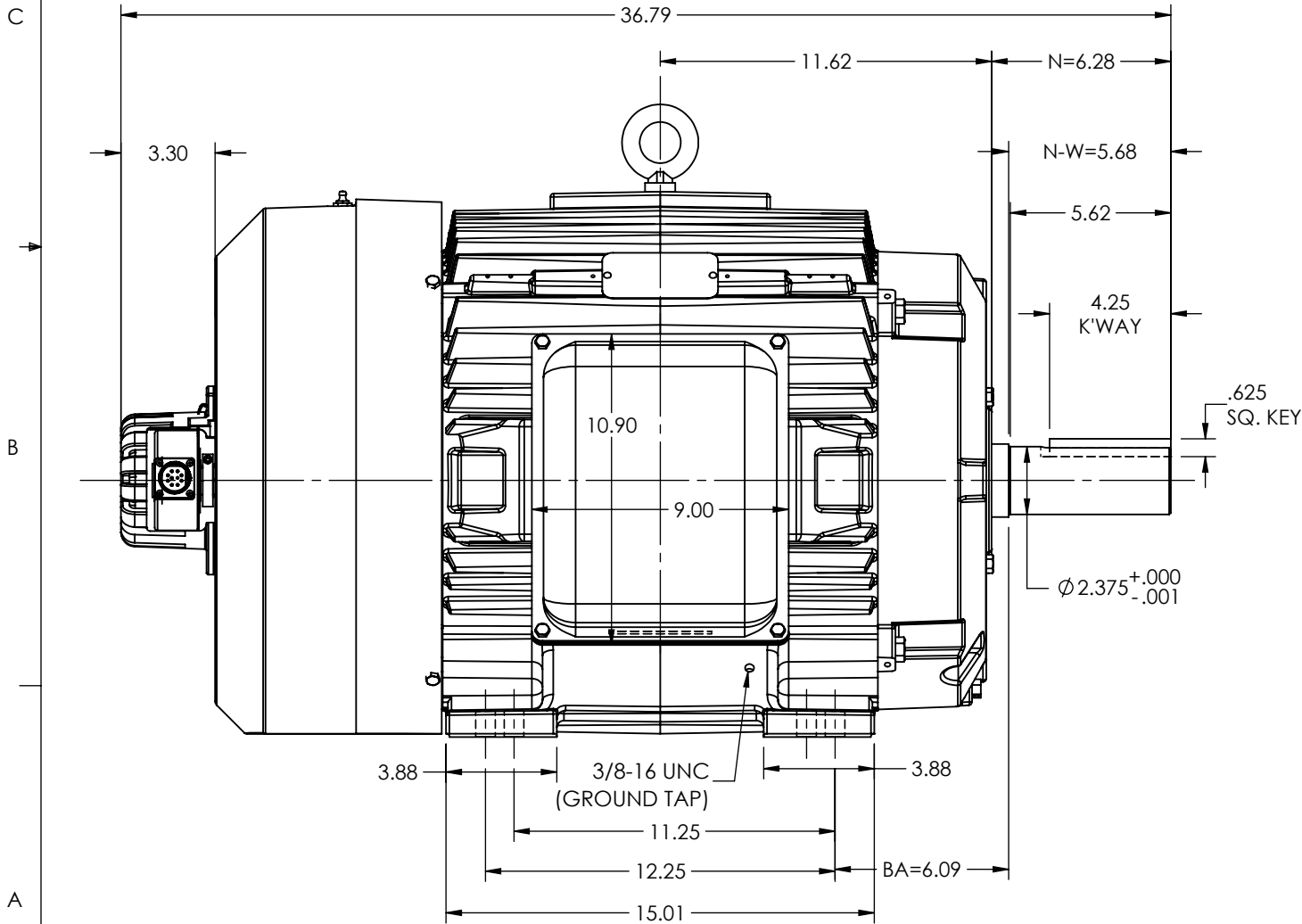
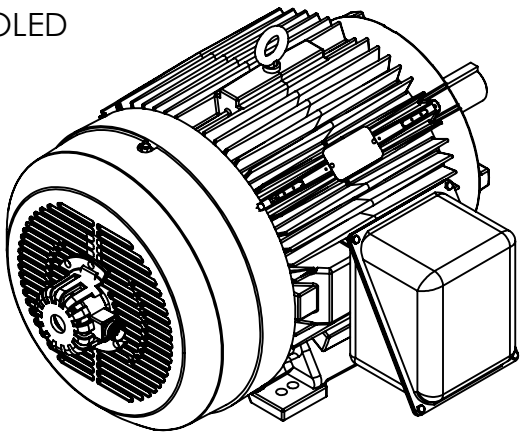
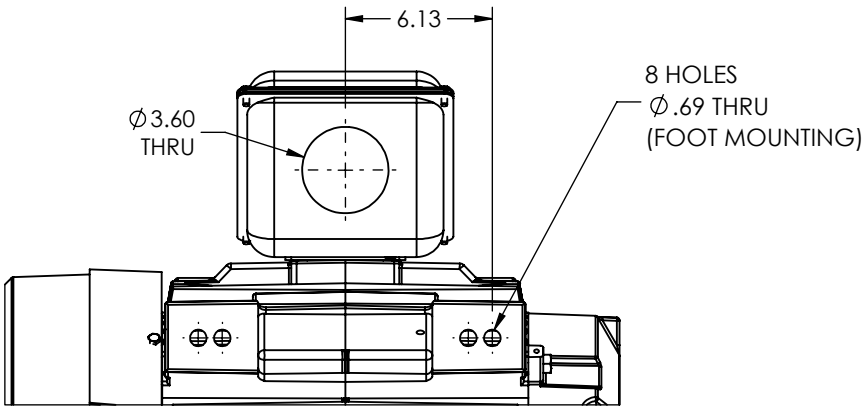
DUTY MASTER ALTERNATING CURRENT MOTORS

SQUIRREL-CAGE INDUCTION
CAST IRON CONSTRUCTION

FRAMES 365T

COOLING: FAN COOLED

ENCLOSURE: TOTALLY ENCLOSED
MOUNTING: FOOT



MAXIMUM PERMISSIBLE SHAFT RUNOUT WHEN MEASURED AT END
OF SHAFT EXTENSION IS .002 T.I.R.

WEIGHT (LBS): 944

MOTOR WEIGHTS MAY VARY BY 15% DEPENDING UPON RATING.

CUSTOMER IS RESPONSIBLE FOR DETERMINING THAT THE PRODUCT WILL PERFORM SUITABLY IN THE INTENDED APPLICATION

REV. DESC: REPLACED 611740-200 FOR P36G3220			
REV: -	VERSION: 00	REVISED: 08:36:31 09/26/2023	TDR: 000001217351
MODEL NO. 617438-426			REF: -
BY: USALMAZ			B

BALDOR - RELIANCE

365T TEFC F1 FT C1 2X3" -

617438-426

617438-426