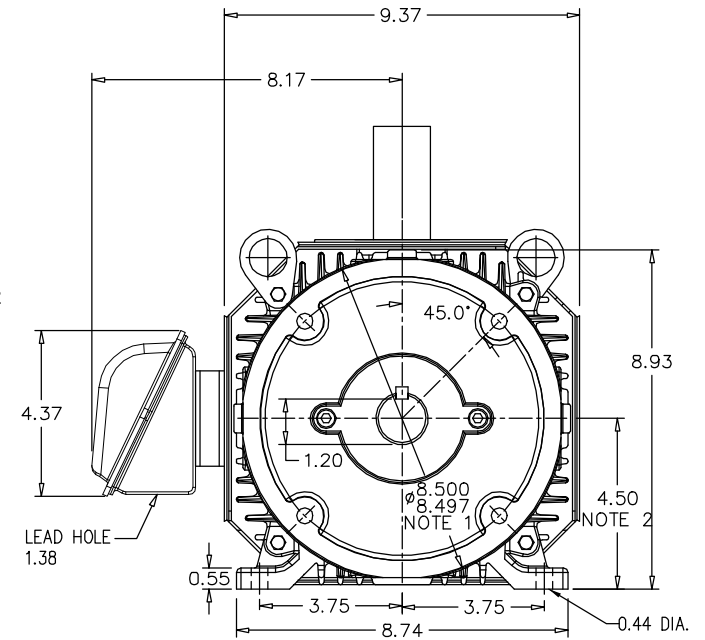
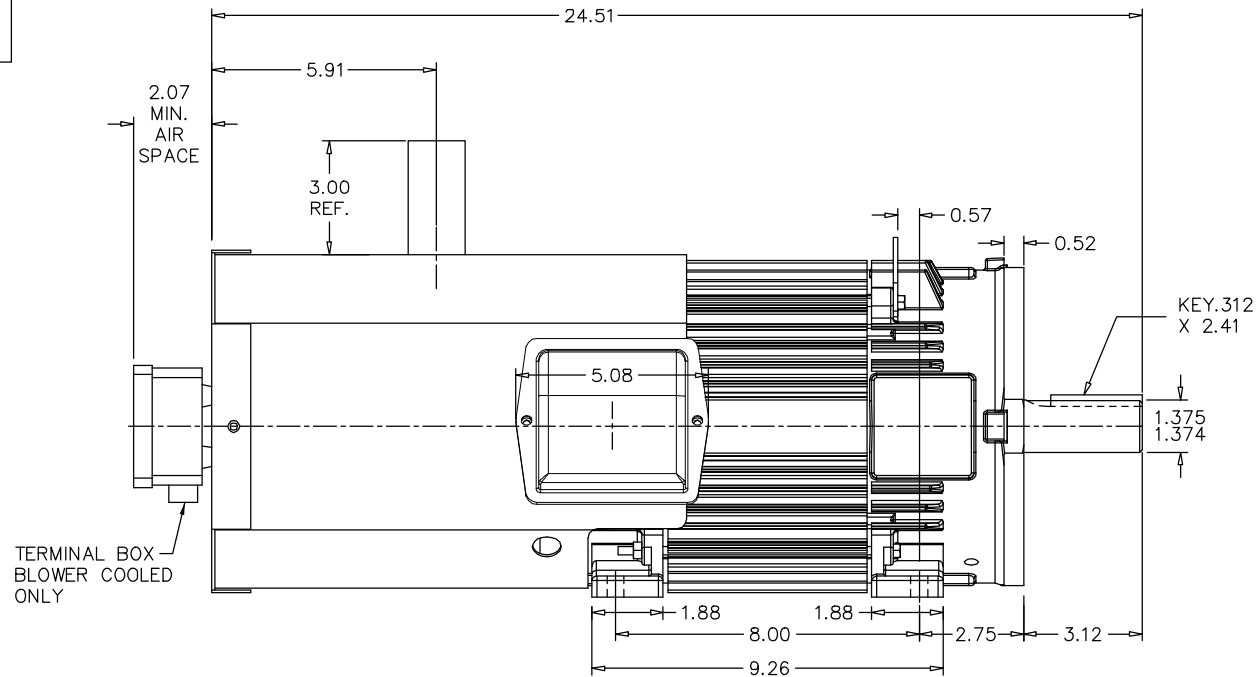


RPM-AC FINNED FRAME VARIABLE SPEED ALTERNATING CURRENT MOTOR FL1831CZ

ENCLOSURE: TOTALLY ENCLOSED
MOUNTING: FOOT/NEMA 210TC C-FACE
DRIVE METHOD: COUPLED OR BELTED

COOLING: BLOWER COOLED
ACCESSORIES: ENCODER



NOTE 1: C-FACE & TACHOMETER MOUNTING
1/2-13 TAP, 1.00 DEEP, ON A 7.25 DIA. BOLT CIRCLE
FACE RUNOUT AND ECCENTRICITY 0.004 MAX. T.I.R.

NOTE 2: SHAFT HEIGHT WILL NOT BE EXCEEDED
SHIMS UP TO 0.03 INCHES IN THICKNESS ARE USUALLY
REQUIRED FOR COUPLED OR GEARED MACHINES

TERMINAL BOX (40 AMPS)
(706320-003A)
ROTATABLE IN 90° INCREMENTS

MOTOR WEIGHT: 133 LBS. (MAY VARY 15%)
DIMENSIONS ARE IN INCHES SCALE: 1.00

CUSTOMER IS RESPONSIBLE FOR DETERMINING THAT THIS PRODUCT WILL PERFORM SUITABLY IN THE INTENDED APPLICATION.

REV. DESC: INITIAL RELEASE		
REV. LTR: -	VERSION: 00	TDR: 000001063820
FILE: \RG6\00028\992	REVISED: 03:05:29 03/09/2018	BY: RGGWT
MTL: -		

BALDOR

DIM SHT,RPMAC,TEBC,FL1831CZ,ENCODER

SH 1 of 1