



---

# Customer information packet

## ZDNM3767T

5HP, 1765RPM, 3PH, 60HZ, 213TC, 0740M, TENV, F1

Class - None

Division - Not Applicable

## Specifications

Enclosure	TENV
Frame	213TC
Frame Material	Iron
Frequency	60.00 Hz
Motor Letter Type	Three Phase
Output @ Frequency	5.000 HP @ 60 HZ
Phase	3
Synchronous Speed @ Frequency	1800 RPM @ 60 HZ
Voltage @ Frequency	230.0 V @ 60 HZ 460.0 V @ 60 HZ
XP Class and Group	None
XP Division	Not Applicable
Agency Approvals	CSA UR
Ambient Temperature	40 °C
Auxillary Box	No Auxillary Box
Auxillary Box Lead Termination	None
Base Indicator	Rigid
Bearing Grease Type	Polyrex EM (-20F +300F)
Blower	None
Current @ Voltage	6.200 A @ 460.0 V 12.400 A @ 230.0 V
Design Code	B
Drip Cover	No Drip Cover
Duty Rating	CONT
Efficiency @ 100% Load	89.5 %
Electrically Isolated Bearing	Not Electrically Isolated
Feedback Device	ENCODER
Front Shaft Indicator	None
Heater Indicator	No Heater
High Voltage Full Load Amps	6.2 a
Insulation Class	H

## Part detail

Revision	B
Type	AC
Mech. spec.	07J134
Base	
Status	PRD/A
Elec. spec.	07WGY566
Layout	07LYJ134
Eff. date	03-30-2021
CD Diagram	CD0005
Poles	04
Leads	9#14
Proprietary	False
Created date	11-19-2020

<b>Inverter Code</b>	<b>Inverter Duty</b>
<b>KVA Code</b>	<b>J</b>
<b>Lifting Lugs</b>	<b>Standard Lifting Lugs</b>
<b>Locked Bearing Indicator</b>	<b>Locked Bearing</b>
<b>Max Speed</b>	<b>6000 rpm</b>
<b>Motor Lead Quantity/Wire Size</b>	<b>9 @ 14 AWG</b>
<b>Motor Lead Termination</b>	<b>Flying Leads</b>
<b>Motor Standards</b>	<b>NEMA</b>
<b>Motor Type</b>	<b>0740M</b>
<b>Mounting Arrangement</b>	<b>F1</b>
<b>Number of Poles</b>	<b>4</b>
<b>Overall Length</b>	<b>20.40 IN</b>
<b>Power Factor</b>	<b>83</b>
<b>Product Family</b>	<b>General Purpose</b>
<b>Pulley End Bearing Type</b>	<b>Ball</b>
<b>Pulley Face Code</b>	<b>C-Face</b>
<b>Pulley Shaft Indicator</b>	<b>Standard</b>
<b>Rodent Screen</b>	<b>None</b>
<b>Service Factor</b>	<b>1.00</b>
<b>Shaft Diameter</b>	<b>1.375 IN</b>
<b>Shaft Ground Indicator</b>	<b>No Shaft Grounding</b>
<b>Shaft Rotation</b>	<b>Reversible</b>
<b>Shaft Slinger Indicator</b>	<b>No Slinger</b>
<b>Speed</b>	<b>1765 rpm</b>
<b>Speed Code</b>	<b>Single Speed</b>
<b>Starting Method</b>	<b>Direct on line</b>
<b>Thermal Device - Bearing</b>	<b>None</b>
<b>Thermal Device - Winding</b>	<b>Normally Closed Thermostat</b>
<b>Vibration Sensor Indicator</b>	<b>No Vibration Sensor</b>
<b>Winding Thermal 1</b>	<b>None</b>
<b>Winding Thermal 2</b>	<b>None</b>

**Nameplate**

<b>NP1167L</b>	
<b>CAT NO</b>	ZDNM3767T
<b>SPEC.</b>	07J134Y566Z1
<b>FRAME</b>	213TC <b>HP</b> 5 TE
<b>VOLTS</b>	230/460
<b>MAG CUR</b>	5/2.5 <b>FLA</b> 12.4/6.2
<b>RPM</b>	1765 <b>RPM MAX</b> 6000
<b>HZ</b>	60 <b>PH</b> 3 <b>CLASS</b> H
<b>SER.F.</b>	1.00 <b>DES</b> B <b>SL HZ</b> 1.2
<b>NEMA-NOM-EFF</b>	89.5 <b>WK2</b> 0.98
<b>BLWR V</b>	PH      HZ      A
<b>RATING</b>	40C AMB-CONT
<b>DE BRG</b>	6307 <b>ODE BRG</b> 6206
<b>CC</b>	010A <b>SN</b>

**AC Induction Motor Performance Data**

Record # 62111

Typical performance - not guaranteed values

<b>Winding:</b> 07WGY566-R009		<b>Type:</b> 0740M		<b>Enclosure:</b> TENV	
<b>Nameplate Data</b>			<b>460 V, 60 Hz: Single Voltage Motor</b>		
<b>Rated Output (HP)</b>	5	<b>Full Load Torque</b>	14.7 LB-FT		
<b>Volts</b>	230/460	<b>Start Configuration</b>	direct on line		
<b>Full Load Amps</b>	12.4/6.2	<b>Breakdown Torque</b>	49.7 LB-FT		
<b>R.P.M.</b>	1765	<b>Pull-up Torque</b>	22.7 LB-FT		
<b>Hz</b>	60 <b>Phase</b>	3	<b>Locked-rotor Torque</b>	32 LB-FT	
<b>NEMA Design Code</b>	<b>B KVA Code</b>	J	<b>Starting Current</b>	47 A	
<b>Service Factor (S.F.)</b>		1	<b>No-load Current</b>	2.46 A	
<b>NEMA Nom. Eff.</b>	89.5 <b>Power Factor</b>	83	<b>Line-line Res. @ 25°C</b>	2.26 Ω	
<b>Rating - Duty</b>	40C AMB-CONT		<b>Temp. Rise @ Rated Load</b>	60°C	
			<b>Locked-rotor Power Factor</b>	36.4	
			<b>Rotor inertia</b>	0.984 LB-FT <sup>2</sup>	

**Load Characteristics 460 V, 60 Hz, 5 HP**

<b>% of Rated Load</b>	<b>25</b>	<b>50</b>	<b>75</b>	<b>100</b>	<b>125</b>	<b>150</b>
<b>Power Factor</b>	47	69	78	83	85	87
<b>Efficiency</b>	86.8	90.5	90.9	90.3	89.7	88
<b>Speed</b>	1792	1783	1774	1764	1753	1738
<b>Line amperes</b>	2.85	3.7	4.9	6.16	7.61	9.46

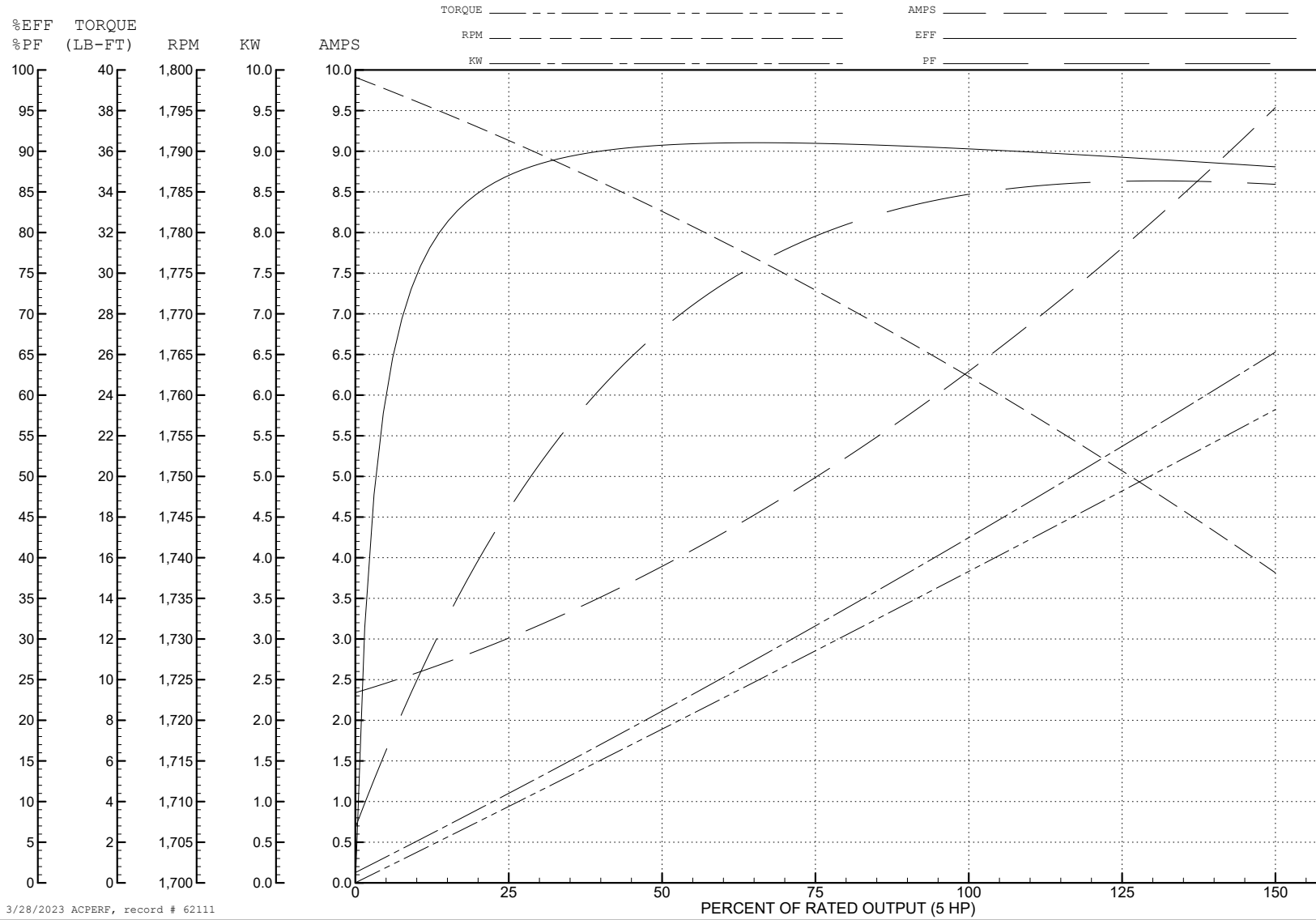
ABB Motors and Mechanical Inc.

WINDING # 07WGY566

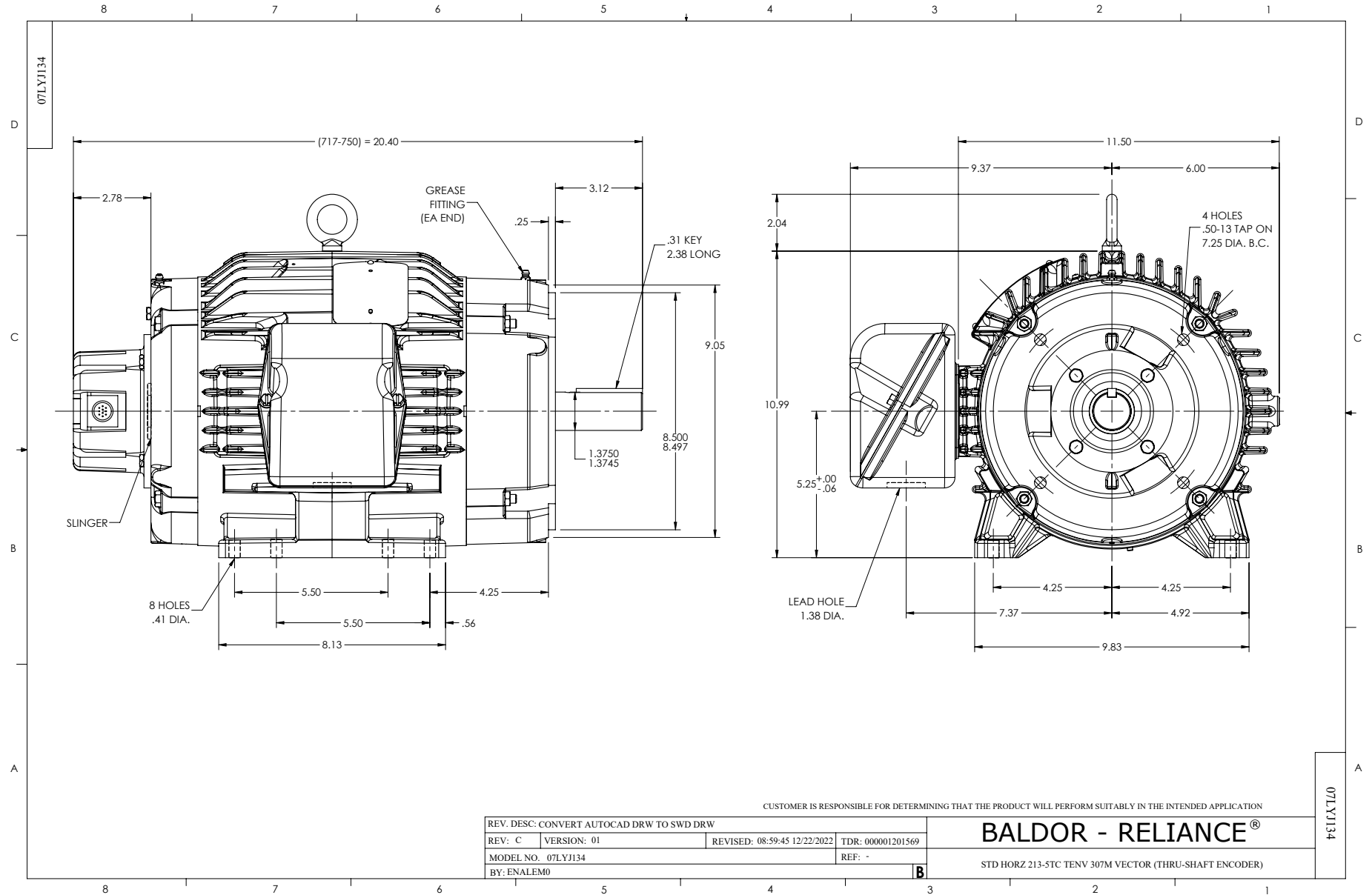
5 HP 3 PH 60 HZ 1765 RPM 460 V 0740M

Typical performance - not guaranteed values.

TORQUES (LB-FT): PO=49.7 PU=22.7 LR=32 LRA=47



3/28/2023 ACPERF, record # 62111



CD0005

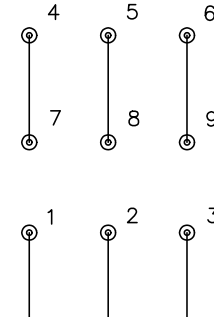


LOW VOLTAGE  
(2Y)



LINE

HIGH VOLTAGE  
(1Y)



LINE

NOTES:

1. INTERCHANGE ANY TWO LINE LEADS TO REVERSE ROTATION.
2. OPTIONAL THERMOSTATS ARE PROVIDED WHEN SPECIFIED.
3. ACTUAL NUMBER OF INTERNAL PARALLEL CIRCUITS MAY BE A MULTIPLE OF THOSE SHOWN ABOVE.
4. LEAD COLORS ARE OPTIONAL. LEADS MUST ALWAYS BE NUMBERED AS SHOWN.

CD0005

REV. DESC: REVISE TO SHOW OPTIONAL COLORS			
REV. LTR: E	BY: JLP	REVISED: 01/19/99 10:15	TDR: 0171435
S00000		FILE: AAA00005140	MDL: -
		MTL: -	

**BALDOR ELECTRIC Co.**

3PH, DV, 9 LEADS