



---

# Customer information packet

## ZDNM3661T

3HP, 1760RPM, 3PH, 60HZ, 184TC, 0632M, TENV, F1

Class - None

Division - Not Applicable

## Specifications

Enclosure	TENV
Frame	184TC
Frame Material	Iron
Frequency	60.00 Hz
Haz Area Class and Group	None
Haz Area Division	Not Applicable
Motor Letter Type	Three Phase
Output @ Frequency	3.000 HP @ 60 HZ
Phase	3
Synchronous Speed @ Frequency	1800 RPM @ 60 HZ
Voltage @ Frequency	230.0 V @ 60 HZ 460.0 V @ 60 HZ
Agency Approvals	UR CSA
Ambient Temperature	40 °C
Auxiliary Box	NO AUXILLARY BOX
Auxiliary Box Lead Termination	None
Base Indicator	Rigid
Bearing Grease Type	Polyrex EM (-20F +300F)
Blower	None
Current @ Voltage	4.200 A @ 460.0 V 8.400 A @ 230.0 V
Design Code	B
Drip Cover	No Drip Cover
Duty Rating	CONT
Efficiency @ 100% Load	88.5 %
Electrically Isolated Bearing	Not Electrically Isolated
Feedback Device	ENCODER
Front Face Code	Encoder/Feedback Device
Front Shaft Indicator	None
Heater Indicator	No Heater
High Voltage Full Load Amps	4.2 a

## Part detail

Revision	L
Type	AC
Mech. spec.	06F550
Base	
Status	PRD/A
Elec. spec.	06WGX388
Layout	06LYF550
Eff. date	06-05-2026
CD Diagram	CD0005
Poles	04
Leads	9#16
Proprietary	False
Created date	07-30-2012

Insulation Class	H
Inverter Code	Inverter Duty
KVA Code	K
Lifting Lugs	Standard Lifting Lugs
Locked Bearing Indicator	Locked Bearing
Max Speed	6000 rpm
Motor Lead Exit	Ko Box
Motor Lead Quantity/Wire Size	9 @ 16 AWG
Motor Lead Termination	Flying Leads
Motor Standards	NEMA
Motor Type	0632M
Mounting Arrangement	F1
Number of Poles	4
Overall Length	17.21 IN
Power Factor	76
Product Family	General Purpose
Pulley End Bearing Type	Ball
Pulley Face Code	C-Face
Pulley Shaft Indicator	Standard
Rodent Screen	None
Service Factor	1.00
Shaft Diameter	1.125 IN
Shaft Extension Location	Pulley End
Shaft Ground Indicator	No Shaft Grounding
Shaft Rotation	Reversible
Shaft Slinger Indicator	No Slinger
Speed	1755 rpm
Speed Code	Single Speed
Starting Method	Direct on line
Thermal Device - Bearing	None
Thermal Device - Winding	Normally Closed Thermostat
Vibration Sensor Indicator	No Vibration Sensor
Winding Thermal 1	None
Winding Thermal 2	None

**Nameplate**

<b>NP4539L</b>			
<b>CAT.NO.</b>	ZDNM3661T		
<b>SPEC.</b>	06F550X388Z1		
<b>FRAME</b>	184TC	<b>H.P.</b>	3 TE
<b>VOLTS</b>	230/460		
<b>MAG. CUR.</b>	4.6/2.3	<b>F.L. AMPS</b>	8.4/4.2
<b>R.P.M.</b>	1755	<b>R.P.M. MAX</b>	6000
<b>HZ.</b>	60	<b>PH.</b>	3 <b>CLASS</b> H
<b>SER.F.</b>	1.00	<b>DES.</b>	B <b>SL HZ</b> 1.5
<b>NEMA NOM. EFF.</b>	88.5	<b>WK2</b>	0.3
<b>BLWR V</b>	<b>PH</b>	<b>HZ</b>	<b>AMPS</b>
<b>RATING</b>	40C AMB-CONT		
<b>DE</b>	6206	<b>ODE</b>	6205
<b>CC</b>	010A <b>SN</b>		
	1000:1 CT/VT		

**AC Induction Motor Performance Data**

Record # 39733

Typical performance - not guaranteed values

<b>Winding:</b> 06WGX388	<b>Type:</b> 0632M	<b>Enclosure:</b> TENV
--------------------------	--------------------	------------------------

Nameplate Data			General Characteristics at 460 V, 60 Hz: High Volt Connection		
Rated Output (HP)	3		Full Load Torque	8.94 LB-FT	
Volts	230/460		Start Configuration	DOL	
Full Load Amps	8.4/4.2		Break Down Torque	32.8 LB-FT	
R.P.M.	1755		Pull-Up Torque	19.4 LB-FT	
Hz	60	Phase	3	Locked-rotor Torque	21.8 LB-FT
NEMA Design Code	B	KV/A Code	K	Starting Current	31.5 Amps
Service Factor	1		No-load Current	2.32 Amps	
NEMA Nom. Eff.	88.5	P.F.	76	Line-line Res. @ 25°C.	4.2584 Ohms
Rating - Duty	40C AMB-CONT		Temp. Rise @ Rated Load	74°C	
S.F. Amps			Temp. Rise @ S.F. Load		

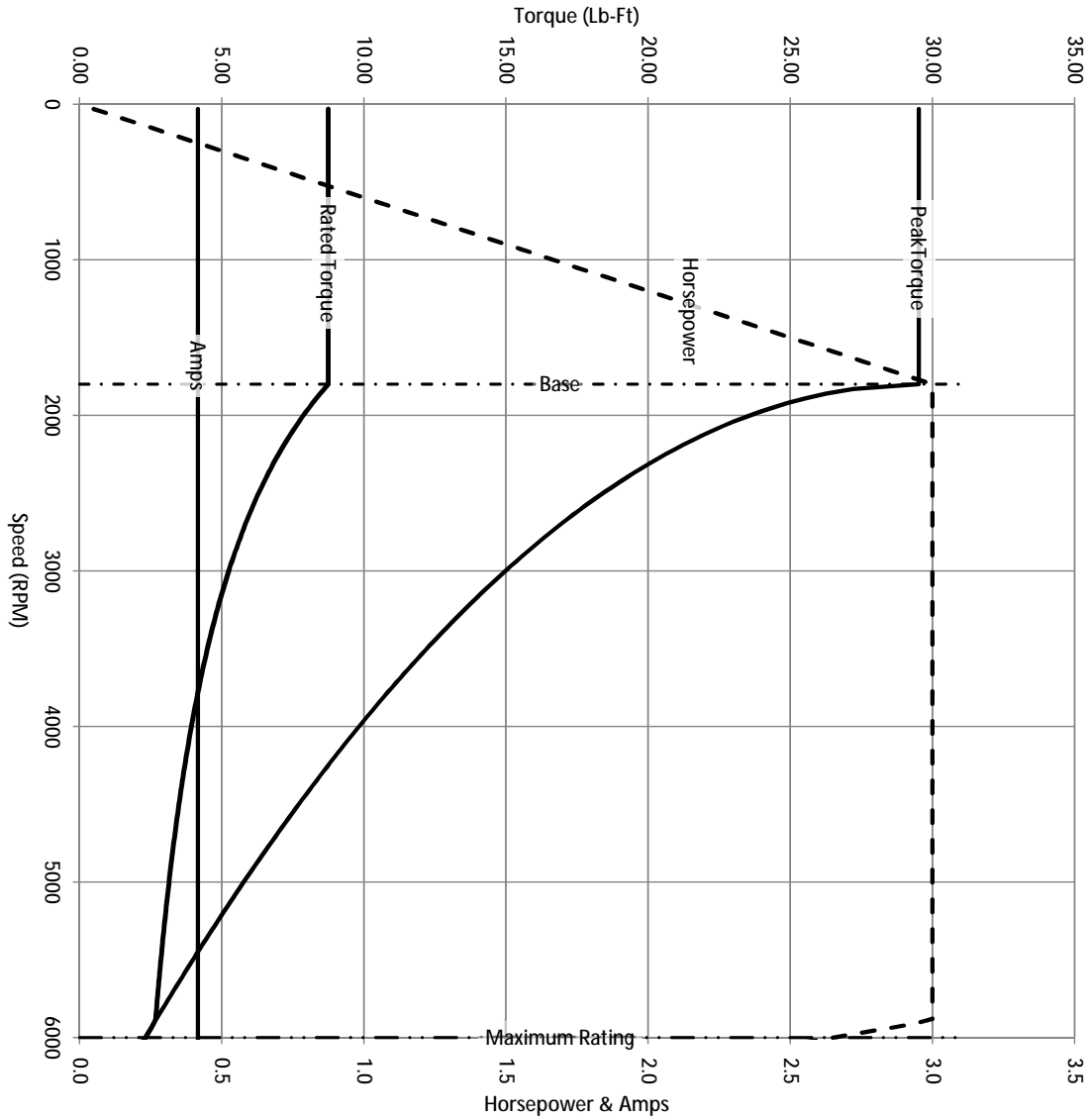
Load Characteristics at 460 Volts, 60 Hz, 3 HP

% of Rated Load	25	50	75	100	125	150	S.F.
Power Factor	34	55	68	76	80	84	
Efficiency	81.5	87.7	89	88.8	88	86.8	
Speed	1789.5	1779.4	1768.6	1756.8	1744.3	1730.6	
Line Amperes	2.49	2.89	3.47	4.16	4.92	5.79	

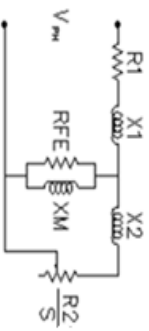
Baldor Electric Company Fort Smith, Arkansas

**BALDOR • RELIANCE**

Catalog	ZDNM3661T	NP VOLTS	230/460	ENCLOSURE	TENV	WYE CONN EQ CKT OHMS PER PHASE (BASE RATING, 200°)
FRAME	184TC	NP AMPS	8.4/4.2	Base Volts	460	R1 2.110 X1 5.101
HP	3 HP	DUTY	Cont	Base AMPS	4.16	R2 1.290 X2 4.266
BASE SPEED	1800	MAX SAFE RPM	6000	Slip Hz	1.43	XM 108.947
PHASE/HZ	3/60	AMB <sup>6</sup> /C/INSUL	40/H	Wk <sup>2</sup> (lb-ft <sup>2</sup> )	0.298	



Remarks: Calculated Data



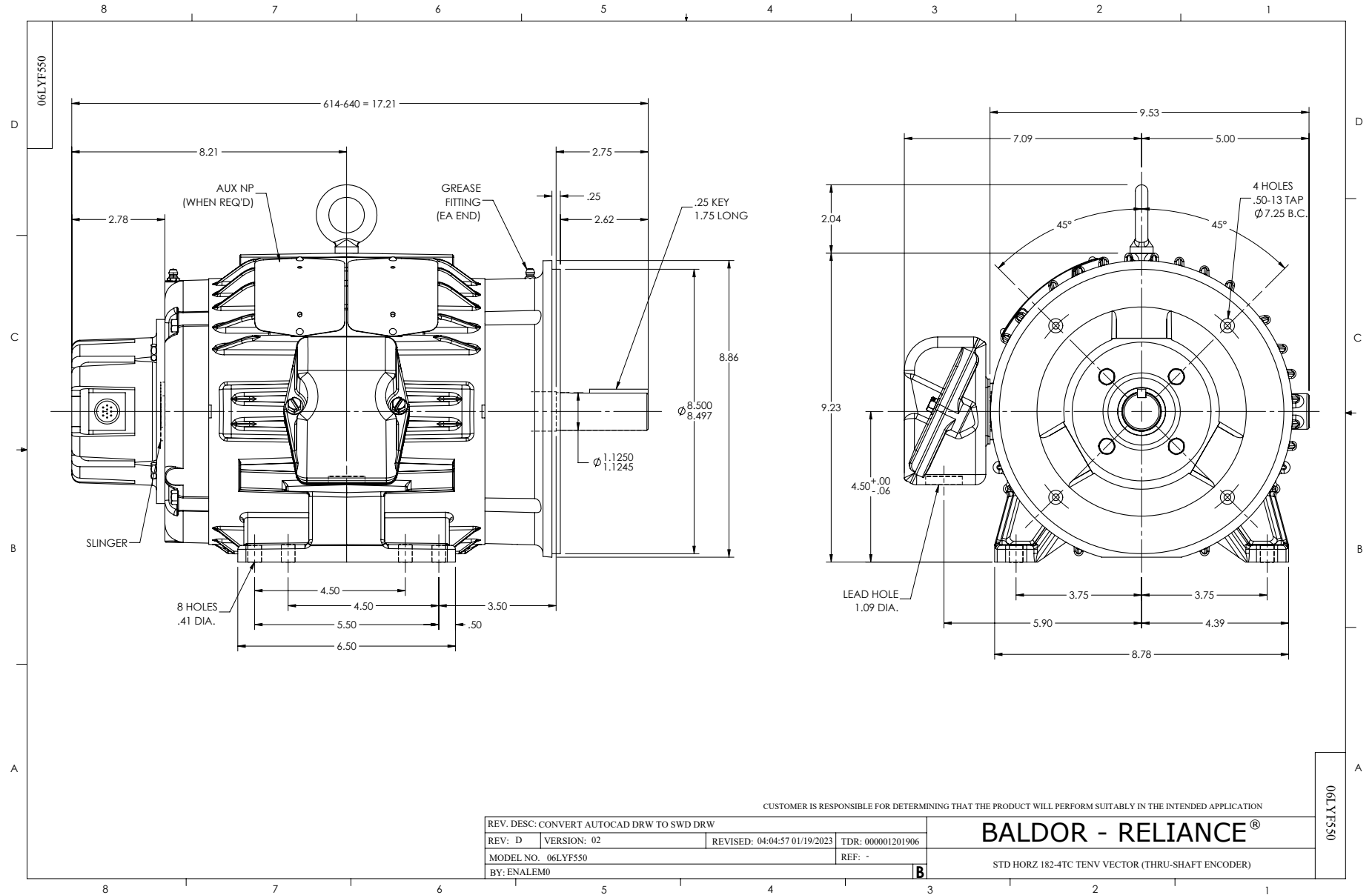
**BALDOR**  
A MEMBER OF THE ABB GROUP

DR BY ENR  
CK BY  
APP BY ENR  
DATE 2/27/2013

A-C MOTOR  
PERFORMANCE CURVES

06F550X388Z1

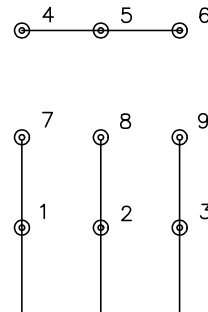
ISSUE DATE 2/27/2013



CD0005

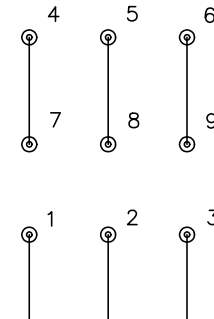


LOW VOLTAGE  
(2Y)



LINE

HIGH VOLTAGE  
(1Y)



LINE

NOTES:

1. INTERCHANGE ANY TWO LINE LEADS TO REVERSE ROTATION.
2. OPTIONAL THERMOSTATS ARE PROVIDED WHEN SPECIFIED.
3. ACTUAL NUMBER OF INTERNAL PARALLEL CIRCUITS MAY BE A MULTIPLE OF THOSE SHOWN ABOVE.
4. LEAD COLORS ARE OPTIONAL. LEADS MUST ALWAYS BE NUMBERED AS SHOWN.

CD0005

REV. DESC: REVISE TO SHOW OPTIONAL COLORS			
REV. LTR: E	BY: JLP	REVISED: 01/19/99 10:15	TDR: 0171435
S00000		FILE: AAA00005140	MDL: -
		MTL: -	

**BALDOR ELECTRIC Co.**

3PH, DV, 9 LEADS