

BALDOR® • RELIANCE™

Customer information packet

ZDM3768T

48M 6P TEBC HOR 215TC T'STATS VECTOR

Class - None

Division - Not Applicable

Copyright © All product information within this document is subject to ABB Motors and Mechanical Inc. copyright © protection, unless otherwise noted.

9/9/2024 6:33:17 AM

Specifications

Enclosure	TEBC
Frame	215TC
Frame Material	Iron
Frequency	60.00 Hz
Haz Area Class and Group	None
Haz Area Division	Not Applicable
Motor Letter Type	Three Phase
Output @ Frequency	5.000 HP @ 60 HZ
Phase	3
Synchronous Speed @ Frequency	1200 RPM @ 60 HZ
Voltage @ Frequency	230.0 V @ 60 HZ 460.0 V @ 60 HZ
Agency Approvals	UR CSA
Ambient Temperature	40 °C
Auxillary Box	No Auxillary Box
Auxillary Box Lead Termination	None
Base Indicator	Rigid
Bearing Grease Type	Polyrex EM (-20F +300F)
Blower	BLOWER
Current @ Voltage	14.600 A @ 230.0 V 7.300 A @ 460.0 V
Design Code	A
Drip Cover	No Drip Cover
Duty Rating	CONT
Efficiency @ 100% Load	90.2 %
Electrically Isolated Bearing	Not Electrically Isolated
Feedback Device	ENCODER
Front Shaft Indicator	None
Heater Indicator	No Heater
High Voltage Full Load Amps	7.3 a
Insulation Class	H

Part detail

Revision	D
Type	AC
Mech. spec.	07D515
Base	
Status	PRD/A
Elec. spec.	07WGX823
Layout	07LYD515
Eff. date	05-06-2024
CD Diagram	CD0005
Poles	06
Leads	9#14
Proprietary	False
Created date	03-12-2019

Inverter Code	Inverter Duty
KVA Code	K
Lifting Lugs	Standard Lifting Lugs
Locked Bearing Indicator	Locked Bearing
Max Speed	2000 rpm
Motor Lead Quantity/Wire Size	9 @ 14 AWG
Motor Lead Termination	Flying Leads
Motor Standards	NEMA
Motor Type	0748M
Mounting Arrangement	F1
Number of Poles	6
Overall Length	25.58 IN
Power Factor	72
Product Family	General Purpose
Pulley End Bearing Type	Ball
Pulley Face Code	C-Face
Pulley Shaft Indicator	Standard
Rodent Screen	None
RoHS Status	ROHS COMPLIANT
Service Factor	1.00
Shaft Diameter	1.375 IN
Shaft Ground Indicator	No Shaft Grounding
Shaft Rotation	Reversible: Connected Standard
Shaft Slinger Indicator	No Slinger
Speed	1160 rpm
Speed Code	Single Speed
Starting Method	Direct on line
Thermal Device - Bearing	None
Thermal Device - Winding	Normally Closed Thermostat
Vibration Sensor Indicator	No Vibration Sensor
Winding Thermal 1	None
Winding Thermal 2	None

Nameplate

NP1167L	
CAT NO	ZDM3768T
SPEC.	07D515X823Z1
FRAME	215TC HP 5 TE
VOLTS	230/460
MAG CUR	7.4/3.7 FLA 14.6/7.3
RPM	1160 RPM MAX 2000
HZ	60 PH 3 CLASS H
SER.F.	1.00 DES A SL HZ 2
NEMA-NOM-EFF	90.2 WK2 1.19
BLWR V	PH HZ A
RATING	40C AMB-CONT
DE BRG	6307 ODE BRG 6206
CC	010A SN

AC Induction Motor Performance Data

Record # 36499

Typical performance - not guaranteed values

Winding: 07WGX823-R016		Type: 0748M	Enclosure: TEBC	
Nameplate Data			460 V, 60 Hz: High Voltage Connection	
Rated Output (HP)	5	Full Load Torque	22.8 LB-FT	
Volts	230/460	Start Configuration	direct on line	
Full Load Amps	14.6/7.3	Breakdown Torque	77.4 LB-FT	
R.P.M.	1160	Pull-up Torque	46.7 LB-FT	
Hz	60 Phase	Locked-rotor Torque	56.1 LB-FT	
NEMA Design Code	A KVA Code	Starting Current	51.9 A	
Service Factor (S.F.)	1	No-load Current	3.7 A	
NEMA Nom. Eff.	90.2 Power Factor	Line-line Res. @ 25°C	1.59 Ω	
Rating - Duty	40C AMB-CONT	Temp. Rise @ Rated Load	50°C	
S.F. Amps		Temp. Rise @ S.F. Load	61°C	
		Locked-rotor Power Factor	22	
		Rotor inertia	1.19 LB-FT ²	

Load Characteristics 460 V, 60 Hz, 5 HP

% of Rated Load	25	50	75	100	125	150
Power Factor	34	54	65	72	75	77
Efficiency	85.8	90.1	90.8	90.3	89.1	87.6
Speed	1190	1181	1173	1163	1151	1138
Line amperes	4.01	4.79	5.88	7.29	8.77	10.4

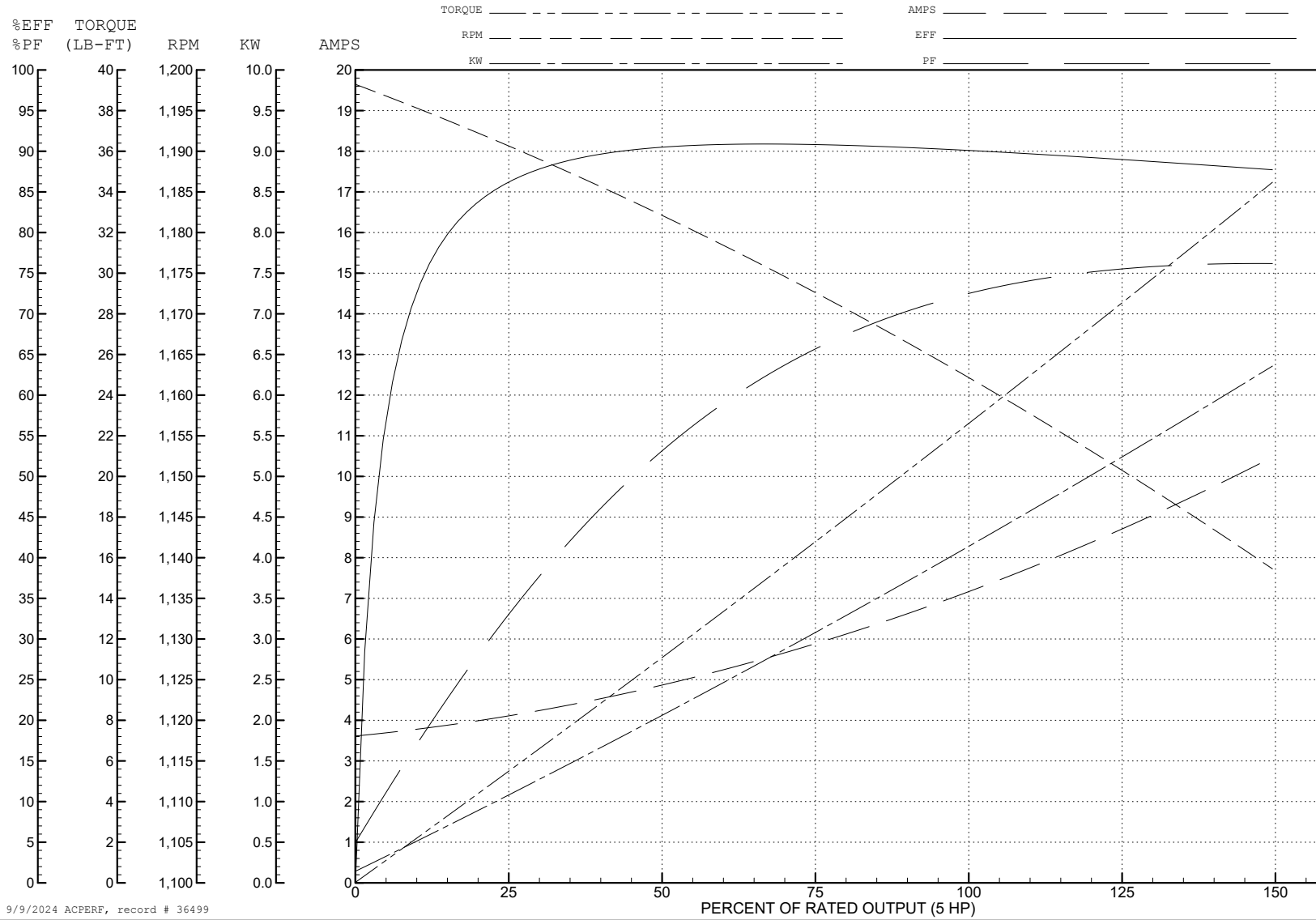
ABB Motors and Mechanical Inc.

WINDING # 07WGX823

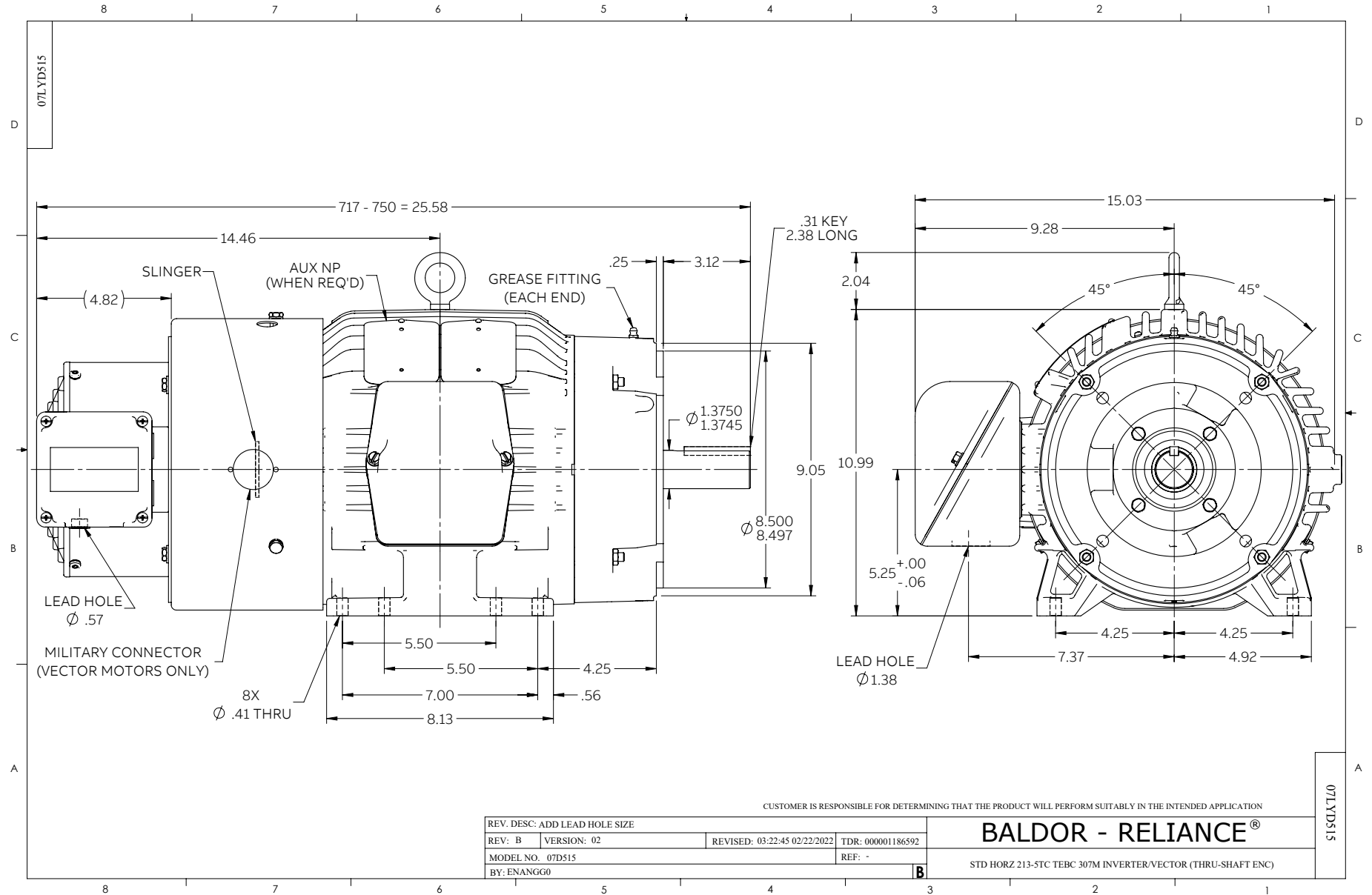
5 HP 3 PH 60 HZ 1160 RPM 460 V 0748M

Typical performance - not guaranteed values.

TORQUES (LB-FT): PO=77.4 PU=46.7 LR=56.1 LRA=51.9



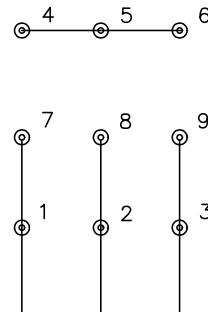
9/9/2024 ACPERF, record # 36499



CD0005



LOW VOLTAGE
(2Y)



LINE

HIGH VOLTAGE
(1Y)



LINE

NOTES:

1. INTERCHANGE ANY TWO LINE LEADS TO REVERSE ROTATION.
2. OPTIONAL THERMOSTATS ARE PROVIDED WHEN SPECIFIED.
3. ACTUAL NUMBER OF INTERNAL PARALLEL CIRCUITS MAY BE A MULTIPLE OF THOSE SHOWN ABOVE.
4. LEAD COLORS ARE OPTIONAL. LEADS MUST ALWAYS BE NUMBERED AS SHOWN.

CD0005

REV. DESC: REVISE TO SHOW OPTIONAL COLORS			
REV. LTR: E	BY: JLP	REVISED: 01/19/99 10:15	TDR: 0171435
S00000		FILE: AAA00005140	MDL: -
		MTL: -	

BALDOR ELECTRIC Co.

3PH, DV, 9 LEADS