

BALDOR • RELIANCE

Customer information packet

ZDM2332T

60M 6P TEBC HOR 256TC T'STATS VECTOR

Class - None

Division - Not Applicable

Specifications

Enclosure	TEBC
Frame	256TC
Frame Material	Iron
Frequency	60.00 Hz
Haz Area Class and Group	None
Haz Area Division	Not Applicable
Motor Letter Type	Three Phase
Output @ Frequency	10.000 HP @ 60 HZ
Phase	3
Synchronous Speed @ Frequency	1200 RPM @ 60 HZ
Voltage @ Frequency	230.0 V @ 60 HZ 460.0 V @ 60 HZ
Agency Approvals	CSA UR
Ambient Temperature	40 °C
Auxillary Box	No Auxillary Box
Auxillary Box Lead Termination	None
Base Indicator	Rigid
Bearing Grease Type	Polyrex EM (-20F +300F)
Blower	BLOWER
Current @ Voltage	14.200 A @ 460.0 V 28.400 A @ 230.0 V 30.000 A @ 208.0 V
Design Code	A
Drip Cover	No Drip Cover
Duty Rating	CONT
Efficiency @ 100% Load	91.0 %
Electrically Isolated Bearing	Not Electrically Isolated
Feedback Device	ENCODER
Front Shaft Indicator	None
Heater Indicator	No Heater
High Voltage Full Load Amps	14.2 a

Part detail

Revision	F
Type	AC
Mech. spec.	09T110
Base	
Status	PRD/A
Elec. spec.	09WGX826
Layout	09LYT110
Eff. date	11-14-2023
CD Diagram	CD0180
Poles	06
Leads	9#12
Proprietary	False
Created date	03-13-2019

Insulation Class	H
Inverter Code	Inverter Duty
KVA Code	J
Lifting Lugs	Standard Lifting Lugs
Locked Bearing Indicator	Locked Bearing
Max Speed	5000 rpm
Motor Lead Quantity/Wire Size	9 @ 12 AWG
Motor Lead Termination	Flying Leads
Motor Standards	NEMA
Motor Type	0960M
Mounting Arrangement	F1
Number of Poles	6
Overall Length	29.41 IN
Power Factor	72
Product Family	General Purpose
Pulley End Bearing Type	Ball
Pulley Face Code	C-Face
Pulley Shaft Indicator	Standard
Rodent Screen	None
RoHS Status	ROHS COMPLIANT
Service Factor	1.00
Shaft Diameter	1.625 IN
Shaft Ground Indicator	No Shaft Grounding
Shaft Rotation	Reversible
Shaft Slinger Indicator	Shaft Slinger
Speed	1180 rpm
Speed Code	Single Speed
Starting Method	Direct on line
Thermal Device - Bearing	None
Thermal Device - Winding	Normally Closed Thermostat
Vibration Sensor Indicator	No Vibration Sensor
Winding Thermal 1	None
Winding Thermal 2	None

Nameplate

NP1168L				
CAT NO	ZDM2332T			
SPEC.	09T110X826Z1			
FRAME	256TC	HP	10 TE	
VOLTS	230/460			
MAG CUR	14.4/7.2	FLA	28.4/14.2	
RPM	1180	RPM MAX	5000	
HZ	60	PH	3	CLASS H
SER.F.	1.00	DES	A	SL HZ 0.95
NEMA-NOM-EFF	91	WK2	4.82	
BLWR V	PH	HZ	A	
RATING	40C AMB-CONT			
DE BRG	6309	ODE BRG	6208	
CC	010A	SER.NO		

AC Induction Motor Performance Data

Record # 76883

Typical performance - not guaranteed values

Winding: 09WGX826-R003		Type: 0960M	Enclosure: TEBC	
Nameplate Data			460 V, 60 Hz: High Voltage Connection	
Rated Output (HP)	10	Full Load Torque	44.4 LB-FT	
Volts	230/460	Start Configuration	direct on line	
Full Load Amps	28.4/14.2	Breakdown Torque	144 LB-FT	
R.P.M.	1180	Pull-up Torque	54.6 LB-FT	
Hz	60 Phase	3	Locked-rotor Torque	75 LB-FT
NEMA Design Code	A KVA Code	J	Starting Current	93 A
Service Factor (S.F.)		1	No-load Current	7.15 A
NEMA Nom. Eff.	91 Power Factor	72	Line-line Res. @ 25°C	0.675 Ω
Rating - Duty	40C AMB-CONT		Temp. Rise @ Rated Load	44°C
S.F. Amps			Temp. Rise @ S.F. Load	52°C
			Locked-rotor Power Factor	24.9
			Rotor inertia	4.82 LB-FT ²

Load Characteristics 460 V, 60 Hz, 10 HP

% of Rated Load	25	50	75	100	125	150
Power Factor	35	56	66	72	74	75
Efficiency	84.4	90.2	91.6	91.7	91.2	90.3
Speed	1196	1191	1186	1181	1175	1168
Line amperes	8	9.39	11.57	14.2	17.24	20.55

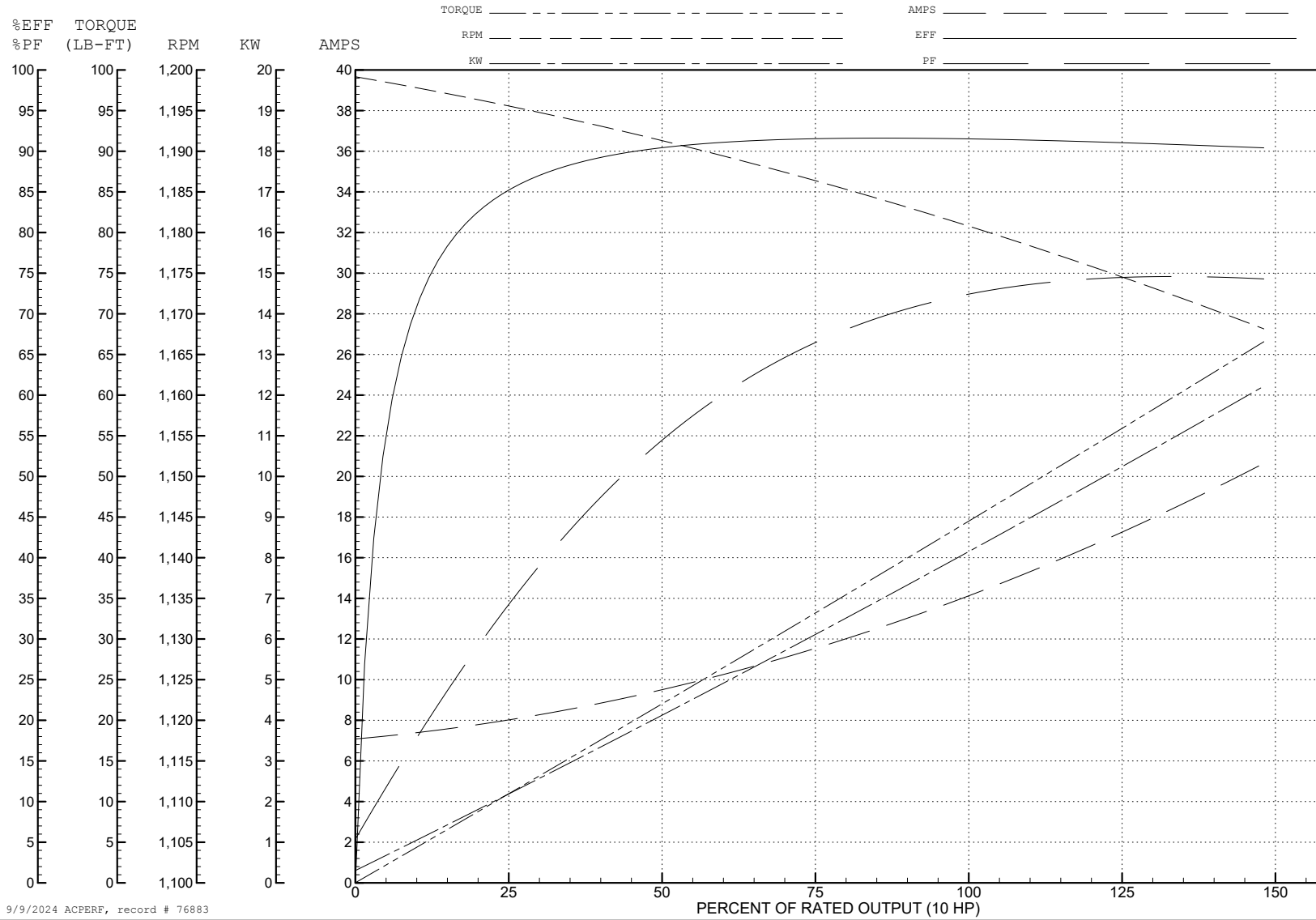
ABB Motors and Mechanical Inc.

WINDING # 09WGX826

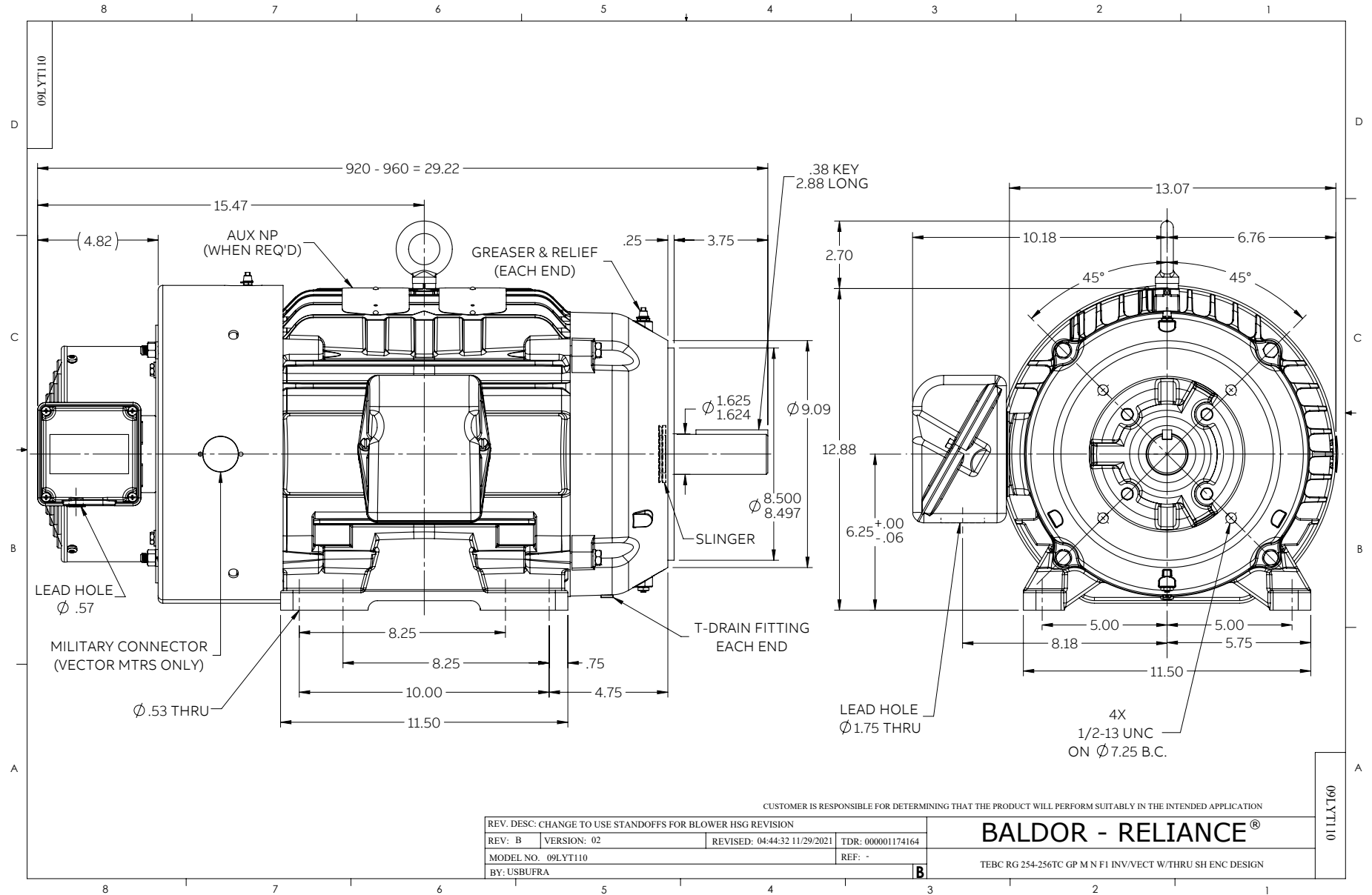
Typical performance - not guaranteed values.

10 HP 3 PH 60 HZ 1180 RPM 460 V 0960M

TORQUES (LB-FT): PO=144 PU=54.6 LR=75 LRA=93



9/9/2024 ACPERF, record # 76883



CD0180



LOW VOLTAGE
(2D)



HIGH VOLTAGE
(1D)



NOTES:

1. INTERCHANGE ANY TWO LINE LEADS TO REVERSE ROTATION.
2. OPTIONAL THERMOSTATS ARE PROVIDED WHEN SPECIFIED.
3. ACTUAL NUMBER OF INTERNAL PARALLEL CIRCUITS MAY BE A MULTIPLE OF THOSE SHOWN ABOVE.
4. LEAD COLORS ARE OPTIONAL. LEADS MUST ALWAYS BE NUMBERED AS SHOWN.

CD0180

REV. DESC: ADD CLASS CONN00000007		
REV. LTR: D	VERSION: 01	TDR: 000001099922
FILE: \AAA\00005\148	REVISED: 10: 25: 29 02/19/2019	BY: ENBRIRO
MTL: -	© □	

BALDOR - RELIANCE®

3PH, DV, 9 LEADS, DELTA CONNECTION

SH 1 of 1