

RPM-AC FINNED FRAME VARIABLE SPEED ALTERNATING CURRENT MOTOR (U)FL2898Z

ENCLOSURE: TOTALLY ENCLOSED

MOUNTING: FOOT

DRIVE METHOD: COUPLED OR BELTED

COOLING: BLOWER COOLED
AIR-OVER PIGGYBACK

ACCESSORIES: ENCODER MS CONN

617532-379

D

C

B

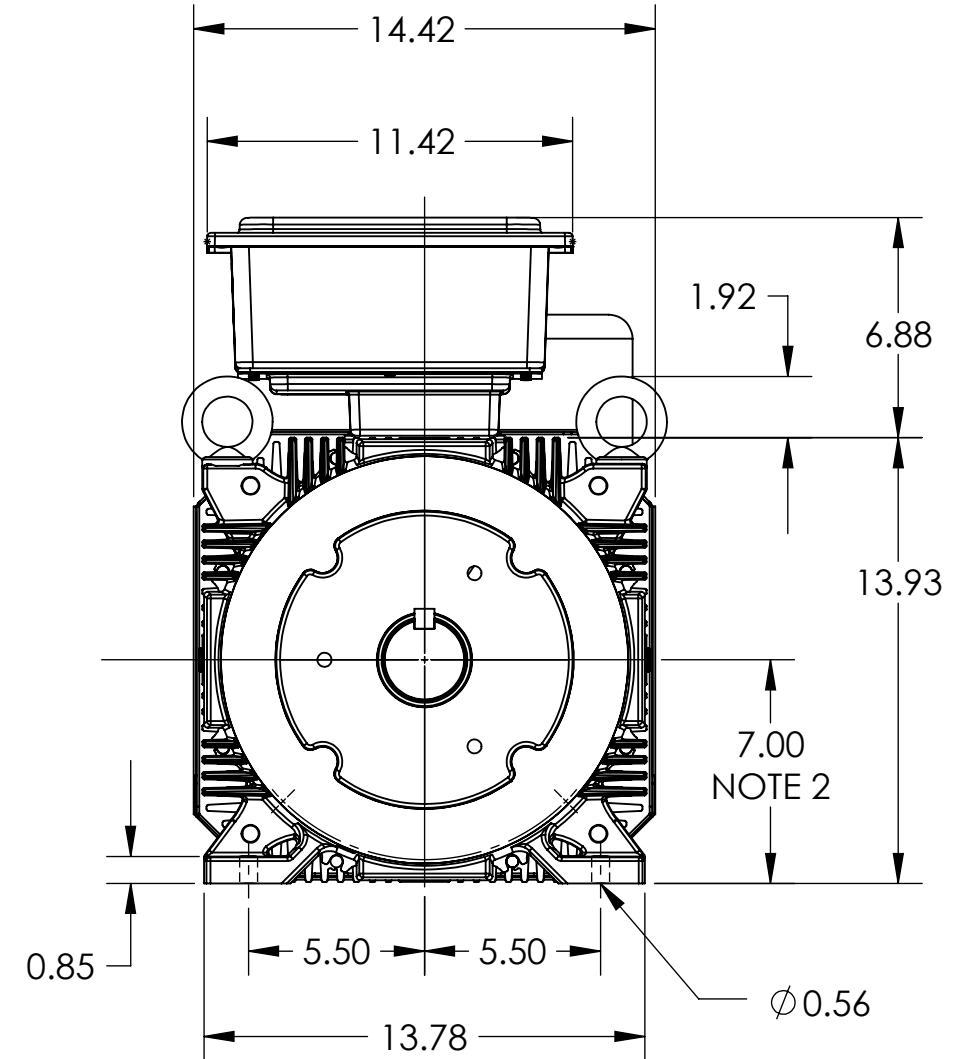
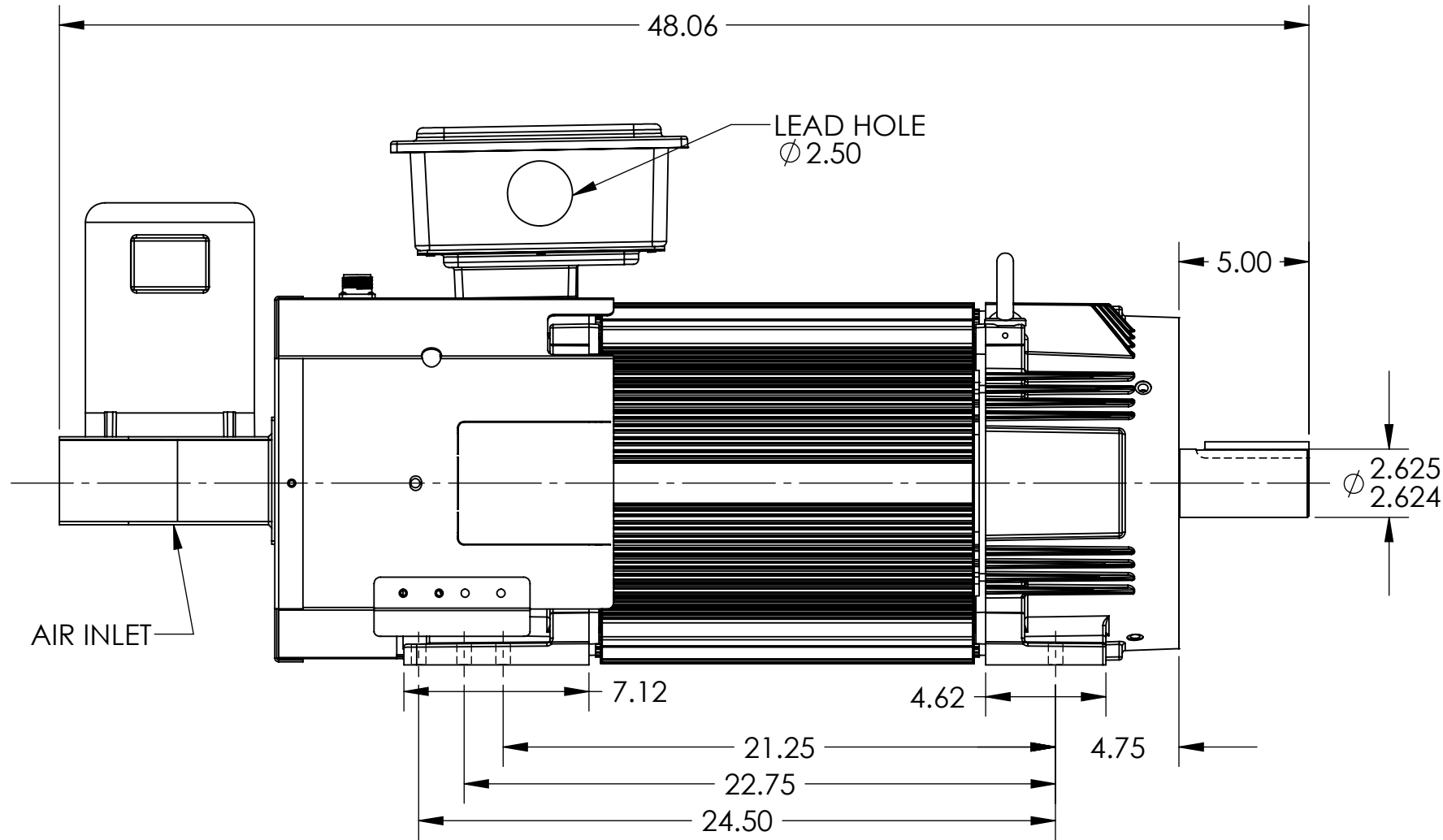
A

D

C

B

A



NOTE 1: TACHOMETER MOUNTING.
1/2-13, 4 HOLES EQ. SPACED ON A Ø 7.25 B.C.
FACE RUNOUT AND ECCENTRICITY 0.004 MAX. T.I.R.

NOTE 2: SHAFT HEIGHT WILL NOT BE EXCEEDED.
SHIMS UP TO 0.03 INCHES IN THICKNESS ARE USUALLY
REQUIRED FOR COUPLED OR GEARED MACHINES.

235 AMP MILL TERMINAL BOX SHOWN
ROTATABLE IN 90° INCREMENTS

DIMENSIONS ARE IN INCHES
MOTOR WEIGHT: 915 LBS. (MAY VARY 15%)

CUSTOMER IS RESPONSIBLE FOR DETERMINING THAT THE PRODUCT WILL PERFORM SUITABLY IN THE INTENDED APPLICATION

REV. DESC: CONVERT TO SW			
REV: A	VERSION: 01	REVISED: 03:57:50 01/21/2026	TDR: 000001248597
MODEL NO. 617532-379		REF: -	
BY: USRIMCC			B

BALDOR - RELIANCE®

DIM SHT,FL2898Z,TEBC,ENCODER,RMM BLWR,F3 MILL,2.625 X 5.00

617532-379