

RPMAC FINNED FRAME VARIABLE SPEED ALTERNATING CURRENT MOTOR
FL2578Z

ENCLOSURE: TOTALLY ENCLOSED

MOUNTING: FOOT

DRIVE METHOD: COUPLED OR BELTED

COOLING: BLOWER-COOLED

ACCESSORIES: ENCODER

D

D

C

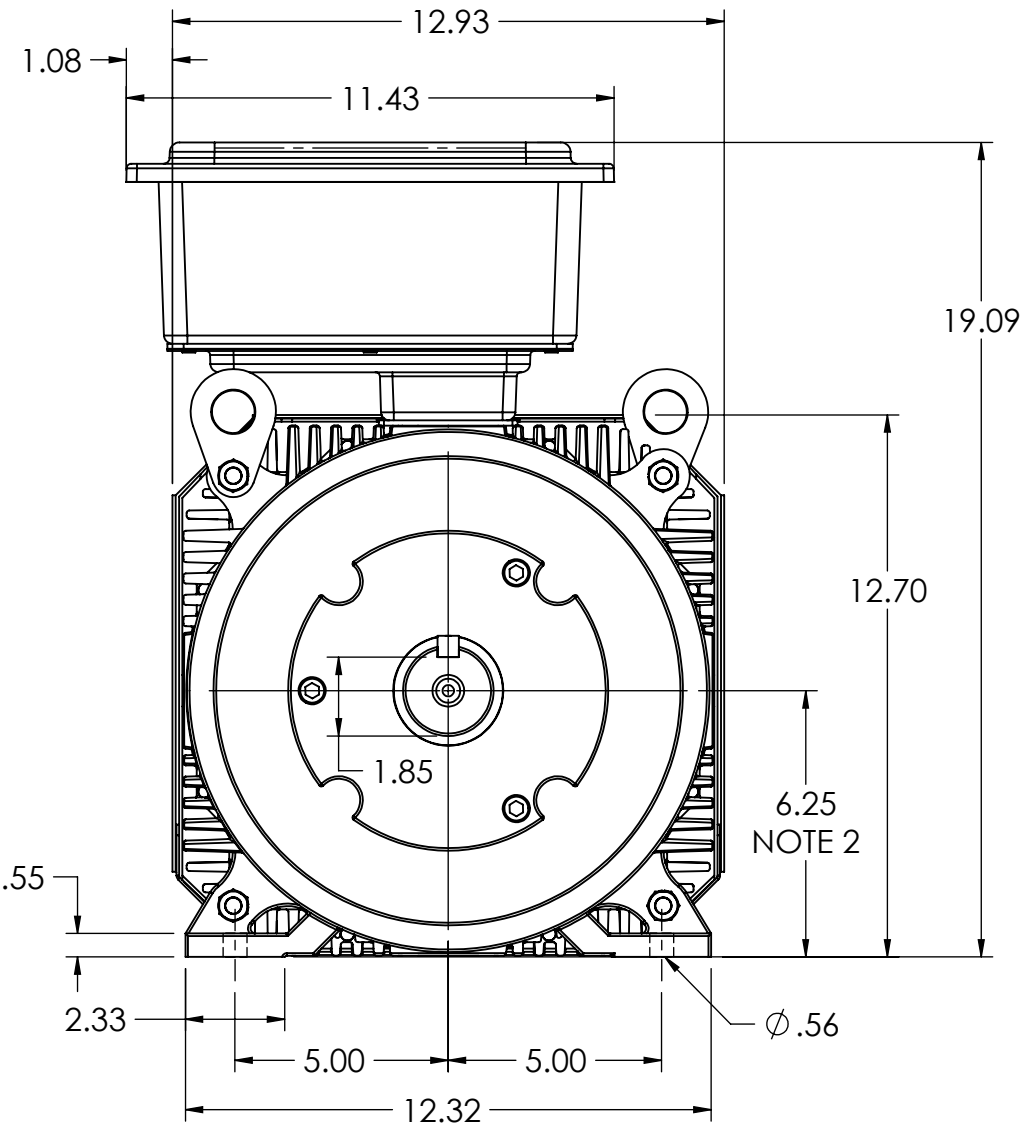
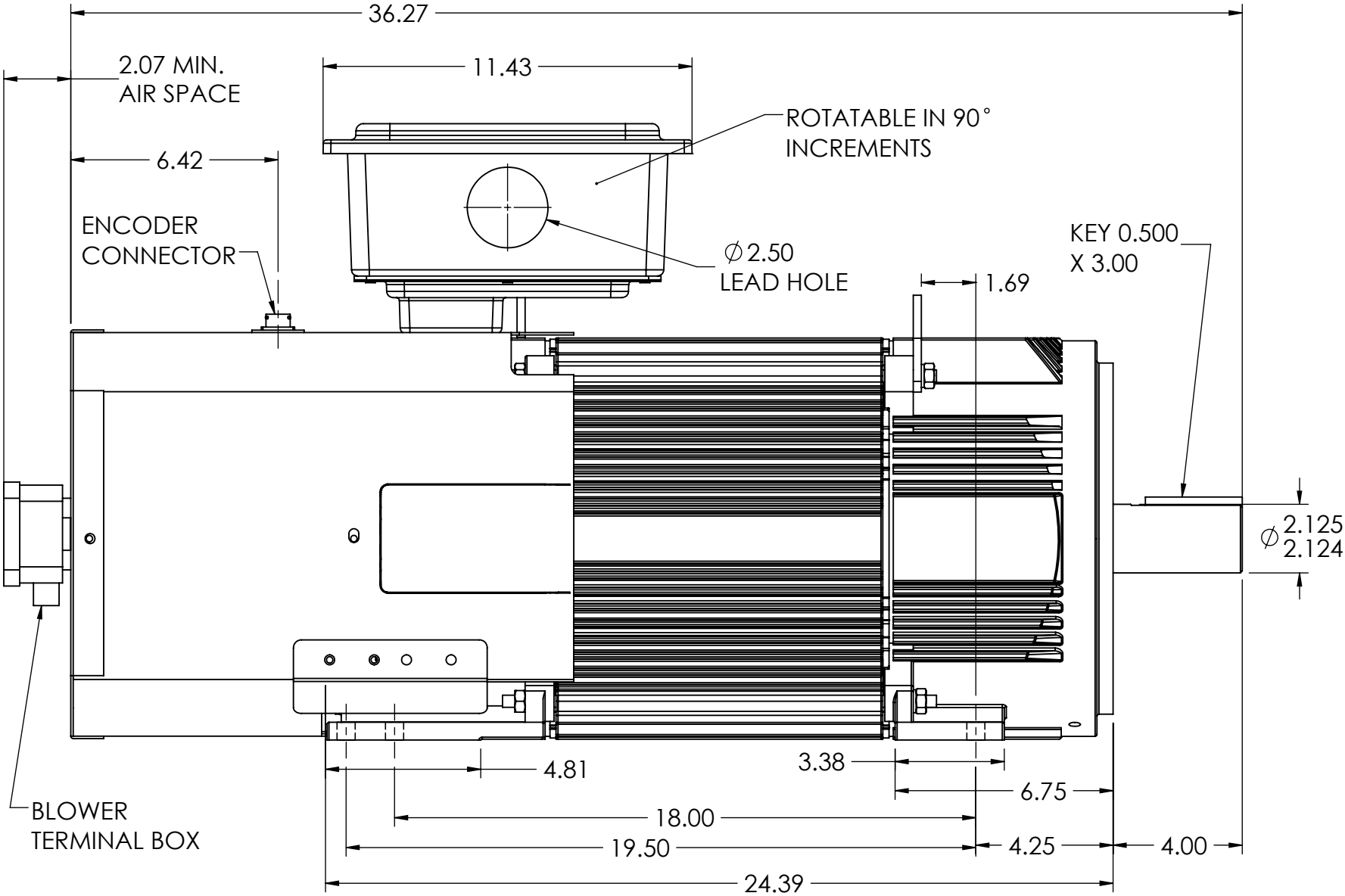
C

B

B

A

A



NOTE 1 C-FACE & TACHOMETER MOUNTING
1/2-13 TAP 1.00 DEEP, ON A 7.25 DIA. BOLT CIRCLE
FACE RUNOUT AND ECCENTRICITY .004 MAX T.I.R.

NOTE 2 SHAFT HEIGHT WILL NOT BE EXCEEDED.
SHIMS UP TO .03 INCHES IN THICKNESS ARE USUALLY
REQUIRED FOR COUPLED OR GEARED MACHINES.

NOTE 3 MAXIMUM PERMISSIBLE SHAFT RUNOUT WHEN MEASURED
AT END OF STD. SHAFT EXTENSION IS .002 T.I.R. UP TO AND
INCLUDING 1.625 DIA. AND .003 T.I.R. 1.625 TO 5 INCH DIA.

235 AMP MILL TERMINAL BOX SHOWN
MOTOR WEIGHT 540 LBS. (MAY VARY 15%)
DIMENSIONS ARE IN INCHES SCALE 1.00

CUSTOMER IS RESPONSIBLE FOR DETERMINING THAT BALDOR'S PRODUCT WILL PERFORM SUITABLY IN THE INTENDED APPLICATION.

REV. DESC: REDRAW IN SOLIDWORKS			
REV: A	VERSION: 01	REVISED: 03:42:30 01/25/2023	TDR: 000001202997
MODEL NO. 617577-375			
BY: USANBRO28		B	

BALDOR - RELIANCE®

DIM SHT,RPMAC,TEBC,FL2578Z,ENCODER,F3 MILL BOX

617577-375