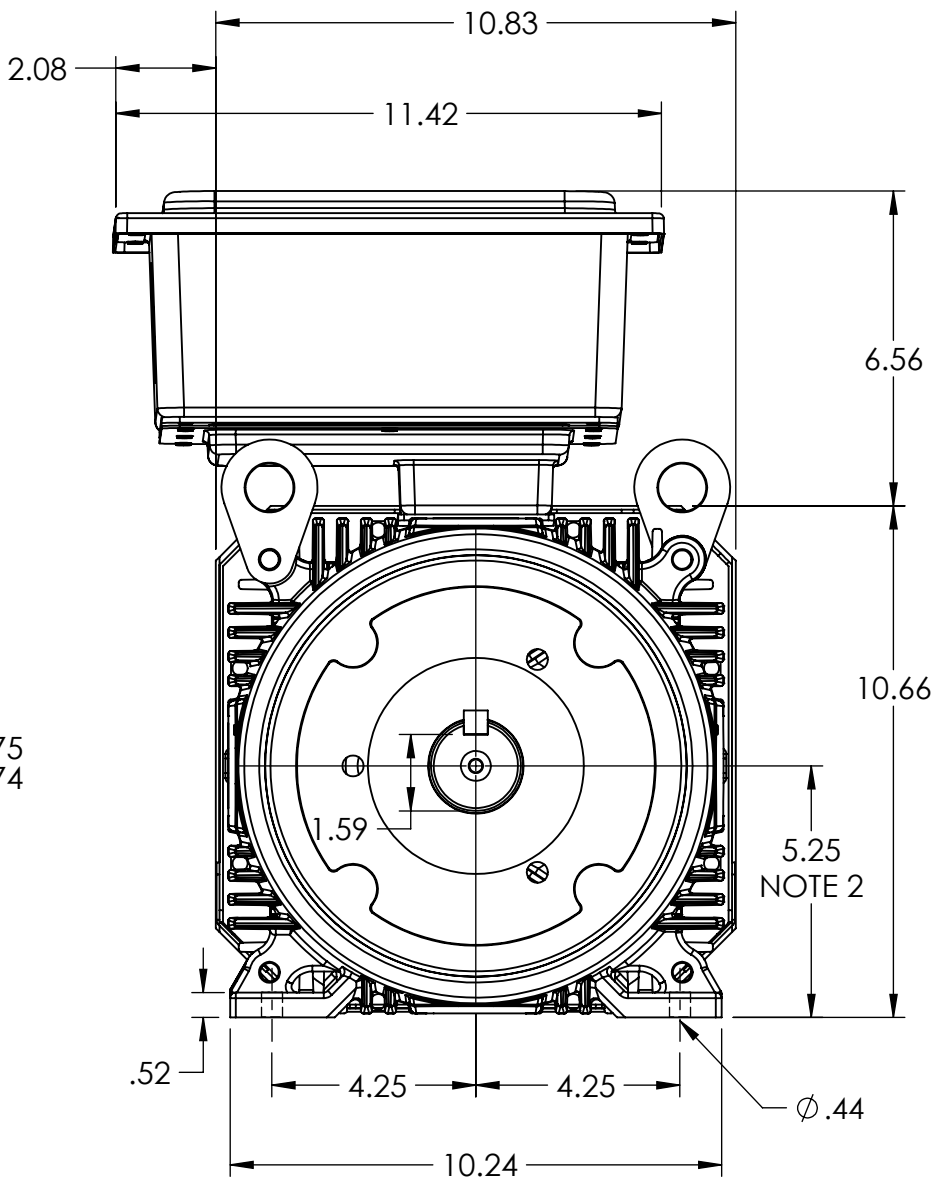
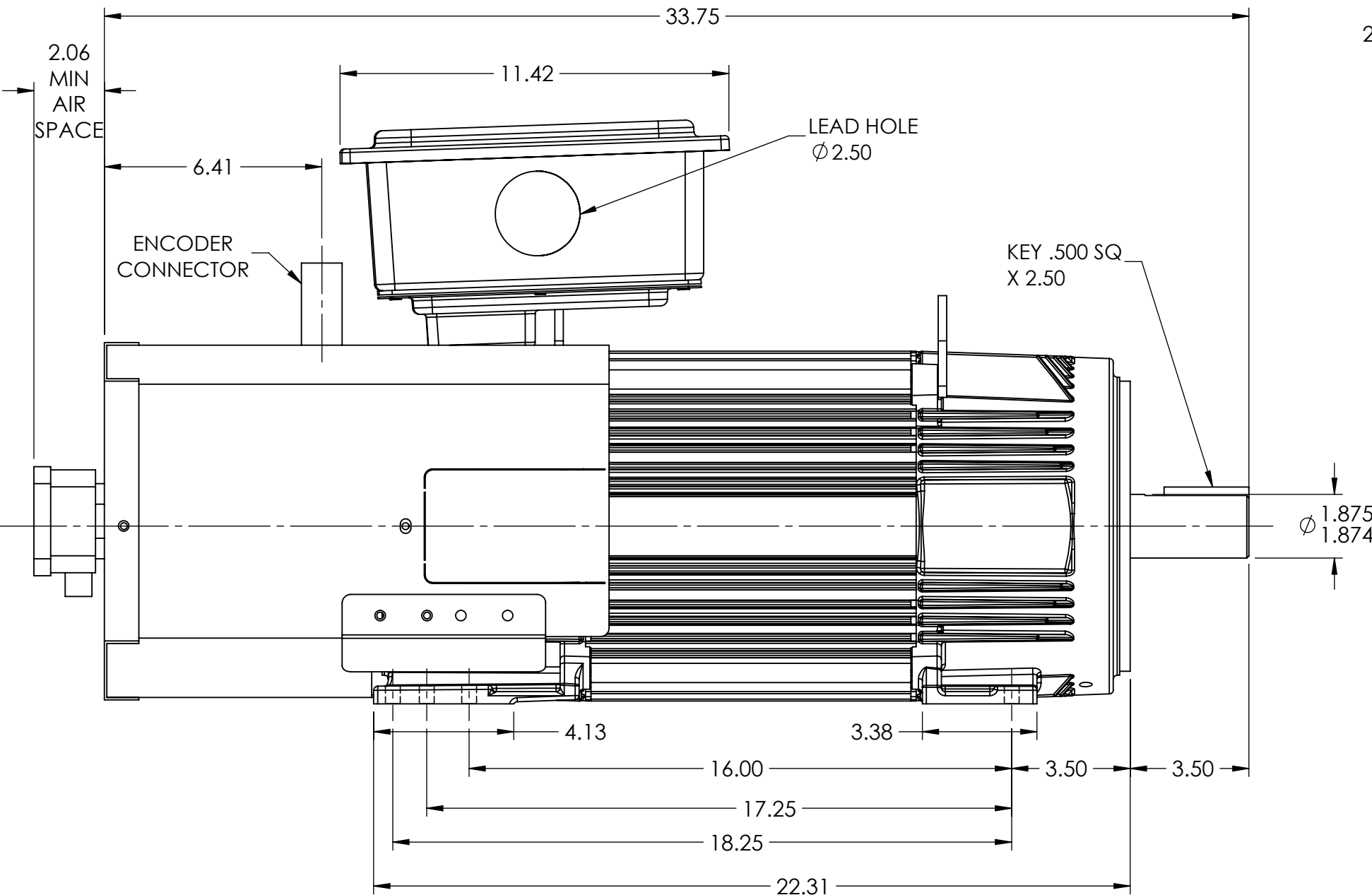


RPM-AC FINNED FRAME VARIABLE SPEED ALTERNATING
CURRENT MOTOR
FL2173Z

COOLING: BLOWER COOLED
ACCESSORIES: ENCODER

ENCLOSURE: TOTALLY ENCLOSED
MOUNTING: FOOT
DRIVE METHOD: COUPLED OR BELTED



DIMENSIONS ARE IN INCHES SCALE: 1.00

MOTOR WEIGHT: 290 LBS. (MAY VARY 15%)

235 AMP TERMINAL BOX SHOWN
ROTATABLE IN 90° INCREMENTS

NOTE 1 O.D.E. C-FACE & TACHOMETER MOUNTING
1/2-13 TAP, .88 IN. DEEP, ON A Ø7.25 IN. BOLT CIRCLE
FACE RUNOUT AND ECCENTRICITY .004 MAX T.I.R.

NOTE 2 SHAFT HEIGHT WILL NOT BE EXCEEDED.
SHIMS UP TO 0.03 INCHES THICKNESS ARE USUALLY
REQUIRED FOR COUPLED OR GEARED MACHINES.

CUSTOMER IS RESPONSIBLE FOR DETERMINING THAT THE PRODUCT WILL PERFORM SUITABLY IN THE INTENDED APPLICATION

REV. DESC: UPDATE NOTE 2			
REV: B	VERSION: 02	REVISED: 09:02:34 03/24/2023	TDR: 000001206434
MODEL NO. 617525-359			REF: -
BY: USWATUR			B

BALDOR - RELIANCE®

DIM SHT,RPMAC,TEBC,FL2173Z,ENCODER,F3 MILL BOX

617525-359

617525-359