

# ABB BALDOR RELIANCE III

---

## Customer information packet

YPC144A

.25HP, 1625RPM, 1PH, 60HZ, 48YZ, 3408C, TEAO, F

Class - None

Division - Not Applicable

**Specifications**

<b>Enclosure</b>	TEAO
<b>Frame</b>	48YZ
<b>Frame Material</b>	Steel
<b>Frequency</b>	60.00 Hz
<b>Haz Area Class and Group</b>	None
<b>Haz Area Division</b>	Not Applicable
<b>Motor Letter Type</b>	Oil Capacitor Start and Run
<b>Output @ Frequency</b>	.250 HP @ 60 HZ
<b>Phase</b>	1
<b>Synchronous Speed @ Frequency</b>	1800 RPM @ 60 HZ
<b>Voltage @ Frequency</b>	115.0 V @ 60 HZ
<b>Agency Approvals</b>	CSA UR
<b>Ambient Temperature</b>	40 °C
<b>Auxiliary Box</b>	NO AUXILLARY BOX
<b>Auxiliary Box Lead Termination</b>	None
<b>Base Indicator</b>	Yoke Pedestal
<b>Bearing Grease Type</b>	Polyrex EM (-20F +300F)
<b>Blower</b>	None
<b>Current @ Voltage</b>	2.500 A @ 115.0 V
<b>Drip Cover</b>	No Drip Cover
<b>Duty Rating</b>	CONT
<b>Efficiency @ 100% Load</b>	67.0 %
<b>Electrically Isolated Bearing</b>	Not Electrically Isolated
<b>Feedback Device</b>	NO FEEDBACK
<b>Front Face Code</b>	Terminal Panel
<b>Front Shaft Indicator</b>	None
<b>Heater Indicator</b>	No Heater
<b>High Voltage Full Load Amps</b>	2.5 a
<b>Insulation Class</b>	B
<b>Inverter Code</b>	Not Inverter
<b>KVA Code</b>	-

**Part Detail**

<b>Revision</b>	H
<b>Type</b>	AC
<b>Mech. spec.</b>	34M195
<b>Base</b>	
<b>Status</b>	PRD/A
<b>Elec. spec.</b>	34WGR234
<b>Layout</b>	34LYM195
<b>Eff. date</b>	10-28-2024
<b>CD Diagram</b>	CD0798
<b>Poles</b>	04
<b>Leads</b>	5#18
<b>Proprietary</b>	False
<b>Created date</b>	10-17-2014

<b>Lifting Lugs</b>	No Lifting Lugs
<b>Locked Bearing Indicator</b>	No Locked Bearing
<b>Motor Lead Exit</b>	Terminal Panel Or Lead Hole
<b>Motor Lead Quantity/Wire Size</b>	5 @ 18 AWG
<b>Motor Lead Termination</b>	None
<b>Motor Standards</b>	NEMA
<b>Motor Type</b>	3408C
<b>Mounting Arrangement</b>	F1
<b>Number of Poles</b>	4
<b>Overall Length</b>	10.68 IN
<b>Power Factor</b>	98
<b>Product Family</b>	General Purpose
<b>Pulley End Bearing Type</b>	Ball
<b>Pulley Face Code</b>	Standard
<b>Pulley Shaft Indicator</b>	Standard
<b>Rodent Screen</b>	None
<b>RoHS Status</b>	ROHS COMPLIANT
<b>Service Factor</b>	1.00
<b>Shaft Diameter</b>	0.500 IN
<b>Shaft Extension Location</b>	Pulley End
<b>Shaft Ground Indicator</b>	No Shaft Grounding
<b>Shaft Rotation</b>	Reversible: Connected Standard
<b>Shaft Slinger Indicator</b>	Shaft Slinger
<b>Speed</b>	1625 rpm
<b>Speed Code</b>	Single Speed
<b>Starting Method</b>	Direct on line
<b>Thermal Device - Bearing</b>	None
<b>Thermal Device - Winding</b>	None
<b>Vibration Sensor Indicator</b>	No Vibration Sensor
<b>Winding Thermal 1</b>	Automatic Thermal Overload
<b>Winding Thermal 1 Location</b>	WG

**Nameplate**

<b>NP1257L</b>	
<b>CAT.NO.</b>	YPC144A
<b>SPEC.</b>	34M195R234G1
<b>HP</b>	.25
<b>VOLTS</b>	115
<b>AMP</b>	2.5
<b>RPM</b>	1625
<b>FRAME</b>	48YZ <b>HZ</b> 60 <b>PH</b> 1
<b>SER.F.</b>	1.00 <b>CODE</b> - <b>DES</b> - <b>CL</b> B
<b>NEMA-NOM-EFF</b>	67 <b>PF</b> 98
<b>RATING</b>	40C AMB-CONT
<b>CC</b>	
<b>DE</b>	6203 <b>ODE</b> 6203
<b>ENCL</b>	TEAO <b>SN</b>

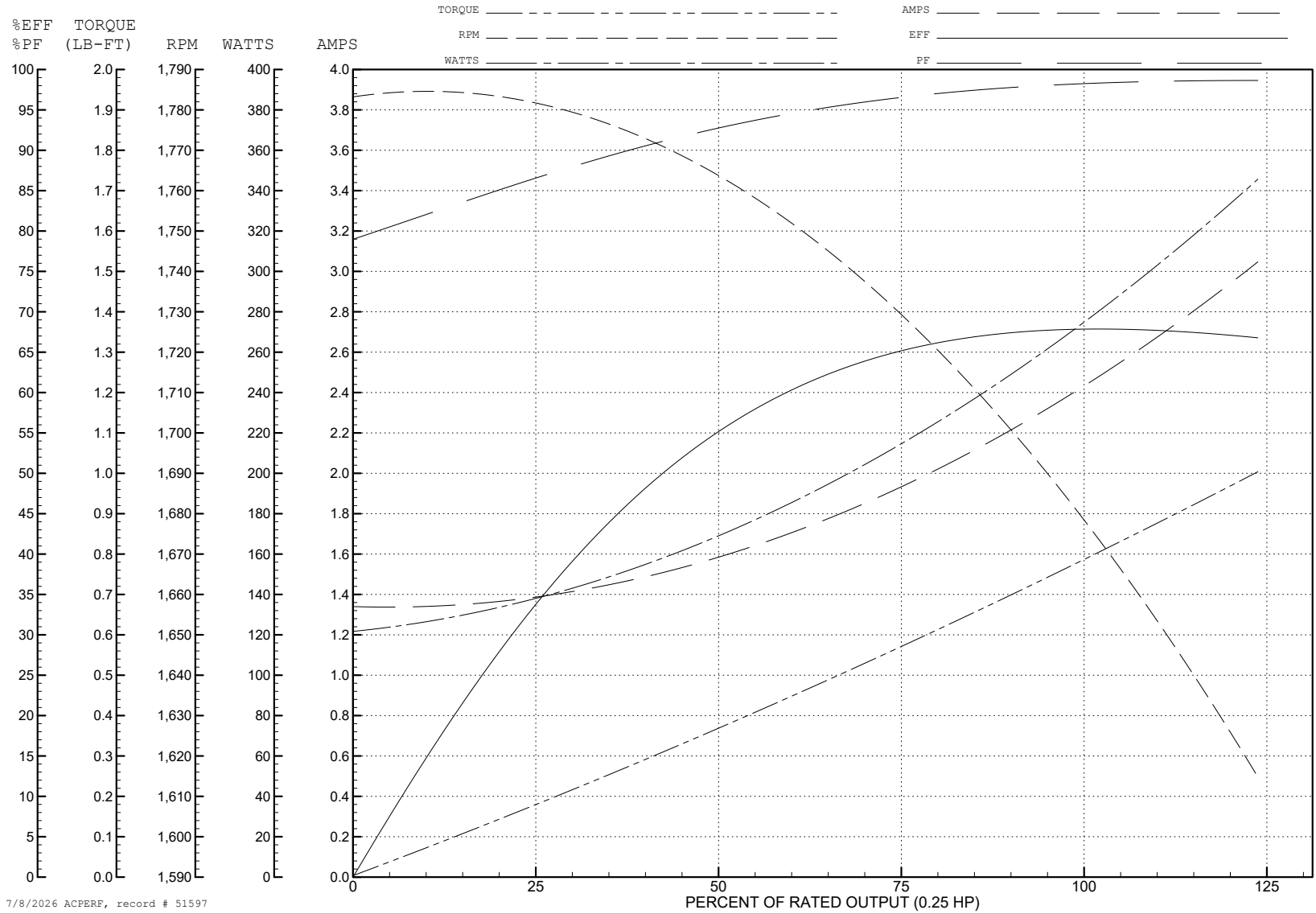
ABB Motors and Mechanical Inc.

WINDING # 34WGR234

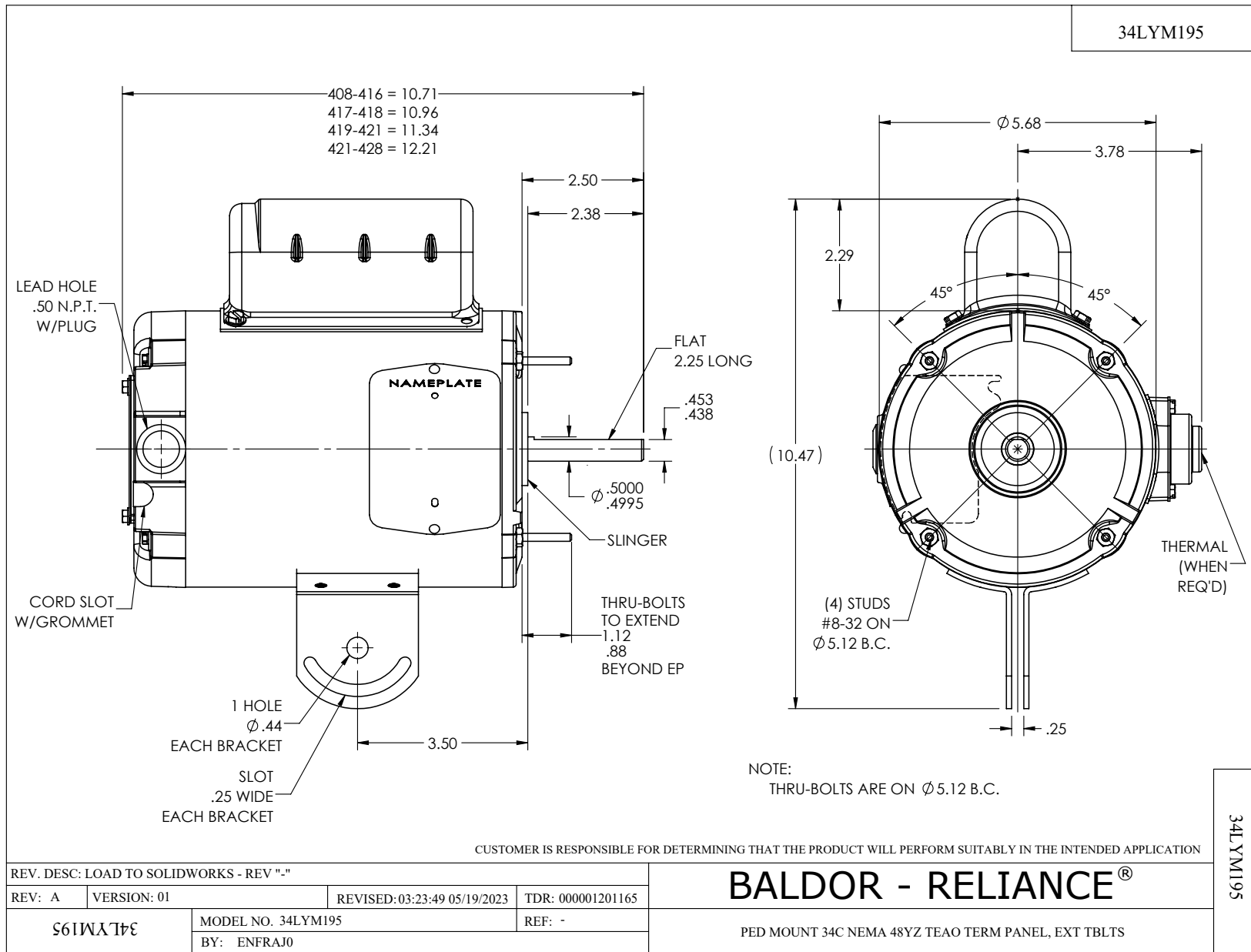
Typical performance - not guaranteed values.

0.25 HP 1 PH 60 HZ 1625 RPM 115 V 3408C

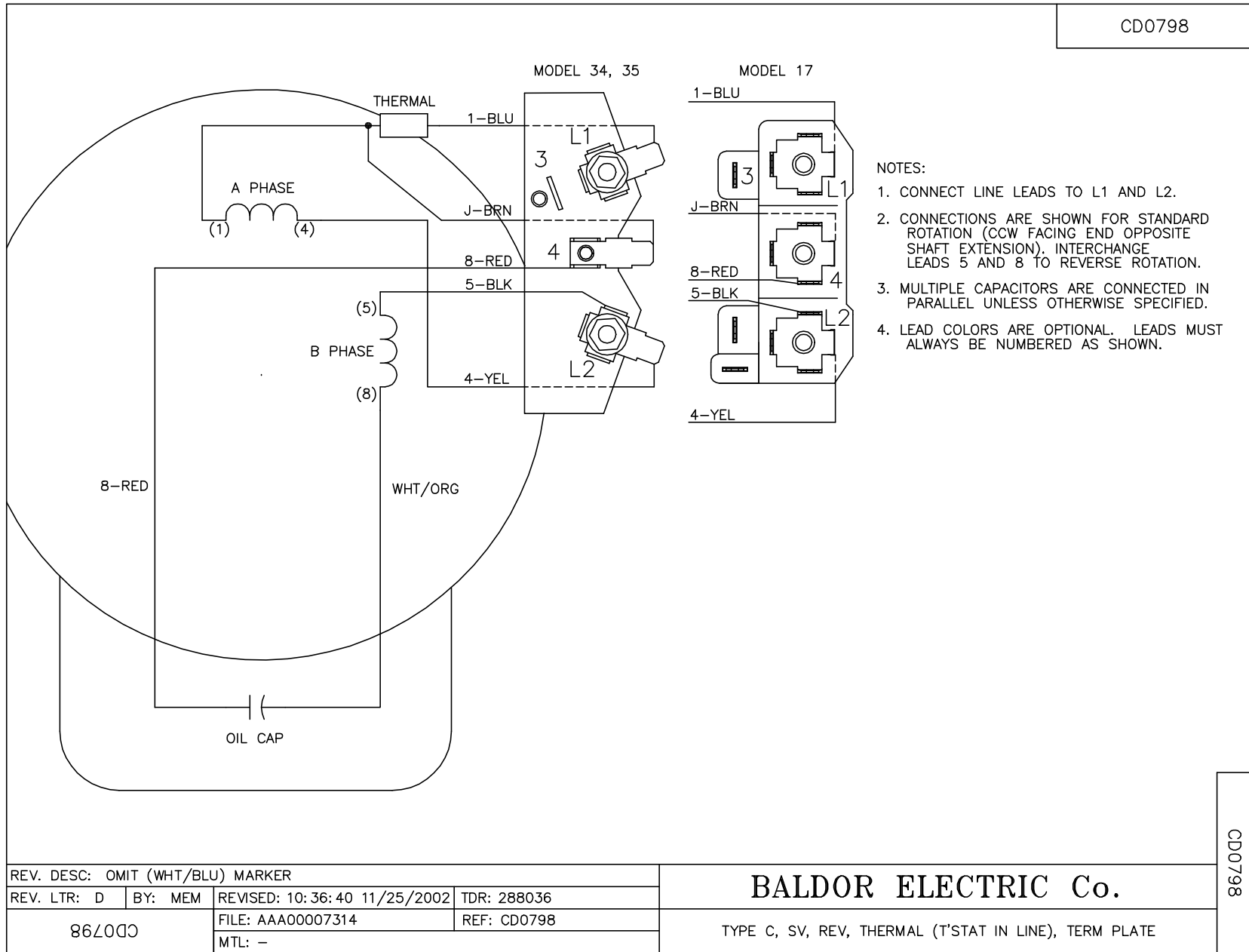
TORQUES (LB-FT): PO=1.13 PU=0.321 LR=0.42 LRA=6.76



7/8/2026 ACPERF, record # 51597



CD0798



REV. DESC: OMIT (WHT/BLU) MARKER			
REV. LTR: D	BY: MEM	REVISED: 10:36:40 11/25/2002	TDR: 288036
867000		FILE: AAA00007314	REF: CD0798
		MTL: -	

**BALDOR ELECTRIC Co.**

TYPE C, SV, REV, THERMAL (T<sup>STAT</sup> IN LINE), TERM PLATE

CD0798