



---

# Customer information packet

## XT3606T

60HP, 1185RPM, 3PH, 60HZ, 404T, A40064M, TEFC

Class - CLI GP A,B,C,D

Division - Division II

## Specifications

Enclosure	TEFC
Frame	404T
Frame Material	Iron
Frequency	60.00 Hz
Haz Area Class and Group	CLI GP A,B,C,D
Haz Area Division	Division II
Motor Letter Type	Three Phase
Output @ Frequency	60.000 HP @ 60 HZ
Phase	3
Synchronous Speed @ Frequency	1200 RPM @ 60 HZ
Voltage @ Frequency	230.0 V @ 60 HZ 460.0 V @ 60 HZ
Agency Approvals	UR NEMA_PREMIUM NEMA PREMIUM CCSAUSEEV
Ambient Temperature	40 °C
Auxiliary Box	NO AUXILLARY BOX
Base Indicator	Rigid
Bearing Grease Type	Polyrex EM (-20F +300F)
Current @ Voltage	139.000 A @ 230.0 V 69.300 A @ 460.0 V
Design Code	B
Drip Cover	No Drip Cover
Duty Rating	CONT
Efficiency @ 100% Load	94.5 %
Feedback Device	NO FEEDBACK
Heater Indicator	No Heater
High Voltage Full Load Amps	69.3 a
Insulation Class	F
Inverter Code	Inverter Ready
IP Rating	NONE

## Part detail

Revision	C
Type	AC
Mech. spec.	
Base	
Status	PRD/A
Elec. spec.	A40WG0844
Layout	617429-001
Eff. date	07-08-2024
CD Diagram	416820-002
Poles	06
Leads	3#4,6#6
Proprietary	False
Created date	12-01-2020

<b>KVA Code</b>	G
<b>Max Speed</b>	2700 rpm
<b>Motor Lead Quantity/Wire Size</b>	3 @ 4 AWG
<b>Motor Standards</b>	NEMA
<b>Motor Type</b>	A40064M
<b>Mounting Arrangement</b>	F1
<b>Number of Poles</b>	6
<b>Overall Length</b>	38.19 IN
<b>Power Factor</b>	86
<b>Product Family</b>	General Industrial
<b>Pulley End Bearing Type</b>	Ball
<b>Pulley Face Code</b>	Standard
<b>Service Factor</b>	1.15
<b>Shaft Diameter</b>	2.875 IN
<b>Shaft Ground Indicator</b>	No Shaft Grounding
<b>Shaft Rotation</b>	Reversible
<b>Shaft Slinger Indicator</b>	Shaft Slinger
<b>Speed</b>	1185 rpm
<b>Speed Code</b>	Single Speed
<b>Starting Method</b>	Direct on line
<b>Thermal Device - Bearing</b>	None
<b>Thermal Device - Winding</b>	None

**Nameplate**

**NP4152LUA**

<b>CAT #</b>	XT3606T			<b>SER</b>				<b>CC</b>	010A			
<b>SPEC</b>	A40-7119-0844			<b>RATING</b>	40C AMB-CONT							
<b>HZ</b>	<b>VOLTS</b>		<b>AMPS</b>		<b>RPM</b>	<b>HP</b>	<b>CODE</b>	<b>SF</b>	<b>DES</b>	<b>PF</b>	<b>NEMA NOM. EFF</b>	
60	230/460		139/69.3		1185	60	G	1.15	B	86 %	94.5 %	%
										%		%
<b>PH</b>	3	<b>CL</b>	F	<b>MAX RPM</b>	2700	<b>MAX CORR KVAR</b>	12.5					
<b>BRG</b>	<b>DE</b>	6316	<b>ODE</b>	6316	<b>ENCL</b>	TEFC	<b>FR</b>	404T	<b>IP</b>	54		
<b>GREASE</b>	POLYREX EM						<b>MTR WT</b>	LBS				
<b>CL I DIV 2 GRPS A,B,C,D</b>				<b>CL I ZONE 2 GRPS</b>				<b>IIA,IIB,IIC</b>		<b>TEMP T</b>	180	<b>C</b>
<b>INV READY</b>	<b>CT</b>	10:1	<b>HZ</b>	6-60	<b>VT</b>	0-60	<b>HZ</b>	1000:1	<b>CHP</b>	60-90	<b>HZ</b>	1:1.5
<b>INV TEMP CL</b>	T3A	<b>C</b>	<b>USABLE AT</b>	50HZ 50HP 190/380V 140/69.9A						1.0SF		

REL. S. O.	FRAME	HP	TYPE	PHASE/HERTZ	RPM	VOLTS
	404T	60	P	3/60	1185	230/460
AMPS	DUTY	AMB <sup>o</sup> C/ INSUL.	S. F.	NEMA DESIGN	CODE LETTER	ENCL.
139/69.3	CONT	40/F	1.15	B	G	TEFC
E/S	ROTOR	TEST S. O.	TEST DATE	STATOR RES. @25 <sup>o</sup> C (OHMS (BETWEEN LINES))		
595762	418142-71EE	---	---	.0274/.109		
<b>PERFORMANCE</b>						
LOAD	HP	AMPERES	RPM	% POWER FACTOR	% EFFICIENCY	
NO LOAD	0	19.9	1200	6.18	0	
1/4	15.0	26.0	1197	59.4	91.2	
2/4	30.0	37.9	1194	78.7	94.2	
3/4	45.0	52.7	1191	84.3	94.7	
4/4	60.0	69.3	1187	85.8	94.5	
5/4	75.0	86.7	1184	86.2	94.0	
<b>SPEED TORQUE</b>						
LOCKED ROTOR	RPM	% FULL LOAD	TORQUE LB.-FT.	AMPERES		
	0	159	421	425		
PULL UP	240	145	384	411		
BREAKDOWN	1133	245	651	243		
FULL LOAD	1187	100	265	69.3		

AMPERES SHOWN FOR 460. VOLT CONNECTION. IF OTHER VOLTAGE CONNECTIONS ARE AVAILABLE, THE AMPERES WILL VARY INVERSELY WITH THE RATED VOLTAGE

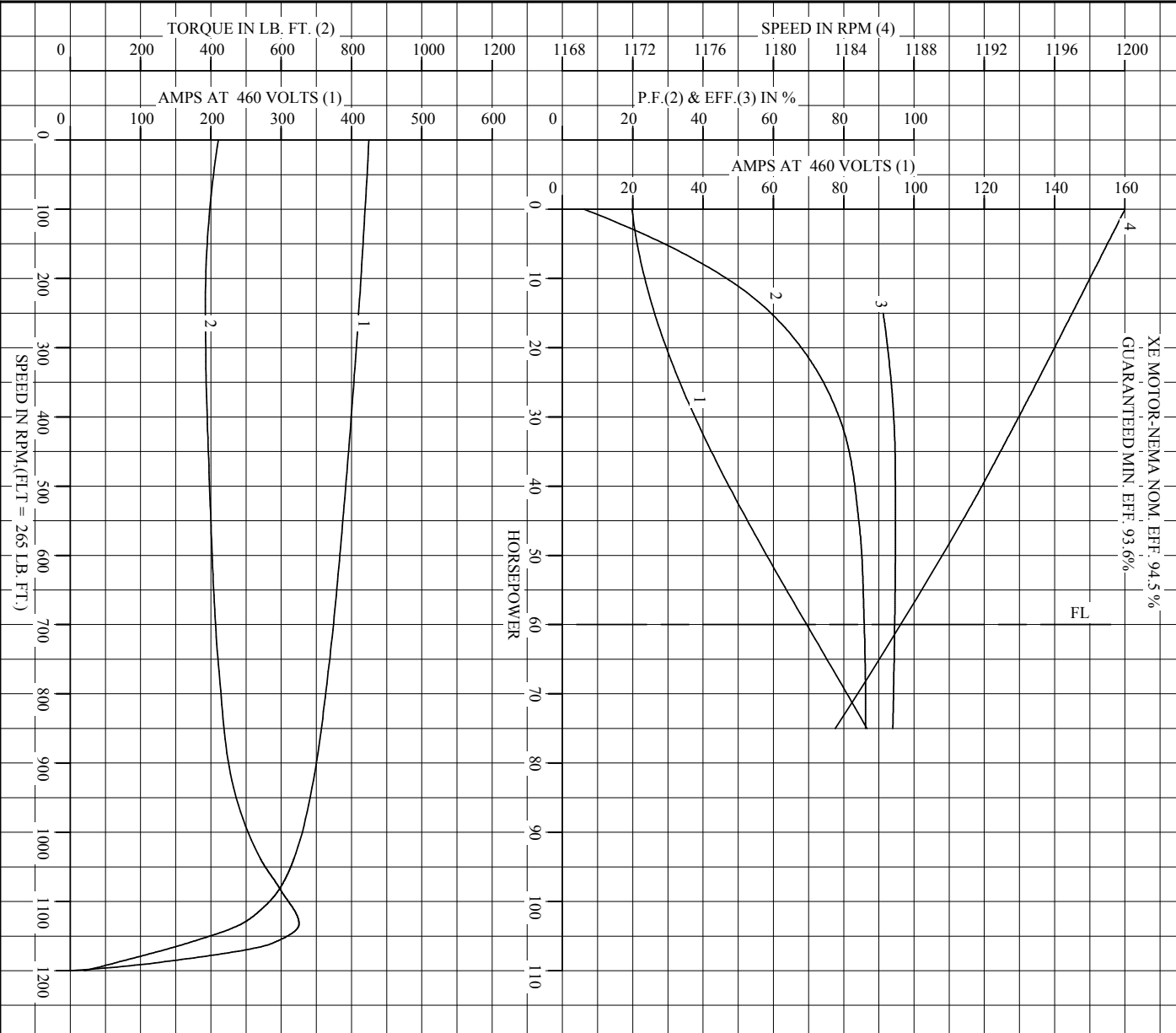
REMARKS: TYPICAL DATA  
 XE MOTOR-NEMA NOM. EFF. 94.5 %  
 GUARANTEED MIN. EFF. 93.6 %



DR. BY J. P. TSAO  
 CK. BY J. P. TSAO  
 APP. BY E. J. CHRISTIAN  
 DATE 10/8/17

**A-C MOTOR PERFORMANCE DATA**  
**A40WG0844-R015**  
 ISSUE DATE 12/01/20

REL. S. O.		RPM	1185	S. F.	1.15	ROTOR	4181A2-71EE
FRAME	404T	VOLTS	230/460	NEMA DESIGN	B	TEST S. O.	TYPICAL DATA
HP	60	AMPS	139/69.3	CODE LETTER	G	TEST DATE	---
TYPE	P	DUTY	CONT	ENCLOSURE	TEFC	STATOR RES. @ 25 °C	.0274/.109
PHASR/HERTZ	3/60	AMB °C/INSUL	40/F	E/S	595762	OHMS (BETWEEN LINES)	



AMPERES SHOWN FOR 460 VOLTS  
AMPERES WILL VARY INVERSELY WITH THE RATED VOLTAGE.

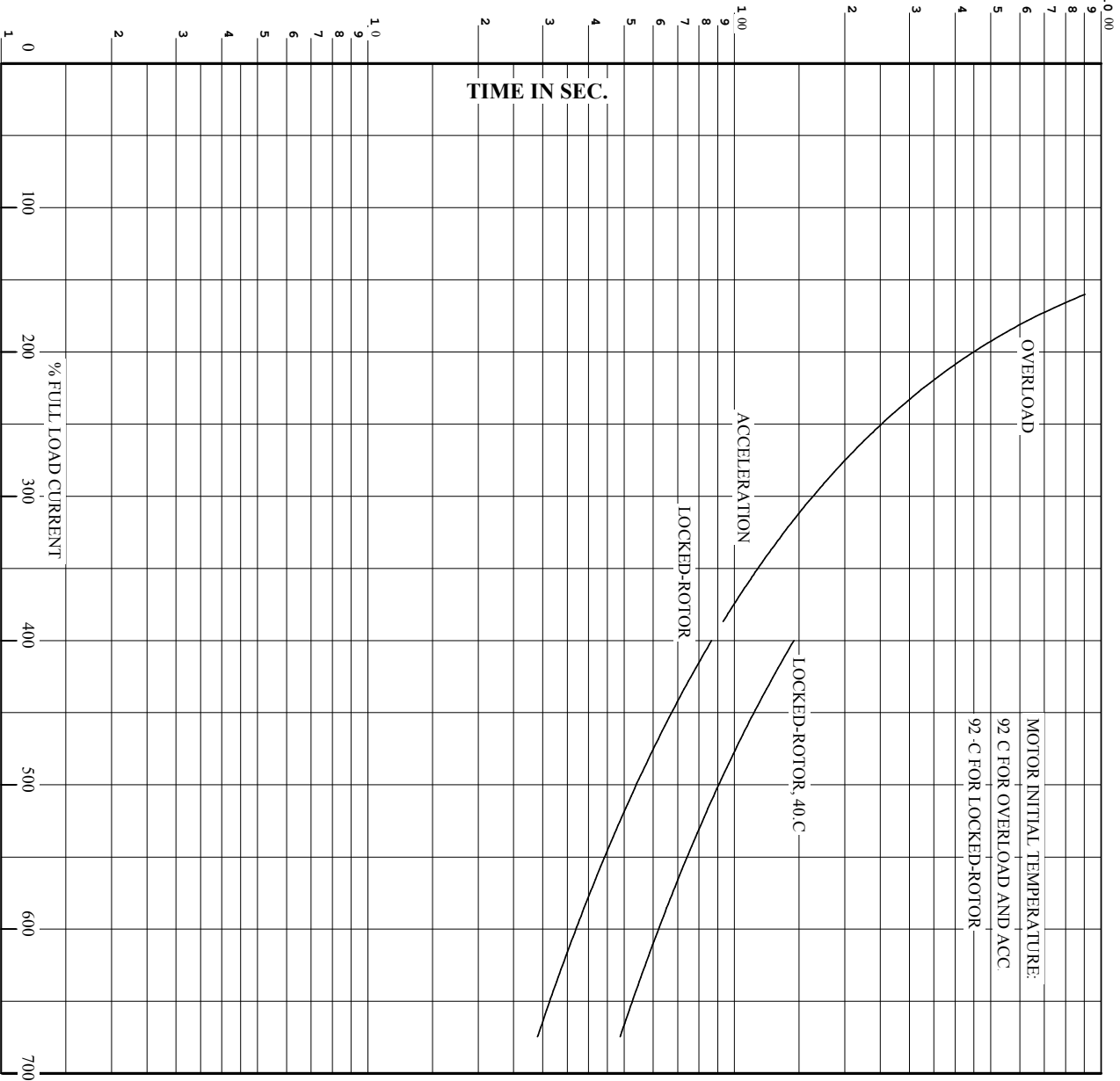
VOLT CONNECTION, IF OTHER VOLTAGE CONNECTIONS ARE AVAILABLE, THE

**BALDOR**  
A MEMBER OF THE ABB GROUP

DR. BY J.P. TSAO  
CK. BY J.P. TSAO  
APP. BY E. CHRISTIAN  
DATE 10/18/17

**A-C MOTOR PERFORMANCE CURVES**  
A40W G0844-R015  
ISSUE DATE 12/01/20

REL. S.O. **404T** RPM **1185** S.F. **1.15** ROTOR **418142-71EE**  
 FRAME **404T** VOLTS **230/460** NEMA DESIGN **B** TEST S.O. **TYPICAL DATA**  
 HP **60** AMPS **139/69.3** CODE LETTER **G** TEST DATE **---**  
 TYPE **P** DUTY **CONT** ENCLOSURE **TEFC** SPATOR RES @ 25 °C **.0274/.109**  
 PHASE/HERTZ **3/60** AMB °C/INSUL **40/F** E/S **595762** OMS (BETWEEN LINES)



REMARKS: THERMAL LIMIT CURVE  
 XE MOTOR-NEMA NOM. EFF. 94.5 %  
 GUARANTEED MIN. EFF. 93.6%

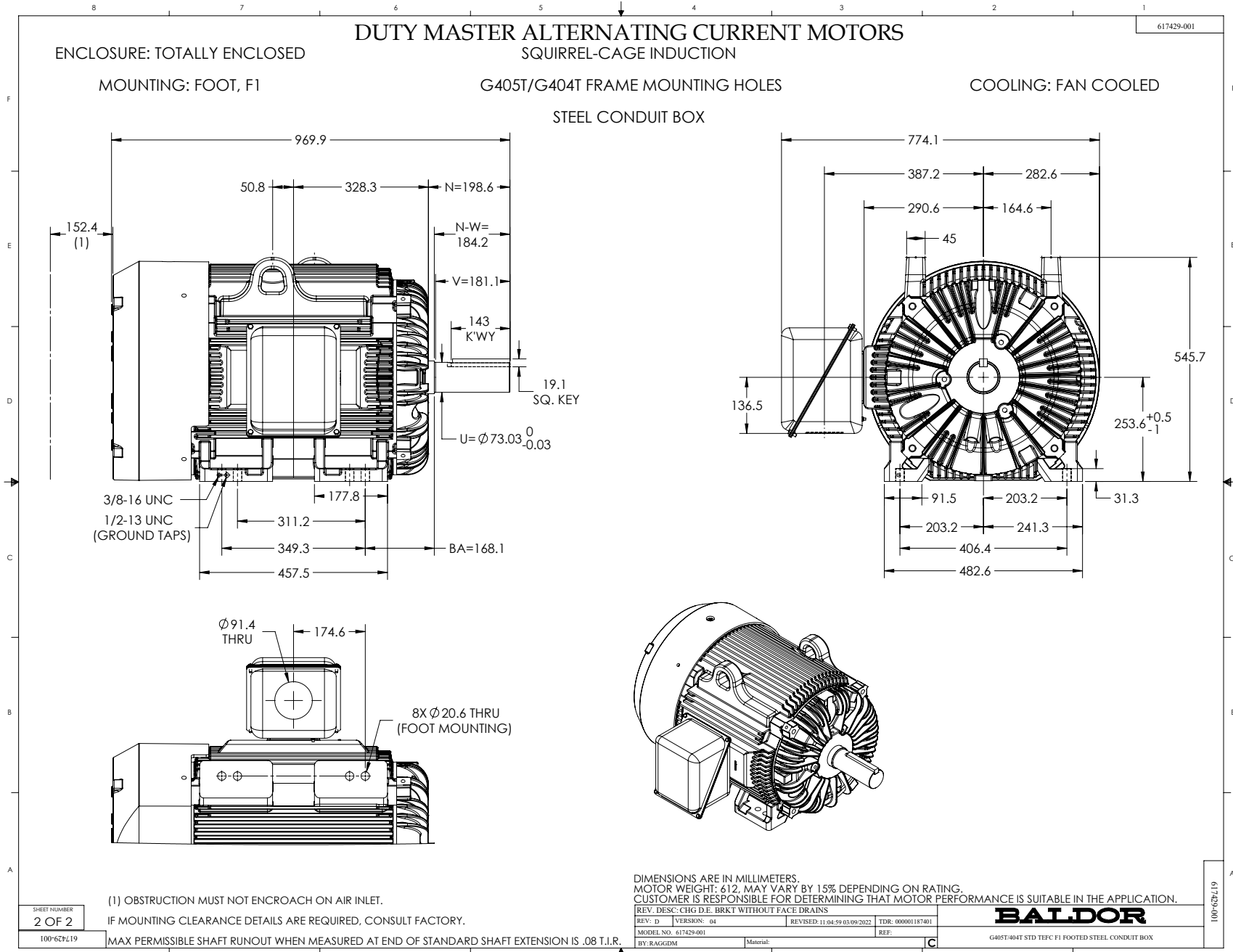
AMPERES SHOWN FOR **460** VOLT CONNECTION, IF OTHER VOLTAGE CONNECTIONS ARE AVAILABLE, THE AMPERES WILL VARY INVERSELY WITH THE RATED VOLTAGE.



DR. BY J.P. TSAO  
 CK. BY J.P. TSAO  
 App. BY E. CHRISTIAN  
 DATE 10/8/17

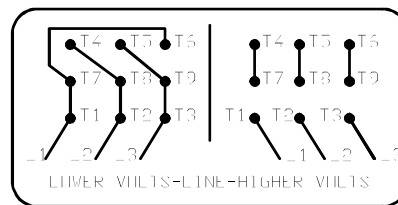
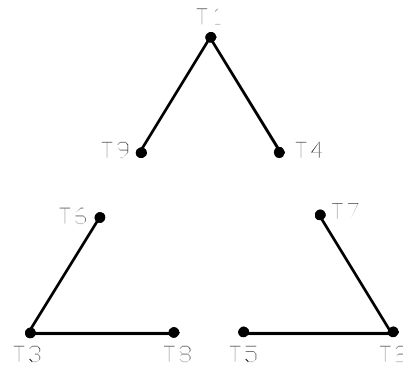
**A-C MOTOR**  
**PERFORMANCE** **A40WG0844-R015**  
**CURVES** **ISSUE DATE 12/01/20**





416820-002

A-C MOTOR  
 CONNECTION DIAGRAM  
 STANDARD 9 LEAD DELTA-CONNECTED



(N.P. 1575-B)

416820-002

REV. DESC: FONT CHANGE FOR PDF SEARCHABLE		
REV. LTR: A	VERSION: 01	TDR: 000001009382
FILE: \MGA\00000\661	REVISED: 02:46:19 02/13/2020	BY: MGHMTT
MTL: -	© □	

**BALDOR - RELIANCE®**

CONN DIAG - STANDARD 9 LEAD, DELTA-CONNECTED

SH 1 of 1