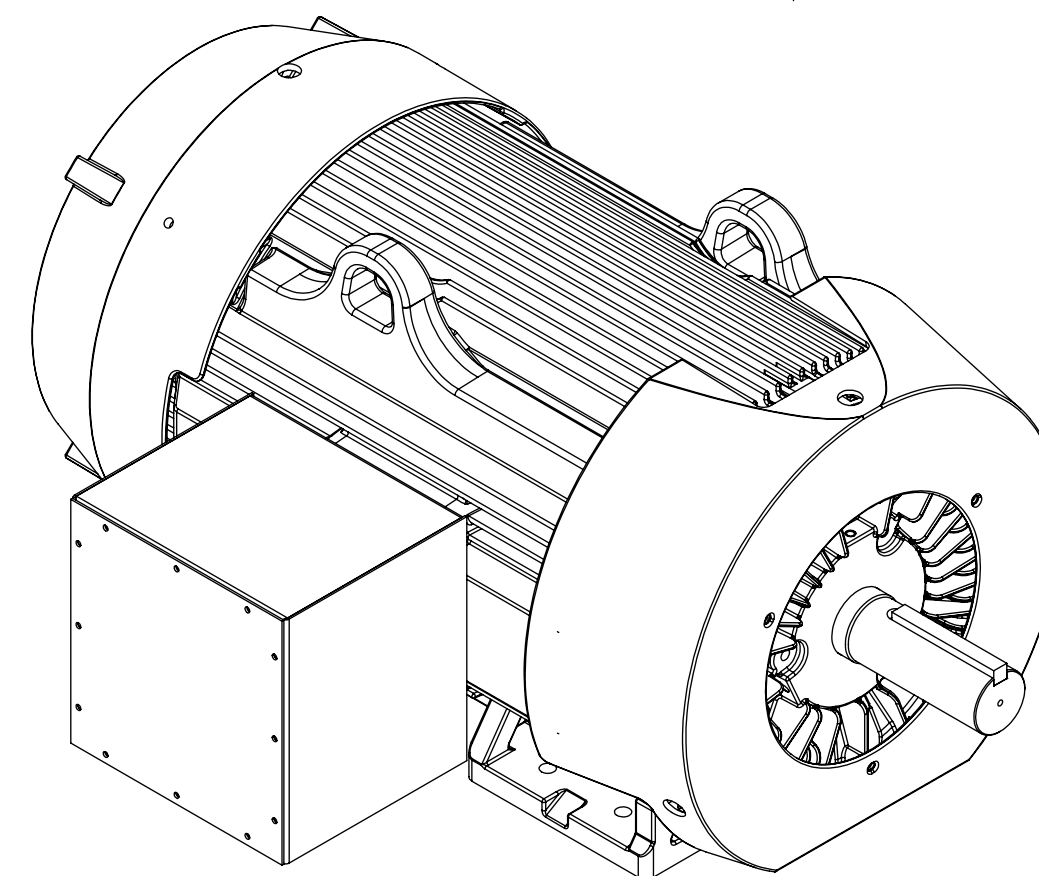
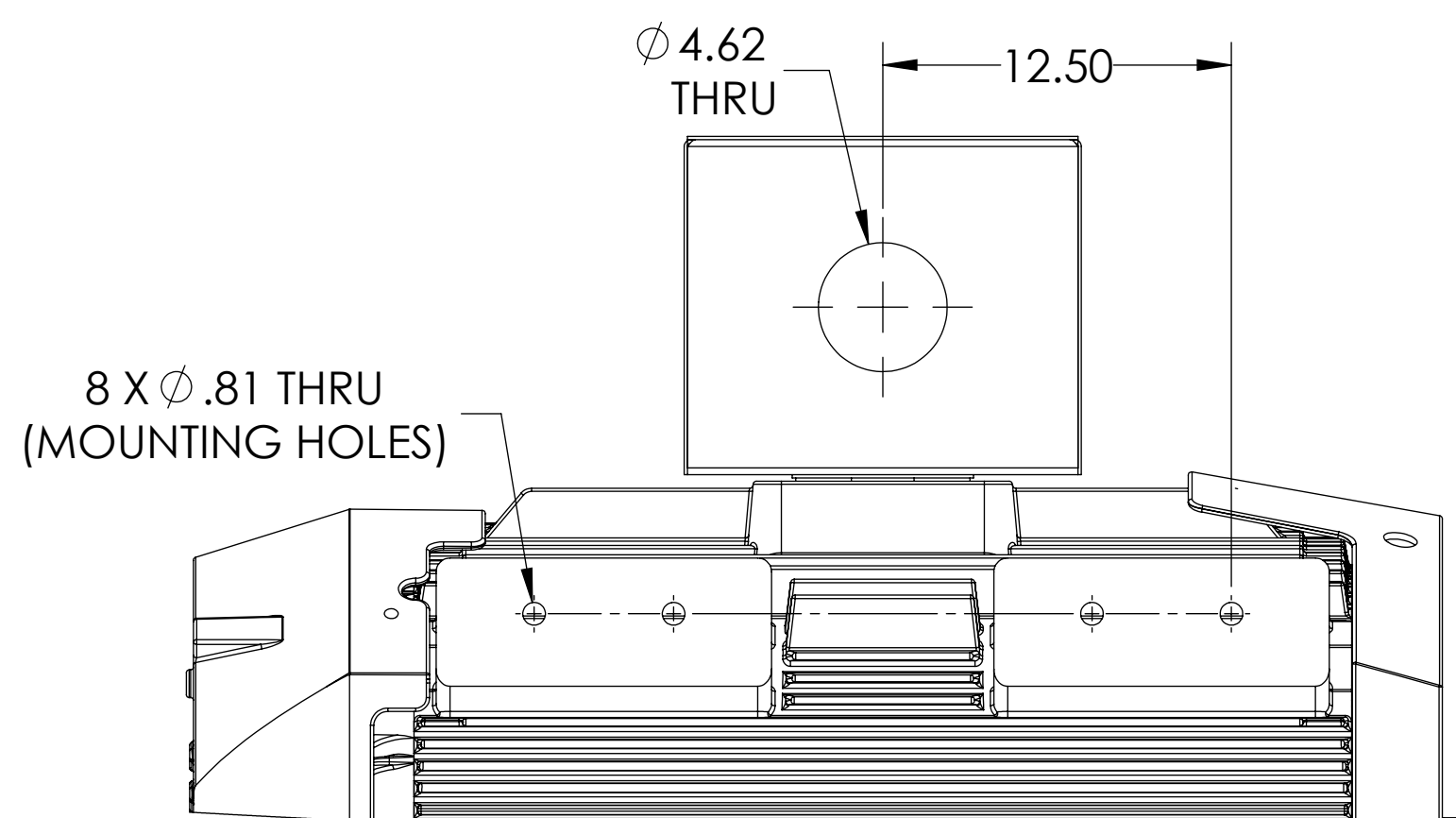
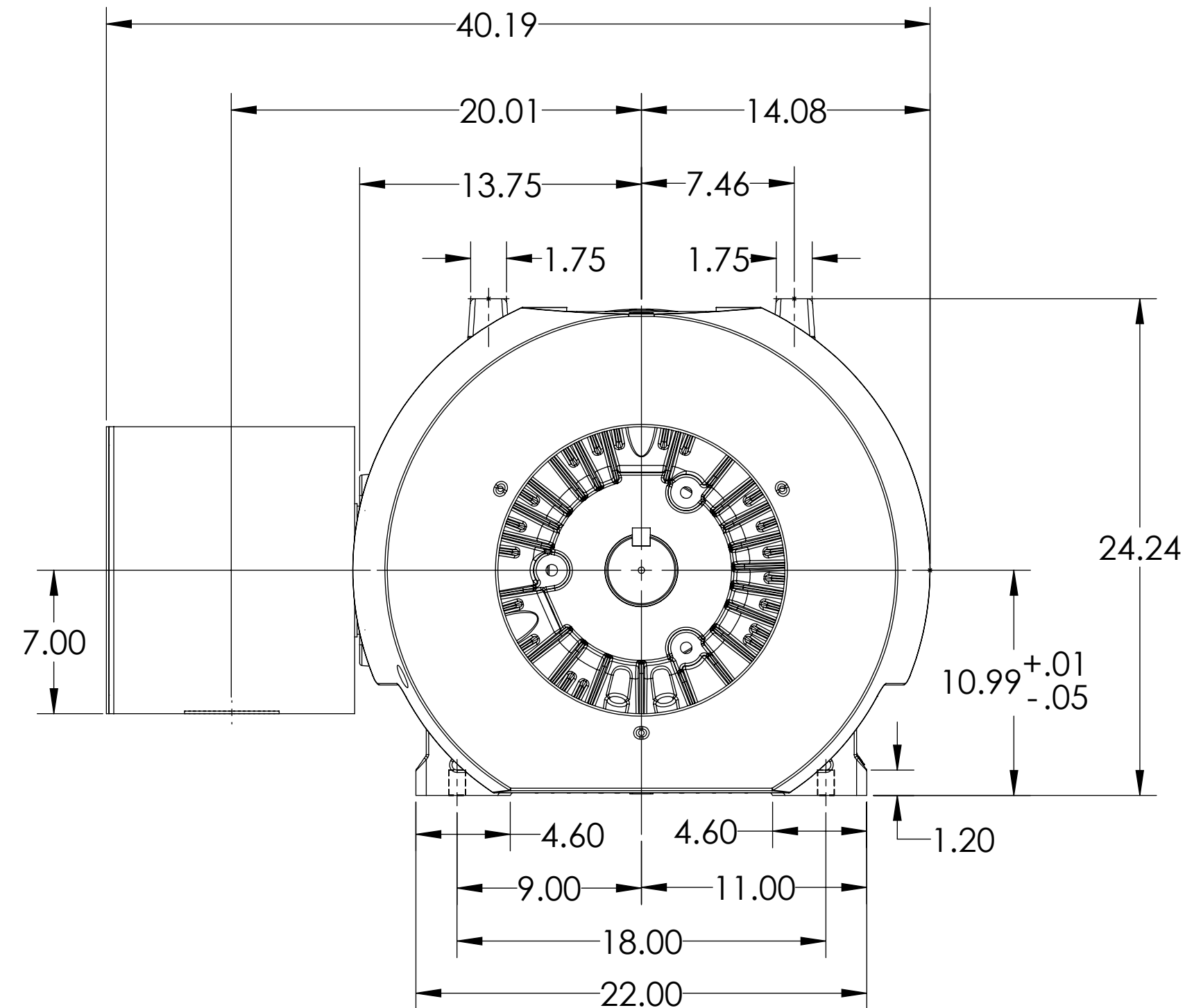


MOUNTING: FOOT, F-1 SIDE

G449T/G447T FRAME MOUNTING HOLES

COOLING: FAN COOLED

14X14X12 CONDUIT BOX



REV. DESC: ADDING METRIC DS			
REV: B	VERSION: 02	REVISED:01:48:14 12/20/2021	TDR: 000001183238
MODEL NO. 617435-234			
BY:USJEDIL			

BALDOR

G449/447T TEFC F1 FOOT/14X14X12 CONDUIT BOX

SHEET NUMBER
1 OF 2

617435-234

1 OBSTRUCTIONS SHOULD NOT ENCROACH ON AIR INLET.

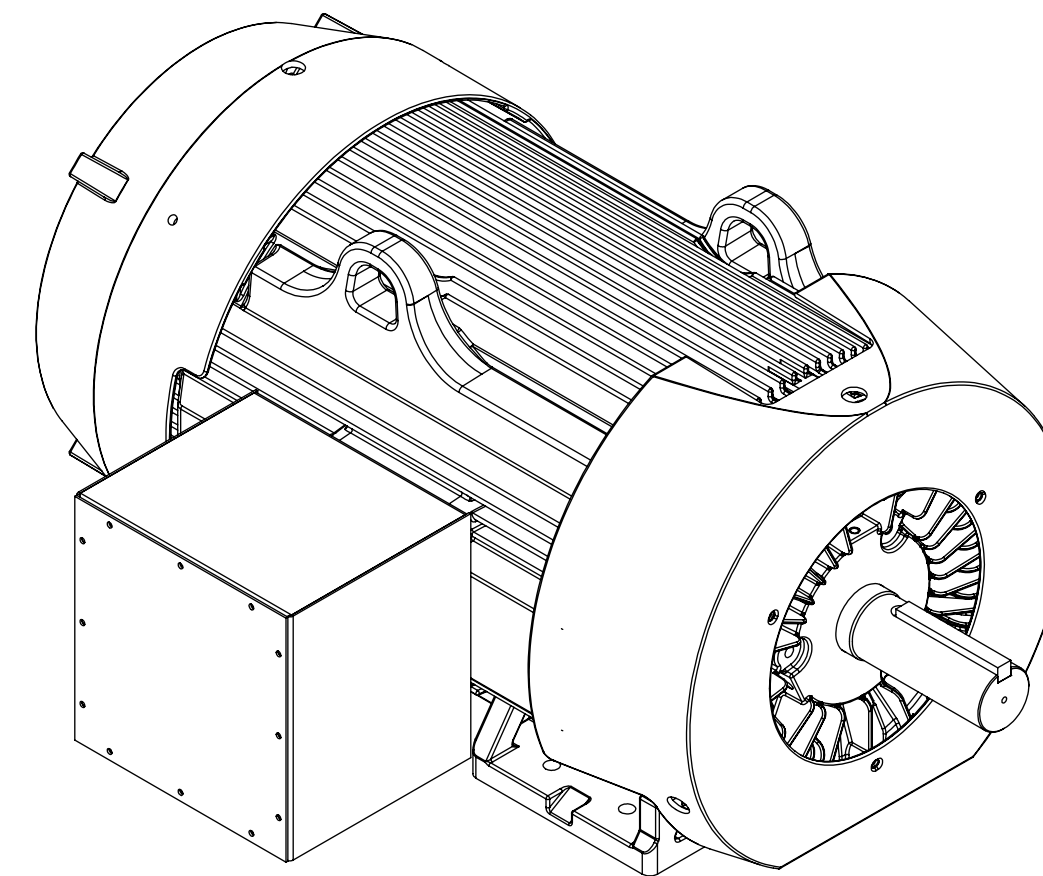
IF MOUNTING CLEARANCE DETAILS ARE REQUIRED, CONSULT FACTORY.
MAX PERMISSIBLE SHAFT RUNOUT WHEN MEASURED AT END OF STANDARD SHAFT EXTENSION IS .003" T.I.R.

COOLING: FAN COOLED

Technical drawing of a circular mechanical component, likely a motor or generator, showing dimensions in millimeters. The drawing includes a side view and a top view.

Dimensions:

- Overall width: 1020.8
- Distance from left edge to center: 508.2
- Distance from center to right edge: 357.7
- Distance from left edge to inner circle center: 349.3
- Distance from inner circle center to right edge: 189.4
- Radius of inner circle: 44.5
- Radius of outer circle: 44.5
- Height of component: 615.7
- Height of base: 177.8
- Height of base (with tolerance): $279.1^{+0.3}_{-1.3}$
- Height of base (with tolerance): 30.5
- Distance from left edge to center of base: 116.8
- Distance from center of base to right edge: 116.8
- Distance from left edge to center of base (with tolerance): $228.6^{+0.3}_{-1.3}$
- Distance from center of base to right edge (with tolerance): 279.4
- Distance from left edge to center of base: 457.2
- Distance from center of base to right edge: 558.8



G449/447T TEFC F1 FOOT/14X14X12 CONDUIT BOX

IF MOUNTING CLEARANCE DETAILS ARE REQUIRED, CONSULT FACTORY.
MAX PERMISSIBLE SHAFT RUNOUT WHEN MEASURED AT END OF STANDARD SHAFT EXTENSION IS .08 T.I.R.