

DUTY MASTER ALTERNATING CURRENT MOTORS
SQUIRREL-CAGE INDUCTION

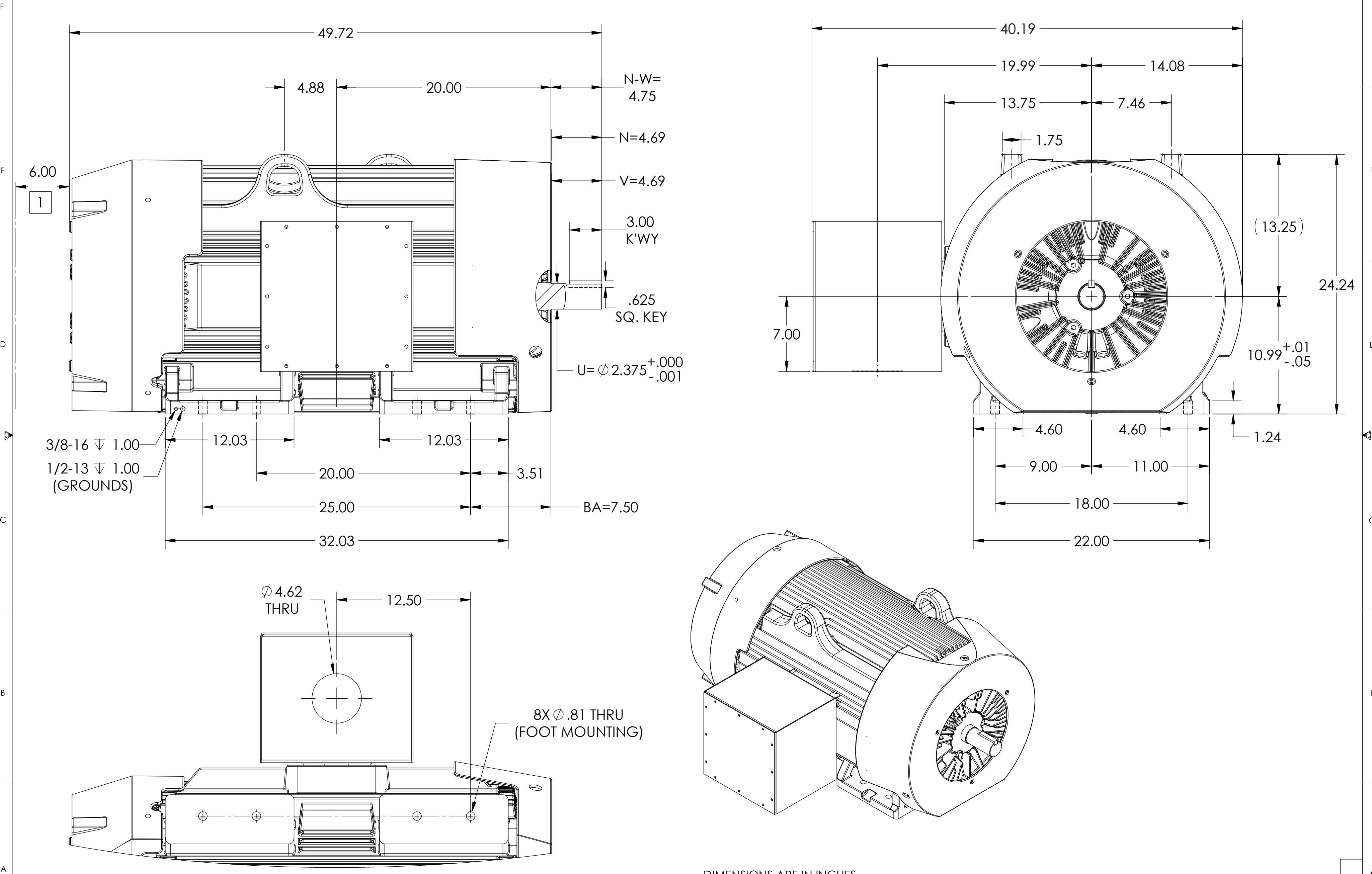
617434-336

ENCLOSURE: TOTALLY ENCLOSED

MOUNTING: FOOT, F-1 SIDE

G449TS/G447TS FRAME MOUNTING HOLES

COOLING: FAN COOLED



1 OBSTRUCTIONS MUST NOT ENCROACH ON AIR INLET.

IF MOUNTING CLEARANCE DETAILS ARE REQUIRED, CONSULT FACTORY.
MAX PERMISSIBLE SHAFT RUNOUT WHEN MEASURED AT END OF STANDARD SHAFT EXTENSION IS .003" T.I.R.

DIMENSIONS ARE IN INCHES.
WEIGHT (LBS): 3080, MOTOR WEIGHTS MAY VARY BY 15% DEPENDING ON RATING
CUSTOMER IS RESPONSIBLE FOR DETERMINING THAT MOTOR PERFORMANCE IS SUITABLE IN THE APPLICATION.

REV. DESC: UPDATE DS QUALITY			
REV: C	VERSION: 03	REVISED: 09:28:40 11/23/2021	TDR: 000001181853
MODEL NO. 617434-336			REF:
BY: USJEDIL		Material:	C

BALDOR

G449/G447TS TEFC FOOT F1/14X14X12 CONDUIT BOX

617434-336

617434-336

DUTY MASTER ALTERNATING CURRENT MOTORS
SQUIRREL-CAGE INDUCTION

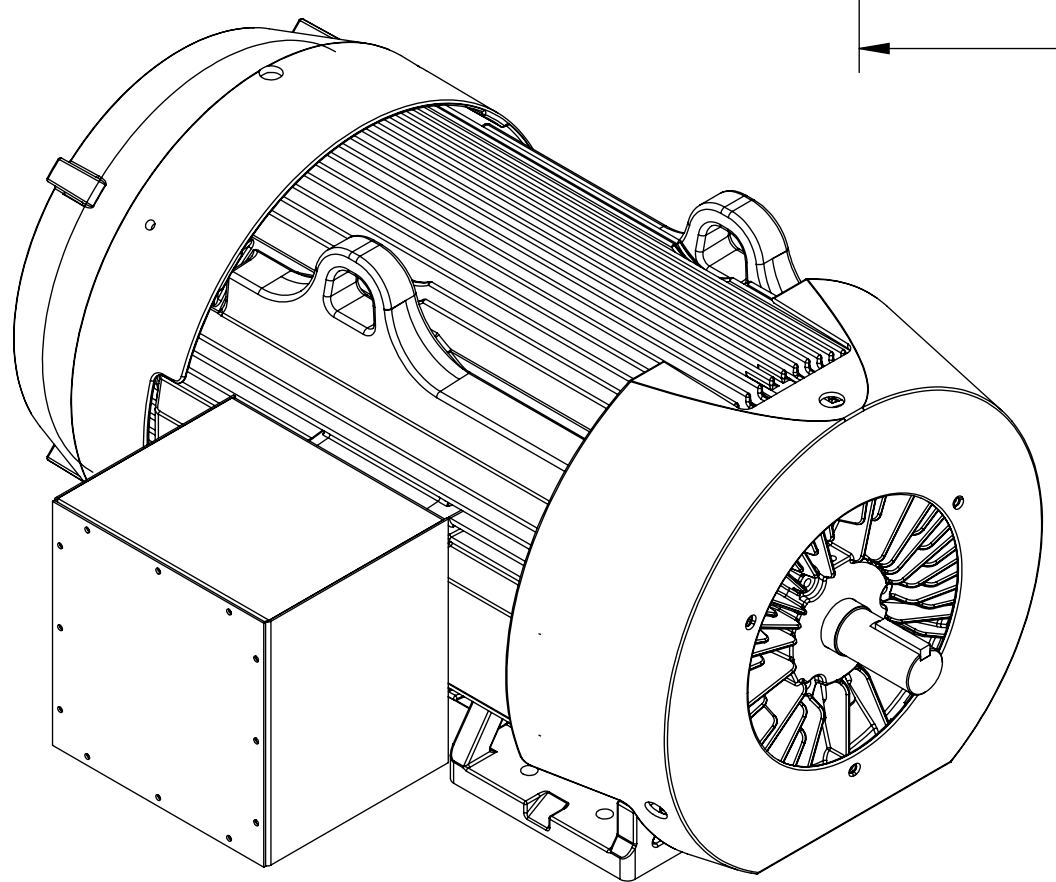
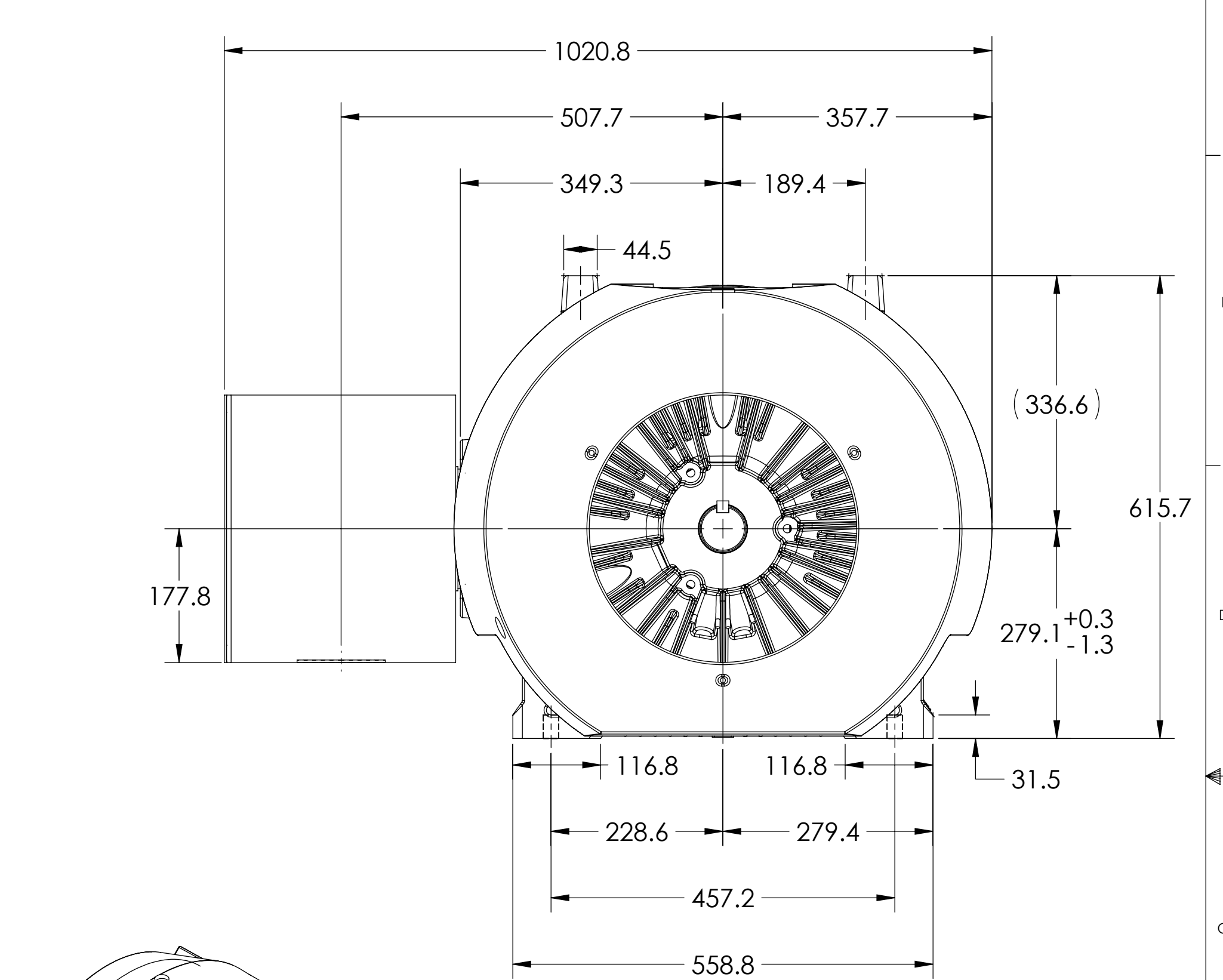
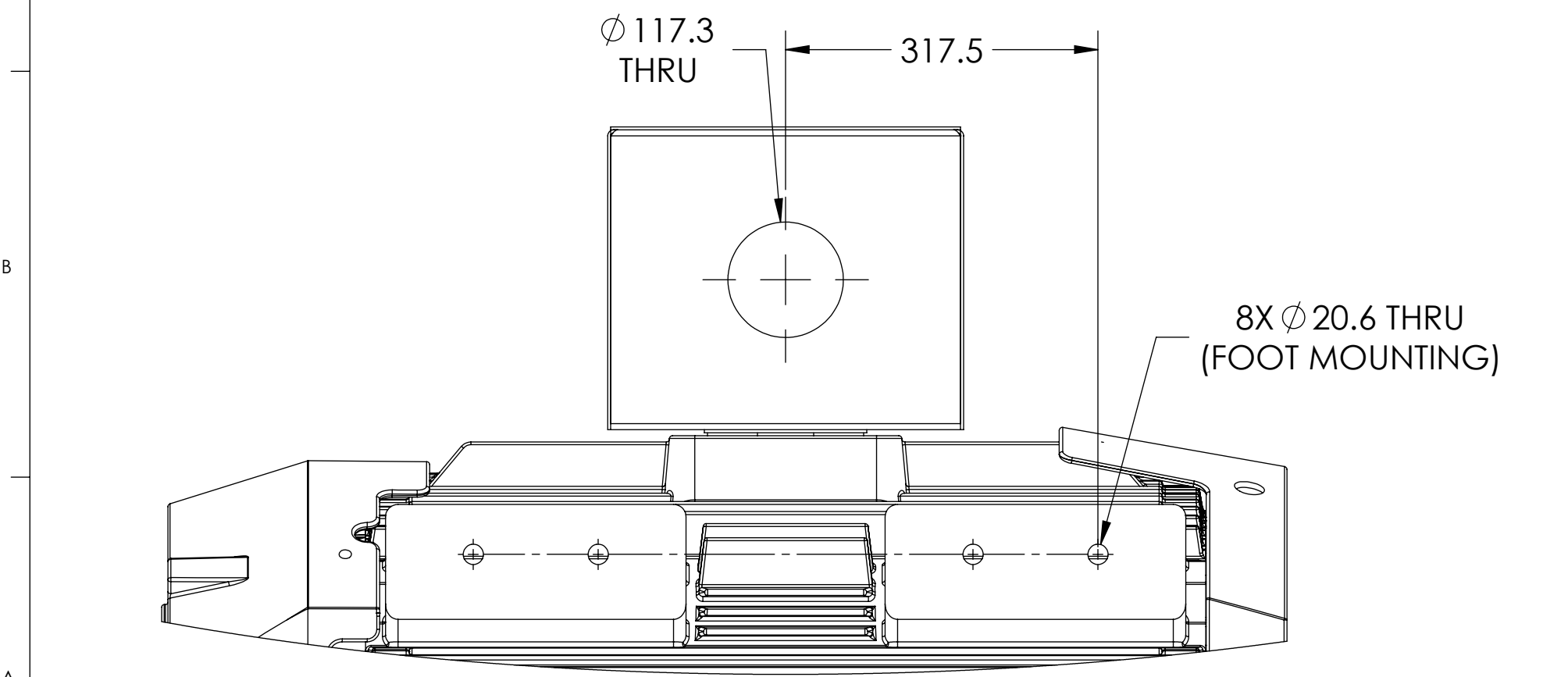
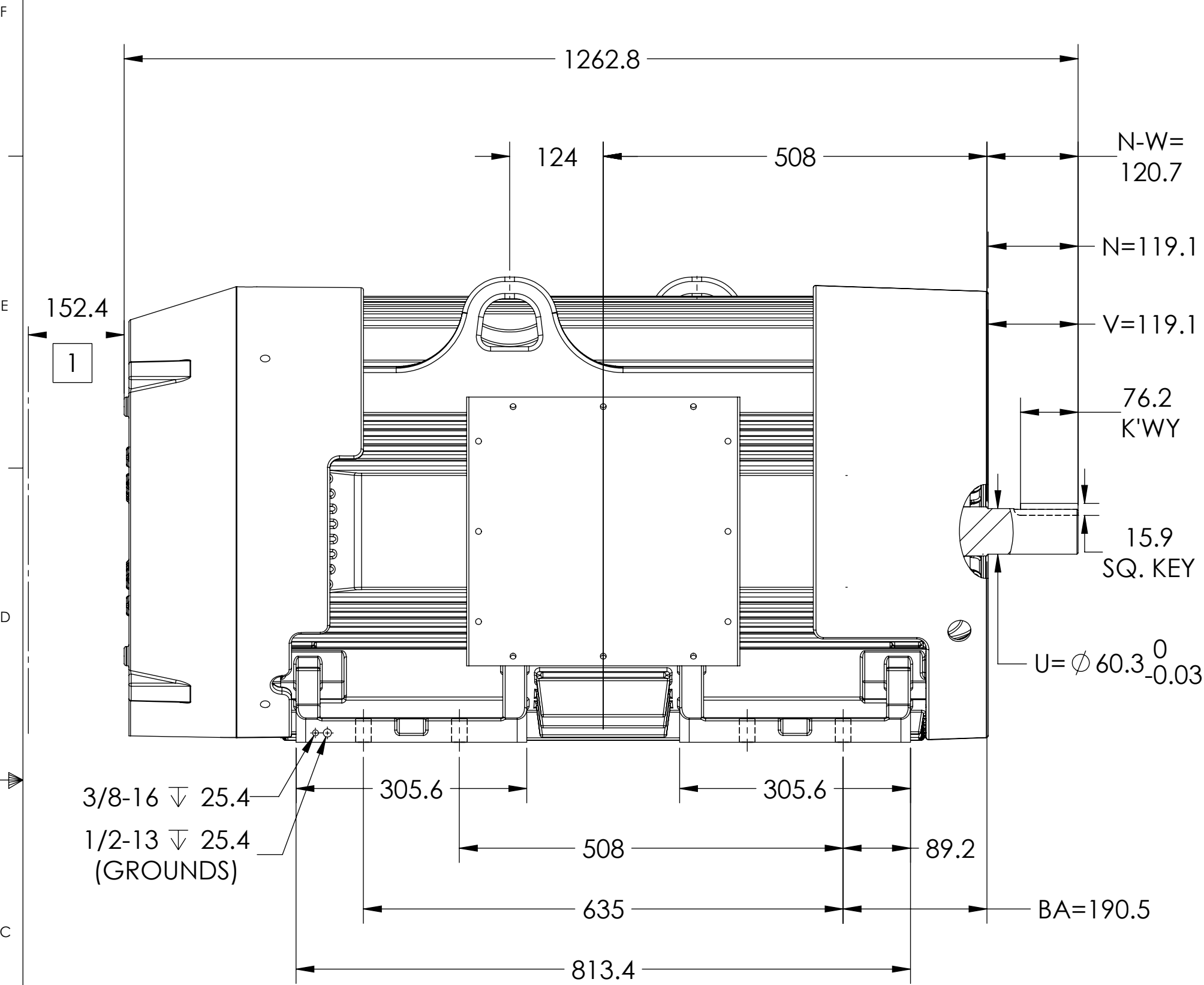
617434-336

ENCLOSURE: TOTALLY ENCLOSED

MOUNTING: FOOT, F-1 SIDE

G449TS/G447TS FRAME MOUNTING HOLES

COOLING: FAN COOLED



DIMENSIONS ARE IN MILLIMETERS.
WEIGHT (KG): 1397, MOTOR WEIGHTS MAY VARY BY 15% DEPENDING ON RATING
CUSTOMER IS RESPONSIBLE FOR DETERMINING THAT MOTOR PERFORMANCE IS SUITABLE IN THE APPLICATION.

REV. DESC: UPDATE DS QUALITY			
REV: C	VERSION: 03	REVISED: 09:28:40 11/23/2021	TDR: 000001181853
MODEL NO. 617434-336		REF:	
BY: USJEDIL	Material:	C	

BALDOR

G449/G447TS TEFC FOOT F1/14X14X12 CONDUIT BOX

1 OBSTRUCTIONS MUST NOT ENCROACH ON AIR INLET.

IF MOUNTING CLEARANCE DETAILS ARE REQUIRED, CONSULT FACTORY.
MAX PERMISSIBLE SHAFT RUNOUT WHEN MEASURED AT END OF STANDARD SHAFT EXTENSION IS .08 T.I.R.

617434-336

617434-336