

DUTY MASTER ALTERNATING CURRENT MOTORS

SQUIRREL-CAGE INDUCTION

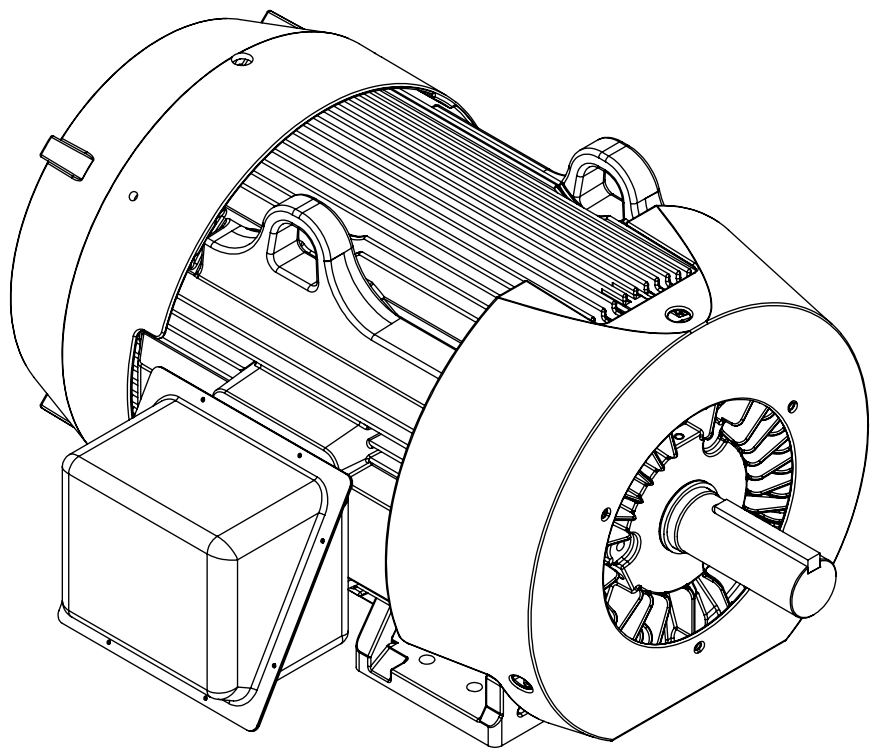
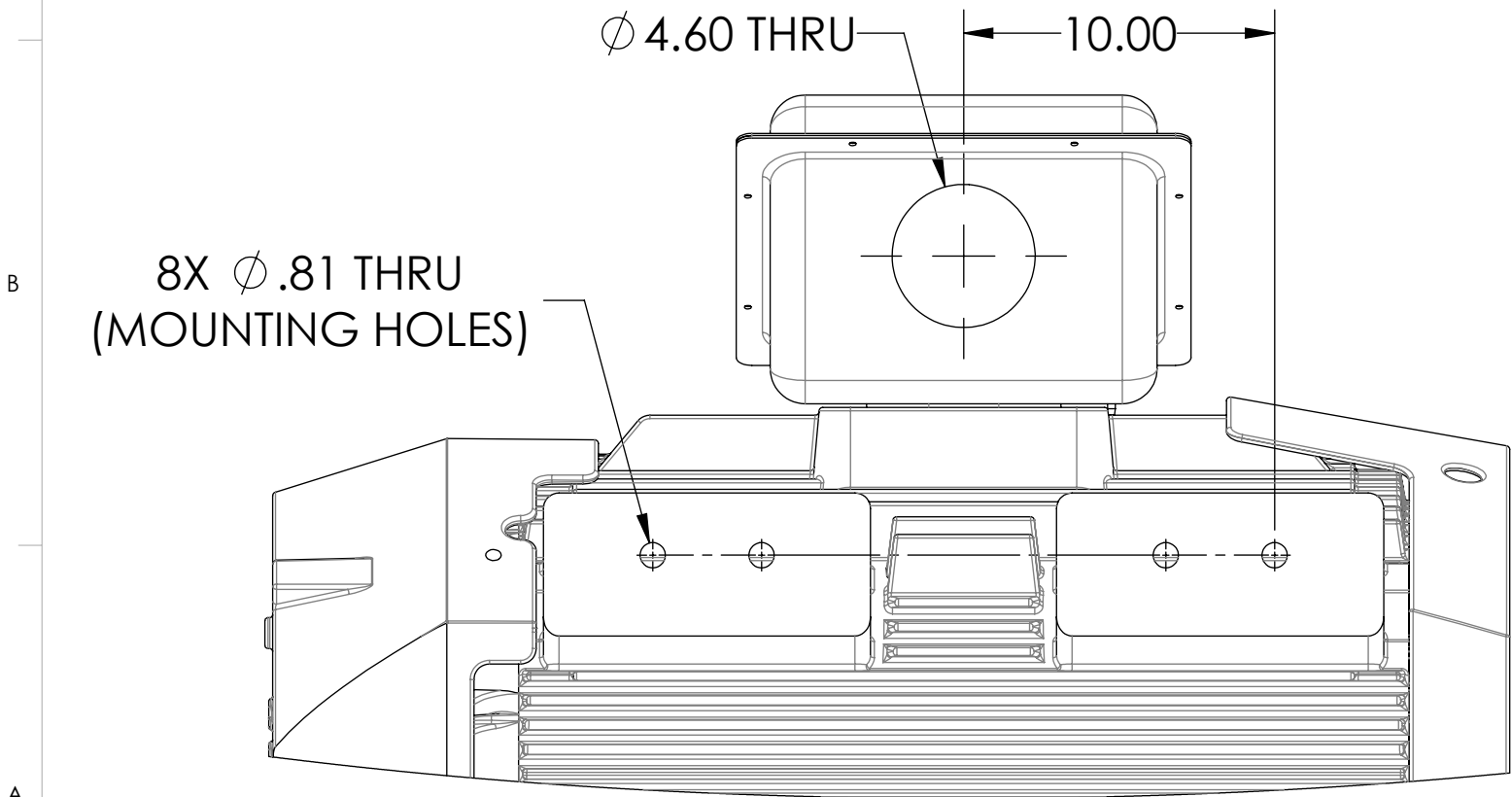
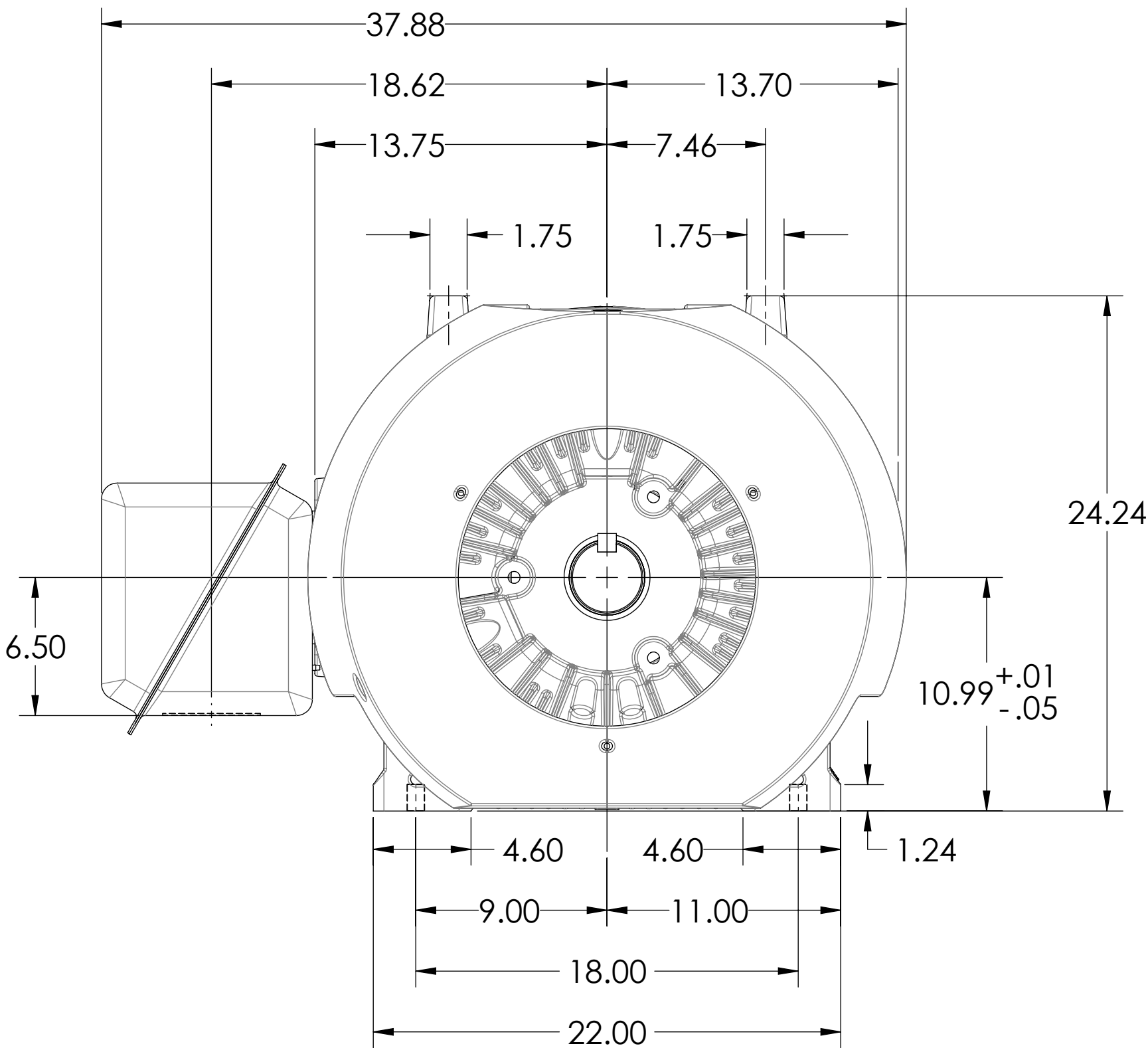
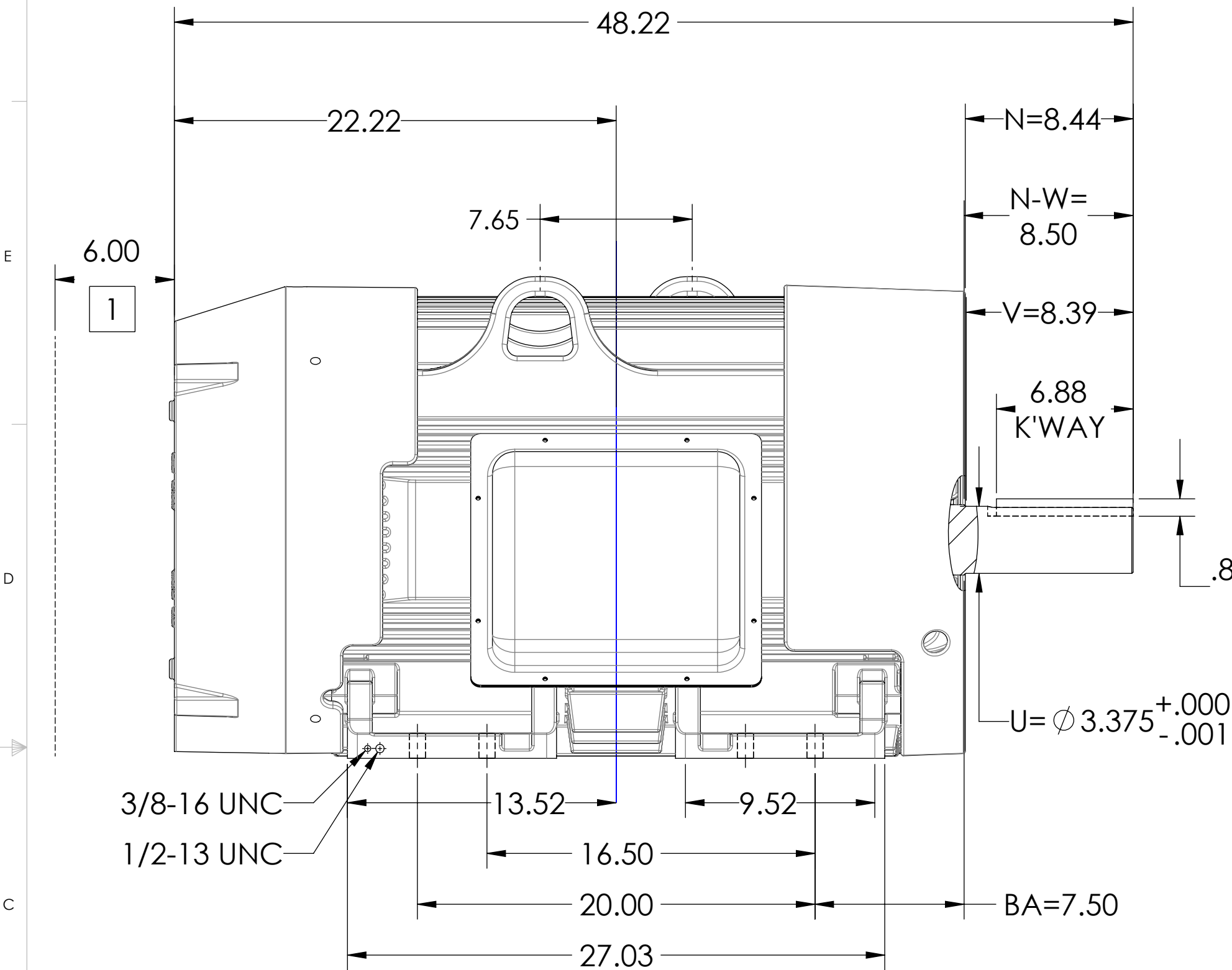
COOLING: FAN COOLED

ENCLOSURE: TOTALLY ENCLOSED

MOUNTING: FOOT, F1

G447T/G445T FRAME MOUNTING HOLES

617435-165



DIMENSIONS ARE IN INCHES.
WEIGHT (LBS): 2515, MOTOR WEIGHTS MAY VARY BY 15% DEPENDING ON RATING.
CUSTOMER IS RESPONSIBLE FOR DETERMINING THAT MOTOR PERFORMANCE IS SUITABLE IN THE APPLICATION.

REV. DESC: NEW DRAWING	VERSION: 00	REVISED: 06/24/26 07/20/2016	TDR: 000000988301
MODEL NO. 617435-165	BY: USJEDIL	Material: -	REF: -

BALDOR

G447T/445T TEFC F1 FOOTED S/C STEEL C/BOX & AIR DEF

SHEET NUMBER
1 OF 1

617435-165

1 OBSTRUCTION MUST NO ENCROACH ON AIR INLET

IF MOUNTING CLEARANCE DETAILS ARE REQUIRED, CONSULT FACTORY.
MAXIMUM PERMISSIBLE SHAFT RUNOUT WHEN MEASURED AT END OF
STANDARD SHAFT EXTENSION IS .003.

617435-165