



---

# Customer information packet

## XT3104T-5

10HP, 1760RPM, 3PH, 60HZ, 215T, 0750M, TEFC, F1

Class - CLI GP A,B,C,D

Division - Division II

## Specifications

Enclosure	TEFC
Frame	215T
Frame Material	Iron
Frequency	60.00 Hz
Haz Area Class and Group	CLI GP A,B,C,D
Haz Area Division	Division II
Motor Letter Type	Three Phase
Output @ Frequency	10.000 HP @ 60 HZ
Phase	3
Synchronous Speed @ Frequency	1800 RPM @ 60 HZ
Voltage @ Frequency	575.0 V @ 60 HZ
Agency Approvals	UR NEMA_PREMIUM NEMA PREMIUM CSA EEV CCSA US
Ambient Temperature	40 °C
Auxillary Box	No Auxillary Box
Auxillary Box Lead Termination	None
Base Indicator	Rigid
Bearing Grease Type	Polyrex EM (-20F +300F)
Blower	None
Constant Torque Speed Range	3
Current @ Voltage	9.700 A @ 575.0 V
Design Code	B
Drip Cover	No Drip Cover
Duty Rating	CONT
Efficiency @ 100% Load	91.7 %
Electrically Isolated Bearing	Not Electrically Isolated
Feedback Device	NO FEEDBACK
Haz Area Temp Code	T3C
Heater Indicator	No Heater

## Part detail

Revision	B
Type	AC
Mech. spec.	
Base	
Status	PRD/A
Elec. spec.	07WGR568
Layout	07LYJ065
Eff. date	12-09-2022
CD Diagram	CD0006
Poles	04
Leads	3#14
Proprietary	False
Created date	07-27-2021

High Voltage Full Load Amps	9.7 a
Insulation Class	F
Inverter Code	Inverter Duty
IP Rating	NONE
KVA Code	H
Lifting Lugs	Standard Lifting Lugs
Locked Bearing Indicator	No Locked Bearing
Motor Lead Termination	Flying Leads
Motor Standards	NEMA
Motor Type	0750M
Mounting Arrangement	F1
Number of Poles	4
Overall Length	18.47 IN
Power Factor	84
Product Family	General Purpose
Pulley Face Code	Standard
Rodent Screen	None
Service Factor	1.15
Shaft Diameter	1.375 IN
Shaft Ground Indicator	No Shaft Grounding
Shaft Rotation	Reversible
Speed	1760 rpm
Speed Code	Single Speed
Starting Method	Direct on line
Thermal Device - Bearing	None
Thermal Device - Winding	None
Vibration Sensor Indicator	No Vibration Sensor
Winding Thermal 1	None
Winding Thermal 2	None

**Nameplate**

<b>NP4224L</b>									
<b>CAT.NO.</b>	XT3104T-5				<b>I.P.</b>	54			
<b>SPEC.</b>	07-0000-1120				<b>ENCL</b>	TEFC			
<b>FRAME</b>	215T	<b>H.P.</b>	10		<b>T. CODE</b>	T3C			
<b>VOLTS</b>	575		<b>P.F.</b>	84					
<b>F.L. AMPS</b>	9.7		<b>RATING</b>	40C AMB-CONT					
<b>R.P.M.</b>	1760		<b>USABLE AT 208V</b>	N/A					
<b>HZ.</b>	60	<b>PH.</b>	3	<b>CLASS</b>	F				
<b>SER.F.</b>	1.15		<b>DES.</b>	B	<b>SL HZ</b>	0.9			
<b>NEMA NOM. EFF.</b>	91.7		<b>WK2</b>	1.18					
<b>DE</b>	6307		<b>ODE</b>	6206					
<b>MAG. CUR.</b>	3.4								
<b>INV TYPE</b>	PWM	<b>CHP</b>	60	<b>TO</b>	90	<b>INV TEMP CODE</b>	T3C		
<b>CT</b>	3	<b>TO</b>	60	<b>VT</b>	3	<b>TO</b>	60		
<b>CC</b>	010A	<b>SN</b>							

**AC Induction Motor Performance Data**

Record # 88589

Typical performance - not guaranteed values

<b>Winding:</b> 07WGR568-R001		<b>Type:</b> 0750M		<b>Enclosure:</b> XPFC	
<b>Nameplate Data</b>			<b>575 V, 60 Hz: Single Voltage Motor</b>		
<b>Rated Output (HP)</b>	10	<b>Full Load Torque</b>	29.761 LB-FT		
<b>Volts</b>	575	<b>Start Configuration</b>	direct on line		
<b>Full Load Amps</b>	9.7	<b>Breakdown Torque</b>	81.7523 LB-FT		
<b>R.P.M.</b>	1760	<b>Pull-up Torque</b>	40.21 LB-FT		
<b>Hz</b>	60 <b>Phase</b>	3	<b>Locked-rotor Torque</b>	44.4488 LB-FT	
<b>NEMA Design Code</b>	B <b>KVA Code</b>	H	<b>Starting Current</b>	49.1397 A	
<b>Service Factor (S.F.)</b>	1.15		<b>No-load Current</b>	3.534 A	
<b>NEMA Nom. Eff.</b>	91.7 <b>Power Factor</b>	84	<b>Line-line Res. @ 25°C</b>	1.71 Ω	
<b>Rating - Duty</b>	40C AMB-CONT		<b>Temp. Rise @ Rated Load</b>	37°C	
<b>S.F. Amps</b>			<b>Temp. Rise @ S.F. Load</b>	45°C	
			<b>Locked-rotor Power Factor</b>	35.0711	
			<b>Rotor inertia</b>	1.23 lb-ft <sup>2</sup>	

**Load Characteristics 575 V, 60 Hz, 10 HP**

<b>% of Rated Load</b>	<b>25</b>	<b>50</b>	<b>75</b>	<b>100</b>	<b>125</b>	<b>150</b>	<b>S.F.</b>
<b>Power Factor</b>	51.6312	73.5917	82.7817	86.6494	88.2156	88.5283	88
<b>Efficiency</b>	87.9014	91.4566	92.0057	91.6717	90.9056	89.8466	91.2
<b>Speed</b>	1791.873	1784.043	1775.673	1766.763	1756.953	1746.063	1761
<b>Line amperes</b>	4.173	5.5736	7.3933	9.4389	11.696	14.1382	10.8

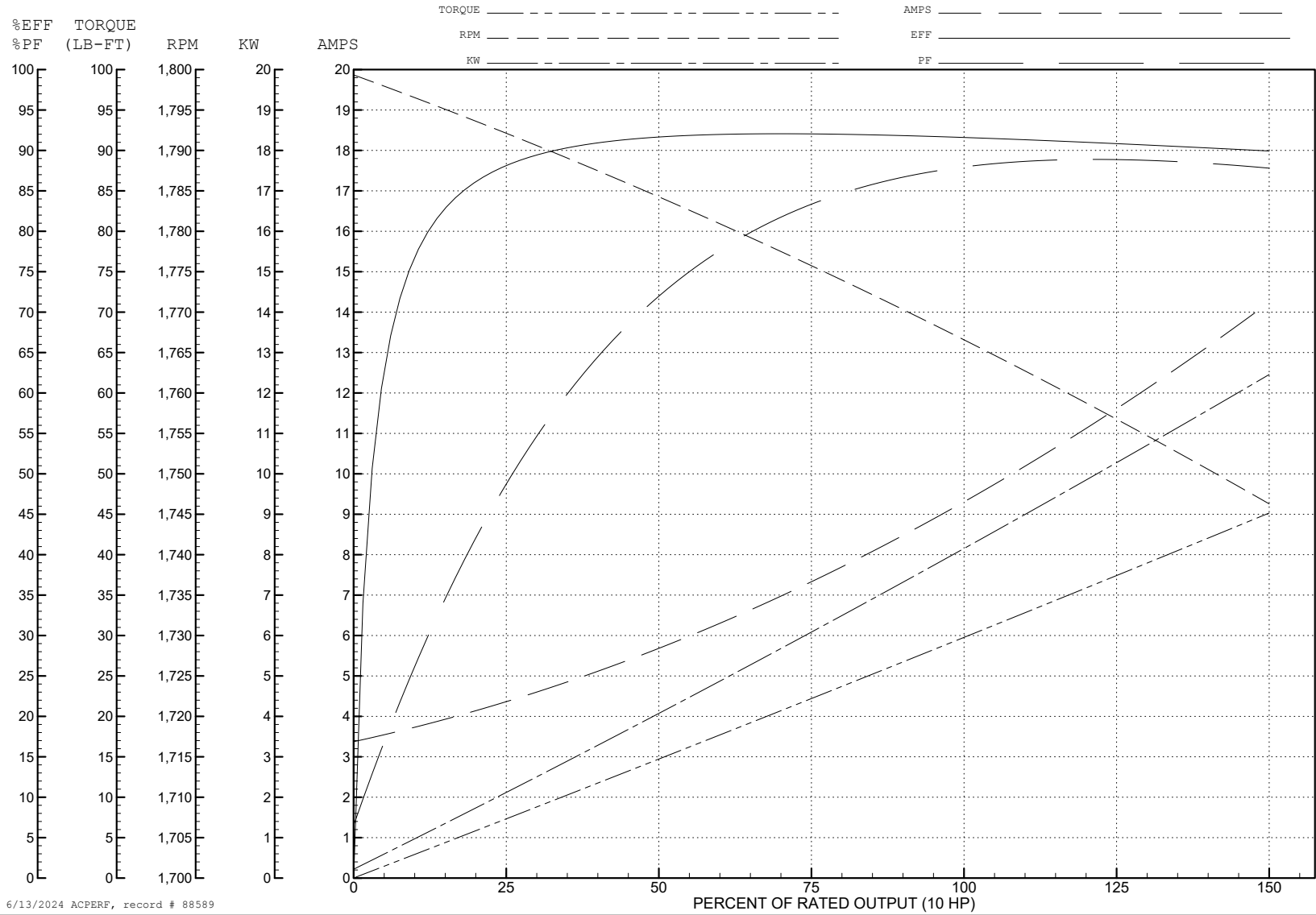
ABB Motors and Mechanical Inc.

WINDING # 07WGR568

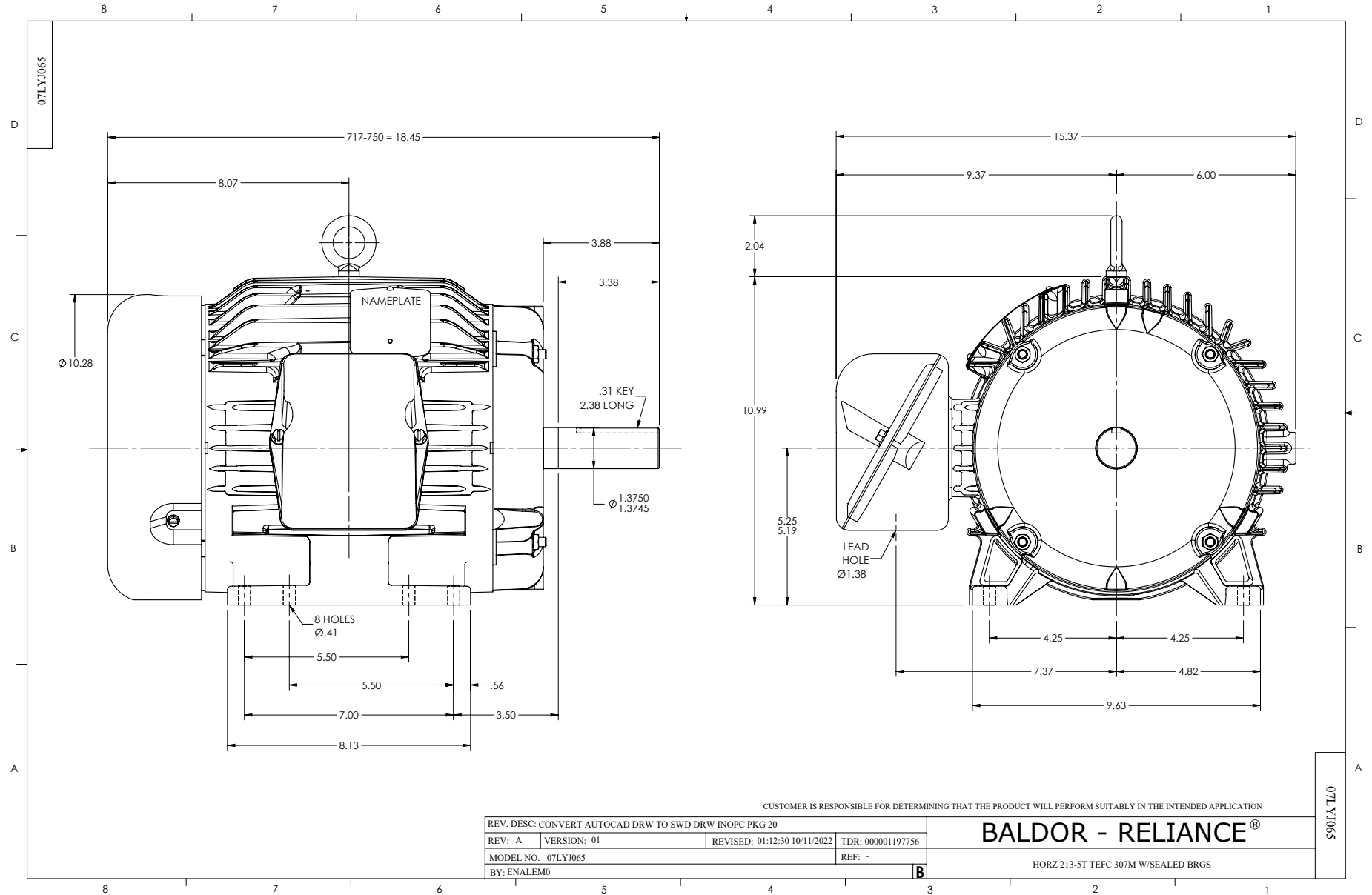
Typical performance - not guaranteed values.

10 HP 3 PH 60 HZ 1760 RPM 575 V 0750M

TORQUES (LB-FT): PO=81.7523 PU=40.21 LR=44.4488 LRA=49.1397



6/13/2024 ACPERF, record # 88589



CD0006



NOTES:

1. THREE LEAD MOTOR MAY BE EITHER WYE CONNECTED OR DELTA CONNECTED.
2. INTERCHANGE ANY TWO LINE LEADS TO REVERSE ROTATION.
3. OPTIONAL THERMOSTATS ARE PROVIDED WHEN SPECIFIED.
4. ACTUAL NUMBER OF INTERNAL PARALLEL CIRCUITS MAY VARY.
5. LEAD COLORS ARE OPTIONAL. LEADS MUST BE NUMBERED AS SHOWN.

CD0006

REV. DESC: ADD CLASS CONN00000007		
REV. LTR: E	VERSION: 01	TDR: 000001099922
FILE: \AAA\00005\141	REVISED: 10:24:49 02/19/2019	BY: ENBRIRO
MTL: -	© □	

**BALDOR - RELIANCE®**

3PH, SV, 3 LEADS, WYE OR DELTA CONNECTED

SH 1 of 1