

BALDOR • RELIANCE

Customer information packet

XT3072T

7.5HP, 3500RPM, 3PH, 60HZ, 213T, 0732M, TEFC, F

Class - CLI GP A,B,C,D

Division - Division II

Specifications

Enclosure	TEFC
Frame	213T
Frame Material	Iron
Frequency	60.00 Hz
Haz Area Class and Group	CL I GP A,B,C,D
Haz Area Division	Division II
Motor Letter Type	Three Phase
Output @ Frequency	7.500 HP @ 60 HZ
Phase	3
Synchronous Speed @ Frequency	3600 RPM @ 60 HZ
Voltage @ Frequency	460.0 V @ 60 HZ 208.0 V @ 60 HZ 230.0 V @ 60 HZ
Agency Approvals	UR CCSA US NEMA_PREMIUM NEMA PREMIUM CSA EEV
Ambient Temperature	40 °C
Auxillary Box	No Auxillary Box
Auxillary Box Lead Termination	None
Base Indicator	Rigid
Bearing Grease Type	Polyrex EM (-20F +300F)
Blower	None
Constant Torque Speed Range	6
Current @ Voltage	17.200 A @ 230.0 V 18.600 A @ 208.0 V 8.600 A @ 460.0 V
Design Code	B
Drip Cover	No Drip Cover
Duty Rating	CONT
Efficiency @ 100% Load	91.0 %

Part detail

Revision	E
Type	AC
Mech. spec.	
Base	
Status	PRD/A
Elec. spec.	07WGY010
Layout	07LYJ065
Eff. date	06-28-2024
CD Diagram	CD0005
Poles	02
Leads	9#14
Proprietary	False
Created date	12-02-2020

Electrically Isolated Bearing	Not Electrically Isolated
Feedback Device	NO FEEDBACK
Haz Area Temp Code	T3C
Heater Indicator	No Heater
High Voltage Full Load Amps	8.6 a
Insulation Class	F
Inverter Code	Inverter Duty
IP Rating	NONE
KVA Code	H
Lifting Lugs	Standard Lifting Lugs
Locked Bearing Indicator	No Locked Bearing
Motor Lead Termination	Flying Leads
Motor Standards	NEMA
Motor Type	0732M
Mounting Arrangement	F1
Number of Poles	2
Overall Length	18.47 IN
Power Factor	88
Product Family	General Purpose
Pulley Face Code	Standard
Rodent Screen	None
Service Factor	1.15
Shaft Diameter	1.375 IN
Shaft Ground Indicator	No Shaft Grounding
Shaft Rotation	Reversible
Speed	3500 rpm
Speed Code	Single Speed
Starting Method	Direct on line
Thermal Device - Bearing	None
Thermal Device - Winding	None
Vibration Sensor Indicator	No Vibration Sensor
Winding Thermal 1	None
Winding Thermal 2	None

Nameplate

NP4163L										
CAT.NO.	XT3072T					I.P.	54			
SPEC.	07-0000-0927					ENCL	TEFC			
FRAME	213T		H.P.	7.5						
VOLTS	208-230/460		P.F.	88						
F.L. AMPS	18.6-17.2/8.6		RATING	40C AMB-CONT						
R.P.M.	3500									
HZ.	60		PH.	3		CLASS	F			
SER.F.	1.15		DES.	B		SL HZ	1.5			
NEMA NOM. EFF.	91		WK2	0.292						
DE	6307		ODE	6206						
MAG. CUR.	5.6/2.8									
INV TYPE	PWM	CHP	60	TO	90	T. CODE	T3C			
CT	6	TO	60	VT	6	TO	60			
CC	010A		SN							
USABLE AT 50 HZ 5HP 190/380V										
14.4/7.2A										

AC Induction Motor Performance Data

Record # 63748

Typical performance - not guaranteed values

Winding: 07WGY010-R026		Type: 0732M		Enclosure: TEFC		
Nameplate Data			460 V, 60 Hz: High Voltage Connection			
Rated Output (HP)	7.5		Full Load Torque	11.1 LB-FT		
Volts	208-230/460		Start Configuration	direct on line		
Full Load Amps	18.6-17.2/8.6		Breakdown Torque	45.1 LB-FT		
R.P.M.	3500		Pull-up Torque	15 LB-FT		
Hz	60	Phase	3	Locked-rotor Torque	21.3 LB-FT	
NEMA Design Code	B		KVA Code	H	Starting Current	61.4 A
Service Factor (S.F.)	1.15		No-load Current	2.75 A		
NEMA Nom. Eff.	91	Power Factor	88	Line-line Res. @ 25°C	1.14 Ω	
Rating - Duty	40C AMB-CONT		Temp. Rise @ Rated Load	41°C		
S.F. Amps			Temp. Rise @ S.F. Load	51°C		
			Locked-rotor Power Factor	31.7		
			Rotor inertia	0.292 LB-FT ²		

Load Characteristics 460 V, 60 Hz, 7.5 HP

% of Rated Load	25	50	75	100	125	150	S.F.
Power Factor	57	78	85	89	89	90	89
Efficiency	86.7	91.2	92.2	91.8	90.9	89.8	91.3
Speed	3579	3558	3536	3510	3484	3454	3494
Line amperes	3.42	4.86	6.63	8.52	10.7	13	9.83

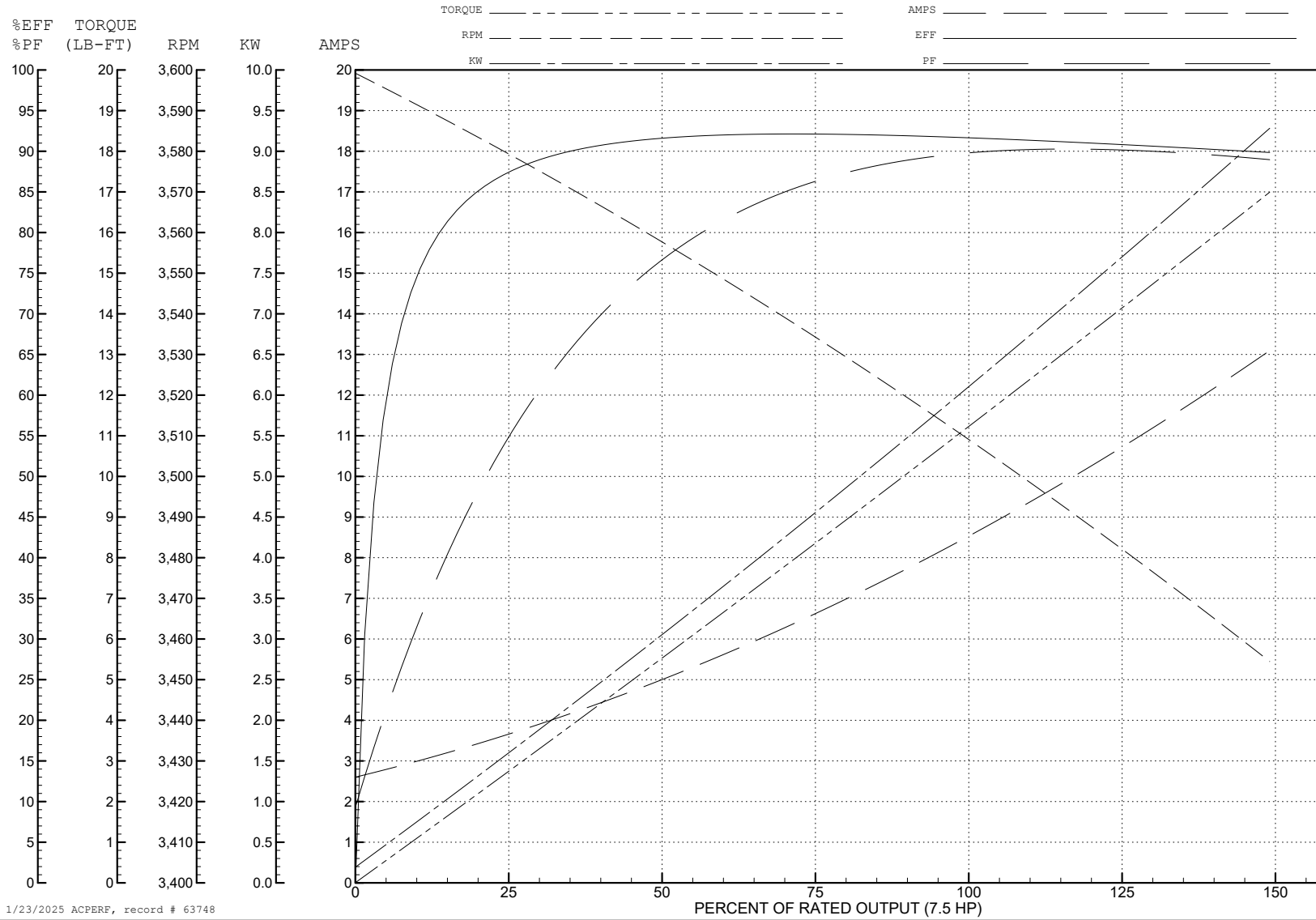
ABB Motors and Mechanical Inc.

WINDING # 07WGY010

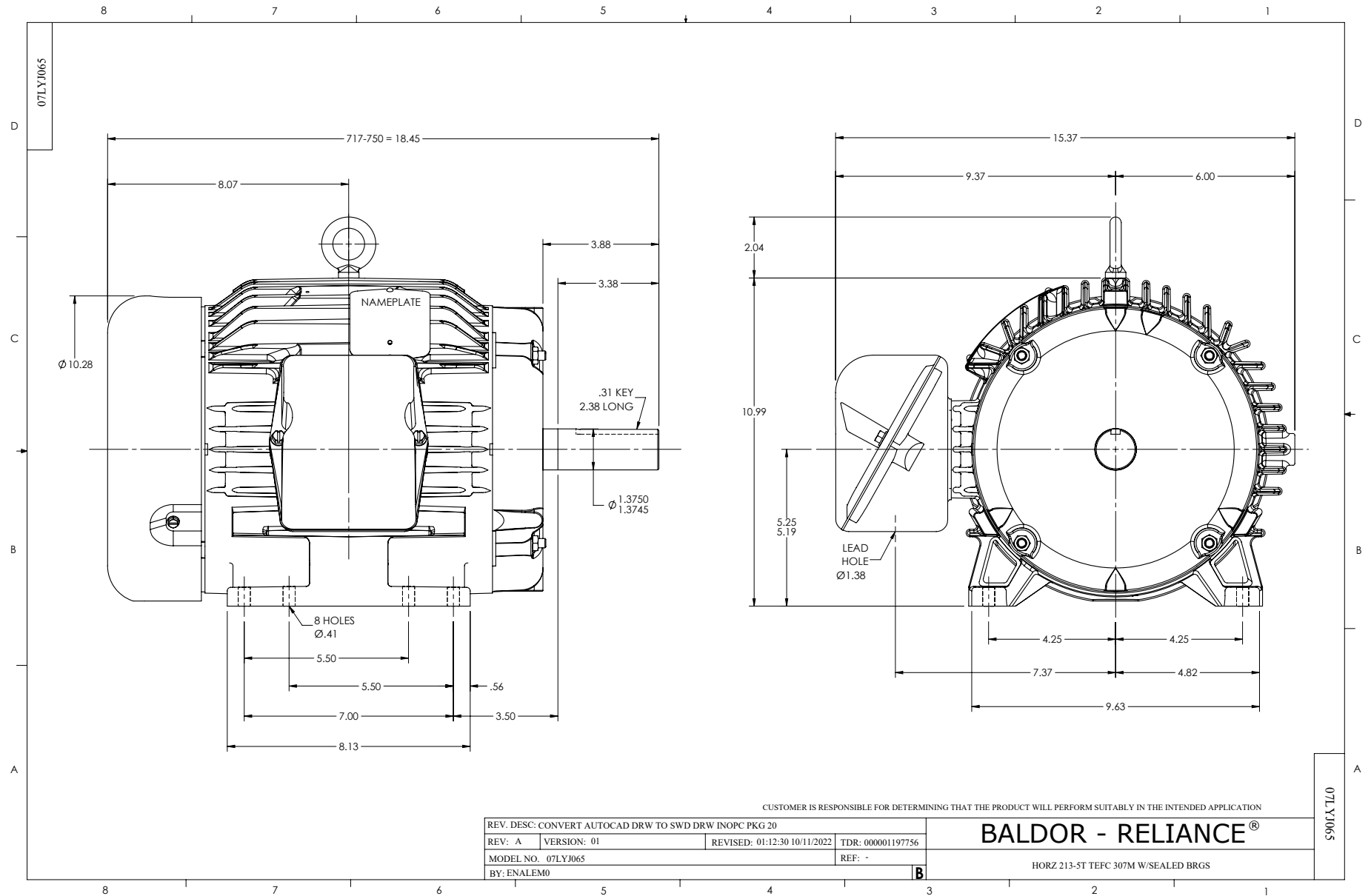
7.5 HP 3 PH 60 HZ 3500 RPM 460 V 0732M

Typical performance - not guaranteed values.

TORQUES (LB-FT): PO=45.1 PU=15 LR=21.3 LRA=61.4



1/23/2025 ACPERF, record # 63748



CD0005

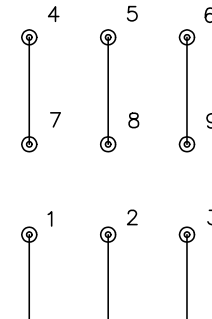


LOW VOLTAGE
(2Y)



LINE

HIGH VOLTAGE
(1Y)



LINE

NOTES:

1. INTERCHANGE ANY TWO LINE LEADS TO REVERSE ROTATION.
2. OPTIONAL THERMOSTATS ARE PROVIDED WHEN SPECIFIED.
3. ACTUAL NUMBER OF INTERNAL PARALLEL CIRCUITS MAY BE A MULTIPLE OF THOSE SHOWN ABOVE.
4. LEAD COLORS ARE OPTIONAL. LEADS MUST ALWAYS BE NUMBERED AS SHOWN.

CD0005

REV. DESC: REVISE TO SHOW OPTIONAL COLORS			
REV. LTR: E	BY: JLP	REVISED: 01/19/99 10:15	TDR: 0171435
S00000		FILE: AAA00005140	MDL: -
		MTL: -	

BALDOR ELECTRIC Co.

3PH, DV, 9 LEADS