



Customer information packet

XT3054T

5HP, 1750RPM, 3PH, 60HZ, 184T, 0642M, TEFC, F1

Class - CLI GP A,B,C,D

Division - Division II

Specifications

Enclosure	TEFC
Frame	184T
Frame Material	Iron
Frequency	60.00 Hz
Haz Area Class and Group	CLI GP A,B,C,D
Haz Area Division	Division II
Motor Letter Type	Three Phase
Output @ Frequency	5.000 HP @ 60 HZ
Phase	3
Synchronous Speed @ Frequency	1800 RPM @ 60 HZ
Voltage @ Frequency	460.0 V @ 60 HZ 208.0 V @ 60 HZ 230.0 V @ 60 HZ
Agency Approvals	UR CCSA US NEMA_PREMIUM NEMA PREMIUM CSA EEV
Ambient Temperature	40 °C
Auxillary Box	No Auxillary Box
Auxillary Box Lead Termination	None
Base Indicator	Rigid
Bearing Grease Type	Polyrex EM (-20F +300F)
Blower	None
Constant Torque Speed Range	3
Current @ Voltage	13.000 A @ 230.0 V 14.000 A @ 208.0 V 6.500 A @ 460.0 V
Design Code	B
Drip Cover	No Drip Cover
Duty Rating	CONT
Efficiency @ 100% Load	89.5 %

Part detail

Revision	G
Type	AC
Mech. spec.	
Base	
Status	PRD/A
Elec. spec.	06WGX182
Layout	06LYF436
Eff. date	06-28-2024
CD Diagram	CD0005
Poles	04
Leads	9#16
Proprietary	False
Created date	09-04-2020

Electrically Isolated Bearing	Not Electrically Isolated
Feedback Device	NO FEEDBACK
Haz Area Temp Code	T3C
Heater Indicator	No Heater
High Voltage Full Load Amps	6.5 a
Insulation Class	F
Inverter Code	Inverter Duty
IP Rating	NONE
KVA Code	J
Lifting Lugs	Standard Lifting Lugs
Locked Bearing Indicator	No Locked Bearing
Max Speed	2700 rpm
Motor Lead Termination	Flying Leads
Motor Standards	NEMA
Motor Type	0642M
Mounting Arrangement	F1
Number of Poles	4
Overall Length	15.23 IN
Power Factor	79
Product Family	General Purpose
Pulley Face Code	Standard
Rodent Screen	None
Service Factor	1.15
Shaft Diameter	1.125 IN
Shaft Ground Indicator	No Shaft Grounding
Shaft Rotation	Reversible
Speed	1750 rpm
Speed Code	Single Speed
Starting Method	Direct on line
Thermal Device - Bearing	None
Thermal Device - Winding	None
Vibration Sensor Indicator	No Vibration Sensor
Winding Thermal 1	None
Winding Thermal 2	None

Nameplate

NP4163L									
CAT.NO.	XT3054T				I.P.	54			
SPEC.	06-0000-0763				ENCL	TEFC			
FRAME	184T	H.P.	5						
VOLTS	208-230/460		P.F.	79					
F.L. AMPS	14-13/6.5		RATING	40C AMB-CONT					
R.P.M.	1750								
HZ.	60	PH.	3	CLASS	F				
SER.F.	1.15	DES.	B	SL HZ	1.7				
NEMA NOM. EFF.	89.5	WK2	0.39						
DE	6206	ODE	6205						
MAG. CUR.	6.4/3.2								
INV TYPE	PWM	CHP	60	TO	90	T. CODE	T3C		
CT	3	TO	60	VT	3	TO	60		
CC	010A	SN							
	USABLE AT 50 HZ 3 HP 190/380V								
	10/5A								

AC Induction Motor Performance Data

Record # 84601

Typical performance - not guaranteed values

Winding: 06WGX182-R028		Type: 0642M		Enclosure: TEFC	
Nameplate Data			460 V, 60 Hz: High Voltage Connection		
Rated Output (HP)		5	Full Load Torque		15 LB-FT
Volts		208-230/460	Start Configuration		direct on line
Full Load Amps		14-13/6.5	Breakdown Torque		53.9 LB-FT
R.P.M.		1750	Pull-up Torque		22.4 LB-FT
Hz	60 Phase	3	Locked-rotor Torque		31.8 LB-FT
NEMA Design Code	B KVA Code	J	Starting Current		46.6 A
Service Factor (S.F.)		1	No-load Current		3.02 A
NEMA Nom. Eff.	89.5 Power Factor	79	Line-line Res. @ 25°C		2.63 Ω
Rating - Duty		40C AMB-CONT	Temp. Rise @ Rated Load		53°C
			Locked-rotor Power Factor		40.5
			Rotor inertia		0.391 lb-ft ²

Load Characteristics 460 V, 60 Hz, 5 HP

% of Rated Load	25	50	75	100
Power Factor	41	63	75	81
Efficiency	85.1	89.7	90.3	89.8
Speed	1789	1777	1765	1752
Line amperes	3.35	4.14	5.21	6.45

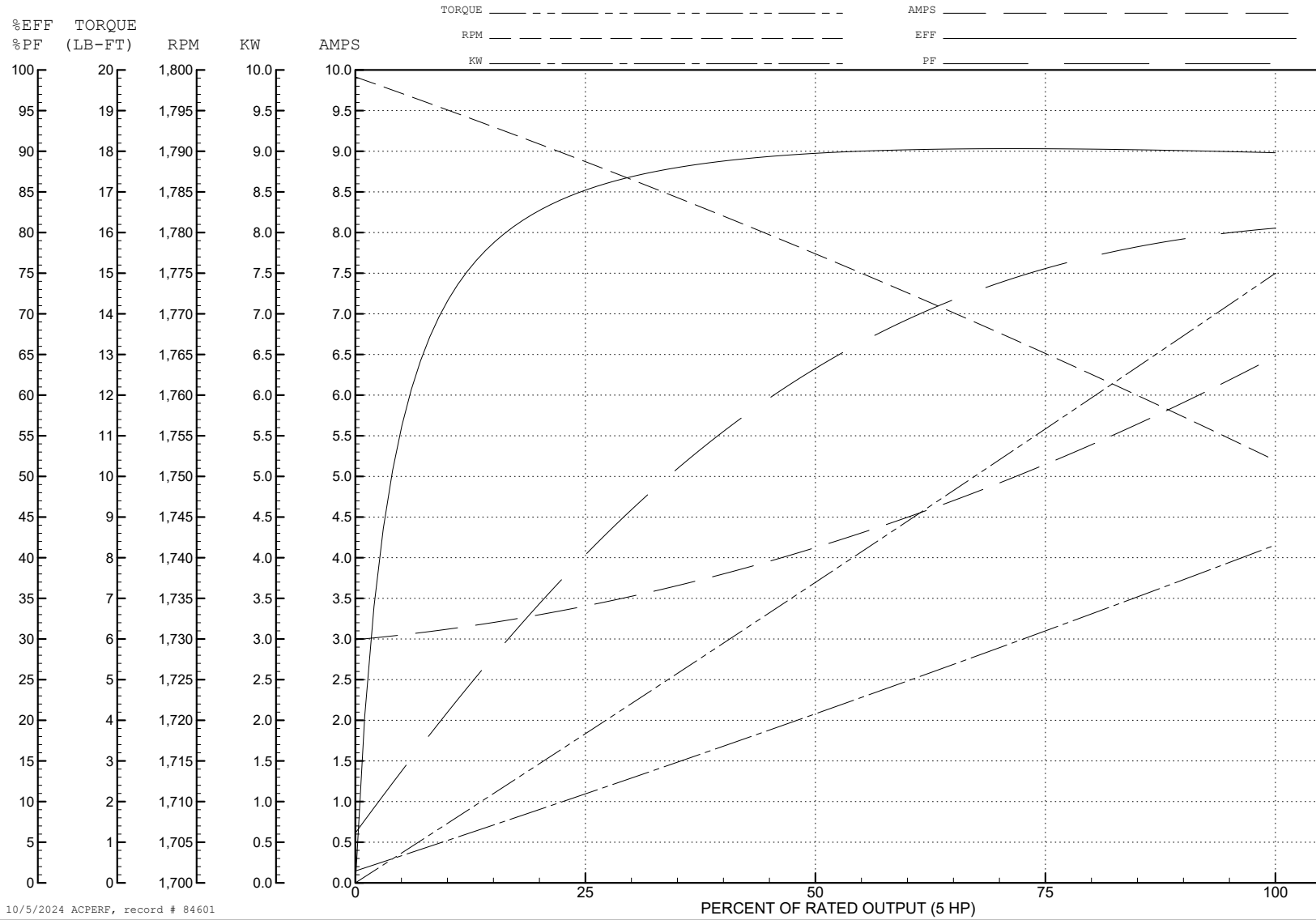
ABB Motors and Mechanical Inc.

WINDING # 06WGX182

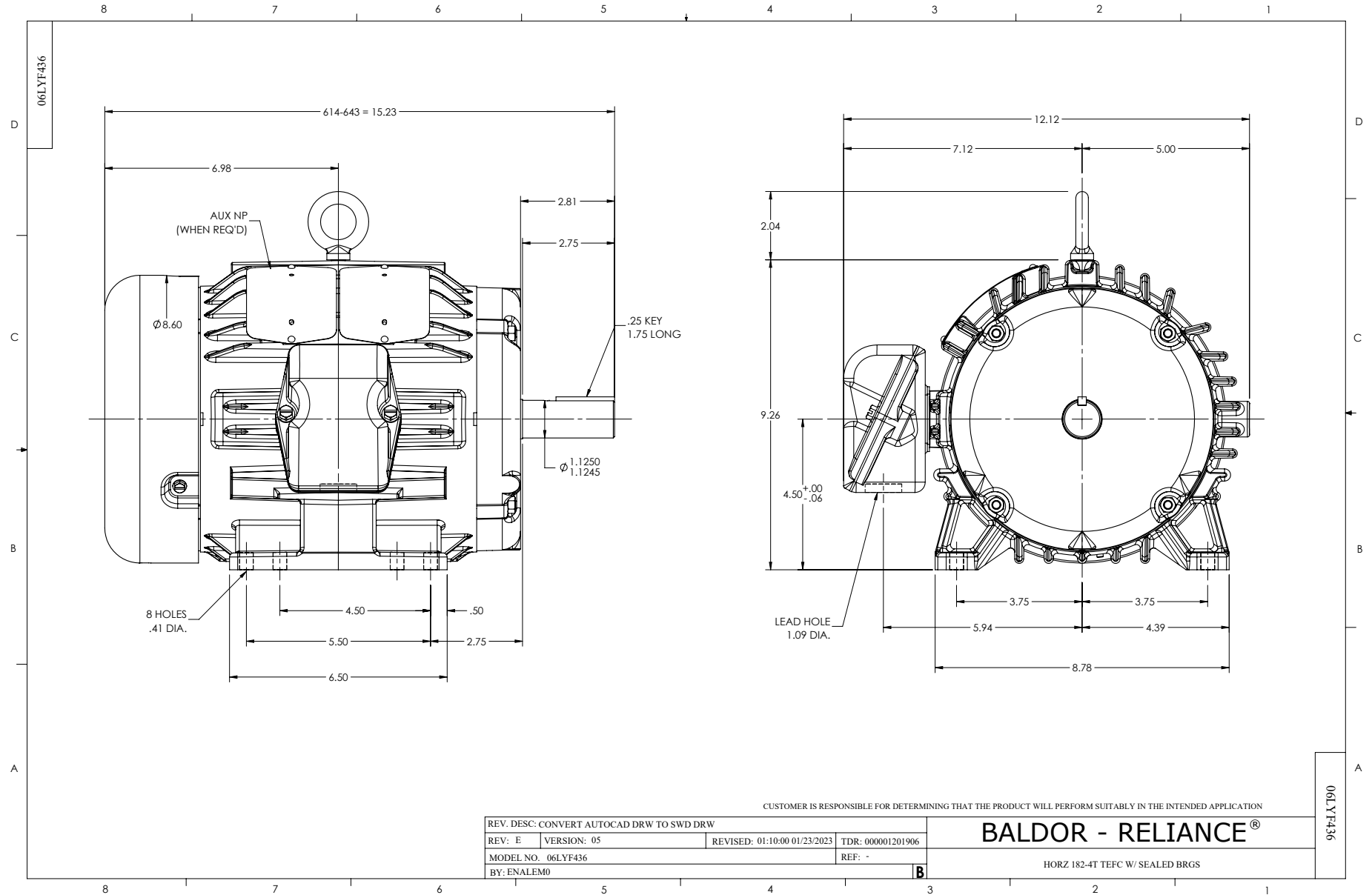
Typical performance - not guaranteed values.

5 HP 3 PH 60 HZ 1750 RPM 460 V 0642M

TORQUES (LB-FT): PO=53.9 PU=22.4 LR=31.8 LRA=46.6



10/5/2024 ACPERF, record # 84601



CD0005



LOW VOLTAGE
(2Y)



LINE

HIGH VOLTAGE
(1Y)



LINE

NOTES:

1. INTERCHANGE ANY TWO LINE LEADS TO REVERSE ROTATION.
2. OPTIONAL THERMOSTATS ARE PROVIDED WHEN SPECIFIED.
3. ACTUAL NUMBER OF INTERNAL PARALLEL CIRCUITS MAY BE A MULTIPLE OF THOSE SHOWN ABOVE.
4. LEAD COLORS ARE OPTIONAL. LEADS MUST ALWAYS BE NUMBERED AS SHOWN.

CD0005

REV. DESC: REVISE TO SHOW OPTIONAL COLORS			
REV. LTR: E	BY: JLP	REVISED: 01/19/99 10:15	TDR: 0171435
S00000		FILE: AAA00005140	MDL: -
		MTL: -	

BALDOR ELECTRIC Co.

3PH, DV, 9 LEADS