



Customer information packet

XT3032T

3HP, 3500RPM, 3PH, 60HZ, 182T, 0628M, TEFC, F1

Class - CLI GP A,B,C,D

Division - Division II

Specifications

Enclosure	TEFC
Frame	182T
Frame Material	Iron
Frequency	60.00 Hz
Haz Area Class and Group	CL I GP A,B,C,D
Haz Area Division	Division II
Motor Letter Type	Three Phase
Output @ Frequency	3.000 HP @ 60 HZ
Phase	3
Synchronous Speed @ Frequency	3600 RPM @ 60 HZ
Voltage @ Frequency	460.0 V @ 60 HZ 208.0 V @ 60 HZ 230.0 V @ 60 HZ
Agency Approvals	UR CCSA US NEMA_PREMIUM NEMA PREMIUM CSA EEV
Ambient Temperature	40 °C
Auxillary Box	No Auxillary Box
Auxillary Box Lead Termination	None
Base Indicator	Rigid
Bearing Grease Type	Polyrex EM (-20F +300F)
Blower	None
Constant Torque Speed Range	6
Current @ Voltage	3.400 A @ 460.0 V 6.800 A @ 230.0 V 7.600 A @ 208.0 V
Design Code	B
Drip Cover	No Drip Cover
Duty Rating	CONT
Efficiency @ 100% Load	88.5 %

Part detail

Revision	B
Type	AC
Mech. spec.	
Base	
Status	PRD/A
Elec. spec.	06WGW036
Layout	06LYF436
Eff. date	06-28-2024
CD Diagram	CD0005
Poles	02
Leads	9#16
Proprietary	False
Created date	12-01-2020

Electrically Isolated Bearing	Not Electrically Isolated
Feedback Device	NO FEEDBACK
Haz Area Temp Code	T3C
Heater Indicator	No Heater
High Voltage Full Load Amps	3.4 a
Insulation Class	F
Inverter Code	Inverter Duty
IP Rating	NONE
KVA Code	L
Lifting Lugs	Standard Lifting Lugs
Locked Bearing Indicator	No Locked Bearing
Motor Lead Termination	Flying Leads
Motor Standards	NEMA
Motor Type	0628M
Mounting Arrangement	F1
Number of Poles	2
Overall Length	15.23 IN
Power Factor	92
Product Family	General Purpose
Pulley Face Code	Standard
Rodent Screen	None
Service Factor	1.15
Shaft Diameter	1.125 IN
Shaft Ground Indicator	No Shaft Grounding
Shaft Rotation	Reversible
Speed	3500 rpm
Speed Code	Single Speed
Starting Method	Direct on line
Thermal Device - Bearing	None
Thermal Device - Winding	None
Vibration Sensor Indicator	No Vibration Sensor
Winding Thermal 1	None
Winding Thermal 2	None

Nameplate

NP4163L									
CAT.NO.	XT3032T				I.P.	54			
SPEC.	06-0000-0801				ENCL	TEFC			
FRAME	182T	H.P.	3						
VOLTS	208-230/460		P.F.	92					
F.L. AMPS	7.6-6.8/3.4		RATING	40C AMB-CONT					
R.P.M.	3500								
HZ.	60	PH.	3	CLASS	F				
SER.F.	1.15	DES.	B	SL HZ	1.8				
NEMA NOM. EFF.	88.5	WK2	0.13						
DE	6206	ODE	6205						
MAG. CUR.	2/1								
INV TYPE	PWM	CHP	60	TO	90	T. CODE	T3C		
CT	6	TO	60	VT	6	TO	60		
CC	010A	SN							
USABLE AT 50 HZ 2.5HP 190/380V									
7/3.5A									

AC Induction Motor Performance Data

Record # 42090

Typical performance - not guaranteed values

Winding: 06WGW036-R016		Type: 0628M	Enclosure: TEFC	
Nameplate Data			460 V, 60 Hz: High Voltage Connection	
Rated Output (HP)	3	Full Load Torque	4.5 LB-FT	
Volts	208-230/460	Start Configuration	direct on line	
Full Load Amps	7.6-6.8/3.4	Breakdown Torque	23.3 LB-FT	
R.P.M.	3500	Pull-up Torque	15.2 LB-FT	
Hz	60 Phase	Locked-rotor Torque	16 LB-FT	
NEMA Design Code	B KVA Code	Starting Current	32 A	
Service Factor (S.F.)	1.15	No-load Current	1.06 A	
NEMA Nom. Eff.	88.5 Power Factor	Line-line Res. @ 25°C	3.92 Ω	
Rating - Duty	40C AMB-CONT	Temp. Rise @ Rated Load	32°C	
S.F. Amps	8.6-7.6/3.8	Temp. Rise @ S.F. Load	38°C	
		Locked-rotor Power Factor	44	
		Rotor inertia	0.126 LB-FT ²	

Load Characteristics 460 V, 60 Hz, 3 HP

% of Rated Load	25	50	75	100	125	150	S.F.
Power Factor	65	83	89	92	94	95	93
Efficiency	80.9	87.5	89.1	89.3	88.9	88.2	89.1
Speed	3577	3556	3534	3509	3487	3467	3500
Line amperes	1.39	1.96	2.66	3.4	4.12	4.79	3.83

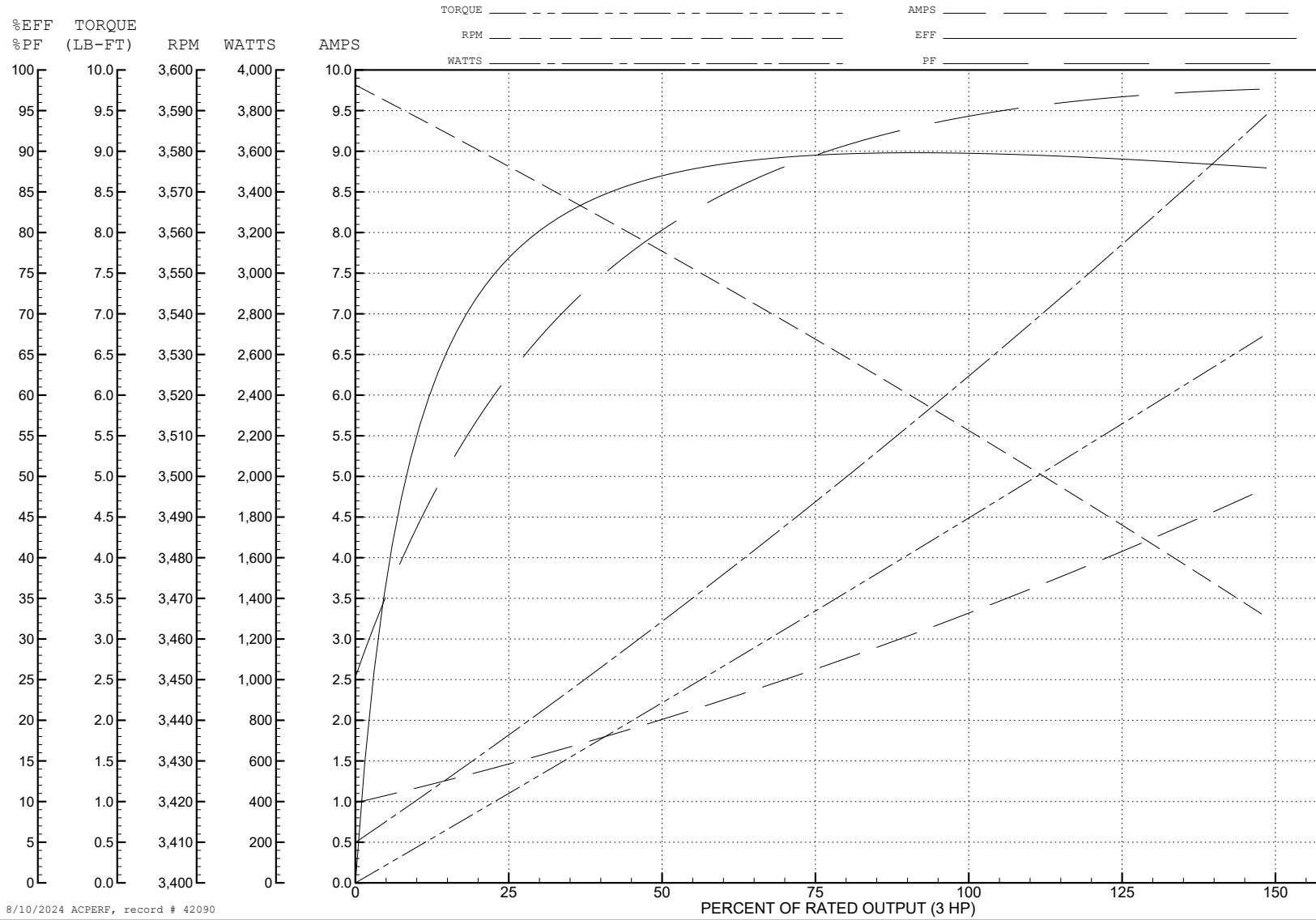
ABB Motors and Mechanical Inc.

WINDING # 06WGW036

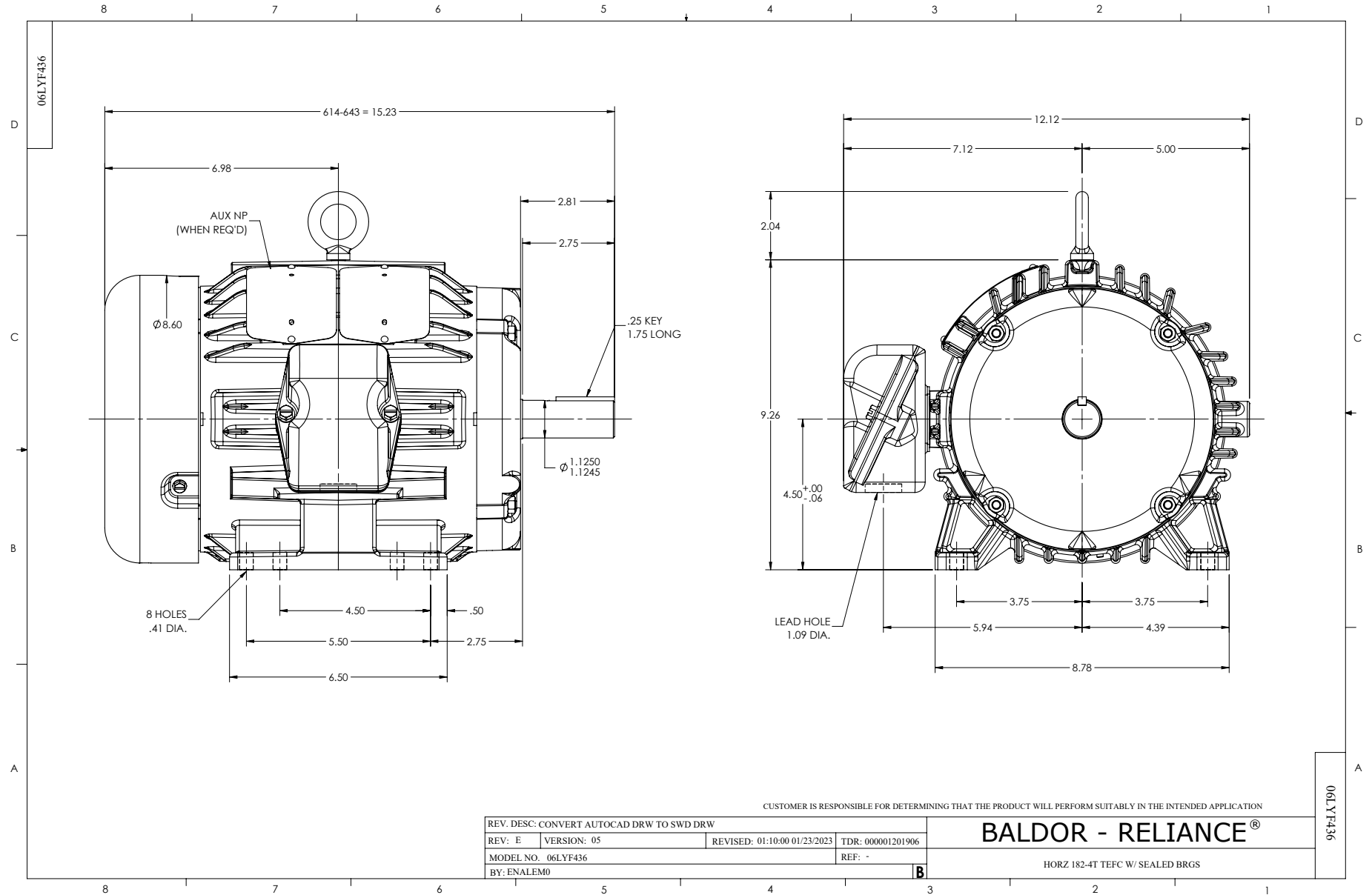
3 HP 3 PH 60 HZ 3500 RPM 460 V 0628M

Typical performance - not guaranteed values.

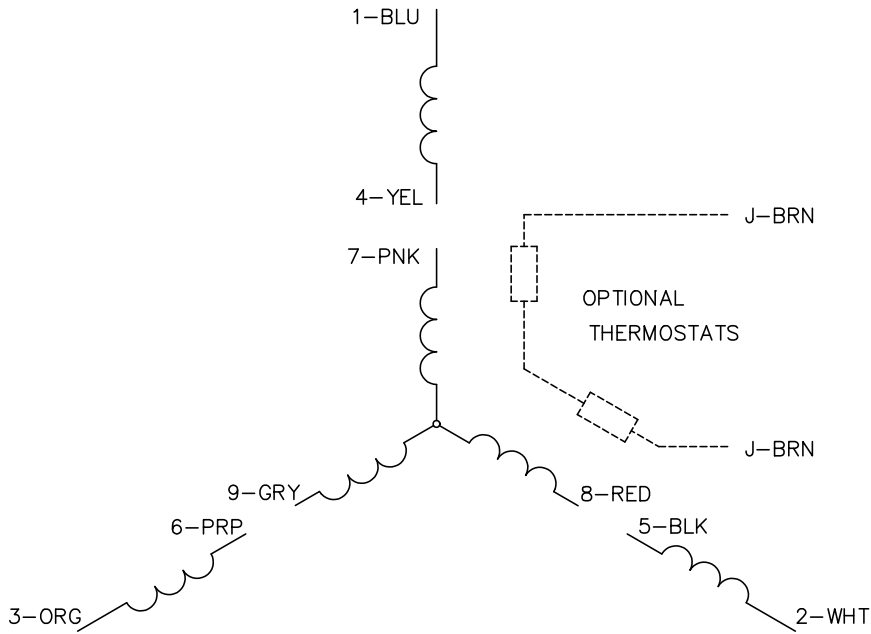
TORQUES (LB-FT): PO=23.3 PU=15.2 LR=16 LRA=32



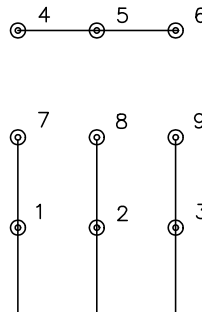
8/10/2024 ACPERF, record # 42090



CD0005

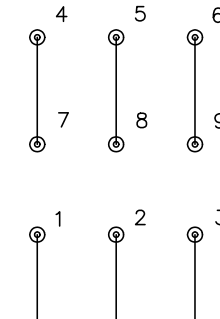


LOW VOLTAGE
(2Y)



LINE

HIGH VOLTAGE
(1Y)



LINE

NOTES:

1. INTERCHANGE ANY TWO LINE LEADS TO REVERSE ROTATION.
2. OPTIONAL THERMOSTATS ARE PROVIDED WHEN SPECIFIED.
3. ACTUAL NUMBER OF INTERNAL PARALLEL CIRCUITS MAY BE A MULTIPLE OF THOSE SHOWN ABOVE.
4. LEAD COLORS ARE OPTIONAL. LEADS MUST ALWAYS BE NUMBERED AS SHOWN.

CD0005

REV. DESC: REVISE TO SHOW OPTIONAL COLORS			
REV. LTR: E	BY: JLP	REVISED: 01/19/99 10:15	TDR: 0171435
S00000		FILE: AAA00005140	MDL: -
		MTL: -	

BALDOR ELECTRIC Co.

3PH, DV, 9 LEADS