



Customer information packet

XT3016T-5

1HP, 1160RPM, 3PH, 60HZ, 145T, 0526M, TEFC, F1

Class - CLI GP A,B,C,D

Division - Division II

Specifications

| | |
|--------------------------------|--|
| Enclosure | TEFC |
| Frame | 145T |
| Frame Material | Iron |
| Frequency | 60.00 Hz |
| Haz Area Class and Group | CLI GP A,B,C,D |
| Haz Area Division | Division II |
| Motor Letter Type | Three Phase |
| Output @ Frequency | 1.000 HP @ 60 HZ |
| Phase | 3 |
| Synchronous Speed @ Frequency | 1200 RPM @ 60 HZ |
| Voltage @ Frequency | 575.0 V @ 60 HZ |
| Agency Approvals | UR NEMA_PREMIUM NEMA PREMIUM CSA EEV CCSA US |
| Ambient Temperature | 40 °C |
| Auxillary Box | No Auxillary Box |
| Auxillary Box Lead Termination | None |
| Base Indicator | Rigid |
| Bearing Grease Type | Polyrex EM (-20F +300F) |
| Blower | None |
| Constant Torque Speed Range | 3 |
| Current @ Voltage | 1.400 A @ 575.0 V |
| Design Code | B |
| Drip Cover | No Drip Cover |
| Duty Rating | CONT |
| Efficiency @ 100% Load | 82.5 % |
| Electrically Isolated Bearing | Not Electrically Isolated |
| Feedback Device | NO FEEDBACK |
| Haz Area Temp Code | T4 |
| Heater Indicator | No Heater |

Part detail

| | |
|--------------|--------------|
| Revision | A |
| Type | AC |
| Mech. spec. | |
| Base | |
| Status | PRD/A |
| Elec. spec. | 05WGX083 |
| Layout | 05LY-000-377 |
| Eff. date | 09-19-2022 |
| CD Diagram | CD0006 |
| Poles | 06 |
| Leads | 3#18 |
| Proprietary | False |
| Created date | 05-26-2021 |

| | |
|------------------------------------|---------------------|
| High Voltage Full Load Amps | 1.4 a |
| Insulation Class | F |
| Inverter Code | Inverter Duty |
| IP Rating | NONE |
| KVA Code | K |
| Lifting Lugs | No Lifting Lugs |
| Locked Bearing Indicator | No Locked Bearing |
| Motor Lead Termination | Flying Leads |
| Motor Standards | NEMA |
| Motor Type | 0526M |
| Mounting Arrangement | F1 |
| Number of Poles | 6 |
| Overall Length | 12.54 IN |
| Power Factor | 63 |
| Product Family | General Purpose |
| Pulley Face Code | Standard |
| Rodent Screen | None |
| Service Factor | 1.00 |
| Shaft Diameter | 0.875 IN |
| Shaft Ground Indicator | No Shaft Grounding |
| Shaft Rotation | Reversible |
| Speed | 1160 rpm |
| Speed Code | Single Speed |
| Starting Method | Direct on line |
| Thermal Device - Bearing | None |
| Thermal Device - Winding | None |
| Vibration Sensor Indicator | No Vibration Sensor |
| Winding Thermal 1 | None |
| Winding Thermal 2 | None |

Nameplate

| NP4224L | | | | | | | | | |
|-----------------------|----------------------|-------------|-----------------------|--------------|----------------|----------------------|----|--|--|
| CAT.NO. | XT3016T-5 | | | | I.P. | 54 | | | |
| SPEC. | 05-0000-0994 | | | | ENCL | TEFC | | | |
| FRAME | 145T | H.P. | 1 | | T. CODE | T4 | | | |
| VOLTS | 575 | | P.F. | 63 | | | | | |
| F.L. AMPS | 1.4 | | RATING | 40C AMB-CONT | | | | | |
| R.P.M. | 1160 | | USABLE AT 208V | N/A | | | | | |
| HZ. | 60 | PH. | 3 | CLASS | F | | | | |
| SER.F. | 1.00 | | DES. | B | SL HZ | 2 | | | |
| NEMA NOM. EFF. | 82.5 | | WK2 | 0.16 | | | | | |
| DE | 6205 | | ODE | 6203 | | | | | |
| MAG. CUR. | 1 | | | | | | | | |
| INV TYPE | PWM | CHP | 60 | TO | 90 | INV TEMP CODE | T4 | | |
| CT | 3 | TO | 60 | VT | 3 | TO | 60 | | |
| CC | 010A | | SN | | | | | | |
| | 1.15 SF ON SINE WAVE | | | | | | | | |

AC Induction Motor Performance Data

Record # 46216

Typical performance - not guaranteed values

| Winding: 05WGX083-R001 | | Type: 0526M | | Enclosure: XPFC | |
|-------------------------------|--------------------------|----------------------------|---|--------------------------|--|
| Nameplate Data | | | 575 V, 60 Hz: Single Voltage Motor | | |
| Rated Output (HP) | 1 | Full Load Torque | 4.48 LB-FT | | |
| Volts | 575 | Start Configuration | direct on line | | |
| Full Load Amps | 1.4 | Breakdown Torque | 15.4 LB-FT | | |
| R.P.M. | 1160 | Pull-up Torque | 9.79 LB-FT | | |
| Hz | 60 Phase | 3 | Locked-rotor Torque | 12 LB-FT | |
| NEMA Design Code | B KVA Code | K | Starting Current | 8.96 A | |
| Service Factor (S.F.) | | 1 | No-load Current | 0.972 A | |
| NEMA Nom. Eff. | 82.5 Power Factor | 63 | Line-line Res. @ 25°C | 24.8 Ω | |
| Rating - Duty | | 40C AMB-CONT | Temp. Rise @ Rated Load | 30°C | |
| | | | Rotor inertia | 0.155 LB-FT ² | |

Load Characteristics 575 V, 60 Hz, 1 HP

| % of Rated Load | 25 | 50 | 75 | 100 | 125 | 150 |
|------------------------|-----------|-----------|-----------|------------|------------|------------|
| Power Factor | 26 | 42 | 55 | 63 | 69 | 73 |
| Efficiency | 69.5 | 80.2 | 83 | 83.5 | 82.7 | 81.2 |
| Speed | 1191 | 1182 | 1172 | 1163 | 1151 | 1136 |
| Line amperes | 1.01 | 1.11 | 1.25 | 1.41 | 1.63 | 1.9 |

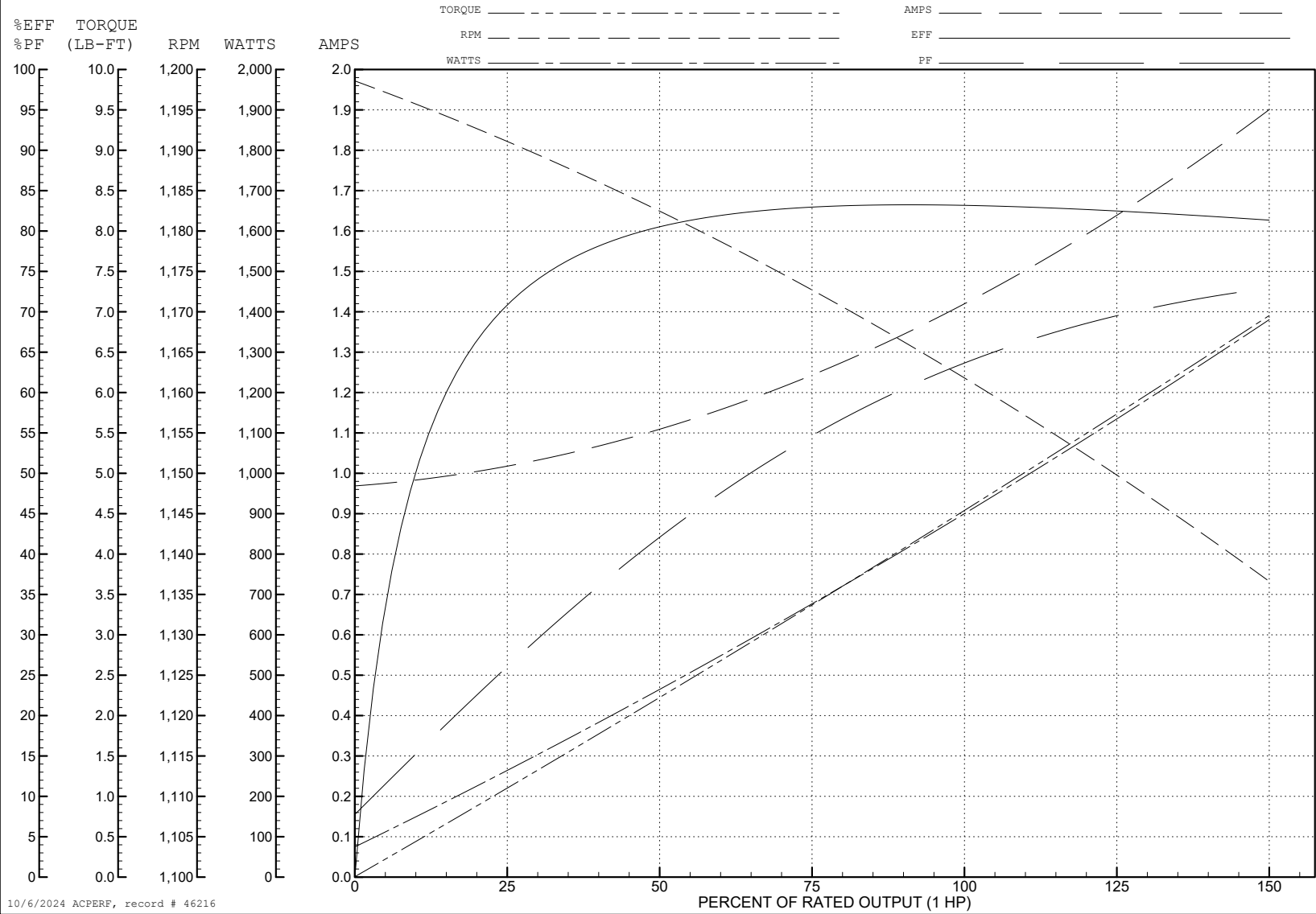
ABB Motors and Mechanical Inc.

WINDING # 05WGX083

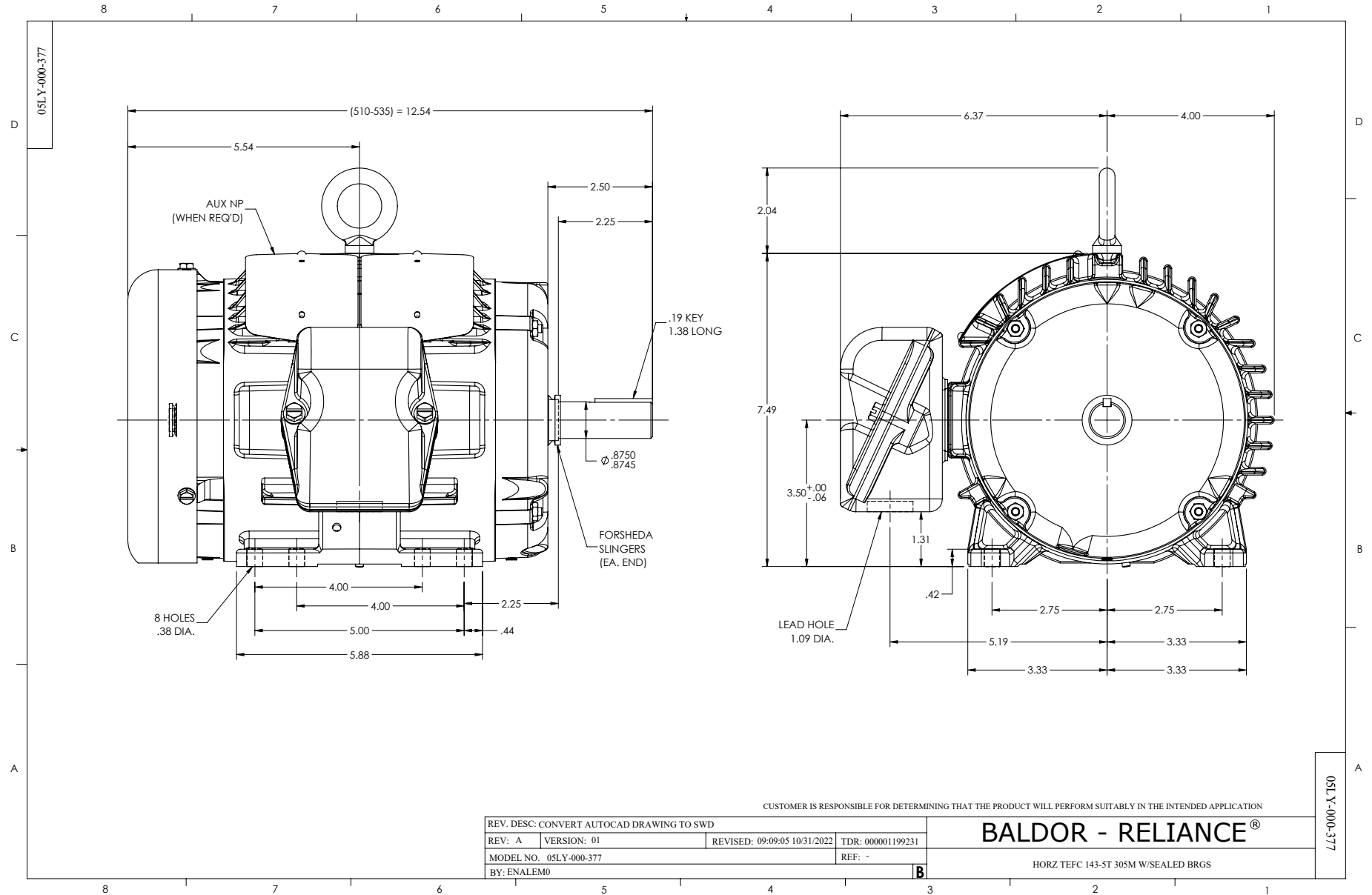
Typical performance - not guaranteed values.

1 HP 3 PH 60 HZ 1160 RPM 575 V 0526M

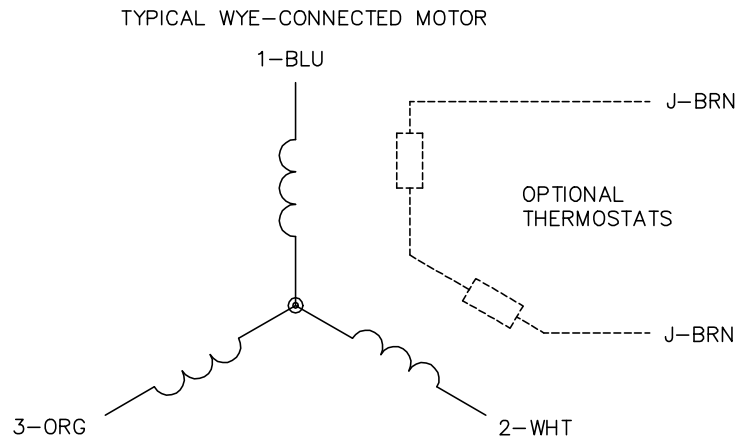
TORQUES (LB-FT): PO=15.4 PU=9.79 LR=12 LRA=8.96



10/6/2024 ACPERF, record # 46216



CD0006



NOTES:

1. THREE LEAD MOTOR MAY BE EITHER WYE CONNECTED OR DELTA CONNECTED.
2. INTERCHANGE ANY TWO LINE LEADS TO REVERSE ROTATION.
3. OPTIONAL THERMOSTATS ARE PROVIDED WHEN SPECIFIED.
4. ACTUAL NUMBER OF INTERNAL PARALLEL CIRCUITS MAY VARY.
5. LEAD COLORS ARE OPTIONAL. LEADS MUST BE NUMBERED AS SHOWN.

CD0006

| | | |
|-----------------------------------|------------------------------|-------------------|
| REV. DESC: ADD CLASS CONN00000007 | | |
| REV. LTR: E | VERSION: 01 | TDR: 000001099922 |
| FILE: \AAA\00005\141 | REVISED: 10:24:49 02/19/2019 | BY: ENBRIRO |
| MTL: - | © □ | |

BALDOR - RELIANCE®

3PH, SV, 3 LEADS, WYE OR DELTA CONNECTED

SH 1 of 1