



Customer information packet

XT30154T

1.5HP, 1770RPM, 3PH, 60HZ, 143T, 0524M, TEFC, F
Class - CLI GP A,B,C,D
Division - Division II

Specifications

| | |
|--------------------------------|---|
| Enclosure | TEFC |
| Frame | 143T |
| Frame Material | Iron |
| Frequency | 60.00 Hz |
| Haz Area Class and Group | CL I GP A,B,C,D |
| Haz Area Division | Division II |
| Motor Letter Type | Three Phase |
| Output @ Frequency | 1.500 HP @ 60 HZ |
| Phase | 3 |
| Synchronous Speed @ Frequency | 1800 RPM @ 60 HZ |
| Voltage @ Frequency | 460.0 V @ 60 HZ 230.0 V @ 60 HZ |
| Agency Approvals | CCSA US CSA EEV NEMA PREMIUM UR |
| Ambient Temperature | 50 °C |
| Auxillary Box | No Auxillary Box |
| Auxillary Box Lead Termination | None |
| Base Indicator | Rigid |
| Bearing Grease Type | Polyrex EM (-20F +300F) |
| Blower | None |
| Constant Torque Speed Range | 3 |
| Current @ Voltage | 4.640 A @ 208.0 V 4.600 A @ 230.0 V 2.300 A @ 460.0 V |
| Design Code | B |
| Drip Cover | No Drip Cover |
| Duty Rating | CONT |
| Efficiency @ 100% Load | 86.5 % |
| Electrically Isolated Bearing | Not Electrically Isolated |
| Feedback Device | NO FEEDBACK |

Part detail

| | |
|--------------|--------------|
| Revision | - |
| Type | AC |
| Mech. spec. | 05E647 |
| Base | |
| Status | PRD/A |
| Elec. spec. | 05WGX510 |
| Layout | 05LY-000-377 |
| Eff. date | 06-22-2023 |
| CD Diagram | CD0005 |
| Poles | 04 |
| Leads | 9#18 |
| Proprietary | False |
| Created date | 04-13-2023 |

| | |
|-------------------------------|-----------------------|
| Front Shaft Indicator | None |
| Haz Area Temp Code | T4 |
| Heater Indicator | No Heater |
| High Voltage Full Load Amps | 2.3 a |
| Insulation Class | H |
| Inverter Code | Inverter Duty |
| KVA Code | M |
| Lifting Lugs | Standard Lifting Lugs |
| Locked Bearing Indicator | No Locked Bearing |
| Motor Lead Quantity/Wire Size | 9 @ 18 AWG |
| Motor Lead Termination | Flying Leads |
| Motor Standards | NEMA |
| Motor Type | 0524M |
| Mounting Arrangement | F1 |
| Number of Poles | 4 |
| Overall Length | 12.54 IN |
| Power Factor | 72 |
| Product Family | General Purpose |
| Pulley End Bearing Type | Sealed Bearing |
| Pulley Face Code | Standard |
| Pulley Shaft Indicator | Standard |
| Rodent Screen | None |
| Service Factor | 1.00 |
| Shaft Diameter | 0.875 IN |
| Shaft Ground Indicator | No Shaft Grounding |
| Shaft Rotation | Reversible |
| Speed | 1770 rpm |
| Speed Code | Single Speed |
| Starting Method | Direct on line |
| Thermal Device - Bearing | None |
| Thermal Device - Winding | None |
| Vibration Sensor Indicator | No Vibration Sensor |
| Winding Thermal 1 | None |
| Winding Thermal 2 | None |

Nameplate

| NP4163L | | | | | | | | | | |
|-----------------------|-----------------|------------|---------------|--------------|-----------|--------------|------|----------------|----|--|
| CAT.NO. | XT30154T | | | | | I.P. | 54 | | | |
| SPEC. | 05E647X510G1 | | | | | ENCL | TEFC | | | |
| FRAME | 143T | | H.P. | 1.5 | | | | | | |
| VOLTS | 208-230/460 | | P.F. | 72 | | | | | | |
| F.L. AMPS | 4.64-4.6/2.3 | | RATING | 40C AMB-CONT | | | | | | |
| R.P.M. | 1770 | | | | | | | | | |
| HZ. | 60 | | PH. | 3 | | CLASS | F | | | |
| SER.F. | 1.15 | | DES. | B | | SL HZ | 1 | | | |
| NEMA NOM. EFF. | 86.5 | | WK2 | 0.174 | | | | | | |
| DE | 6205 | | ODE | 6203 | | | | | | |
| MAG. CUR. | 2.5-3/1.5 | | | | | | | | | |
| INV TYPE | PWM | CHP | 60 | | TO | 90 | | T. CODE | T4 | |
| CT | 3 | TO | 60 | | VT | 3 | | TO | 60 | |
| CC | 010A | | SN | | | | | | | |
| | SFA 4.8-4.6/2.3 | | | | | | | | | |

AC Induction Motor Performance Data

Record # 84555

Typical performance - not guaranteed values

| Winding: 05WGX008-R048 | | Type: 0530M | | Enclosure: TEFC | |
|-------------------------------|--------------------------|----------------------------|--|--------------------------|--|
| Nameplate Data | | | 460 V, 60 Hz: High Voltage Connection | | |
| Rated Output (HP) | 1.5 | Full Load Torque | 4.49 LB-FT | | |
| Volts | 208-230/460 | Start Configuration | direct on line | | |
| Full Load Amps | 4.6-4.2/2.1 | Breakdown Torque | 18.9 LB-FT | | |
| R.P.M. | 1760 | Pull-up Torque | 10.1 LB-FT | | |
| Hz | 60 Phase | 3 | Locked-rotor Torque | 13.8 LB-FT | |
| NEMA Design Code | B KVA Code | L | Starting Current | 18 A | |
| Service Factor (S.F.) | | 1 | No-load Current | 1.21 A | |
| NEMA Nom. Eff. | 88.5 Power Factor | 76 | Line-line Res. @ 25°C | 9.69 Ω | |
| Rating - Duty | 40C AMB-CONT | | Temp. Rise @ Rated Load | 30°C | |
| S.F. Amps | | | Temp. Rise @ S.F. Load | 37°C | |
| | | | Locked-rotor Power Factor | 47.8 | |
| | | | Rotor inertia | 0.177 lb-ft ² | |

Load Characteristics 460 V, 60 Hz, 1.5 HP

| % of Rated Load | 25 | 50 | 75 | 100 |
|------------------------|-----------|-----------|-----------|------------|
| Power Factor | 33 | 54 | 67 | 75 |
| Efficiency | 78.6 | 86.5 | 88.3 | 89 |
| Speed | 1791 | 1782 | 1773 | 1761 |
| Line amperes | 1.29 | 1.49 | 1.76 | 2.1 |

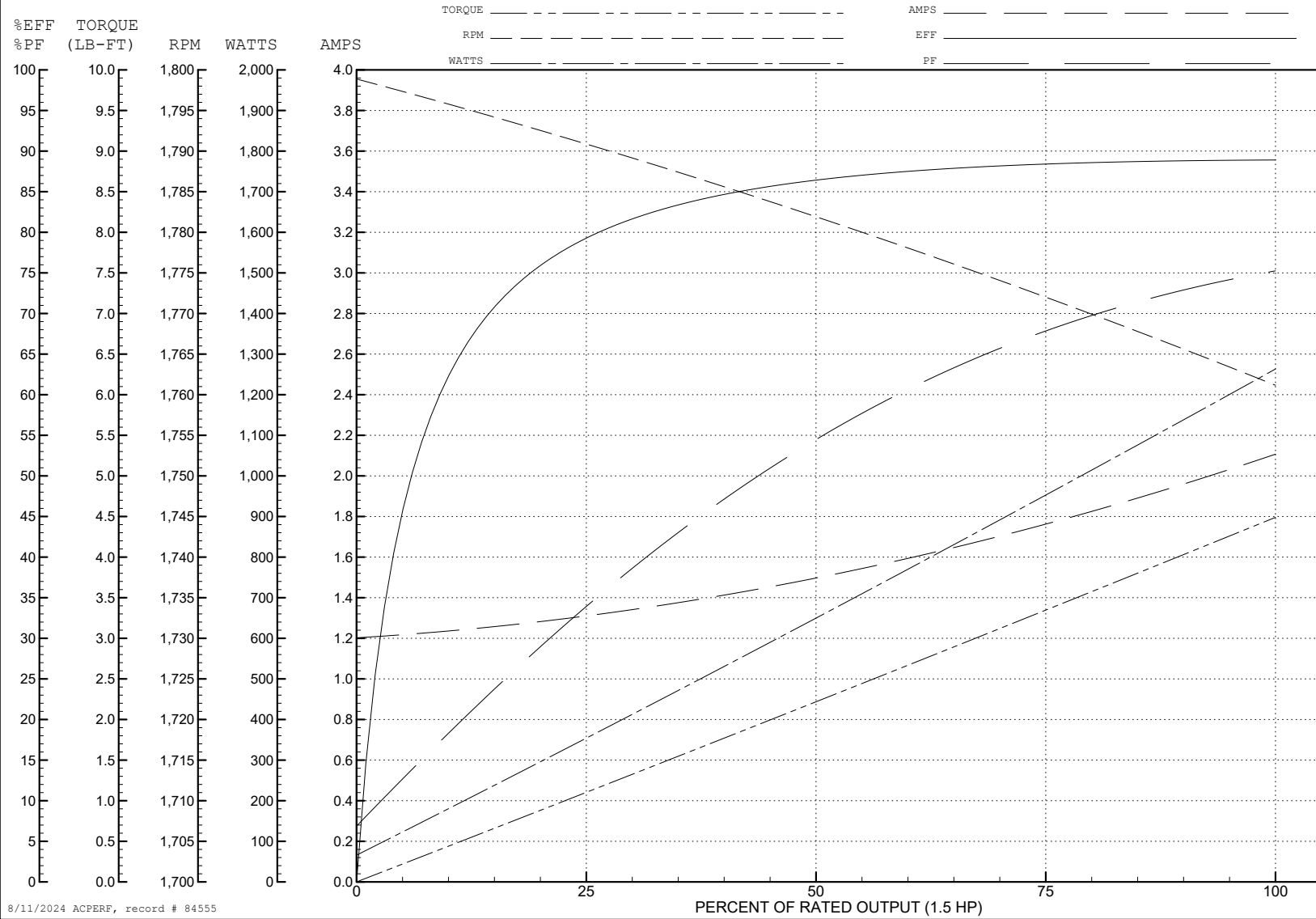
ABB Motors and Mechanical Inc.

WINDING # 05WGX008

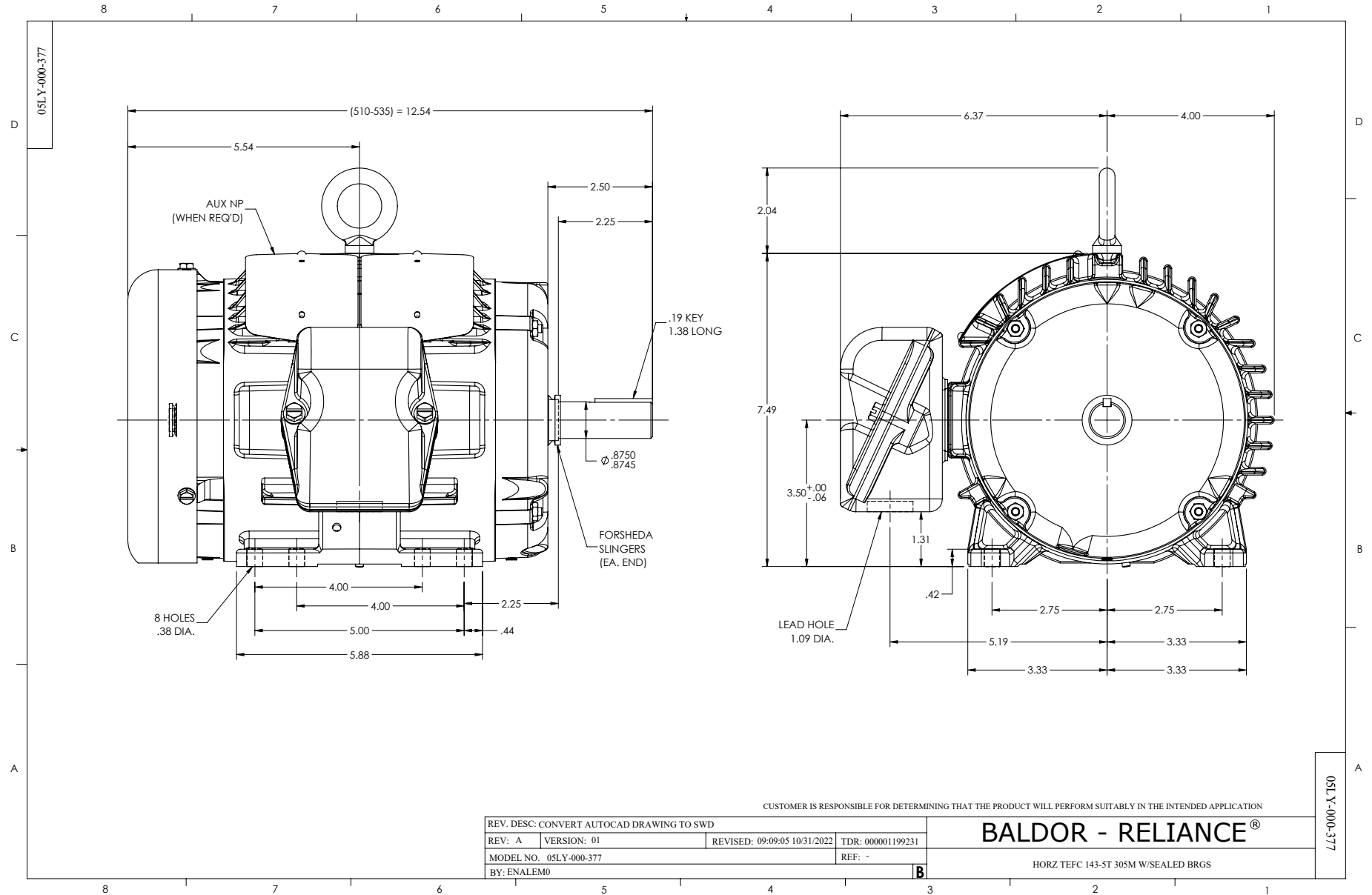
1.5 HP 3 PH 60 HZ 1760 RPM 460 V 0530M

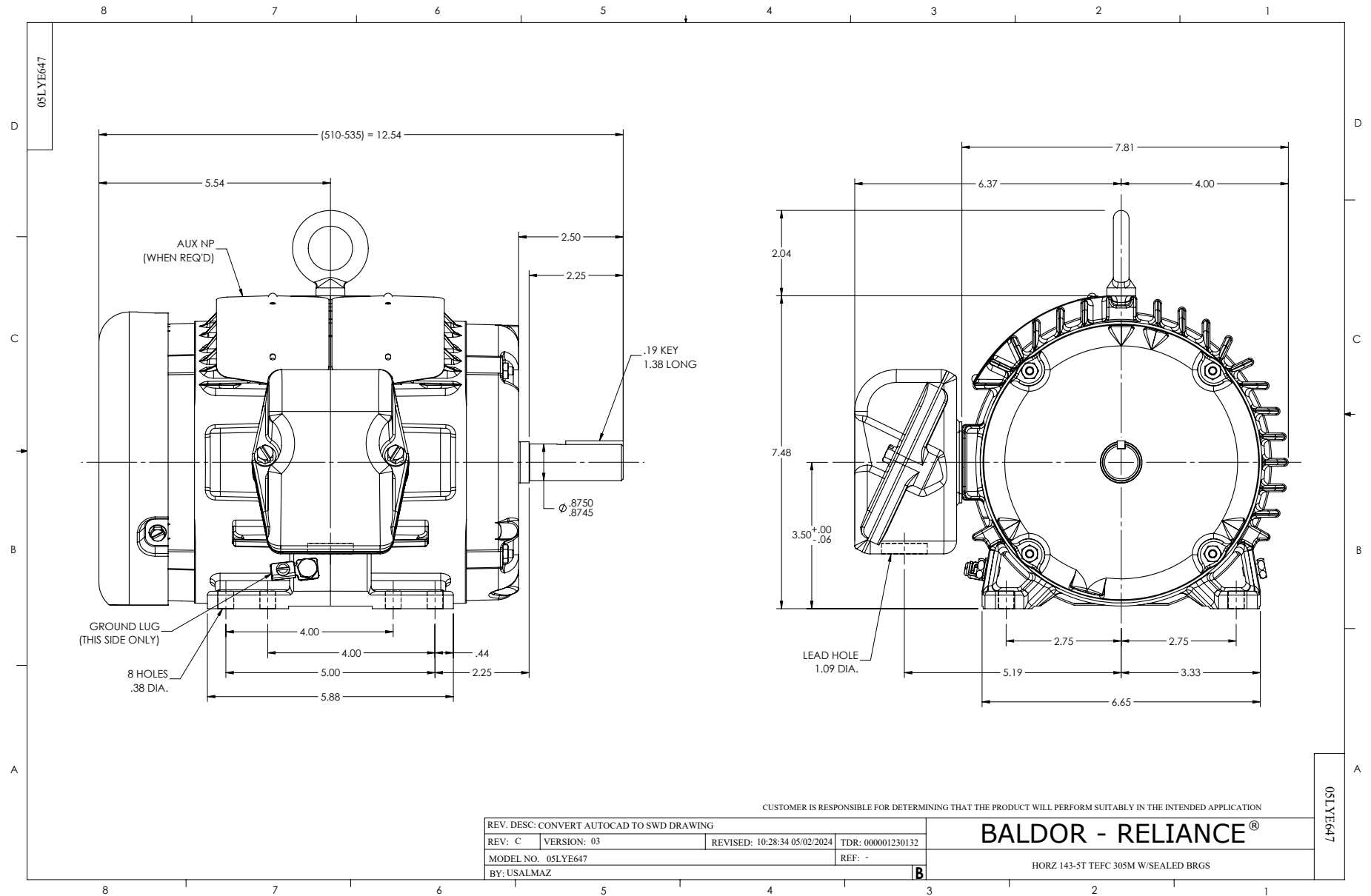
Typical performance - not guaranteed values.

TORQUES (LB-FT): PO=18.9 PU=10.1 LR=13.8 LRA=18



8/11/2024 ACPERF, record # 84555





CD0005



LOW VOLTAGE
(2Y)



LINE

HIGH VOLTAGE
(1Y)



LINE

NOTES:

1. INTERCHANGE ANY TWO LINE LEADS TO REVERSE ROTATION.
2. OPTIONAL THERMOSTATS ARE PROVIDED WHEN SPECIFIED.
3. ACTUAL NUMBER OF INTERNAL PARALLEL CIRCUITS MAY BE A MULTIPLE OF THOSE SHOWN ABOVE.
4. LEAD COLORS ARE OPTIONAL. LEADS MUST ALWAYS BE NUMBERED AS SHOWN.

CD0005

| | | | |
|---|---------|-------------------------|--------------|
| REV. DESC: REVISE TO SHOW OPTIONAL COLORS | | | |
| REV. LTR: E | BY: JLP | REVISED: 01/19/99 10:15 | TDR: 0171435 |
| S00000 | | FILE: AAA00005140 | MDL: - |
| | | MTL: - | |

BALDOR ELECTRIC Co.

3PH, DV, 9 LEADS