



---

# Customer information packet

## XM36562T

50HP, 1185RPM, 3PH, 60HZ, 365T, A3668M, TEFC, F

Class - CLI GP D; CLII GP F,G

Division - Division I

## Specifications

Enclosure	TEFC
Frame	365T
Frame Material	Iron
Frequency	60.00 Hz
Haz Area Class and Group	CLI GP D; CLII GP F,G
Haz Area Division	Division I
Motor Letter Type	Three Phase
Output @ Frequency	50.000 HP @ 60 HZ
Phase	3
Synchronous Speed @ Frequency	1200 RPM @ 60 HZ
Voltage @ Frequency	230.0 V @ 60 HZ 460.0 V @ 60 HZ
Agency Approvals	CSA UL
Ambient Temperature	40 °C
Auxiliary Box	NO AUXILLARY BOX
Base Indicator	Rigid
Bearing Grease Type	Polyrex EM (-20F +300F)
Constant Torque Speed Range	6-60
Current @ Voltage	124.000 A @ 230.0 V 132.000 A @ 208.0 V 62.000 A @ 460.0 V
Design Code	B
Drip Cover	No Drip Cover
Duty Rating	CONT
Efficiency @ 100% Load	94.1 %
Feedback Device	NO FEEDBACK
Haz Area Temp Code	T3C
Heater Indicator	No Heater
High Voltage Full Load Amps	62.0 a
Insulation Class	F
Inverter Code	Inverter Ready

## Part detail

Revision	J
Type	AC
Mech. spec.	
Base	
Status	PRD/A
Elec. spec.	A36WG4262
Layout	611742-987
Eff. date	01-22-2026
CD Diagram	416820-002
Poles	06
Leads	3#4,6#6
Proprietary	False
Created date	10-03-2022

<b>KVA Code</b>	G
<b>Lifting Lugs</b>	Standard Lifting Lugs
<b>Max Speed</b>	1800 rpm
<b>Motor Lead Quantity/Wire Size</b>	3 @ 4 AWG
<b>Motor Standards</b>	NEMA
<b>Motor Type</b>	A3668M
<b>Mounting Arrangement</b>	F1
<b>Number of Poles</b>	6
<b>Overall Length</b>	33.48 IN
<b>Power Factor</b>	81
<b>Product Family</b>	General Industrial
<b>Pulley End Bearing Type</b>	Ball
<b>Pulley Face Code</b>	Standard
<b>Service Factor</b>	1.15
<b>Shaft Diameter</b>	2.374 IN
<b>Shaft Ground Indicator</b>	No Shaft Grounding
<b>Shaft Rotation</b>	Reversible
<b>Shaft Slinger Indicator</b>	Shaft Slinger
<b>Speed</b>	1185 rpm
<b>Speed Code</b>	Single Speed
<b>Starting Method</b>	Direct on line
<b>Thermal Device - Bearing</b>	None
<b>Thermal Device - Winding</b>	Normally Closed Thermostat

**Nameplate**

**NP4017L**

<b>SPEC NO.</b>	A36-8074-4262	<b>CAT.NO.</b>	XM36562T	<b>FRAME SIZE</b>	365T
<b>HP</b>	50	<b>VOLTS</b>	230/460	<b>PHASE</b>	3
<b>RPM</b>	1185	<b>AMPS</b>	124/62	<b>HZ</b>	60
<b>DRIVE END BEARING</b>	65BC03J30X	<b>DUTY</b>	CONT	<b>INSUL CLASS</b>	F
<b>OPP D.E. BEARING</b>	65BC03J30X	<b>ENCL</b>	TEFC	<b>CODE</b>	G
<b>SINE WAVE SF</b>	1.15	<b>WK2</b>	18.71	<b>MAG CUR</b>	44/22
<b>CT HZ</b>	6-60	<b>VT HZ</b>	0-60	<b>CHP HZ</b>	60-90
				<b>NOM.EFF.</b>	94.1
<b>SER.NO.</b>		<b>MOTOR WEIGHT</b>	965		

---

**000613006PC**

---

**CLASS I GROUP** D X X **NO.****CLASS II GROUP** F G X**OPERATING TEMP CODE** T3C

---

---

**NP2496L**

---

POLYREX EM

---

S/O	FRAME	HP	TYPE	PHASE/ HERTZ	RPM	VOLTS
	365HP	50	P	3/60	1185	230/460

AMPS	DUTY	AMB °C/ INSUL	S.F.	NEMA DESIGN	CODE LETTER	ENCLOSURE
124/61.9	CONT	40/F	1.15	B	G	TEFC

E/S	ROTOR	TEST S.O.	TEST DATE	STATOR RES. @25 °C OHMS (BETWEEN LINES)
-	418141089AE	---	---	.0290/116

**PERFORMANCE**

LOAD	HP	AMPERES	RPM	% POWER FACTOR	% EFFICIENCY
NO LOAD	0	23.9	1200	5.00	0
1/4	12.5	28.4	1197	45.8	90.1
2/4	25.0	37.2	1194	67.2	93.6
3/4	37.5	48.7	1191	76.4	94.3
4/4	50.0	61.9	1188	80.3	94.2
5/4	62.5	76.1	1185	82.0	93.7

**SPEED TORQUE**

	RPM	TORQUE % FULL LOAD	TORQUE LB.-FT.	AMPERES
LOCKED ROTOR	0	165	365	375
PULL UP	540	147	325	335
BREAKDOWN	1135	253	559	200
FULL LOAD	1188	100	221	61.9

AMPERES SHOWN FOR 460 VOLT CONNECTION. IF OTHER CONNECTIONS ARE AVAILABLE, THE AMPERES WILL VARY INVERSELY WITH THE RATED VOLTAGE.

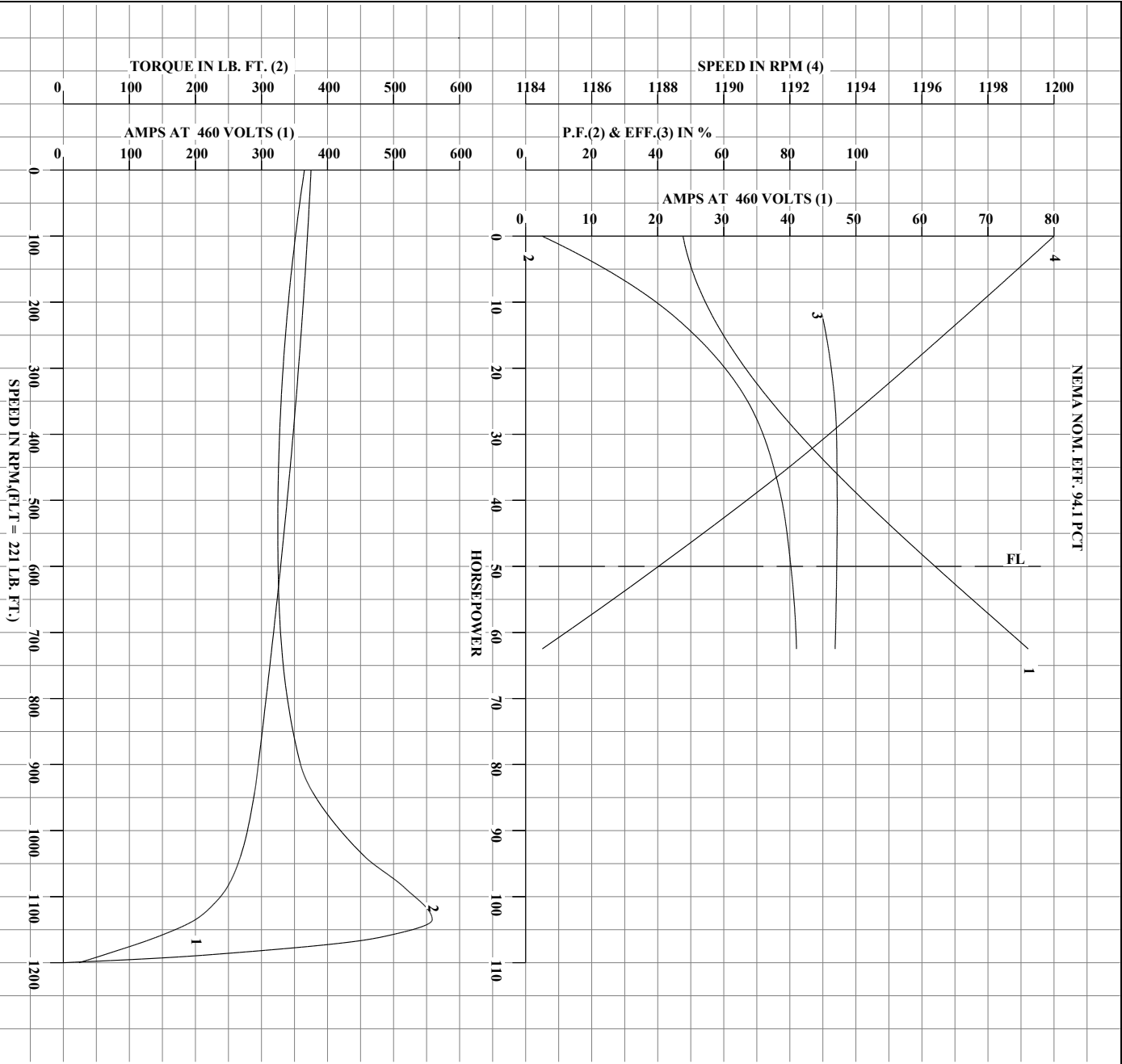
TYPICAL DATA  
NEMANOM. EFF. 94.1 PCT

	DRAWN BY: CBATANGANE	AC MOTOR PERFORMANCE DATA	<b>A36WG4262-R001</b>
	CHECKED BY: J.P. TSAO APPROVED BY: W.L. SMITH DATE: 11/12/25	DATE ISSUED 11/12/25	

USCHATA

Printed on 11/12/2025 1:23 PM

REL.S.O.	RPM 1185	S.F. 1.15	ROTOR 418141089AE
FRAME 365HP	VOLTS 230/460	NEMA DESIGN B	TEST S.O. TYPICAL DATA
HP 50	AMPS 124/61.9	CODE LETTER G	TEST DATE ---
TYPE P	DUTY CONT	ENCLOSURE TEFC	STATOR RES. @ 25°C .0290/.116
PHASE/HERTZ 3/60	AMB °C/INSUL. 40/F	E/S -	OHMS (BETWEEN LINES)



AMPERES SHOWN FOR 230/460 VOLT CONNECTION, IF OTHER VOLTAGE CONNECTIONS ARE AVAILABLE, THE AMPERES WILL VARY INVERSELY WITH THE RATED VOLTAGE.



DRAWN BY: C.B. ATANGANE  
 CHECKED BY: J.P. TSAO  
 APPROVED BY: W.L. SMITH  
 DATE: 11/12/25

AC MOTOR  
 PERFORMANCE  
 DATA

A36WG4262-R001  
 ISSUE DATE 11/12/25

USCHATA

Printed on 11/12/2025 1:23 PM

611742-987

ENCLOSURE: TOTALLY ENCLOSED  
UNDERWRITER MOTOR

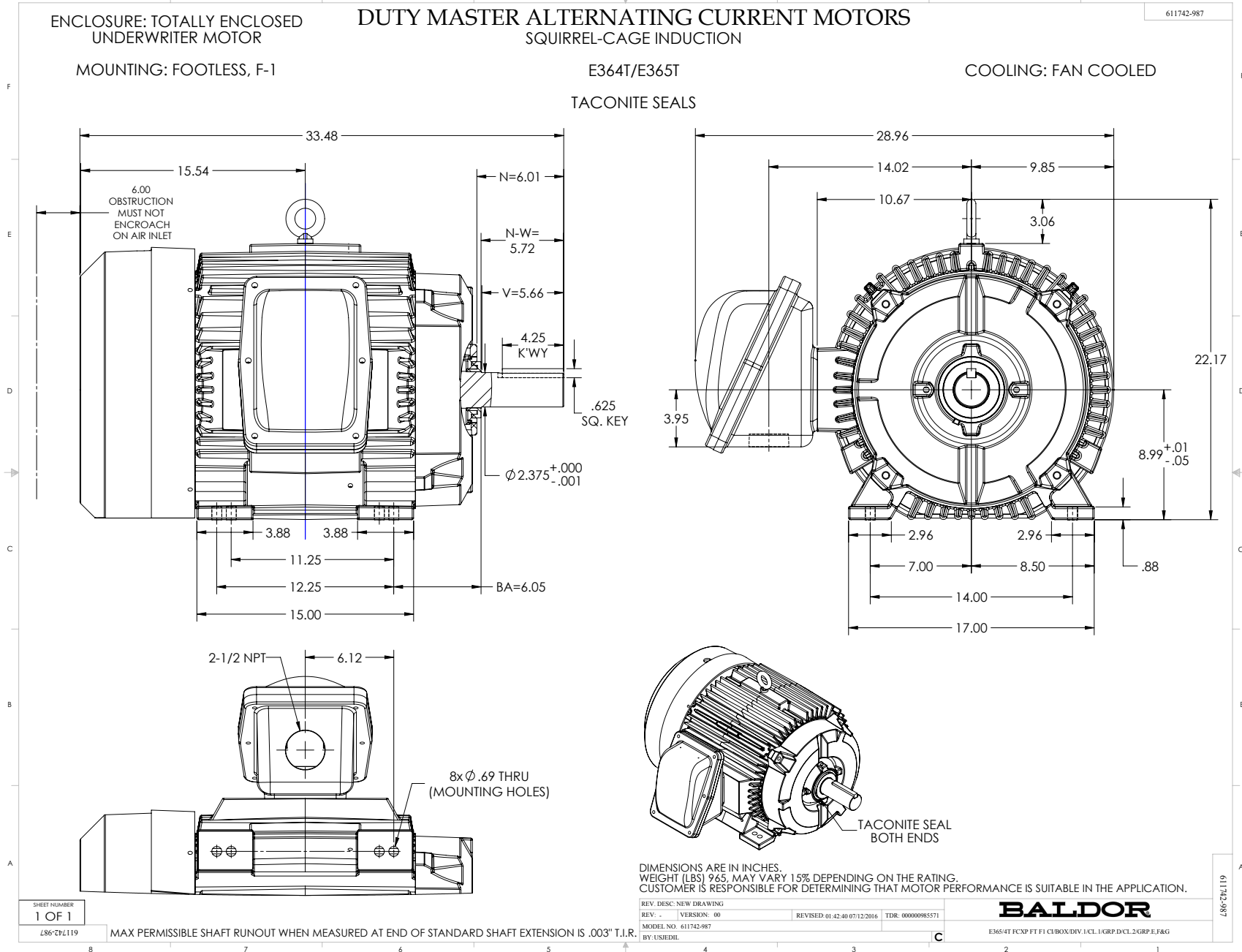
**DUTY MASTER ALTERNATING CURRENT MOTORS**  
SQUIRREL-CAGE INDUCTION

MOUNTING: FOOTLESS, F-1

E364T/E365T

COOLING: FAN COOLED

TACONITE SEALS



# CONNECTION DIAGRAM ACCESSORIES

MOTOR WINDING THERMOSTATS	
CONTACTS _____ @ _____ °C	
FIGURE NUMBER _____	
CONTACT RATING	
VOLTS	CONTINUOUS AMPERES
110-120	3.0
220-240	1.5
440-480	0.75
550-600	0.60
	INRUSH AMPERES
	30
	15
	7.5
	6.0

NORMALLY CLOSED	THERMOSTATS	NORMALLY OPEN
<p>FIGURE 1</p>		<p>FIGURE 4</p>
<p>FIGURE 2</p>		<p>FIGURE 5</p>
<p>FIGURE 3</p>		<p>FIGURE 6</p>
<p>FIGURE 7</p>		<p>FIGURE 8</p>

CUSTOMER \_\_\_\_\_ CUSTOMER ORDER NO. \_\_\_\_\_ S.O. NO. \_\_\_\_\_

418174-006

418174-006

REV. DESC: LOADED TO BUS		
REV. LTR: A	VERSION: 01	TDR: 000000570390
FILE: \RAG\00013\849	REVISED: 10:16:21 12/07/2010	BY: RAGDRF
MTL: -		

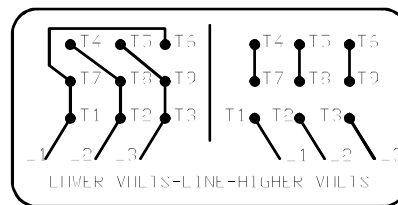
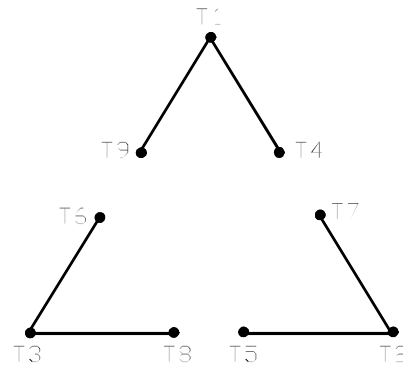
**BALDOR**

A-C MOTOR CONNECTION ACCESSORIES

SH 1 of 1

416820-002

A-C MOTOR  
 CONNECTION DIAGRAM  
 STANDARD 9 LEAD DELTA-CONNECTED



(N.P. 1575-B)

416820-002

REV. DESC: FONT CHANGE FOR PDF SEARCHABLE		
REV. LTR: A	VERSION: 01	TDR: 000001009382
FILE: \MGA\00000\661	REVISED: 02:46:19 02/13/2020	BY: MGHMTT
MTL: -	© □	

**BALDOR - RELIANCE®**

CONN DIAG - STANDARD 9 LEAD, DELTA-CONNECTED

SH 1 of 1