

ABB BALDOR RELIANCE III

Customer information packet

XM322562T

25//20HP, 1180//985RPM, 3PH, 60//50HZ, 324T

Class - CLI GP D; CLII GP F,G

Division - Division I

Specifications

Enclosure	XPFC
Frame	324T
Frame Material	Iron
Frequency	50.00 Hz 60.00 Hz
Haz Area Class and Group	CLI GP D; CLII GP F,G
Haz Area Division	Division I
Motor Letter Type	Three Phase
Output @ Frequency	25.000 HP @ 60 HZ 20.000 HP @ 50 HZ
Phase	3
Synchronous Speed @ Frequency	1200 RPM @ 60 HZ
Voltage @ Frequency	460.0 V @ 60 HZ 190.0 V @ 50 HZ 230.0 V @ 60 HZ 380.0 V @ 50 HZ
Agency Approvals	UL CSA EEV
Ambient Temperature	40 °C
Auxiliary Box	NO AUXILLARY BOX
Auxiliary Box Lead Termination	None
Base Indicator	Rigid
Bearing Grease Type	Polyrex EM (-20F +300F)
Blower	None
Constant Torque Speed Range	6
Current @ Voltage	31.000 A @ 380.0 V 32.000 A @ 460.0 V 62.000 A @ 190.0 V 63.000 A @ 230.0 V
Design Code	A
Drip Cover	No Drip Cover
Duty Rating	CONT

Part Detail

Revision	C
Type	AC
Mech. spec.	
Base	
Status	PRD/A
Elec. spec.	12WGY116
Layout	12LYL018
Eff. date	11-22-2024
CD Diagram	CD0180
Poles	06
Leads	9#8
Proprietary	False
Created date	03-19-2021

Efficiency @ 100% Load	93.0 %
Electrically Isolated Bearing	Not Electrically Isolated
Feedback Device	NO FEEDBACK
Haz Area Temp Code	T3C
Heater Indicator	No Heater
High Voltage Full Load Amps	31.0 a
Insulation Class	F
Inverter Code	Inverter Duty
IP Rating	NONE
KVA Code	H
Lifting Lugs	Standard Lifting Lugs
Locked Bearing Indicator	Locked Bearing
Max Speed	1500 rpm
Motor Lead Termination	Flying Leads
Motor Standards	NEMA
Motor Type	1260M
Mounting Arrangement	F1
Number of Poles	6
Overall Length	32.00 IN
Power Factor	79
Product Family	General Purpose
Pulley Face Code	Standard
Rodent Screen	None
Service Factor	1.00
Shaft Diameter	2.125 IN
Shaft Ground Indicator	No Shaft Grounding
Shaft Rotation	Reversible
Speed	1180 rpm
Speed Code	Single Speed
Starting Method	Direct on line
Thermal Device - Bearing	None
Thermal Device - Winding	Normally Closed Thermostat
Vibration Sensor Indicator	No Vibration Sensor
Winding Thermal 1	None

Winding Thermal 2

None

Nameplate

NP0887XPSLEV

NO.		CC	010A	
S/N		TEMP CODE	T3C	
SPEC.	12-0000-2081	INV.TYPE	PWM	
CAT.NO.	XM322562T	C HP FR	60	C HP TO 90
HP	25//20	CT HZ FROM	6	CT HZ TO 60
VOLTS	230/460//190/380	VT HZ FROM	6	VT HZ TO 60
AMPS	63/32//62/31	MAG CUR	28/14	
RPM	1180//985	MX RPM	1500	
HZ	60//50	PH	3	CL B
		NOM.EFF.	93	
SER.F.	1.00	DES	A	SL HZ 1
		WK2	11.5	
FRAME	324T	RATING	40C AMB-CONT	
	NEMA MG-1 PART 5, IP54			
	1.15 SF ON SINE WAVE			

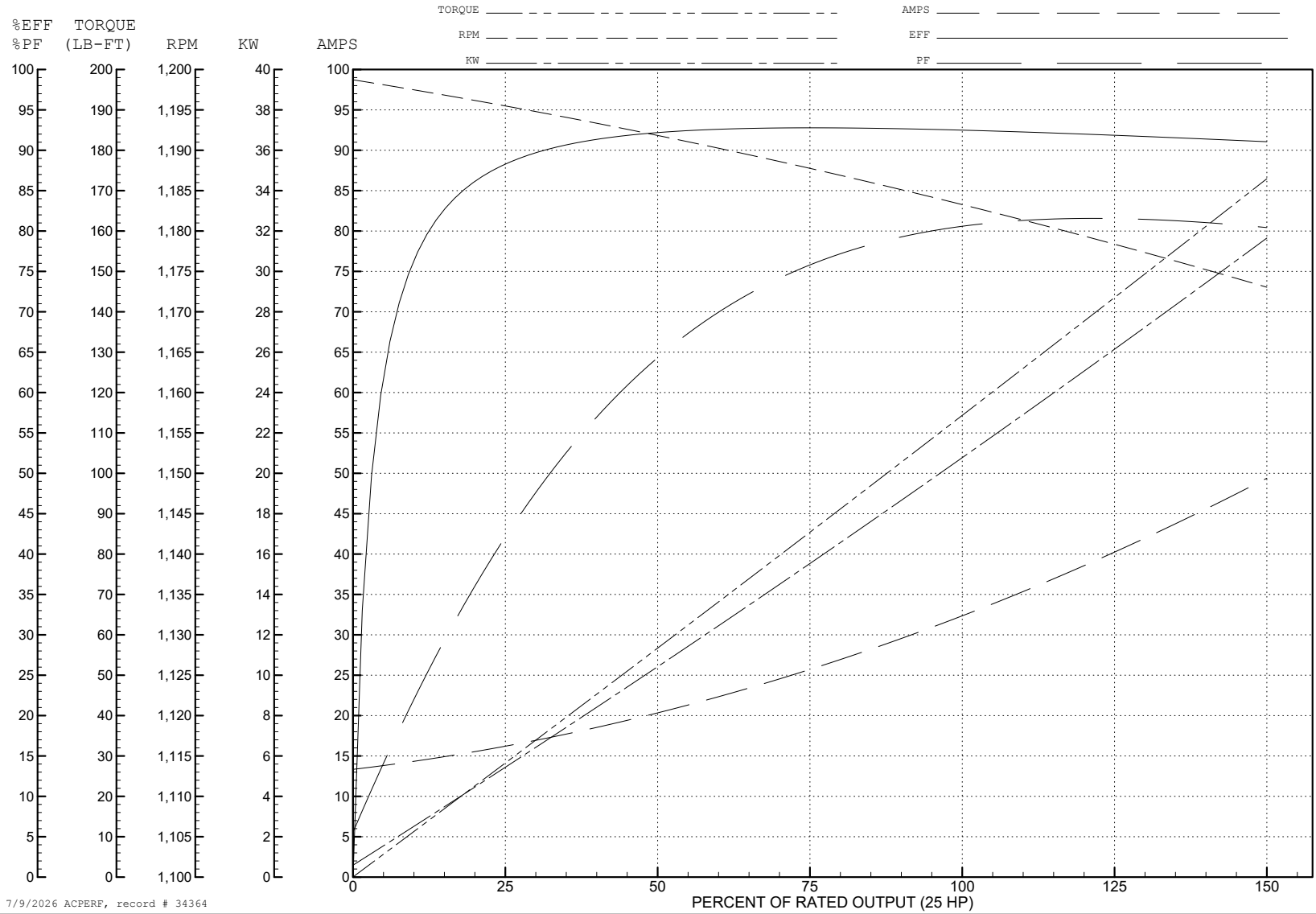
ABB Motors and Mechanical Inc.

WINDING # 12WGY116

25 HP 3 PH 60 HZ 1183.9 RPM 460 V 1260M

Typical performance - not guaranteed values.

TORQUES (LB-FT): PO=308 PU=117 LR=171 LRA=198



7/9/2026 ACPERF, record # 34364

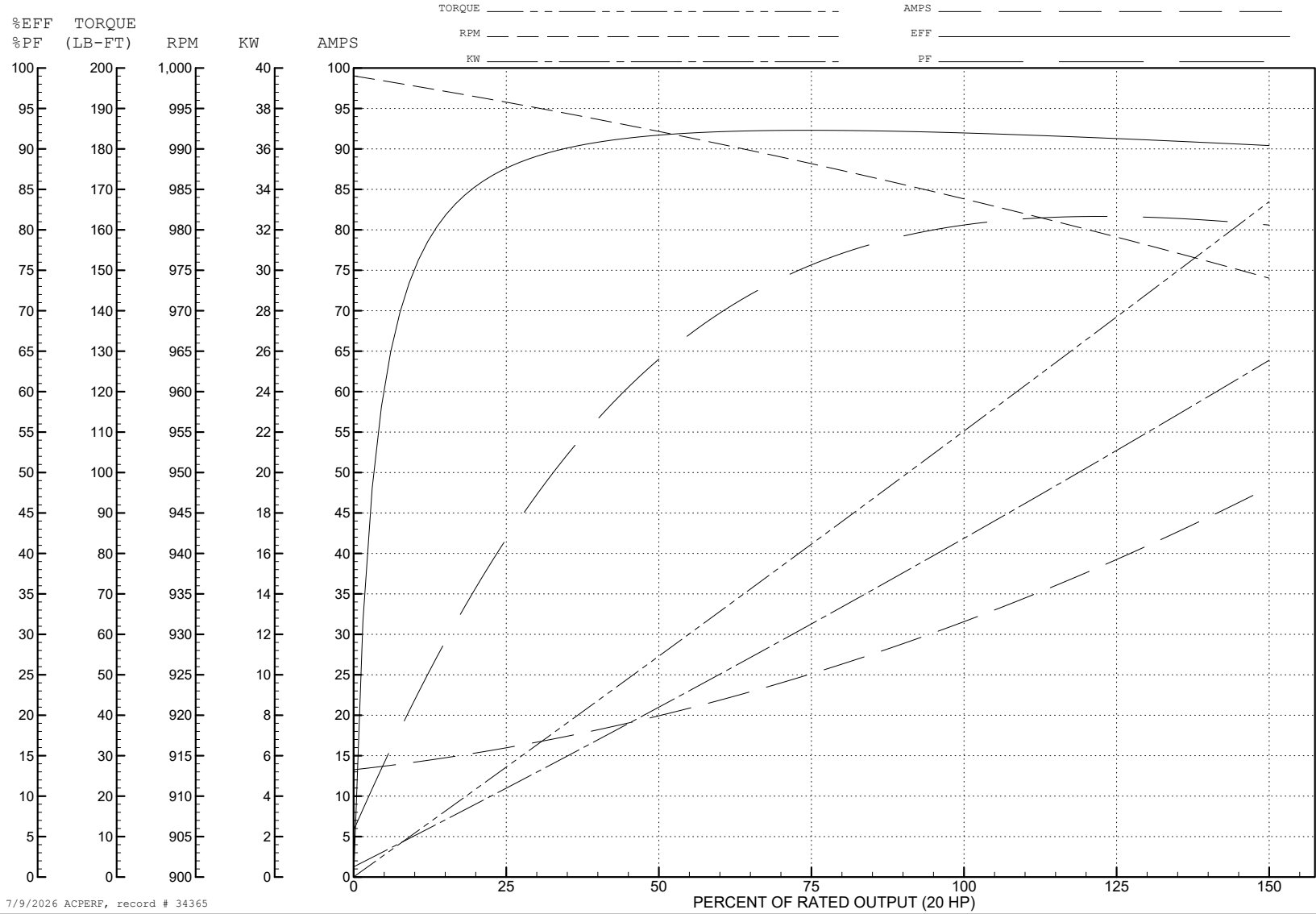
ABB Motors and Mechanical Inc.

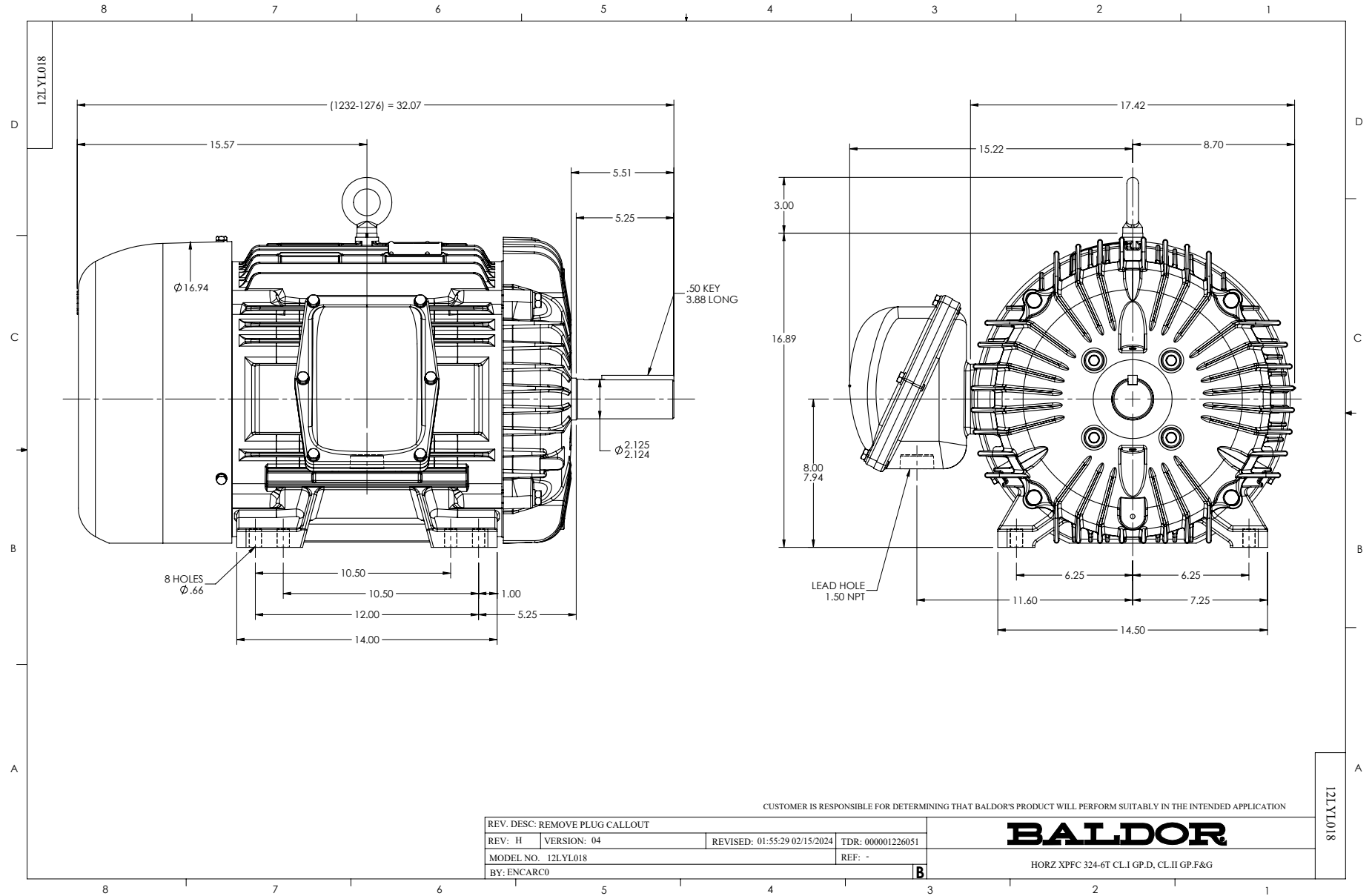
WINDING # 12WGY116

Typical performance - not guaranteed values.

20 HP 3 PH 50 HZ 984 RPM 380 V 1260M

TORQUES (LB-FT): PO=298 PU=123 LR=179 LRA=194

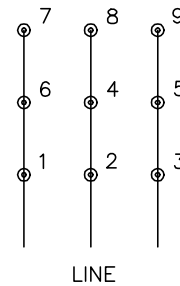




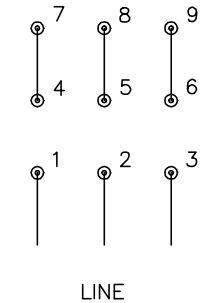
CD0180



LOW VOLTAGE
(2D)



HIGH VOLTAGE
(1D)



NOTES:

1. INTERCHANGE ANY TWO LINE LEADS TO REVERSE ROTATION.
2. OPTIONAL THERMOSTATS ARE PROVIDED WHEN SPECIFIED.
3. ACTUAL NUMBER OF INTERNAL PARALLEL CIRCUITS MAY BE A MULTIPLE OF THOSE SHOWN ABOVE.
4. LEAD COLORS ARE OPTIONAL. LEADS MUST ALWAYS BE NUMBERED AS SHOWN.

CD0180

REV. DESC: ADD CLASS CONN00000007		
REV. LTR: D	VERSION: 01	TDR: 000001099922
FILE: \AAA\00005\148	REVISED: 10: 25: 29 02/19/2019	BY: ENBRIRO
MTL: -	© □	

BALDOR - RELIANCE®

3PH, DV, 9 LEADS, DELTA CONNECTION

SH 1 of 1