

BALDOR • RELIANCE

Customer information packet

XM28322T

30//25HP, 3525//2920RPM, 3PH, 60//50HZ, 286T

Class - CLI GP D; CLII GP F,G

Division - Division I

Specifications

Enclosure	XPFC
Frame	286TS
Frame Material	Iron
Frequency	50.00 Hz 60.00 Hz
Haz Area Class and Group	CLI GP D; CLII GP F,G
Haz Area Division	Division I
Motor Letter Type	Three Phase
Output @ Frequency	30.000 HP @ 60 HZ 25.000 HP @ 50 HZ
Phase	3
Synchronous Speed @ Frequency	3600 RPM @ 60 HZ
Voltage @ Frequency	460.0 V @ 60 HZ 190.0 V @ 50 HZ 230.0 V @ 60 HZ 380.0 V @ 50 HZ
Agency Approvals	UL CSA EEV
Ambient Temperature	40 °C
Auxillary Box	No Auxillary Box
Auxillary Box Lead Termination	None
Base Indicator	Rigid
Bearing Grease Type	Polyrex EM (-20F +300F)
Blower	None
Constant Torque Speed Range	6
Current @ Voltage	34.000 A @ 460.0 V 35.000 A @ 380.0 V 68.000 A @ 230.0 V 70.000 A @ 190.0 V
Design Code	B
Drip Cover	No Drip Cover
Duty Rating	CONT

Part detail

Revision	B
Type	AC
Mech. spec.	
Base	
Status	PRD/A
Elec. spec.	10WGZ501
Layout	10LYE900
Eff. date	07-17-2023
CD Diagram	CD0180
Poles	02
Leads	9#10
Proprietary	False
Created date	04-21-2021

Efficiency @ 100% Load	91.7 %
Electrically Isolated Bearing	Not Electrically Isolated
Feedback Device	NO FEEDBACK
Haz Area Temp Code	T3C
Heater Indicator	No Heater
High Voltage Full Load Amps	34.0 a
Insulation Class	F
Inverter Code	Not Inverter
IP Rating	NONE
KVA Code	G
Lifting Lugs	Standard Lifting Lugs
Locked Bearing Indicator	Locked Bearing
Max Speed	5400 rpm
Motor Lead Termination	Flying Leads
Motor Standards	NEMA
Motor Type	1048M
Mounting Arrangement	F1
Number of Poles	2
Overall Length	27.24 IN
Power Factor	90
Product Family	Hazardous Location Motor
Pulley Face Code	Standard
Rodent Screen	None
Service Factor	1.00
Shaft Diameter	1.625 IN
Shaft Ground Indicator	No Shaft Grounding
Shaft Rotation	Reversible
Speed	3525 rpm
Speed Code	Single Speed
Starting Method	Direct on line
Thermal Device - Bearing	None
Thermal Device - Winding	Normally Closed Thermostat
Vibration Sensor Indicator	No Vibration Sensor
Winding Thermal 1	None

Winding Thermal 2

None

Nameplate

NP0887XPSLEV

NO.		CC	010A		
S/N		TEMP CODE	T3C		
SPEC.	10-0000-2077	INV.TYPE	PWM		
CAT.NO.	XM28322T	C HP FR	60	C HP TO	90
HP	30//25	CT HZ FROM	6	CT HZ TO	60
VOLTS	230/460//190/380	VT HZ FROM	6	VT HZ TO	60
AMPS	68/34//70/35	MAG CUR	8.7		
RPM	3525//2920	MX RPM	5400		
HZ	60//50	PH	3	CL	F
		NOM.EFF.	91.7		
SER.F.	1.00	DES	B	SL HZ	1.3
				WK2	2.07
FRAME	286TS	RATING	40C AMB-CONT		
	NEMA MG-1 PART 5, IP54				
	1.15 SF ON SINE WAVE				

AC Induction Motor Performance Data

Record # 70639

Preliminary Data Sheet

Winding: 10WGZ501-R012		Type: 1048M	Enclosure: TEFC	
Nameplate Data			460 V, 60 Hz: High Voltage Connection	
Rated Output (HP)	30//25		Full Load Torque	44.8 LB-FT
Volts	230/460//190/380		Start Configuration	direct on line
Full Load Amps	68/34//70/35		Breakdown Torque	135 LB-FT
R.P.M.	3525//2920		Pull-up Torque	47 LB-FT
Hz	60//50	Phase 3	Locked-rotor Torque	65.2 LB-FT
NEMA Design Code	B	KVA Code G	Starting Current	212 A
Service Factor (S.F.)	1.15		No-load Current	8.74 A
NEMA Nom. Eff.	91.7	Power Factor 90	Line-line Res. @ 25°C	0.237 Ω
Rating - Duty	40C AMB-CONT		Temp. Rise @ Rated Load	69°C
S.F. Amps			Temp. Rise @ S.F. Load	86°C
			Locked-rotor Power Factor	23.2136
			Rotor inertia	2.06 lb-ft ²

Load Characteristics 460 V, 60 Hz, 30 HP

% of Rated Load	25	50	75	100	125	150	S.F.
Power Factor	67	83	88	90	90	90	90
Efficiency	86.8	91.2	91.9	91.7	90.8	89.6	91.2
Speed	3583	3566	3547	3527	3504	3479	3513
Line amperes	12.4	18.7	26.1	34.1	43.1	52.5	39.5

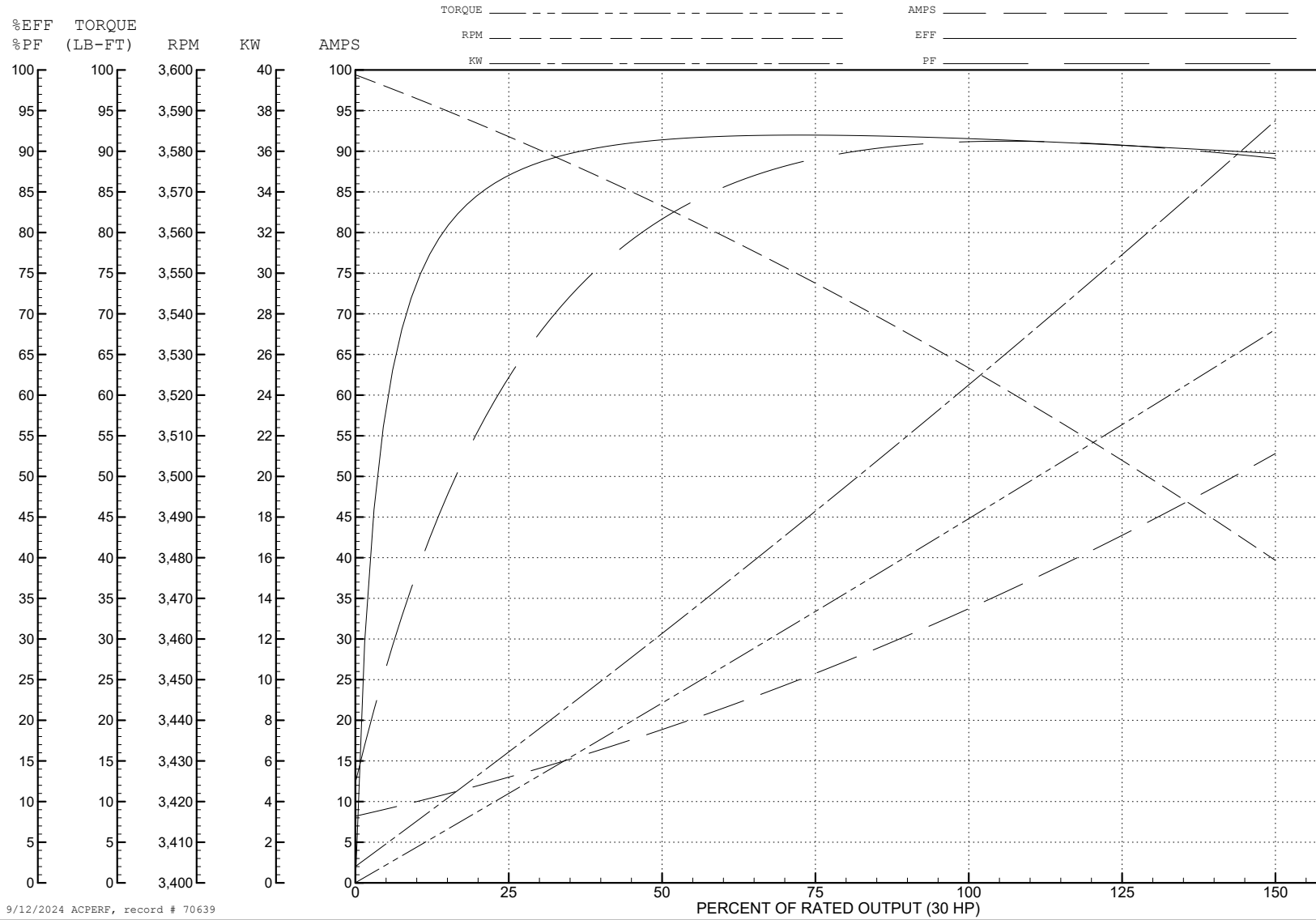
ABB Motors and Mechanical Inc.

WINDING # 10WGZ501

30 HP 3 PH 60 HZ 3527 RPM 460 V 1048M

Typical performance - not guaranteed values.

TORQUES (LB-FT): PO=135 PU=47 LR=65.2 LRA=212



9/12/2024 ACPERF, record # 70639

AC Induction Motor Performance Data

Record # 70640

Typical performance - not guaranteed values

Winding: 10WGZ501-R012		Type: 1048M	Enclosure: XPFC			
Nameplate Data			380 V, 50 Hz: High Voltage Connection			
Rated Output (HP)	30//25		Full Load Torque	45.05 LB-FT		
Volts	230/460//190/380		Start Configuration	direct on line		
Full Load Amps	68/34//70/35		Breakdown Torque	131 LB-FT		
R.P.M.	3525//2920		Pull-up Torque	49.99 LB-FT		
Hz	60//50	Phase	3	Locked-rotor Torque	69.35 LB-FT	
NEMA Design Code	B		KVA Code	G	Starting Current	208 A
Service Factor (S.F.)	1.15		No-load Current	8.65 A		
NEMA Nom. Eff.	91.7	Power Factor	90		Line-line Res. @ 25°C	0.237 Ω
Rating - Duty	40C AMB-CONT		Temp. Rise @ Rated Load	71°C		
S.F. Amps			Temp. Rise @ S.F. Load	90°C		
			Locked-rotor Power Factor	26.2		
			Rotor inertia	2.06 LB-FT ²		

Load Characteristics 380 V, 50 Hz, 25 HP

% of Rated Load	25	50	75	100	125	150	S.F.
Power Factor	68	84	89	90	90	90	90
Efficiency	85.7	90.4	91.1	90.7	89.7	88.3	90.1
Speed	2983	2966	2948	2928	2906	2881	2915
Line amperes	12.44	18.96	26.54	34.75	43.98	53.83	40.3

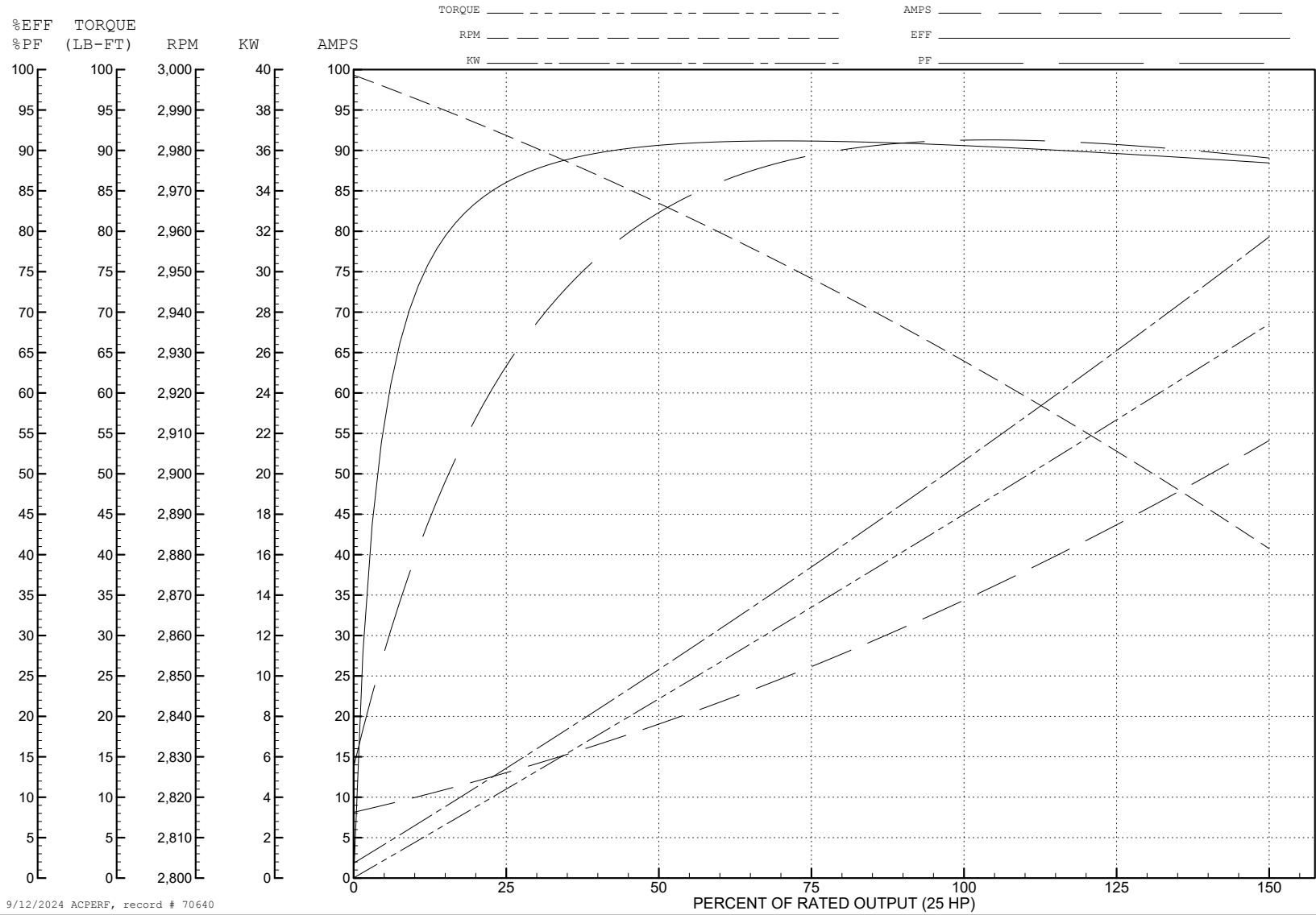
ABB Motors and Mechanical Inc.

WINDING # 10WGZ501

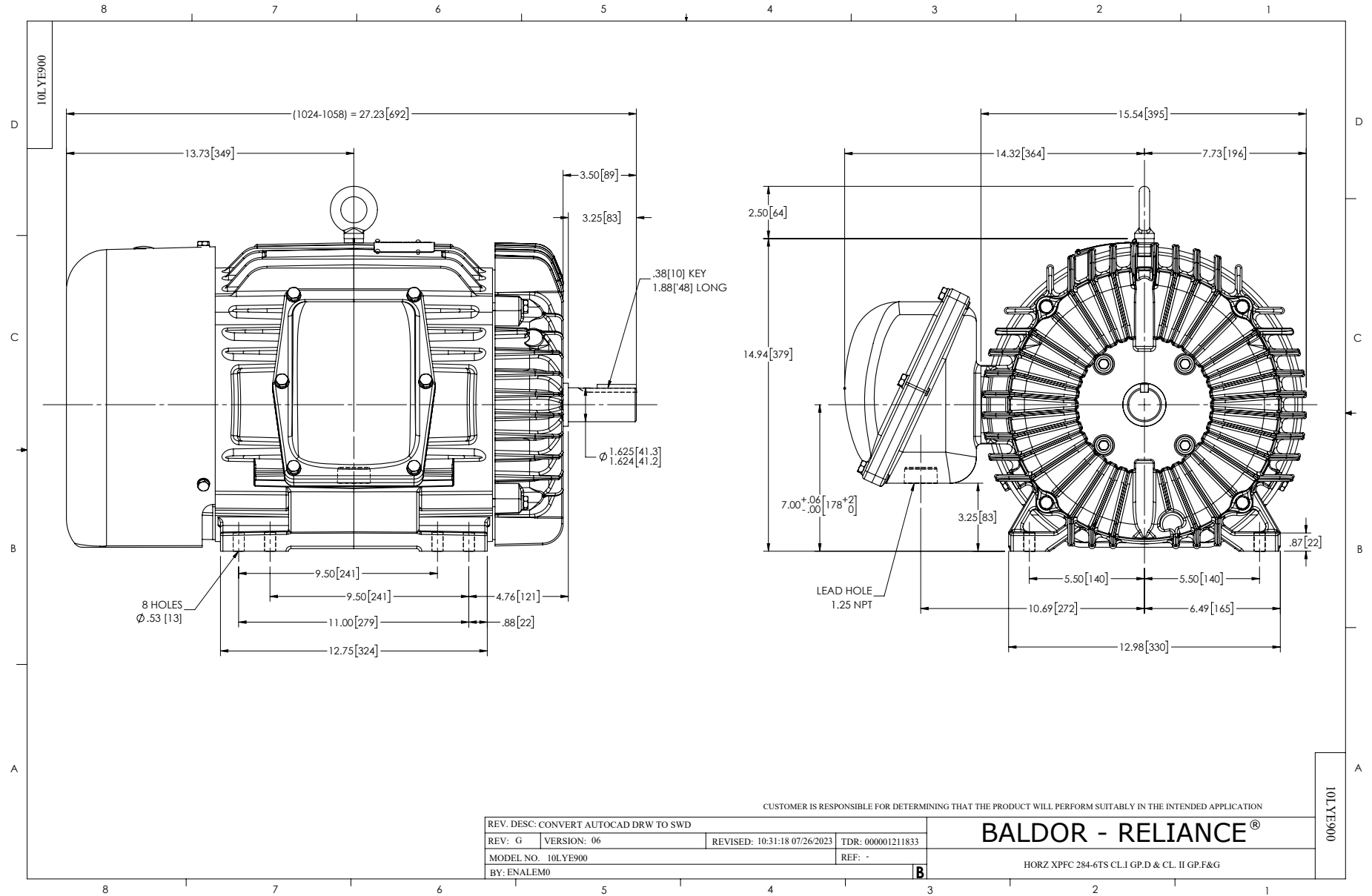
Typical performance - not guaranteed values.

25 HP 3 PH 50 HZ 2928 RPM 380 V 1048M

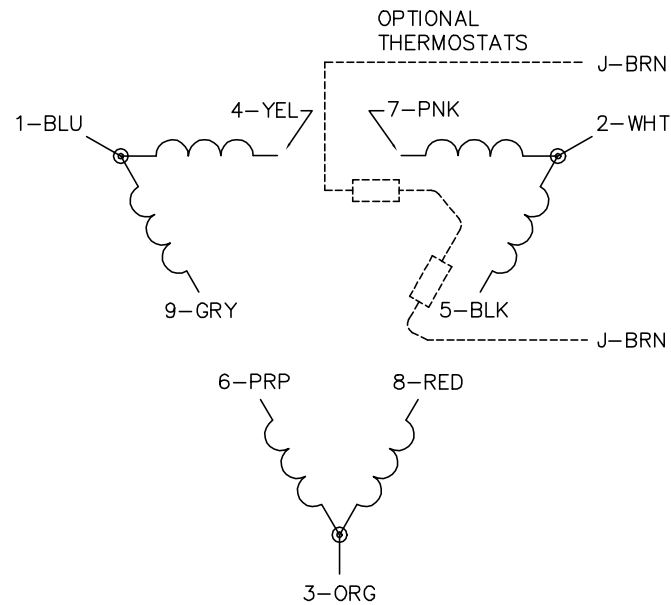
TORQUES (LB-FT): PO=131 PU=49.99 LR=69.35 LRA=208



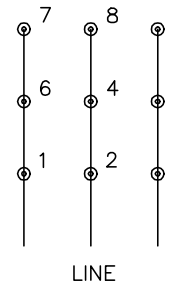
9/12/2024 ACPERF, record # 70640



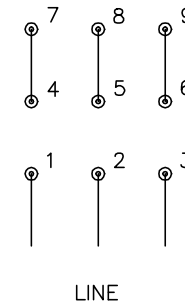
CD0180



LOW VOLTAGE
(2D)



HIGH VOLTAGE
(1D)



NOTES:

1. INTERCHANGE ANY TWO LINE LEADS TO REVERSE ROTATION.
2. OPTIONAL THERMOSTATS ARE PROVIDED WHEN SPECIFIED.
3. ACTUAL NUMBER OF INTERNAL PARALLEL CIRCUITS MAY BE A MULTIPLE OF THOSE SHOWN ABOVE.
4. LEAD COLORS ARE OPTIONAL. LEADS MUST ALWAYS BE NUMBERED AS SHOWN.

CD0180

REV. DESC: ADD CLASS CONN00000007		
REV. LTR: D	VERSION: 01	TDR: 000001099922
FILE: \AAA\00005\148	REVISED: 10: 25: 29 02/19/2019	BY: ENBRIRO
MTL: -	© □	

BALDOR - RELIANCE®

3PH, DV, 9 LEADS, DELTA CONNECTION

SH 1 of 1