



---

# Customer information packet

## XM282522T

25HP, 3520//2925RPM, 3PH, 60//50HZ, 284TS, XP

Class - CLI GP D; CLII GP F,G

Division - Division I

## Specifications

Enclosure	XPFC
Frame	284TS
Frame Material	Iron
Frequency	50.00 Hz 60.00 Hz
Haz Area Class and Group	CLI GP D; CLII GP F,G
Haz Area Division	Division I
Motor Letter Type	Three Phase
Output @ Frequency	25.000 HP @ 60 HZ 20.000 HP @ 50 HZ
Phase	3
Synchronous Speed @ Frequency	3600 RPM @ 60 HZ
Voltage @ Frequency	460.0 V @ 60 HZ 190.0 V @ 50 HZ 230.0 V @ 60 HZ 380.0 V @ 50 HZ
Agency Approvals	UL CSA EEV
Ambient Temperature	40 °C
Auxillary Box	No Auxillary Box
Auxillary Box Lead Termination	None
Base Indicator	Rigid
Bearing Grease Type	Polyrex EM (-20F +300F)
Blower	None
Constant Torque Speed Range	6
Current @ Voltage	27.000 A @ 380.0 V 28.000 A @ 460.0 V 54.000 A @ 190.0 V 56.000 A @ 230.0 V
Design Code	B
Drip Cover	No Drip Cover
Duty Rating	CONT

## Part detail

Revision	B
Type	AC
Mech. spec.	
Base	
Status	PRD/A
Elec. spec.	10WGZ273
Layout	10LYE900
Eff. date	07-17-2023
CD Diagram	CD0180
Poles	02
Leads	9#10
Proprietary	False
Created date	06-24-2020

Efficiency @ 100% Load	91.7 %
Electrically Isolated Bearing	Not Electrically Isolated
Feedback Device	NO FEEDBACK
Haz Area Temp Code	T3C
Heater Indicator	No Heater
High Voltage Full Load Amps	27.0 a
Insulation Class	B
Inverter Code	Inverter Duty
IP Rating	NONE
KVA Code	F
Lifting Lugs	Standard Lifting Lugs
Locked Bearing Indicator	Locked Bearing
Max Speed	5400 rpm
Motor Lead Termination	Flying Leads
Motor Standards	NEMA
Motor Type	1048M
Mounting Arrangement	F1
Number of Poles	2
Overall Length	27.24 IN
Power Factor	90
Product Family	Hazardous Location Motor
Pulley Face Code	Standard
Rodent Screen	None
RoHS Status	ROHS NON-COMPLIANT
Service Factor	1.00
Shaft Diameter	1.625 IN
Shaft Ground Indicator	No Shaft Grounding
Shaft Rotation	Reversible
Speed	3520 rpm
Speed Code	Single Speed
Starting Method	Direct on line
Thermal Device - Bearing	None
Thermal Device - Winding	Normally Closed Thermostat
Vibration Sensor Indicator	No Vibration Sensor

Winding Thermal 1	None
Winding Thermal 2	None

---

**Nameplate**

**NP0887XPSLEV**

<b>NO.</b>		<b>CC</b>	010A		
<b>S/N</b>		<b>TEMP CODE</b>	T3C		
<b>SPEC.</b>	10-0000-1577	<b>INV.TYPE</b>	PWM		
<b>CAT.NO.</b>	XM282522T	<b>C HP FR</b>	60	<b>C HP TO</b>	90
<b>HP</b>	25//20	<b>CT HZ FROM</b>	6	<b>CT HZ TO</b>	60
<b>VOLTS</b>	230/460//190/380	<b>VT HZ FROM</b>	6	<b>VT HZ TO</b>	60
<b>AMPS</b>	56/28//54/27	<b>MAG CUR</b>	14/7		
<b>RPM</b>	3520//2925	<b>MX RPM</b>	5400		
<b>HZ</b>	60//50	<b>PH</b>	3	<b>CL</b>	F
		<b>NOM.EFF.</b>	91.7		
<b>SER.F.</b>	1.00	<b>DES</b>	B	<b>SL HZ</b>	1.3
		<b>WK2</b>	2.07		
<b>FRAME</b>	284TS	<b>RATING</b>	40C AMB-CONT		
	1.15SF ON SINEWAVE				
	NEMA MG-1,PT.5,IP54				

**AC Induction Motor Performance Data**

Record # 66217

Typical performance - not guaranteed values

<b>Winding:</b> 10WGZ273-R010		<b>Type:</b> 1048M		<b>Enclosure:</b> XPFC	
<b>Nameplate Data</b>			<b>460 V, 60 Hz: Single Voltage Motor</b>		
<b>Rated Output (HP)</b>	25	<b>Full Load Torque</b>	37.3 LB-FT		
<b>Volts</b>	230/460	<b>Start Configuration</b>	direct on line		
<b>Full Load Amps</b>	56/28	<b>Breakdown Torque</b>	103 LB-FT		
<b>R.P.M.</b>	3520	<b>Pull-up Torque</b>	42.1 LB-FT		
<b>Hz</b>	60 <b>Phase</b>	3	<b>Locked-rotor Torque</b>	54 LB-FT	
<b>NEMA Design Code</b>	<b>B KVA Code</b>	F	<b>Starting Current</b>	171 A	
<b>Service Factor (S.F.)</b>		1	<b>No-load Current</b>	6.99 A	
<b>NEMA Nom. Eff.</b>	91.7 <b>Power Factor</b>	90	<b>Line-line Res. @ 25°C</b>	0.29072 Ω	
<b>Rating - Duty</b>	40C AMB-CONT		<b>Temp. Rise @ Rated Load</b>	57°C	
			<b>Locked-rotor Power Factor</b>	23.3	
			<b>Rotor inertia</b>	2.06 LB-FT <sup>2</sup>	

**Load Characteristics 460 V, 60 Hz, 25 HP**

<b>% of Rated Load</b>	<b>25</b>	<b>50</b>	<b>75</b>	<b>100</b>	<b>125</b>	<b>150</b>
<b>Power Factor</b>	69	83	89	90	90	90
<b>Efficiency</b>	87.8	91.6	92.2	91.8	90.9	89.7
<b>Speed</b>	3580.1	3563.2	3542.7	3521.3	3497	3469.9
<b>Line amperes</b>	10.1	15.4	21.7	28.3	35.7	43.5

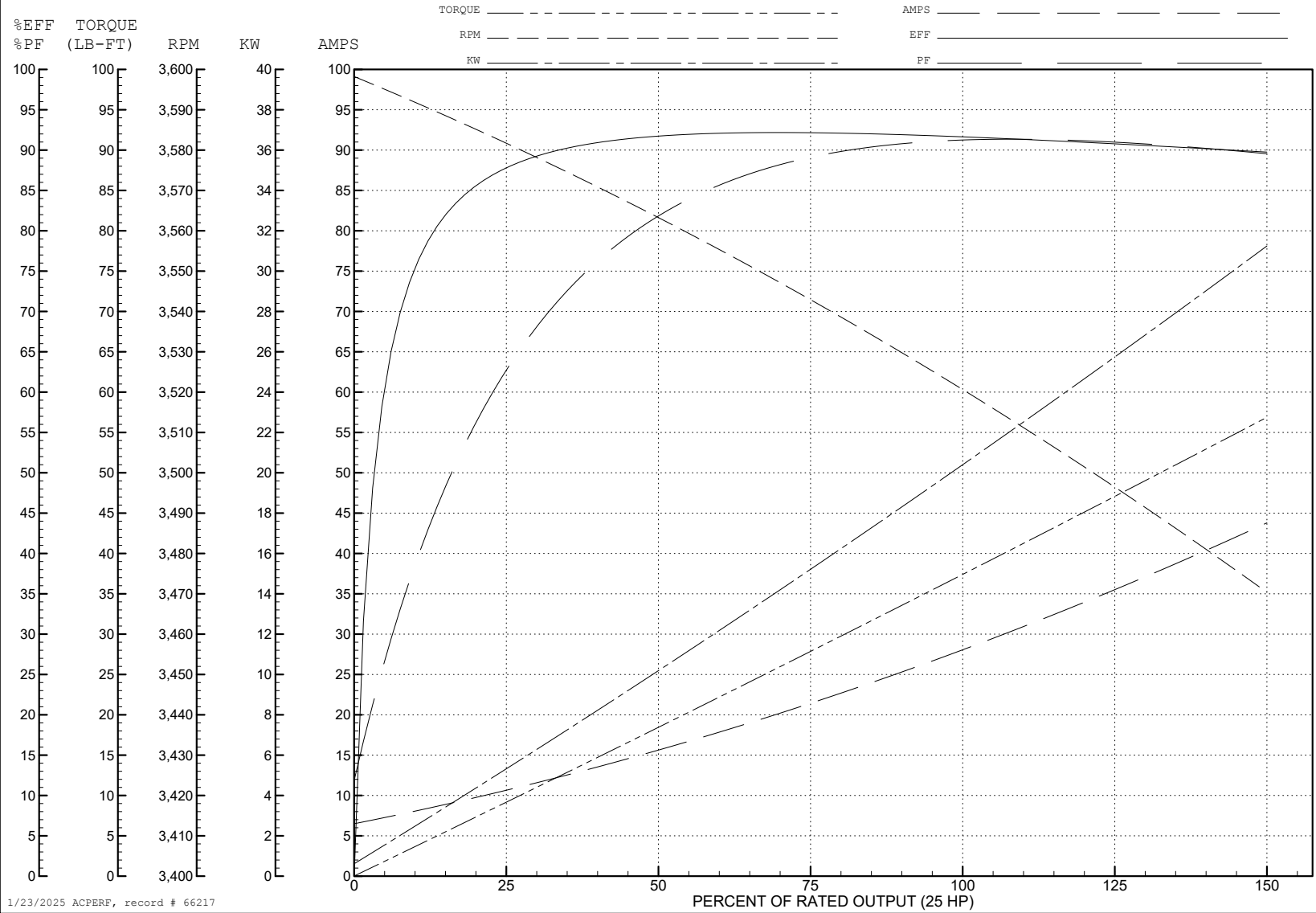
ABB Motors and Mechanical Inc.

WINDING # 10WGZ273

Typical performance - not guaranteed values.

25 HP 3 PH 60 HZ 3520 RPM 460 V 1048M

TORQUES (LB-FT): PO=103 PU=42.1 LR=54 LRA=171



1/23/2025 ACPERF, record # 66217

**AC Induction Motor Performance Data**

Record # 75690

Typical performance - not guaranteed values

Winding: 10WGZ273-R006		Type: 1048M	Enclosure: XPFC			
<b>Nameplate Data</b>			<b>380 V, 50 Hz: High Voltage Connection</b>			
Rated Output (HP)	25//20		Full Load Torque	35.93 LB-FT		
Volts	230/460//190/380		Start Configuration	direct on line		
Full Load Amps	56/28//54/27		Breakdown Torque	100 LB-FT		
R.P.M.	3520//2955		Pull-up Torque	44.79 LB-FT		
Hz	60//50	Phase	3	Locked-rotor Torque	57.45 LB-FT	
NEMA Design Code	B		KVA Code	F	Starting Current	168 A
Service Factor (S.F.)	1		No-load Current	6.91 A		
NEMA Nom. Eff.	91.7	Power Factor	90		Line-line Res. @ 25°C	0.295 Ω
Rating - Duty	40C		AMB-CONT	Temp. Rise @ Rated Load	55°C	
S.F. Amps				Temp. Rise @ S.F. Load	69°C	
				Locked-rotor Power Factor	26.3	
				Rotor inertia	2.06 LB-FT <sup>2</sup>	

**Load Characteristics 380 V, 50 Hz, 20 HP**

% of Rated Load	25	50	75	100	125	150
Power Factor	67	82	88	90	90	90
Efficiency	88.7	92	92.2	91.5	90.4	89
Speed	2982	2966	2946	2926	2904	2878
Line amperes	9.81	14.92	21.05	27.48	34.66	42.37



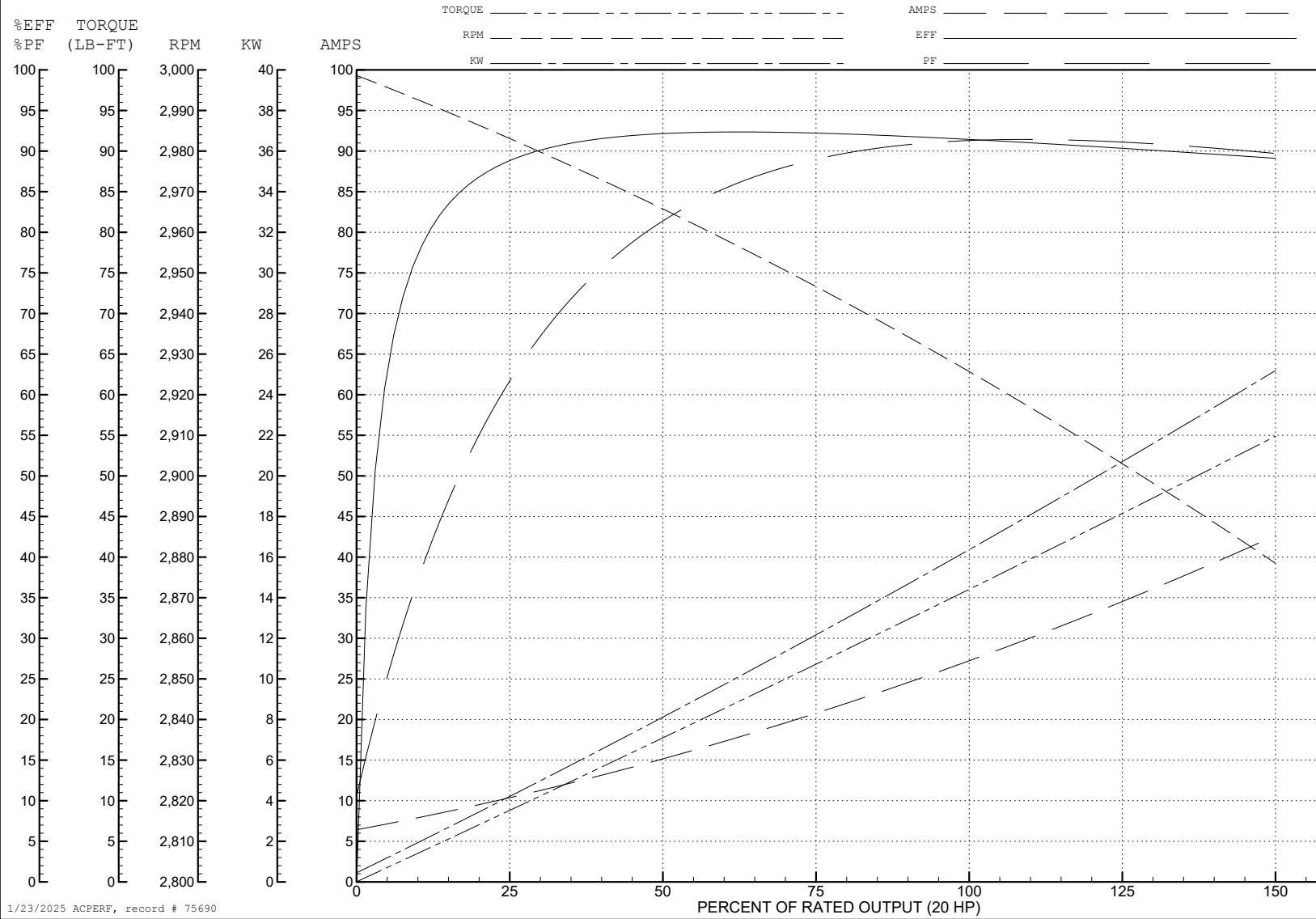
ABB Motors and Mechanical Inc.

WINDING # 10WGZ273

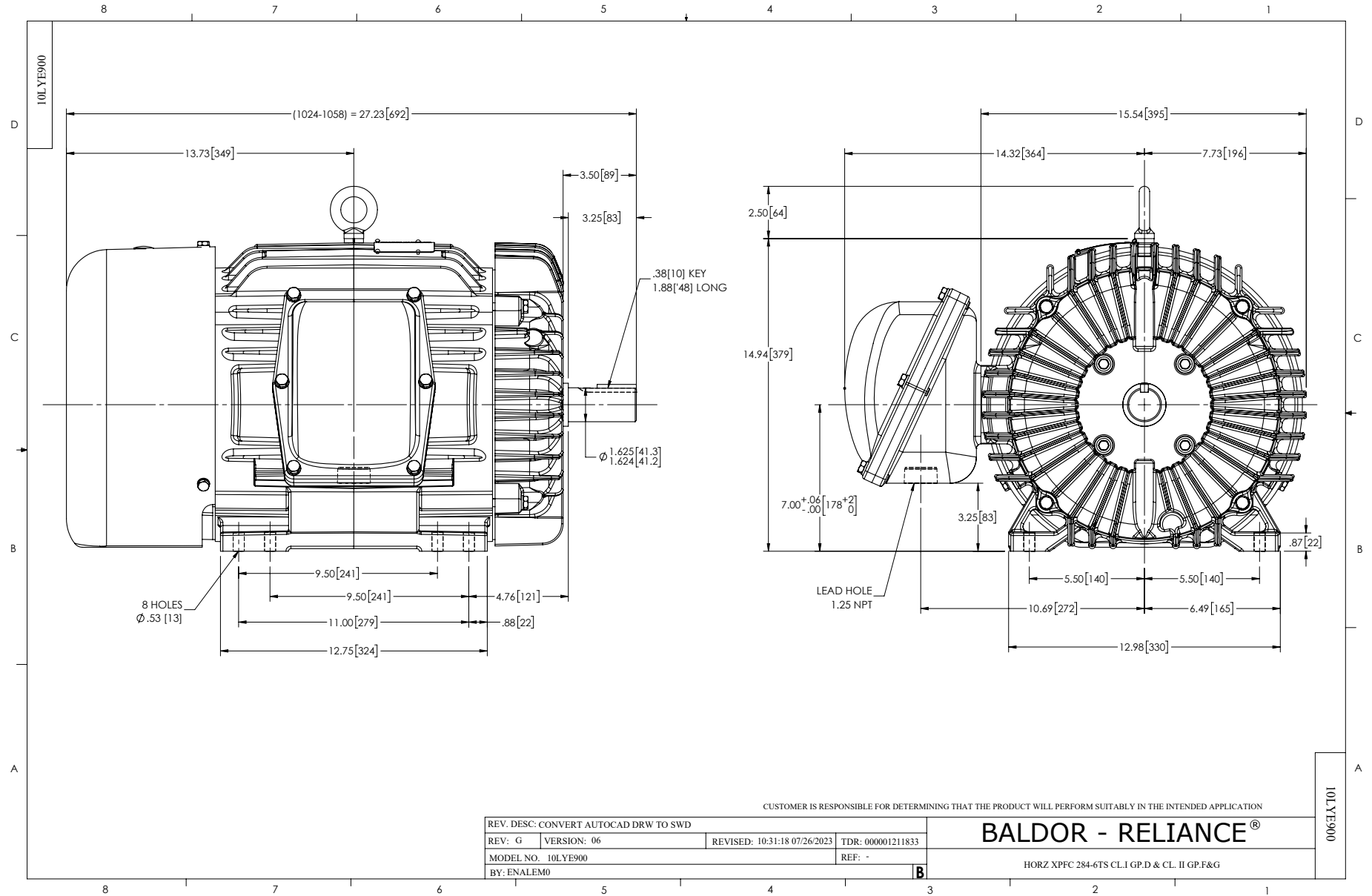
Typical performance - not guaranteed values.

20 HP 3 PH 50 HZ 2926 RPM 380 V 1048M

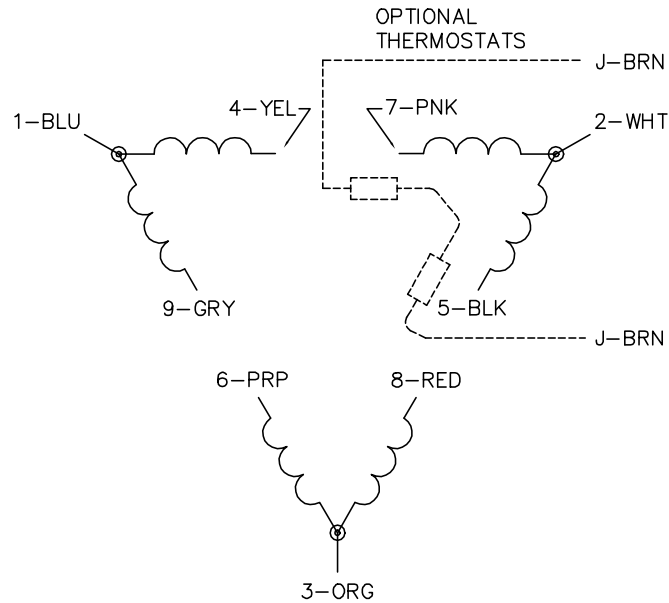
TORQUES (LB-FT): PO=100 PU=44.79 LR=57.45 LRA=168



1/23/2025 ACPERF, record # 75690



CD0180



LOW VOLTAGE  
(2D)



HIGH VOLTAGE  
(1D)



**NOTES:**

1. INTERCHANGE ANY TWO LINE LEADS TO REVERSE ROTATION.
2. OPTIONAL THERMOSTATS ARE PROVIDED WHEN SPECIFIED.
3. ACTUAL NUMBER OF INTERNAL PARALLEL CIRCUITS MAY BE A MULTIPLE OF THOSE SHOWN ABOVE.
4. LEAD COLORS ARE OPTIONAL. LEADS MUST ALWAYS BE NUMBERED AS SHOWN.

CD0180

REV. DESC: ADD CLASS CONN00000007		
REV. LTR: D	VERSION: 01	TDR: 000001099922
FILE: \AAA\00005\148	REVISED: 10: 25: 29 02/19/2019	BY: ENBRIRO
MTL: -	© □	

**BALDOR - RELIANCE®**

3PH, DV, 9 LEADS, DELTA CONNECTION

SH 1 of 1