



Customer information packet

XM25225T-G

20HP, 3510RPM, 3PH, 60HZ, 256T, 0954M, XPFC, F1

Class - CLI GP C,D; CLII GP F,G

Division - Division I

Specifications

Enclosure	XPFC
Frame	256T
Frame Material	Iron
Frequency	60.00 Hz
Haz Area Class and Group	CLI GP C,D; CLII GP F,G
Haz Area Division	Division I
Motor Letter Type	Three Phase
Output @ Frequency	20.000 HP @ 60 HZ
Phase	3
Synchronous Speed @ Frequency	3600 RPM @ 60 HZ
Voltage @ Frequency	460.0 V @ 60 HZ 230.0 V @ 60 HZ
Agency Approvals	CSA EEV UL
Ambient Temperature	40 °C
Auxillary Box	No Auxillary Box
Auxillary Box Lead Termination	None
Base Indicator	Rigid
Bearing Grease Type	Polyrex EM (-20F +300F)
Blower	None
Constant Torque Speed Range	6
Current @ Voltage	22.000 A @ 460.0 V 44.000 A @ 230.0 V
Design Code	B
Drip Cover	No Drip Cover
Duty Rating	CONT
Efficiency @ 100% Load	91.0 %
Electrically Isolated Bearing	Not Electrically Isolated
Enclosure Modification	Severe Duty Features
Feedback Device	NO FEEDBACK
Front Shaft Indicator	None
Haz Area Temp Code	T3C

Part detail

Revision	M
Type	AC
Mech. spec.	09N170
Base	
Status	PRD/A
Elec. spec.	09WGT095
Layout	09LYN170
Eff. date	11-14-2023
CD Diagram	CD0005
Poles	02
Leads	9#10
Proprietary	False
Created date	03-27-2018

Heater Indicator	No Heater
High Voltage Full Load Amps	22.0 a
Insulation Class	F
Inverter Code	Inverter Duty
IP Rating	NONE
KVA Code	G
Lifting Lugs	Standard Lifting Lugs
Locked Bearing Indicator	Locked Bearing
Max Speed	5400 rpm
Motor Lead Quantity/Wire Size	9 @ 10 AWG
Motor Lead Termination	Flying Leads
Motor Standards	NEMA
Motor Type	X0954M
Mounting Arrangement	F1
Number of Poles	2
Overall Length	25.50 IN
Power Factor	91
Product Family	Hazardous Location Motor
Pulley End Bearing Type	Ball
Pulley Face Code	Standard
Pulley Shaft Indicator	Standard
Rodent Screen	None
RoHS Status	ROHS NON-COMPLIANT
Service Factor	1.00
Shaft Diameter	1.625 IN
Shaft Ground Indicator	Shaft Grounding
Shaft Rotation	Reversible
Shaft Slinger Indicator	No Slinger
Speed	3510 rpm
Speed Code	Single Speed
Starting Method	Direct on line
Thermal Device - Bearing	None
Thermal Device - Winding	Normally Closed Thermostat
Vibration Sensor Indicator	No Vibration Sensor

Winding Thermal 1

None

Winding Thermal 2

None

Nameplate

NP0681XPSLEV										
NO.		CC	010A							
S/N		TEMP CODE	T3C							
SPEC.	09N170T095G1		INV.TYPE	PWM						
CAT.NO.	XM25225T-G		C HP FR	60	C HP TO	90				
HP	20		CT HZ FROM	6	CT HZ TO	60				
VOLTS	230/460		VT HZ FROM	6	VT HZ TO	60				
AMPS	44/22		MAG CUR	10/5						
RPM	3510		MX RPM	5400						
HZ	60	PH	3	CL	F	NOM.EFF.	91			
SER.F.	1.00	DES	B	SL HZ	1.5	WK2	1.38			
FRAME	256T	RATING	40C AMB-CONT							
	INVERTER OPERATION ONLY									
	1.15SF ON SINEWAVE									

AC Induction Motor Performance Data

Record # 101814

Typical performance - not guaranteed values

Winding: 09WGT095-R012		Type: 0954M		Enclosure: XPFC	
Nameplate Data			460 V, 60 Hz: High Voltage Connection		
Rated Output (HP)	20	Full Load Torque	30.1 LB-FT		
Volts	230/460	Start Configuration	direct on line		
Full Load Amps	44/22	Breakdown Torque	101 LB-FT		
R.P.M.	3510	Pull-up Torque	33.7 LB-FT		
Hz	60 Phase	3	Locked-rotor Torque	43.9 LB-FT	
NEMA Design Code	B KVA Code	G	Starting Current	145 A	
Service Factor (S.F.)		1	No-load Current	4.81 A	
NEMA Nom. Eff.	91 Power Factor	91	Line-line Res. @ 25°C	0.455 Ω	
Rating - Duty	40C AMB-CONT		Temp. Rise @ Rated Load	68°C	
			Locked-rotor Power Factor	27.4	
			Rotor inertia	1.38 lb-ft ²	

Load Characteristics 460 V, 60 Hz, 20 HP

% of Rated Load	25	50	75	100	125	150
Power Factor	72	87	91	91	92	92
Efficiency	91.3	93.1	93.1	92	90.6	88.7
Speed	3580	3560	3538	3514	3487	3454
Line amperes	7.42	11.8	16.7	22.4	28.4	34.7

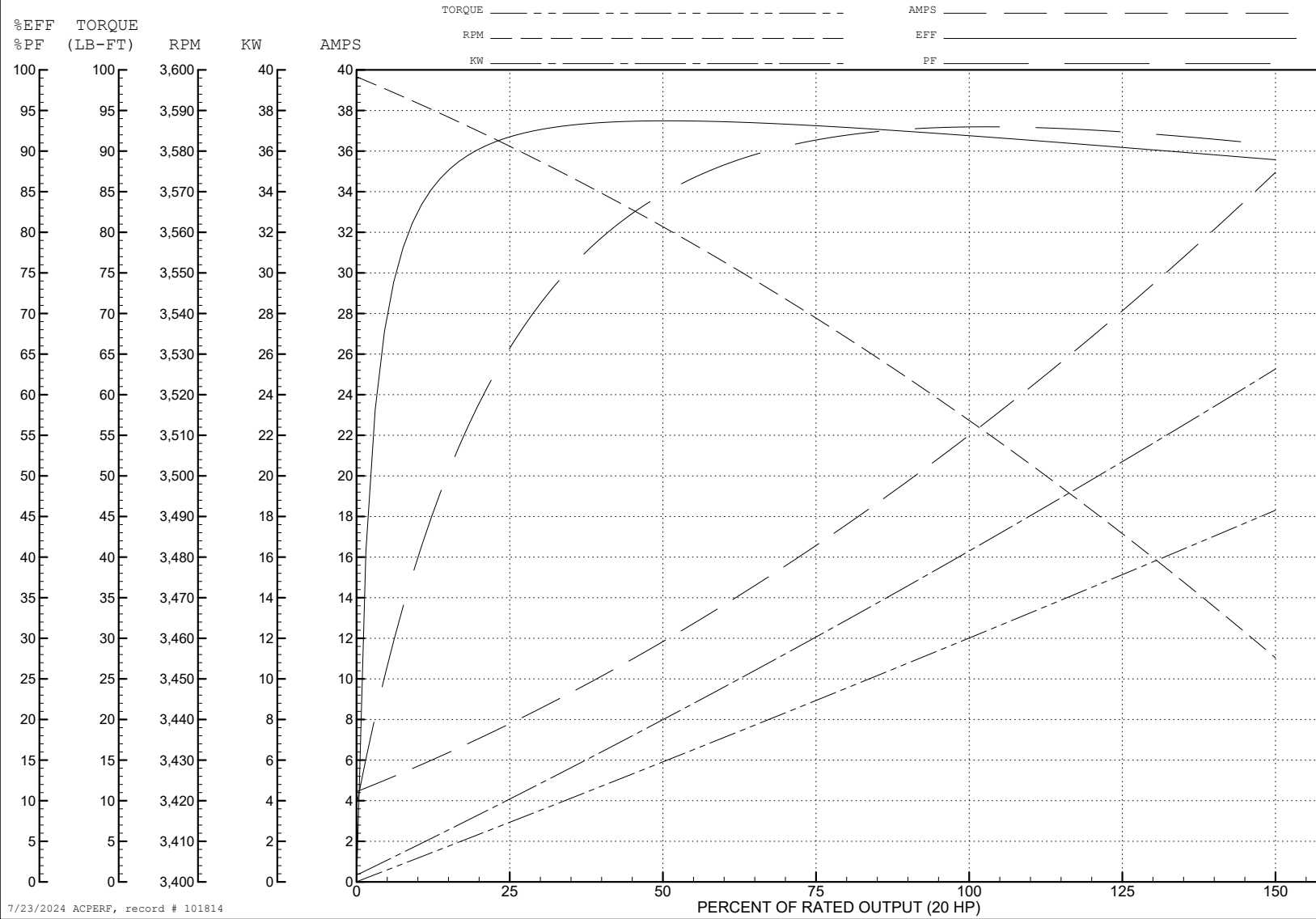
ABB Motors and Mechanical Inc.

WINDING # 09WGT095

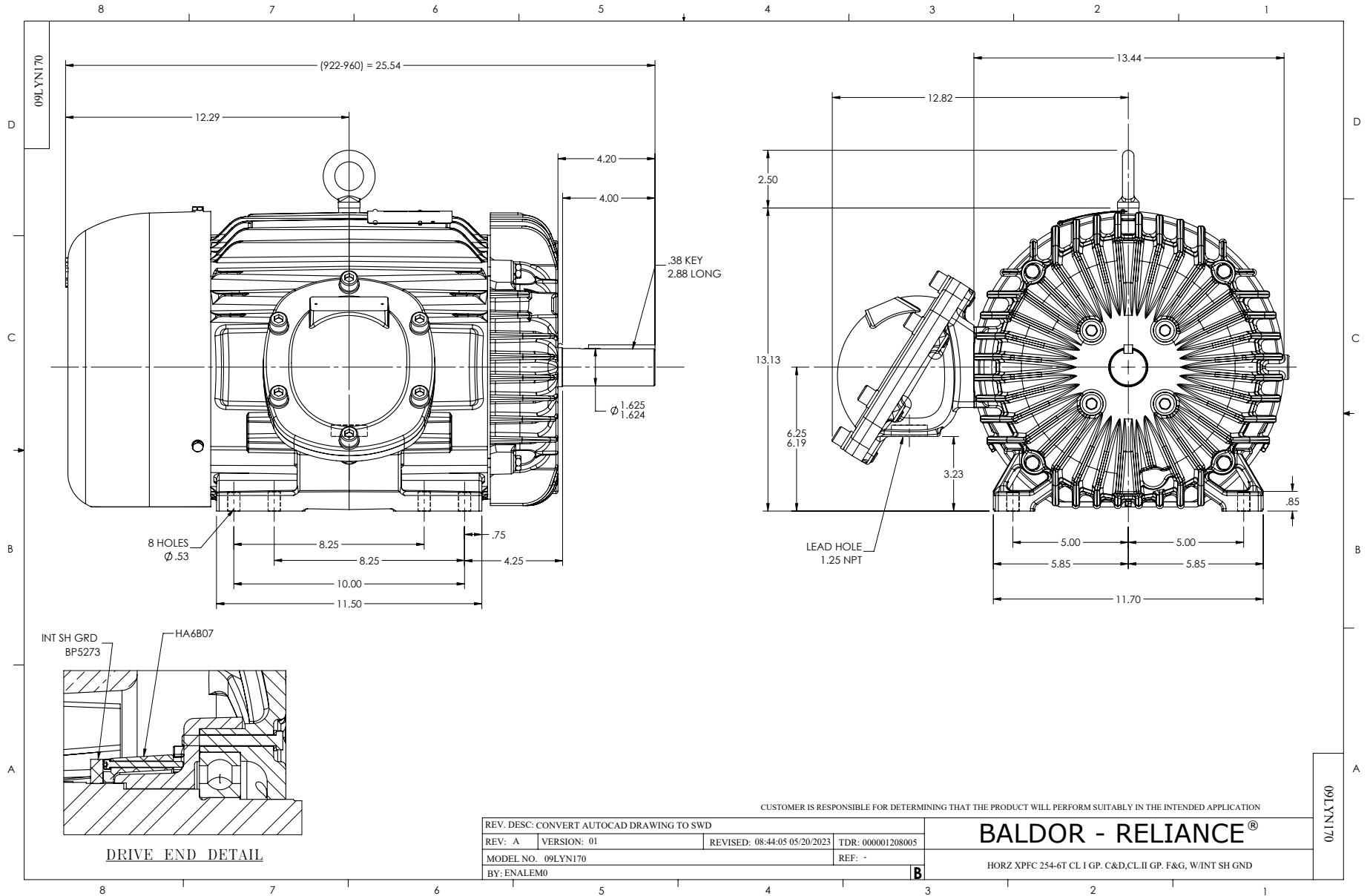
20 HP 3 PH 60 HZ 3510 RPM 460 V 0954M

Typical performance - not guaranteed values.

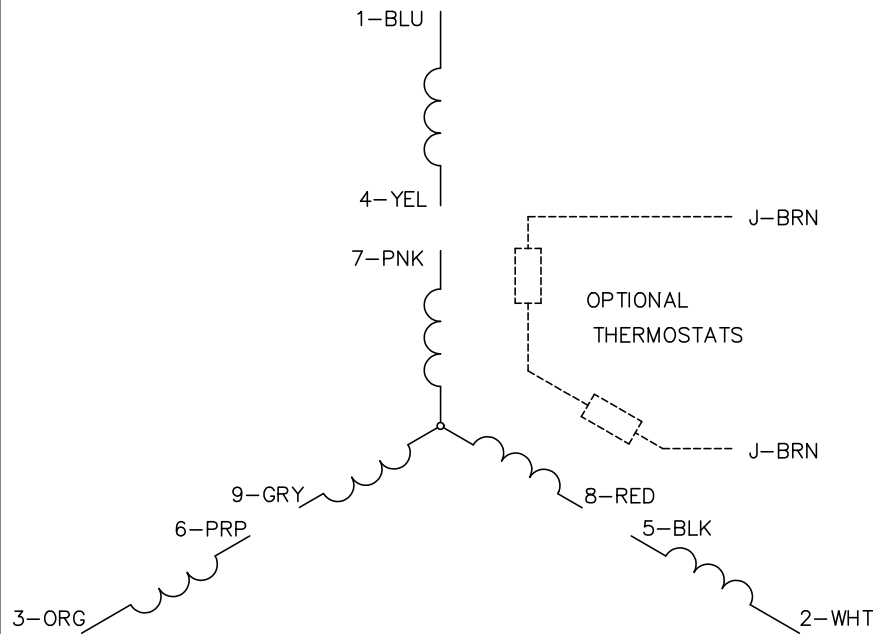
TORQUES (LB-FT): PO=101 PU=33.7 LR=43.9 LRA=145



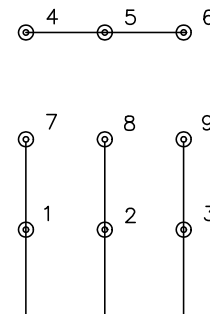
7/23/2024 ACPERF, record # 101814



CD0005



LOW VOLTAGE
(2Y)



LINE

HIGH VOLTAGE
(1Y)



LINE

NOTES:

1. INTERCHANGE ANY TWO LINE LEADS TO REVERSE ROTATION.
2. OPTIONAL THERMOSTATS ARE PROVIDED WHEN SPECIFIED.
3. ACTUAL NUMBER OF INTERNAL PARALLEL CIRCUITS MAY BE A MULTIPLE OF THOSE SHOWN ABOVE.
4. LEAD COLORS ARE OPTIONAL. LEADS MUST ALWAYS BE NUMBERED AS SHOWN.

REV. DESC: REVISE TO SHOW OPTIONAL COLORS			
REV. LTR: E	BY: JLP	REVISED: 01/19/99 10:15	TDR: 0171435
S00000		FILE: AAA00005140	MDL: -
		MTL: -	

BALDOR ELECTRIC Co.

3PH, DV, 9 LEADS

CD0005