



---

# Customer information packet

## XM21722T

7.5HP, 3520RPM, 3PH, 60HZ, 213T, XPFC, F1

Class - CLI GP D; CLII GP F,G

Division - Division I

## Specifications

Enclosure	XPFC
Frame	213T
Frame Material	Steel
Frequency	50.00 Hz 60.00 Hz
Motor Letter Type	Three Phase
Output @ Frequency	5.000 HP @ 50 HZ 7.500 HP @ 60 HZ
Phase	3
Synchronous Speed @ Frequency	3600 RPM @ 60 HZ
Voltage @ Frequency	460.0 V @ 60 HZ 380.0 V @ 50 HZ 230.0 V @ 60 HZ 190.0 V @ 50 HZ
XP Class and Group	CLI GP D; CLII GP F,G
XP Division	Division I
Agency Approvals	UR CSA CSA EEV
Ambient Temperature	40 °C
Auxillary Box	No Auxillary Box
Auxillary Box Lead Termination	None
Base Indicator	Rigid
Bearing Grease Type	Polyrex EM (-20F +300F)
Blower	None
Constant Torque Speed Range	6
Current @ Voltage	8.700 A @ 460.0 V 17.400 A @ 230.0 V
Design Code	B
Drip Cover	No Drip Cover
Duty Rating	CONT
Efficiency @ 100% Load	89.5 %

## Part detail

Revision	D
Type	AC
Mech. spec.	
Base	
Status	PRD/A
Elec. spec.	37WGR752
Layout	37LYN517
Eff. date	12-09-2021
CD Diagram	CD0005
Poles	02
Leads	9#14
Proprietary	False
Created date	04-22-2019

<b>Electrically Isolated Bearing</b>	Not Electrically Isolated
<b>Feedback Device</b>	NO FEEDBACK
<b>Heater Indicator</b>	No Heater
<b>High Voltage Full Load Amps</b>	8.7 a
<b>Insulation Class</b>	F
<b>Inverter Code</b>	Not Inverter
<b>IP Rating</b>	NONE
<b>KVA Code</b>	H
<b>Lifting Lugs</b>	Standard Lifting Lugs
<b>Locked Bearing Indicator</b>	Locked Bearing
<b>Max Speed</b>	5400 rpm
<b>Motor Lead Termination</b>	Flying Leads
<b>Motor Standards</b>	NEMA
<b>Motor Type</b>	3728M
<b>Mounting Arrangement</b>	F1
<b>Number of Poles</b>	2
<b>Overall Length</b>	18.19 IN
<b>Power Factor</b>	87
<b>Product Family</b>	General Purpose
<b>Pulley End Bearing Type</b>	Ball
<b>Pulley Face Code</b>	Standard
<b>Rodent Screen</b>	None
<b>Service Factor</b>	1.00
<b>Shaft Diameter</b>	1.375 IN
<b>Shaft Ground Indicator</b>	No Shaft Grounding
<b>Shaft Rotation</b>	Reversible
<b>Speed</b>	3520 rpm
<b>Speed Code</b>	Single Speed
<b>Starting Method</b>	Direct on line
<b>Thermal Device - Bearing</b>	None
<b>Thermal Device - Winding</b>	Normally Closed Thermostat
<b>Vibration Sensor Indicator</b>	No Vibration Sensor
<b>Winding Thermal 1</b>	None
<b>Winding Thermal 2</b>	None

**XP Temp Code**

**T3C**

---

**Nameplate**

**NP0887XPSLEV**

<b>NO.</b>		<b>CC</b>	010A		
<b>S/N</b>		<b>TEMP CODE</b>	T3C		
<b>SPEC.</b>	37-0000-0053	<b>INV.TYPE</b>	PWM		
<b>CAT.NO.</b>	XM21722T	<b>C HP FR</b>	60	<b>C HP TO</b>	90
<b>HP</b>	7.5//5	<b>CT HZ FROM</b>	6	<b>CT HZ TO</b>	60
<b>VOLTS</b>	230/460//190/380	<b>VT HZ FROM</b>	6	<b>VT HZ TO</b>	60
<b>AMPS</b>	17.4/8.7	<b>MAG CUR</b>	6/3		
<b>RPM</b>	3520//2900	<b>MX RPM</b>	5400		
<b>HZ</b>	60//50	<b>PH</b>	3	<b>CL</b>	F
		<b>NOM.EFF.</b>	89.5		
<b>SER.F.</b>	1.00	<b>DES</b>	B	<b>SL HZ</b>	1.3
		<b>WK2</b>	0.255		
<b>FRAME</b>	213T	<b>RATING</b>	40C AMB-CONT		
	55C AMB @ 1.0 SF				
	1.15 SF ON SINEWAVE		NEMA MG-1 PT 5,IP54		

## AC Induction Motor Performance Data

Record # 75638

Typical performance - not guaranteed values

Winding: 37WGR752-R001		Type: 3728M	Enclosure: XPFC	
<b>Nameplate Data</b>			<b>460 V, 60 Hz: High Voltage Connection</b>	
Rated Output (HP)	7.5	Full Load Torque	10.9 LB-FT	
Volts	230/460	Start Configuration	direct on line	
Full Load Amps	17.4/8.7	Breakdown Torque	36.9 LB-FT	
R.P.M.	3520	Pull-up Torque	18.6 LB-FT	
Hz	60 Phase	3	Locked-rotor Torque	19.7 LB-FT
NEMA Design Code	B KVA Code	H	Starting Current	62.3 A
Service Factor (S.F.)	1.15	No-load Current	3.16 A	
NEMA Nom. Eff.	89.5 Power Factor	87	Line-line Res. @ 25°C	1.21 Ω
Rating - Duty	40C AMB-CONT	Temp. Rise @ Rated Load	46°C	
S.F. Amps		Temp. Rise @ S.F. Load	56°C	
		Locked-rotor Power Factor	32.9	
		Rotor inertia	0.255 LB-FT <sup>2</sup>	

## Load Characteristics 460 V, 60 Hz, 7.5 HP

% of Rated Load	25	50	75	100	125	150	S.F.
Power Factor	50	74	83	87	89	90	88
Efficiency	82	89	90.4	90.6	89.7	89.2	90.1
Speed	3579	3560	3537	3514	3488	3460	3498
Line amperes	3.74	4.97	6.71	8.67	10.8	13	9.95

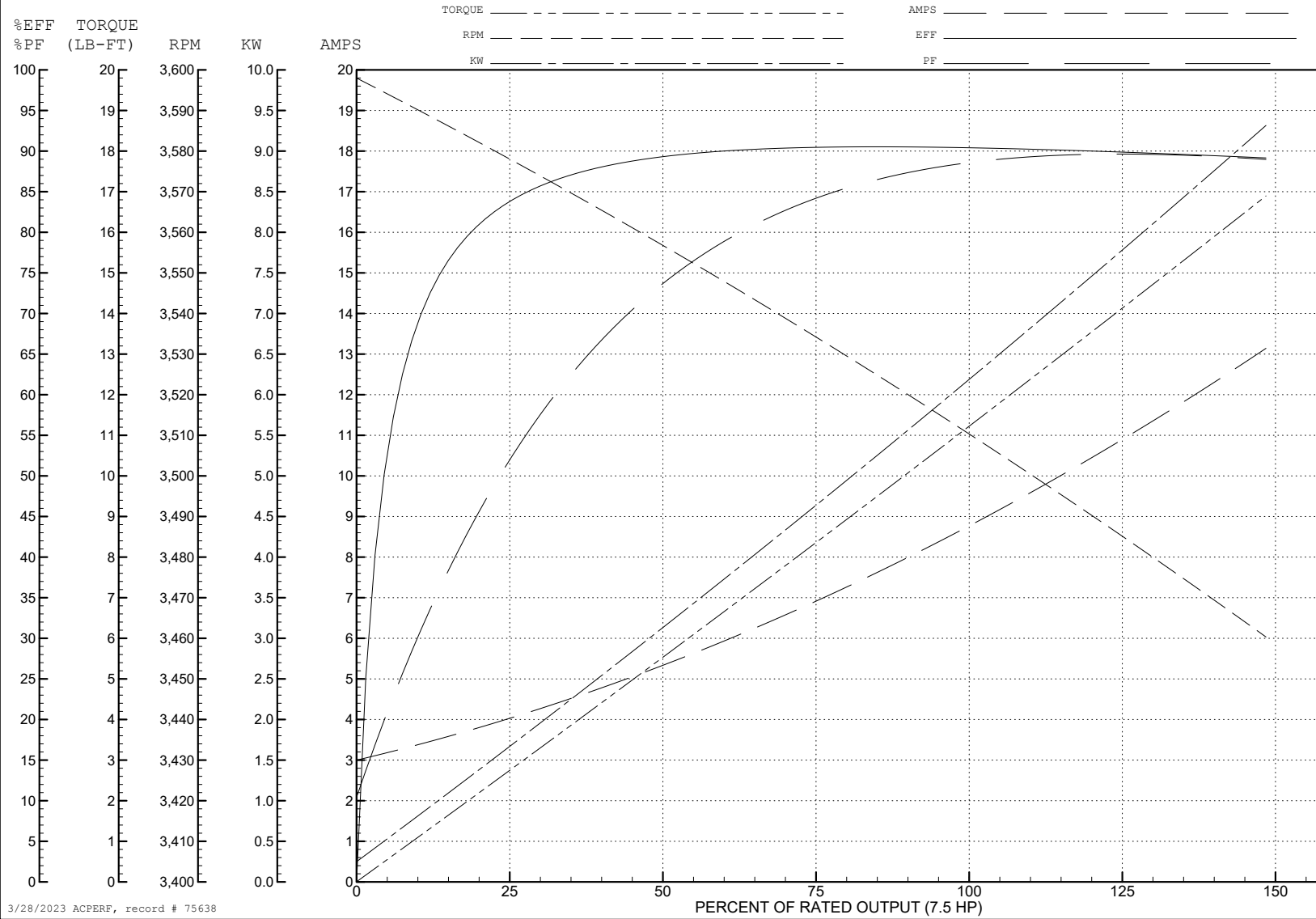
ABB Motors and Mechanical Inc.

WINDING # 37WGR752

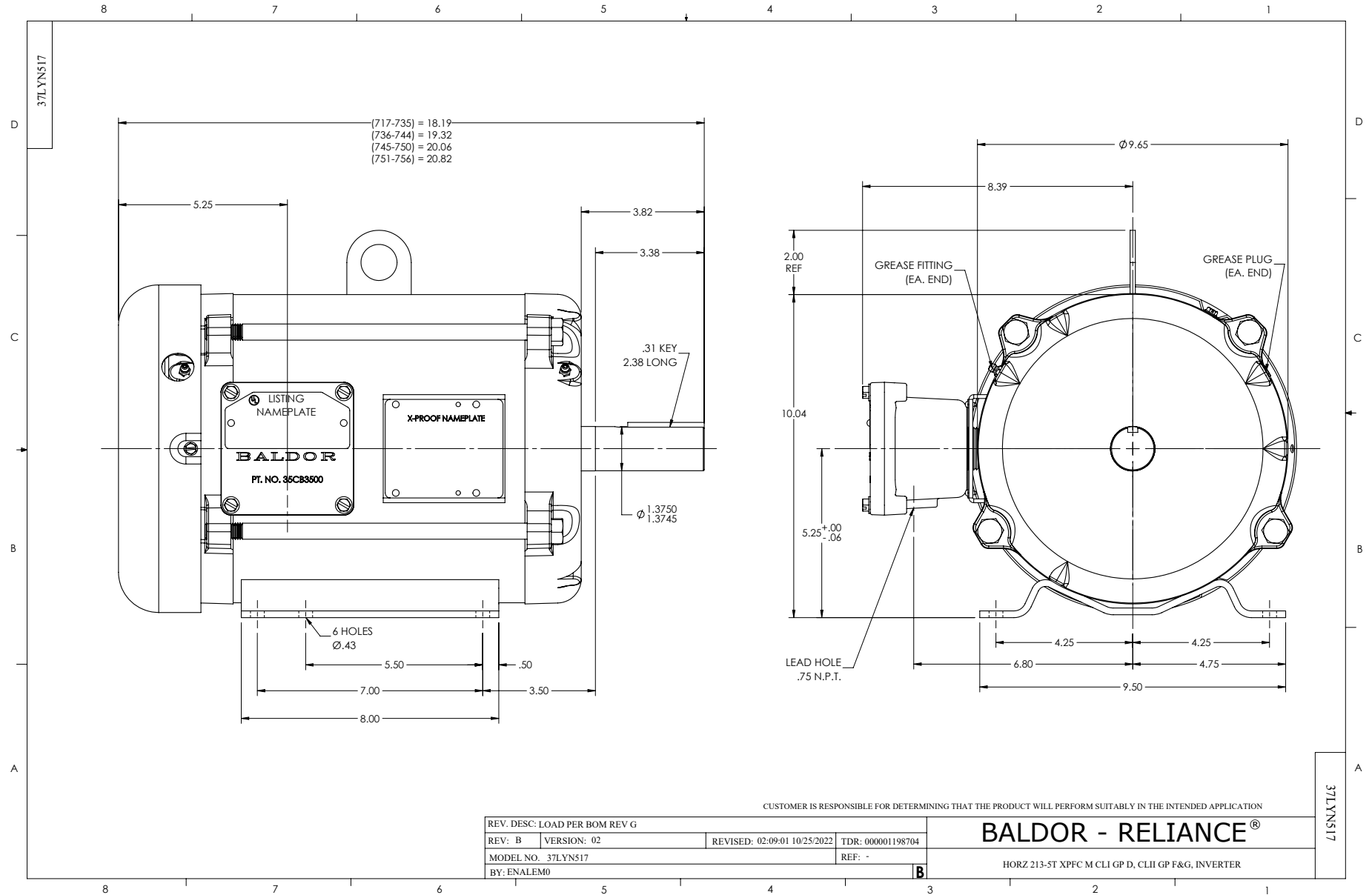
Typical performance - not guaranteed values.

7.5 HP 3 PH 60 HZ 3520 RPM 460 V 3728M

TORQUES (LB-FT): PO=36.9 PU=18.6 LR=19.7 LRA=62.3

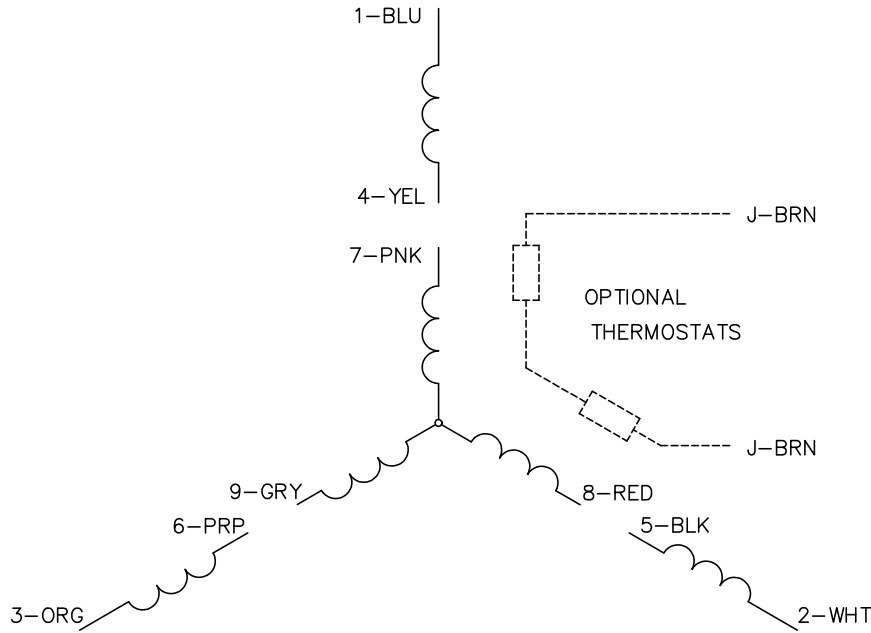


3/28/2023 ACPERF, record # 75638

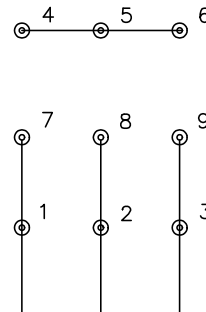




CD0005

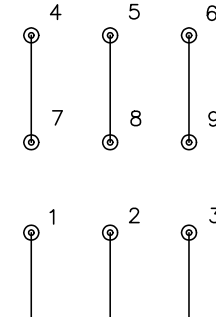


LOW VOLTAGE  
(2Y)



LINE

HIGH VOLTAGE  
(1Y)



LINE

NOTES:

1. INTERCHANGE ANY TWO LINE LEADS TO REVERSE ROTATION.
2. OPTIONAL THERMOSTATS ARE PROVIDED WHEN SPECIFIED.
3. ACTUAL NUMBER OF INTERNAL PARALLEL CIRCUITS MAY BE A MULTIPLE OF THOSE SHOWN ABOVE.
4. LEAD COLORS ARE OPTIONAL. LEADS MUST ALWAYS BE NUMBERED AS SHOWN.

CD0005

REV. DESC: REVISE TO SHOW OPTIONAL COLORS			
REV. LTR: E	BY: JLP	REVISED: 01/19/99 10:15	TDR: 0171435
S00000		FILE: AAA00005140	MDL: -
		MTL: -	

**BALDOR ELECTRIC Co.**

3PH, DV, 9 LEADS