

ABB BALDOR RELIANCE III

Customer information packet

XM21562T

5HP, 1165//975RPM, 3PH, 60HZ, 215T, XPFC, F1

Class - CLI GP D; CLII GP F,G

Division - Division I

Specifications

Enclosure	XPFC
Frame	215T
Frame Material	Steel
Frequency	50.00 Hz 60.00 Hz
Haz Area Class and Group	CL I GP D; CL II GP F,G
Haz Area Division	Division I
Motor Letter Type	Three Phase
Output @ Frequency	5.000 HP @ 60 HZ 3.000 HP @ 50 HZ
Phase	3
Synchronous Speed @ Frequency	1200 RPM @ 60 HZ
Voltage @ Frequency	460.0 V @ 60 HZ 190.0 V @ 50 HZ 230.0 V @ 60 HZ 380.0 V @ 50 HZ
Agency Approvals	UL CSA EEV
Ambient Temperature	40 °C
Auxiliary Box	NO AUXILLARY BOX
Auxiliary Box Lead Termination	None
Base Indicator	Rigid
Bearing Grease Type	Polyrex EM (-20F +300F)
Blower	None
Constant Torque Speed Range	6
Current @ Voltage	11.900 A @ 190.0 V 14.400 A @ 230.0 V 5.900 A @ 380.0 V 7.200 A @ 460.0 V
Design Code	A
Drip Cover	No Drip Cover
Duty Rating	CONT

Part Detail

Revision	D
Type	AC
Mech. spec.	
Base	
Status	PRD/A
Elec. spec.	37WGQ067
Layout	37LYN517
Eff. date	05-25-2021
CD Diagram	CD0005
Poles	06
Leads	9#14
Proprietary	False
Created date	04-04-2019

Efficiency @ 100% Load	89.5 %
Electrically Isolated Bearing	Not Electrically Isolated
Feedback Device	NO FEEDBACK
Haz Area Temp Code	T3C
Heater Indicator	No Heater
High Voltage Full Load Amps	5.9 a
Insulation Class	F
Inverter Code	Inverter Duty
IP Rating	NONE
KVA Code	K
Lifting Lugs	Standard Lifting Lugs
Locked Bearing Indicator	Locked Bearing
Max Speed	1800 rpm
Motor Lead Termination	Flying Leads
Motor Standards	NEMA
Motor Type	3752M
Mounting Arrangement	F1
Number of Poles	6
Overall Length	20.82 IN
Power Factor	71
Product Family	General Purpose
Pulley Face Code	Standard
Rodent Screen	None
RoHS Status	ROHS NON-COMPLIANT
Service Factor	1.00
Shaft Diameter	1.375 IN
Shaft Ground Indicator	No Shaft Grounding
Shaft Rotation	Reversible
Speed	1165 rpm
Speed Code	Single Speed
Starting Method	Direct on line
Thermal Device - Bearing	None
Thermal Device - Winding	Normally Closed Thermostat
Vibration Sensor Indicator	No Vibration Sensor

Winding Thermal 1

None

Winding Thermal 2

None

Nameplate

NP0887XPSLEV

NO.		CC	010A		
S/N		TEMP CODE	T3C		
SPEC.	37-0000-0042	INV.TYPE	PWM		
CAT.NO.	XM21562T	C HP FR	60	C HP TO	90
HP	5//3	CT HZ FROM	6	CT HZ TO	60
VOLTS	230/460//190/380	VT HZ FROM	6	VT HZ TO	60
AMPS	14.4/7.2//11.9/5.9	MAG CUR	8/4		
RPM	1165//975	MX RPM	1800		
HZ	60//50	PH	3	CL	F
		NOM.EFF.	89.5		
SER.F.	1.00	DES	A	SL HZ	1.8
		WK2	1.29		
FRAME	215T	RATING	40C AMB-CONT		
	55C AMB @ 1.0 SF				
	1.15 SF SINEWAVE		NEMA MG-1 PT 5,IP54		

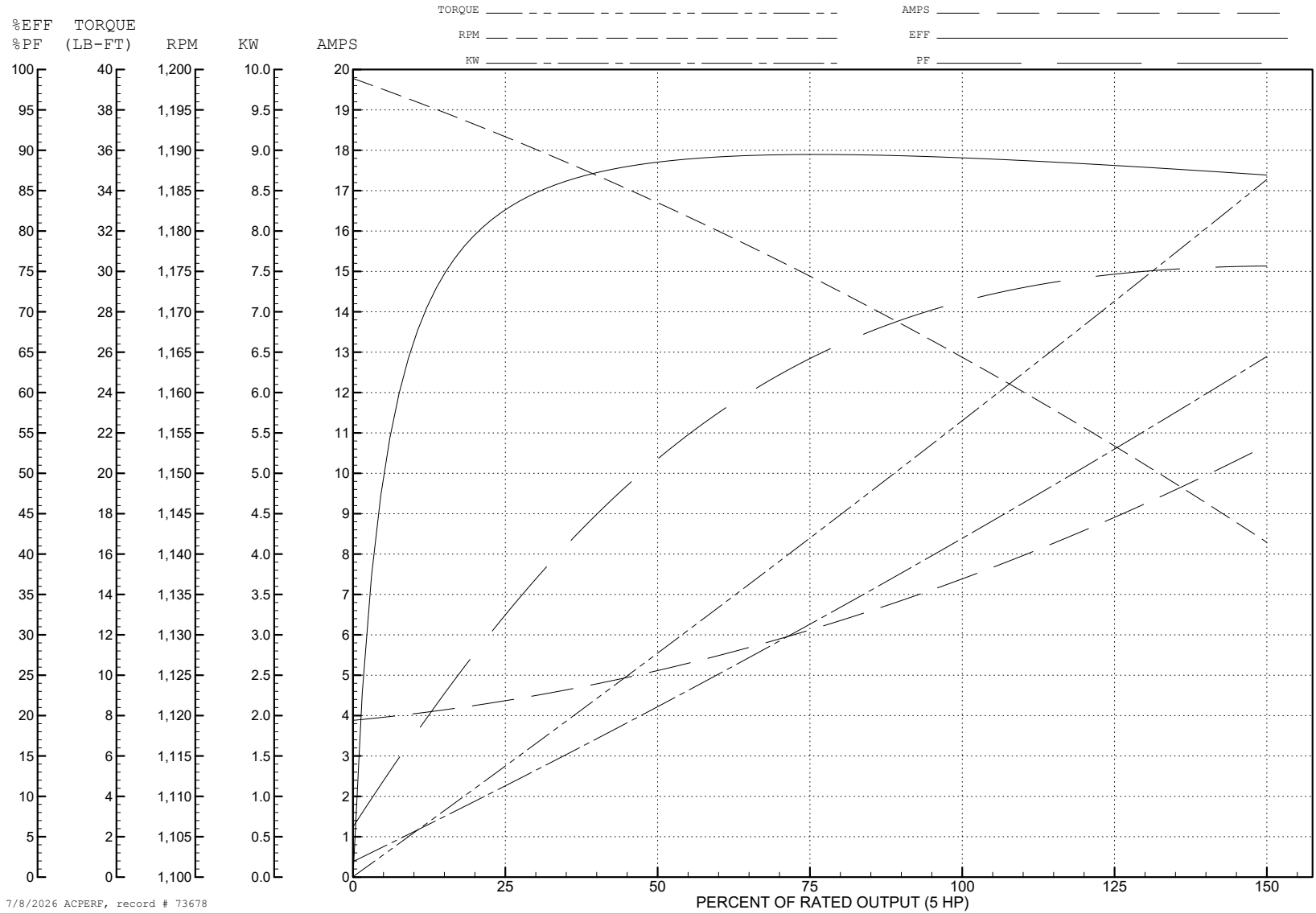
ABB Motors and Mechanical Inc.

WINDING # 37WGQ067

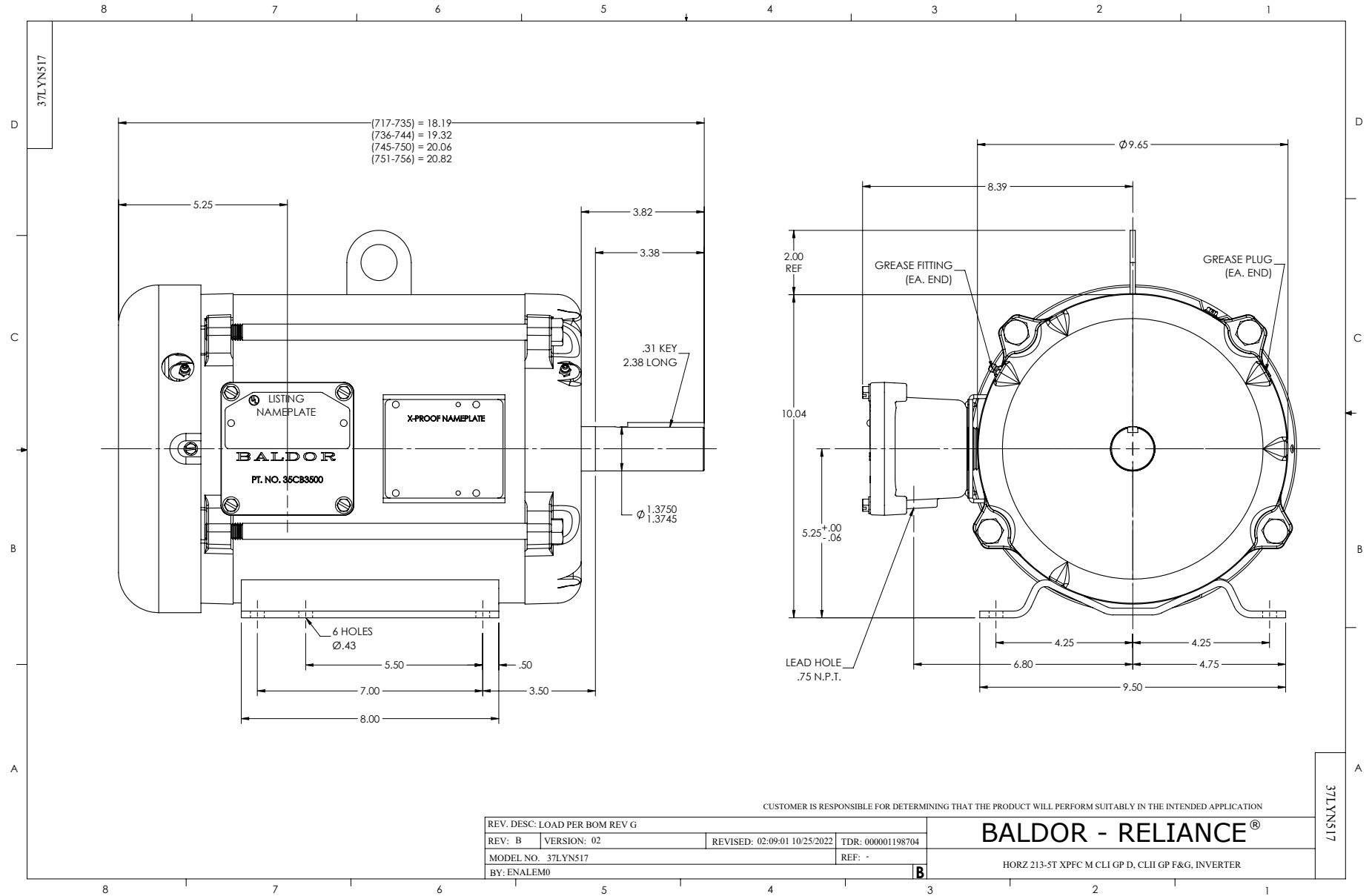
Typical performance - not guaranteed values.

5 HP 3 PH 60 HZ 1165 RPM 460 V 3752M

TORQUES (LB-FT): PO=83.25 PU=52.2 LR=55.5 LRA=55.3



7/8/2026 ACPERF, record # 73678



CD0005



LOW VOLTAGE
(2Y)



LINE

HIGH VOLTAGE
(1Y)



LINE

NOTES:

1. INTERCHANGE ANY TWO LINE LEADS TO REVERSE ROTATION.
2. OPTIONAL THERMOSTATS ARE PROVIDED WHEN SPECIFIED.
3. ACTUAL NUMBER OF INTERNAL PARALLEL CIRCUITS MAY BE A MULTIPLE OF THOSE SHOWN ABOVE.
4. LEAD COLORS ARE OPTIONAL. LEADS MUST ALWAYS BE NUMBERED AS SHOWN.

CD0005

REV. DESC: REVISE TO SHOW OPTIONAL COLORS			
REV. LTR: E	BY: JLP	REVISED: 01/19/99 10:15	TDR: 0171435
S00000		FILE: AAA00005140	MDL: -
		MTL: -	

BALDOR ELECTRIC Co.

3PH, DV, 9 LEADS