

BALDOR • RELIANCE

Customer information packet

XM21142T

10HP, 1770//1475RPM, 3PH, 60HZ, 215T, XPFC, F1

Class - CLI GP D; CLII GP F,G

Division - Division I

Specifications

Enclosure	XPFC
Frame	215T
Frame Material	Steel
Frequency	50.00 Hz 60.00 Hz
Haz Area Class and Group	CLI GP D; CLII GP F,G
Haz Area Division	Division I
Motor Letter Type	Three Phase
Output @ Frequency	7.500 HP @ 50 HZ 10.000 HP @ 60 HZ
Phase	3
Synchronous Speed @ Frequency	1800 RPM @ 60 HZ
Voltage @ Frequency	460.0 V @ 60 HZ 190.0 V @ 50 HZ 230.0 V @ 60 HZ 380.0 V @ 50 HZ
Agency Approvals	UL CSA EEV
Ambient Temperature	40 °C
Auxillary Box	No Auxillary Box
Auxillary Box Lead Termination	None
Base Indicator	Rigid
Bearing Grease Type	Polyrex EM (-20F +300F)
Blower	None
Constant Torque Speed Range	15
Current @ Voltage	11.000 A @ 380.0 V 12.000 A @ 460.0 V 22.000 A @ 190.0 V 24.000 A @ 230.0 V
Design Code	A
Drip Cover	No Drip Cover
Duty Rating	CONT

Part detail

Revision	E
Type	AC
Mech. spec.	
Base	
Status	PRD/A
Elec. spec.	37WGS518
Layout	37LYN517
Eff. date	12-09-2021
CD Diagram	CD0005
Poles	04
Leads	9#14
Proprietary	False
Created date	04-01-2019

Efficiency @ 100% Load	91.7 %
Electrically Isolated Bearing	Not Electrically Isolated
Feedback Device	NO FEEDBACK
Haz Area Temp Code	T3C
Heater Indicator	No Heater
High Voltage Full Load Amps	11.0 a
Insulation Class	F
Inverter Code	Inverter Duty
IP Rating	NONE
KVA Code	K
Lifting Lugs	Standard Lifting Lugs
Locked Bearing Indicator	Locked Bearing
Max Speed	2700 rpm
Motor Lead Termination	Flying Leads
Motor Standards	NEMA
Motor Type	3752M
Mounting Arrangement	F1
Number of Poles	4
Overall Length	20.82 IN
Power Factor	85
Product Family	General Purpose
Pulley Face Code	Standard
Rodent Screen	None
RoHS Status	ROHS NON-COMPLIANT
Service Factor	1.00
Shaft Diameter	1.375 IN
Shaft Ground Indicator	No Shaft Grounding
Shaft Rotation	Reversible
Speed	1770 rpm
Speed Code	Single Speed
Starting Method	Direct on line
Thermal Device - Bearing	None
Thermal Device - Winding	Normally Closed Thermostat
Vibration Sensor Indicator	No Vibration Sensor

Winding Thermal 1

None

Winding Thermal 2

None

Nameplate

NP0887XPSLEV

NO.		CC	010A		
S/N		TEMP CODE	T3C		
SPEC.	37-0000-0046	INV.TYPE	PWM		
CAT.NO.	XM21142T	C HP FR	60	C HP TO	90
HP	10//7.5	CT HZ FROM	15	CT HZ TO	60
VOLTS	230/460//190/380	VT HZ FROM	6	VT HZ TO	60
AMPS	24/12//22/11	MAG CUR	7.4/3.7		
RPM	1770//1475	MX RPM	2700		
HZ	60//50	PH	3	CL	F
		NOM.EFF.	91.7		
SER.F.	1.00	DES	A	SL HZ	1
		WK2	1.28		
FRAME	215T	RATING	40C AMB-CONT		
	55C AMB @ 1.0 SF				
	1.15 SF SINEWAVE		NEMA MG-1 PT 5,IP54		

AC Induction Motor Performance Data

Record # 75269

Typical performance - not guaranteed values

Winding: 37WGS518-R018		Type: 3752M		Enclosure: XPFC	
Nameplate Data			460 V, 60 Hz: High Voltage Connection		
Rated Output (HP)	10	Full Load Torque	29.45 LB-FT		
Volts	230/460//190/380	Start Configuration	direct on line		
Full Load Amps	24/12//22/11	Breakdown Torque	134 LB-FT		
R.P.M.	1770//1475	Pull-up Torque	49.2 LB-FT		
Hz	60//50 Phase	3	Locked-rotor Torque	68.7 LB-FT	
NEMA Design Code	A KVA Code	K	Starting Current	103 A	
Service Factor (S.F.)		1	No-load Current	5.49 A	
NEMA Nom. Eff.	91.7 Power Factor	85	Line-line Res. @ 25°C	0.937 Ω	
Rating - Duty		40C AMB-CONT	Temp. Rise @ Rated Load	63°C	
S.F. Amps			Temp. Rise @ S.F. Load	77°C	
			Locked-rotor Power Factor	35.5	
			Rotor inertia	1.28 LB-FT ²	

Load Characteristics 460 V, 60 Hz, 10 HP

% of Rated Load	25	50	75	100	125	150
Power Factor	42	64	76	82	86	88
Efficiency	88.5	92.3	92.7	91.8	90.7	88.9
Speed	1794	1787	1780	1772	1763	1753
Line amperes	6.14	7.8	9.9	12.3	15	17.9

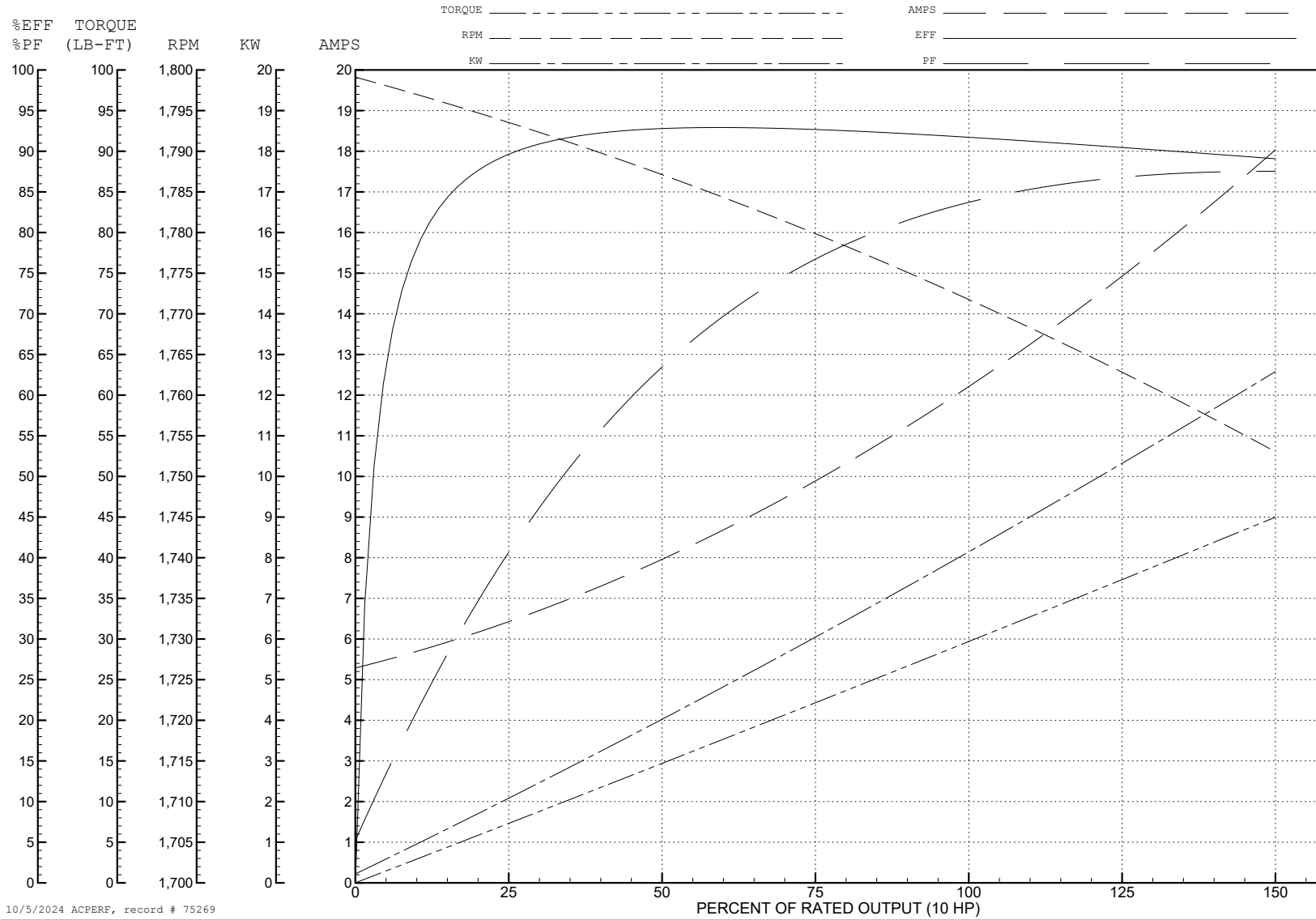
ABB Motors and Mechanical Inc.

WINDING # 37WGS518

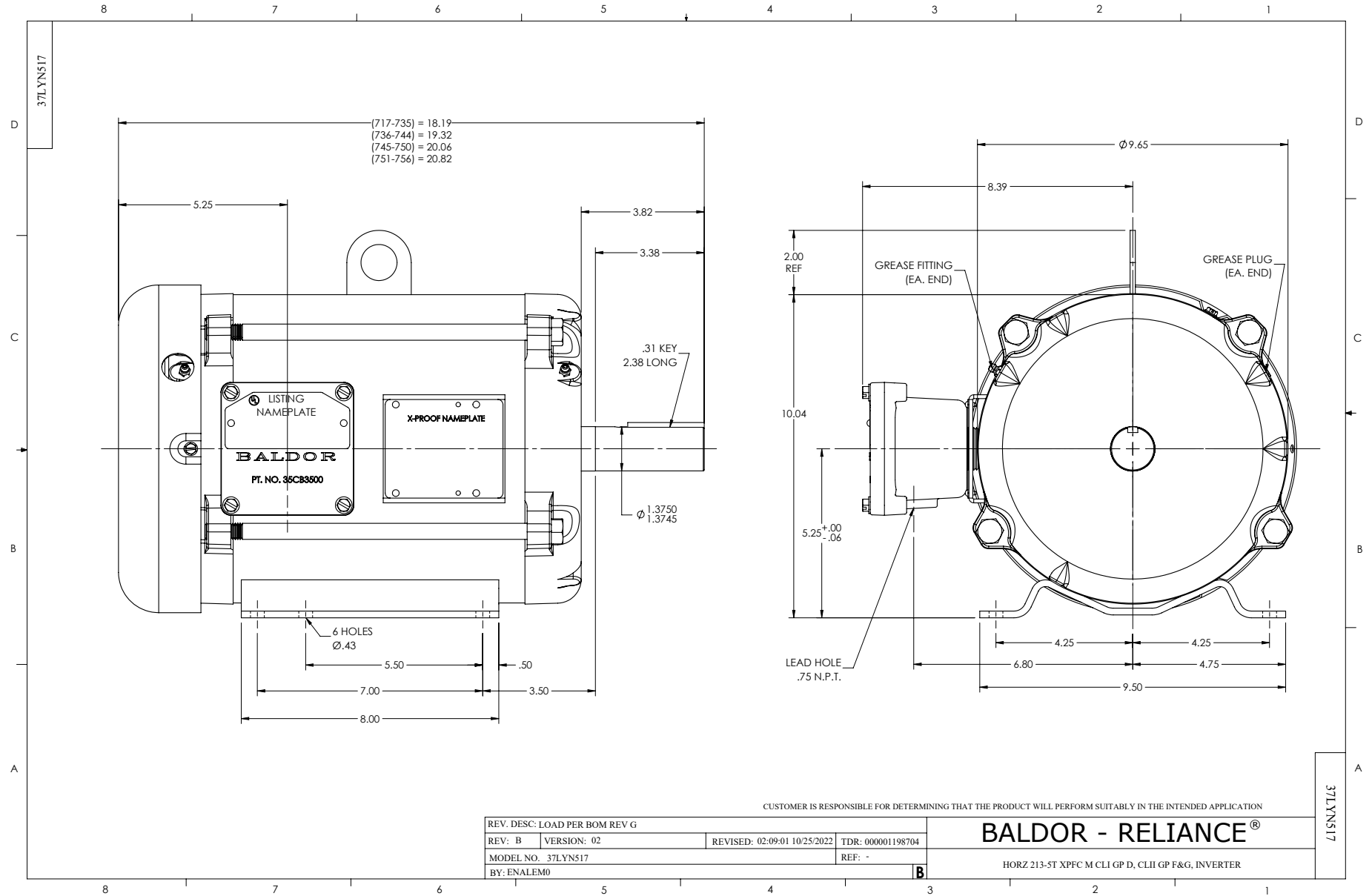
Typical performance - not guaranteed values.

10 HP 3 PH 60 HZ 1772 RPM 460 V 3752M

TORQUES (LB-FT): PO=134 PU=49.2 LR=68.7 LRA=103



10/5/2024 ACPERF, record # 75269



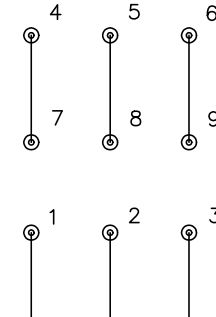
CD0005



LOW VOLTAGE
(2Y)



HIGH VOLTAGE
(1Y)



NOTES:

1. INTERCHANGE ANY TWO LINE LEADS TO REVERSE ROTATION.
2. OPTIONAL THERMOSTATS ARE PROVIDED WHEN SPECIFIED.
3. ACTUAL NUMBER OF INTERNAL PARALLEL CIRCUITS MAY BE A MULTIPLE OF THOSE SHOWN ABOVE.
4. LEAD COLORS ARE OPTIONAL. LEADS MUST ALWAYS BE NUMBERED AS SHOWN.

CD0005

REV. DESC: REVISE TO SHOW OPTIONAL COLORS			
REV. LTR: E	BY: JLP	REVISED: 01/19/99 10:15	TDR: 0171435
S00000		FILE: AAA00005140	MDL: -
		MTL: -	

BALDOR ELECTRIC Co.

3PH, DV, 9 LEADS