

**BALDOR® • RELIANCE™**

---

# Customer information packet

## XM18542T-5

42M 4P XPFC HOR 184T T'STATS INVERTER

Class - CLI GP D; CLII GP F,G

Division - Division I

## Specifications

Enclosure	XPFC
Frame	184T
Frame Material	Steel
Frequency	60.00 Hz
Haz Area Class and Group	CLI GP D; CLII GP F,G
Haz Area Division	Division I
Motor Letter Type	Three Phase
Output @ Frequency	5.000 HP @ 60 HZ
Phase	3
Synchronous Speed @ Frequency	1800 RPM @ 60 HZ
Voltage @ Frequency	575.0 V @ 60 HZ
Agency Approvals	CSA EEV UL
Ambient Temperature	40 °C
Auxillary Box	No Auxillary Box
Auxillary Box Lead Termination	None
Base Indicator	Rigid
Bearing Grease Type	Polyrex EM (-20F +300F)
Blower	None
Constant Torque Speed Range	30
Current @ Voltage	5.300 A @ 575.0 V
Design Code	B
Drip Cover	No Drip Cover
Duty Rating	CONT
Efficiency @ 100% Load	89.5 %
Electrically Isolated Bearing	Not Electrically Isolated
Feedback Device	NO FEEDBACK
Front Shaft Indicator	None
Haz Area Temp Code	T3C
Heater Indicator	No Heater
High Voltage Full Load Amps	5.3 a
Insulation Class	F

## Part detail

Revision	B
Type	AC
Mech. spec.	36R726
Base	
Status	PRD/A
Elec. spec.	36WGS551
Layout	36LYR726
Eff. date	04-28-2021
CD Diagram	CD0006
Poles	04
Leads	3#16
Proprietary	False
Created date	12-19-2018

<b>Inverter Code</b>	<b>Inverter Duty</b>
<b>IP Rating</b>	NONE
<b>KVA Code</b>	J
<b>Lifting Lugs</b>	No Lifting Lugs
<b>Locked Bearing Indicator</b>	No Locked Bearing
<b>Max Speed</b>	2700 rpm
<b>Motor Lead Quantity/Wire Size</b>	3 @ 16 AWG
<b>Motor Lead Termination</b>	Flying Leads
<b>Motor Standards</b>	NEMA
<b>Motor Type</b>	X3642M
<b>Mounting Arrangement</b>	F1
<b>Number of Poles</b>	4
<b>Overall Length</b>	19.74 IN
<b>Power Factor</b>	78
<b>Product Family</b>	General Purpose
<b>Pulley End Bearing Type</b>	Ball
<b>Pulley Face Code</b>	Standard
<b>Pulley Shaft Indicator</b>	Standard
<b>Rodent Screen</b>	None
<b>RoHS Status</b>	ROHS NON-COMPLIANT
<b>Service Factor</b>	1.00
<b>Shaft Diameter</b>	1.125 IN
<b>Shaft Ground Indicator</b>	No Shaft Grounding
<b>Shaft Rotation</b>	Reversible
<b>Shaft Slinger Indicator</b>	No Slinger
<b>Speed</b>	1750 rpm
<b>Speed Code</b>	Single Speed
<b>Starting Method</b>	Direct on line
<b>Thermal Device - Bearing</b>	None
<b>Thermal Device - Winding</b>	Normally Closed Thermostat
<b>Vibration Sensor Indicator</b>	No Vibration Sensor
<b>Winding Thermal 1</b>	None
<b>Winding Thermal 2</b>	None

**Nameplate**

**NP0887XPSLEV**

<b>NO.</b>		<b>CC</b>	010A				
<b>S/N</b>		<b>TEMP CODE</b>	T3C				
<b>SPEC.</b>	36R726S551G1	<b>INV.TYPE</b>	PWM				
<b>CAT.NO.</b>	XM18542T-5	<b>C HP FR</b>	60	<b>C HP TO</b>	90		
<b>HP</b>	5	<b>CT HZ FROM</b>	30	<b>CT HZ TO</b>	60		
<b>VOLTS</b>	575	<b>VT HZ FROM</b>	6	<b>VT HZ TO</b>	60		
<b>AMPS</b>	5.3	<b>MAG CUR</b>	2.6				
<b>RPM</b>	1750	<b>MX RPM</b>	2700				
<b>HZ</b>	60	<b>PH</b>	3	<b>CL</b>	F	<b>NOM.EFF.</b>	89.5
<b>SER.F.</b>	1.00	<b>DES</b>	B	<b>SL HZ</b>	1.67	<b>WK2</b>	0.39
<b>FRAME</b>	184T	<b>RATING</b>	40C AMB-CONT				
	55C AMB AT 1.00 SF SINEWAVE						
	NEMA MG-1 PART 5, IP54			1.15 SF SINEWAVE			

**AC Induction Motor Performance Data**

Record # 64274

Typical performance - not guaranteed values

Winding: 36WGS551-R022		Type: 3642M	Enclosure: XPFC	
<b>Nameplate Data</b>			<b>575 V, 60 Hz: Single Voltage Motor</b>	
Rated Output (HP)	5	Full Load Torque	14.9 LB-FT	
Volts	575	Start Configuration	direct on line	
Full Load Amps	5.3	Breakdown Torque	52.2 LB-FT	
R.P.M.	1750	Pull-up Torque	31.6 LB-FT	
Hz	60 Phase	3	Locked-rotor Torque	35 LB-FT
NEMA Design Code	B KVA Code	J	Starting Current	39.3 A
Service Factor (S.F.)		1	No-load Current	2.6 A
NEMA Nom. Eff.	89.5 Power Factor	78	Line-line Res. @ 25°C	3.57 Ω
Rating - Duty	40C AMB-CONT		Temp. Rise @ Rated Load	77°C
			Locked-rotor Power Factor	40
			Rotor inertia	0.391 LB-FT <sup>2</sup>

**Load Characteristics 575 V, 60 Hz, 5 HP**

% of Rated Load	25	50	75	100	125	150
Power Factor	38	60	72	78	83	83
Efficiency	84.7	89.6	90.4	89.5	88.4	86.9
Speed	1789	1776	1762	1750	1733	1714
Line amperes	2.85	3.45	4.35	5.33	6.36	7.72

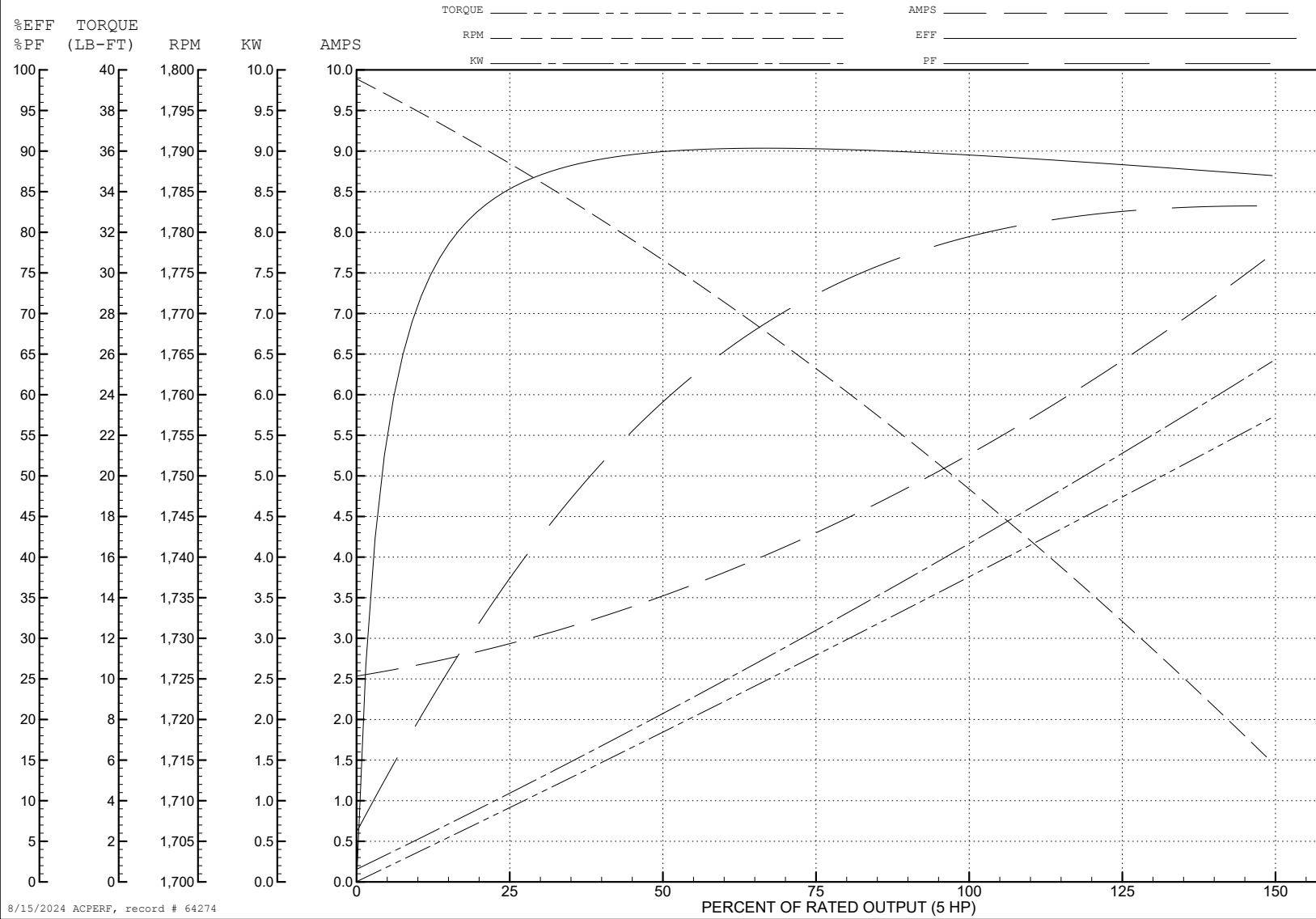
ABB Motors and Mechanical Inc.

WINDING # 36WGS551

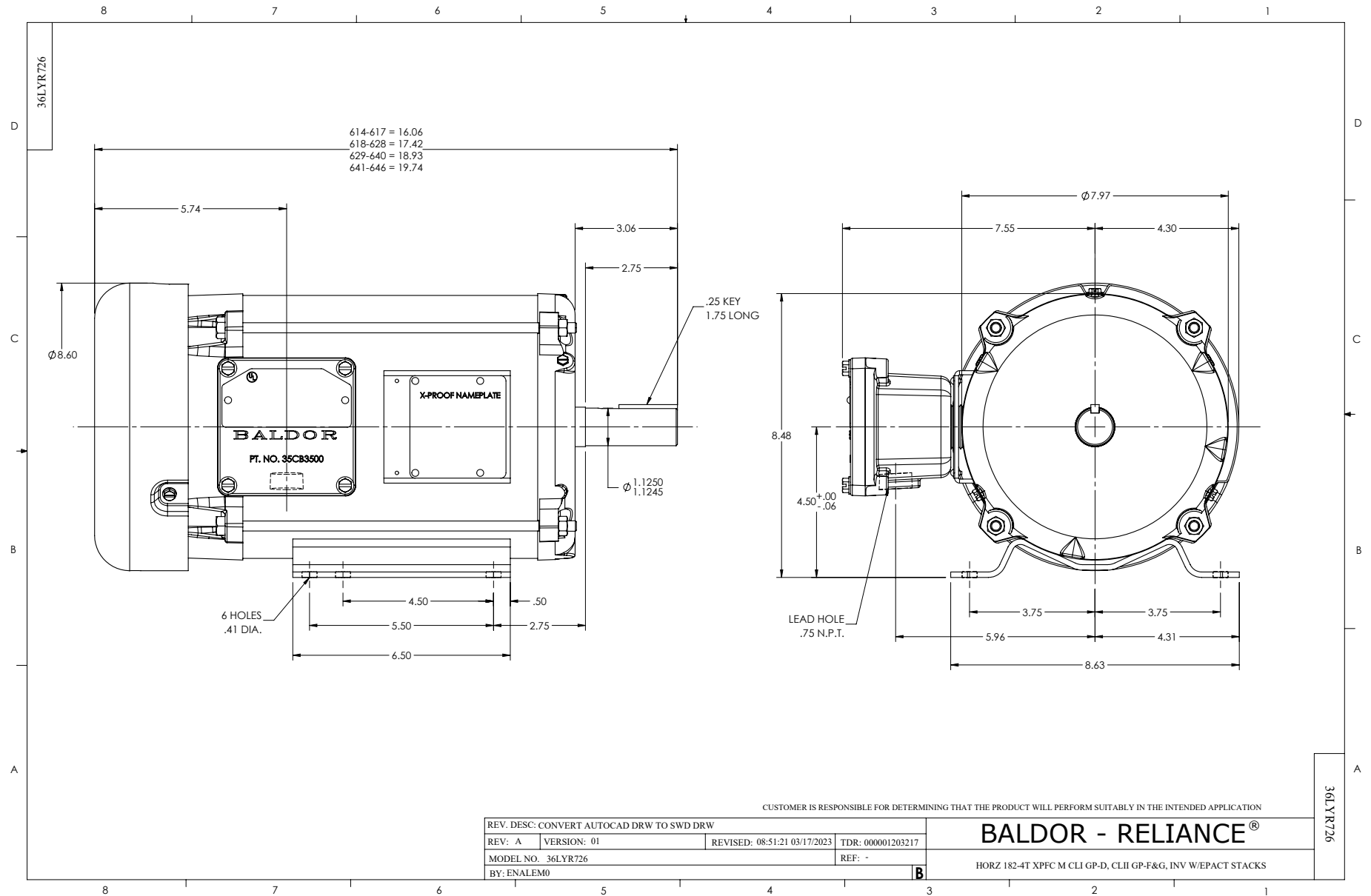
5 HP 3 PH 60 HZ 1750 RPM 575 V 3642M

Typical performance - not guaranteed values.

TORQUES (LB-FT): PO=52.2 PU=31.6 LR=35 LRA=39.3



8/15/2024 ACPERF, record # 64274



CD0006



NOTES:

1. THREE LEAD MOTOR MAY BE EITHER WYE CONNECTED OR DELTA CONNECTED.
2. INTERCHANGE ANY TWO LINE LEADS TO REVERSE ROTATION.
3. OPTIONAL THERMOSTATS ARE PROVIDED WHEN SPECIFIED.
4. ACTUAL NUMBER OF INTERNAL PARALLEL CIRCUITS MAY VARY.
5. LEAD COLORS ARE OPTIONAL. LEADS MUST BE NUMBERED AS SHOWN.

CD0006

REV. DESC: ADD CLASS CONN00000007		
REV. LTR: E	VERSION: 01	TDR: 000001099922
FILE: \AAA\00005\141	REVISED: 10:24:49 02/19/2019	BY: ENBRIRO
MTL: -	© □	

**BALDOR - RELIANCE®**

3PH, SV, 3 LEADS, WYE OR DELTA CONNECTED

SH 1 of 1