

BALDOR • RELIANCE

Customer information packet

XM18522T

34M 2P XPFC HOR 184T T'STATS INVERTER

Class - CLI GP D; CLII GP F,G

Division - Division I

Specifications

Enclosure	XPFC
Frame	184T
Frame Material	Steel
Frequency	50.00 Hz 60.00 Hz
Haz Area Class and Group	CLI GP D; CLII GP F,G
Haz Area Division	Division I
Motor Letter Type	Three Phase
Output @ Frequency	3.000 HP @ 50 HZ 5.000 HP @ 60 HZ
Phase	3
Synchronous Speed @ Frequency	3600 RPM @ 60 HZ
Voltage @ Frequency	460.0 V @ 60 HZ 380.0 V @ 50 HZ 230.0 V @ 60 HZ 190.0 V @ 50 HZ
Agency Approvals	CSA EEV UL
Ambient Temperature	40 °C
Auxillary Box	No Auxillary Box
Auxillary Box Lead Termination	None
Base Indicator	Rigid
Bearing Grease Type	Polyrex EM (-20F +300F)
Blower	None
Constant Torque Speed Range	2.2
Current @ Voltage	8.400 A @ 190.0 V 5.600 A @ 460.0 V 4.200 A @ 380.0 V 11.200 A @ 230.0 V
Design Code	A
Drip Cover	No Drip Cover
Duty Rating	CONT

Part detail

Revision	B
Type	AC
Mech. spec.	36R726
Base	
Status	PRD/A
Elec. spec.	36WGT860
Layout	36LYR726
Eff. date	01-14-2025
CD Diagram	CD0005
Poles	02
Leads	9#16
Proprietary	False
Created date	12-19-2018

Efficiency @ 100% Load	89.5 %
Electrically Isolated Bearing	Not Electrically Isolated
Feedback Device	NO FEEDBACK
Front Shaft Indicator	None
Haz Area Temp Code	T3C
Heater Indicator	No Heater
High Voltage Full Load Amps	4.2 a
Insulation Class	F
Inverter Code	Inverter Duty
IP Rating	NONE
KVA Code	L
Lifting Lugs	No Lifting Lugs
Locked Bearing Indicator	No Locked Bearing
Max Speed	5400 rpm
Motor Lead Quantity/Wire Size	9 @ 16 AWG
Motor Lead Termination	Flying Leads
Motor Standards	NEMA
Motor Type	X3634M
Mounting Arrangement	F1
Number of Poles	2
Overall Length	18.93 IN
Power Factor	94
Product Family	General Purpose
Pulley End Bearing Type	Ball
Pulley Face Code	Standard
Pulley Shaft Indicator	Standard
Rodent Screen	None
RoHS Status	ROHS NON-COMPLIANT
Service Factor	1.00
Shaft Diameter	1.125 IN
Shaft Ground Indicator	No Shaft Grounding
Shaft Rotation	Reversible
Shaft Slinger Indicator	No Slinger
Speed	2870 rpm

	3470 rpm
Speed Code	Single Speed
Starting Method	Direct on line
Thermal Device - Bearing	None
Thermal Device - Winding	Normally Closed Thermostat
Vibration Sensor Indicator	No Vibration Sensor
Winding Thermal 1	None
Winding Thermal 2	None

Nameplate

NP0887XPSLEV									
NO.		CC	010A						
S/N		TEMP CODE	T3C						
SPEC.	36R726T860G1	INV.TYPE	PWM						
CAT.NO.	XM18522T	C HP FR	60	C HP TO	90				
HP	5//3	CT HZ FROM	2.2	CT HZ TO	60				
VOLTS	230/460//190/380	VT HZ FROM	2.2	VT HZ TO	60				
AMPS	11.2/5.6//8.4/4.2	MAG CUR	3.2/1.6						
RPM	3470//2870	MX RPM	5400						
HZ	60//50	PH	3	CL	F	NOM.EFF.	89.5		
SER.F.	1.00	DES	A	SL HZ	2.2	WK2	0.15		
FRAME	184T	RATING	40C AMB-CONT						
	55C AMB AT 1.00 SF SINEWAVE								
	NEMA MG-1 PART 5, IP54			1.15 SF SINEWAVE					

AC Induction Motor Performance Data

Record # 73675

Typical performance - not guaranteed values

Winding: 36WGT860-R067		Type: 3634M	Enclosure: XPFC	
Nameplate Data			460 V, 60 Hz: High Voltage Connection	
Rated Output (HP)	5//3	Full Load Torque	7.66 LB-FT	
Volts	230/460//190/380	Start Configuration	direct on line	
Full Load Amps	11.2/5.6//8.4/4.2	Breakdown Torque	41.6 LB-FT	
R.P.M.	3470//2870	Pull-up Torque	26.2 LB-FT	
Hz	60//50	Locked-rotor Torque	30.5 LB-FT	
NEMA Design Code	A	Starting Current	59.3 A	
Service Factor (S.F.)	1	No-load Current	1.55 A	
NEMA Nom. Eff.	89.5	Line-line Res. @ 25°C	2.2 Ω	
Rating - Duty	40C AMB-CONT	Temp. Rise @ Rated Load	59°C	
		Locked-rotor Power Factor	42.9	
		Rotor inertia	0.152 LB-FT ²	

Load Characteristics 460 V, 60 Hz, 5 HP

% of Rated Load	25	50	75	100	125	150
Power Factor	65	83	90	94	95	95
Efficiency	87.4	90.6	90.8	90.5	88.9	87.1
Speed	3567	3536	3503	3469	3431	3389
Line amperes	2.1	3.14	4.37	5.56	6.98	8.46

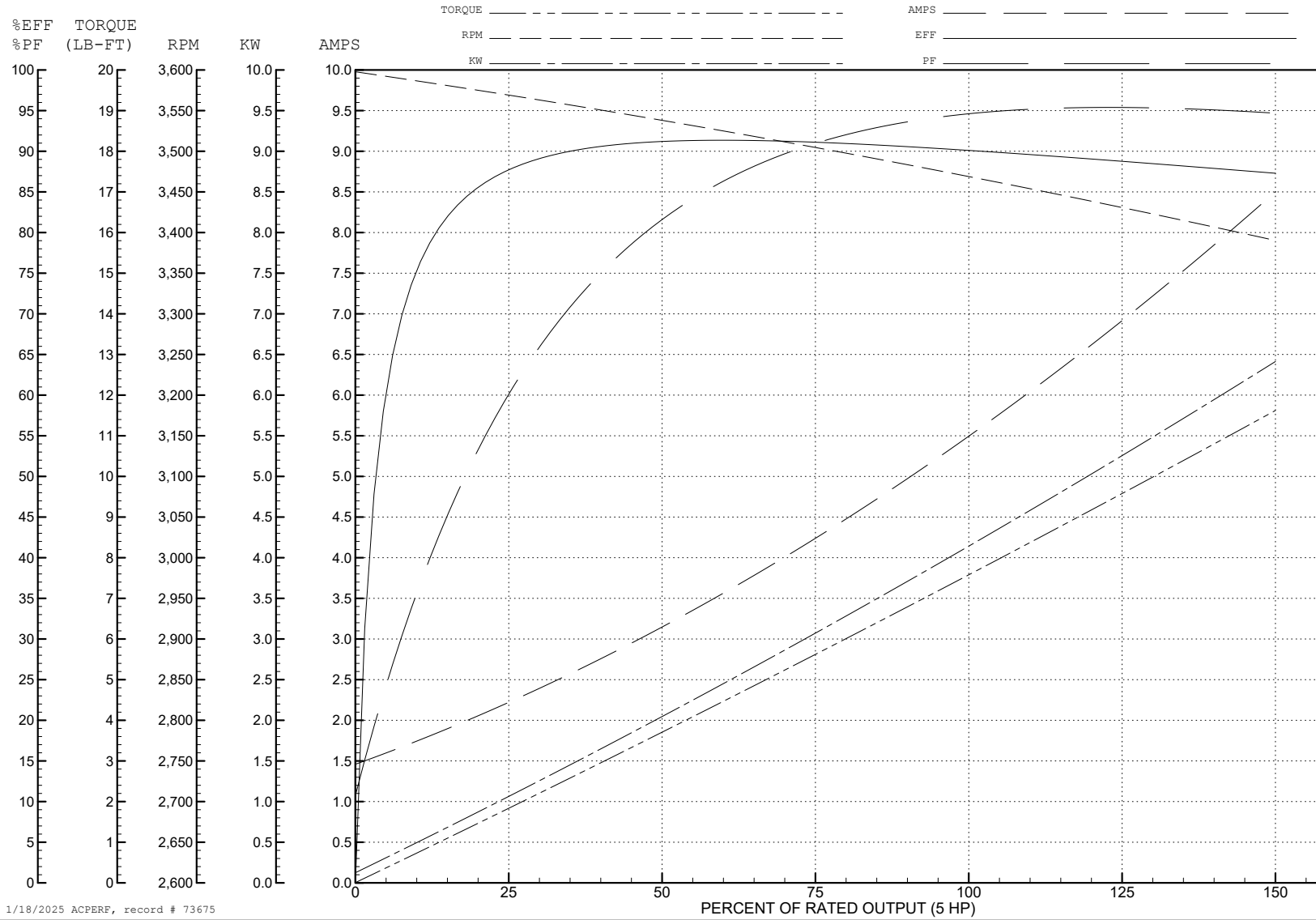
ABB Motors and Mechanical Inc.

WINDING # 36WGT860

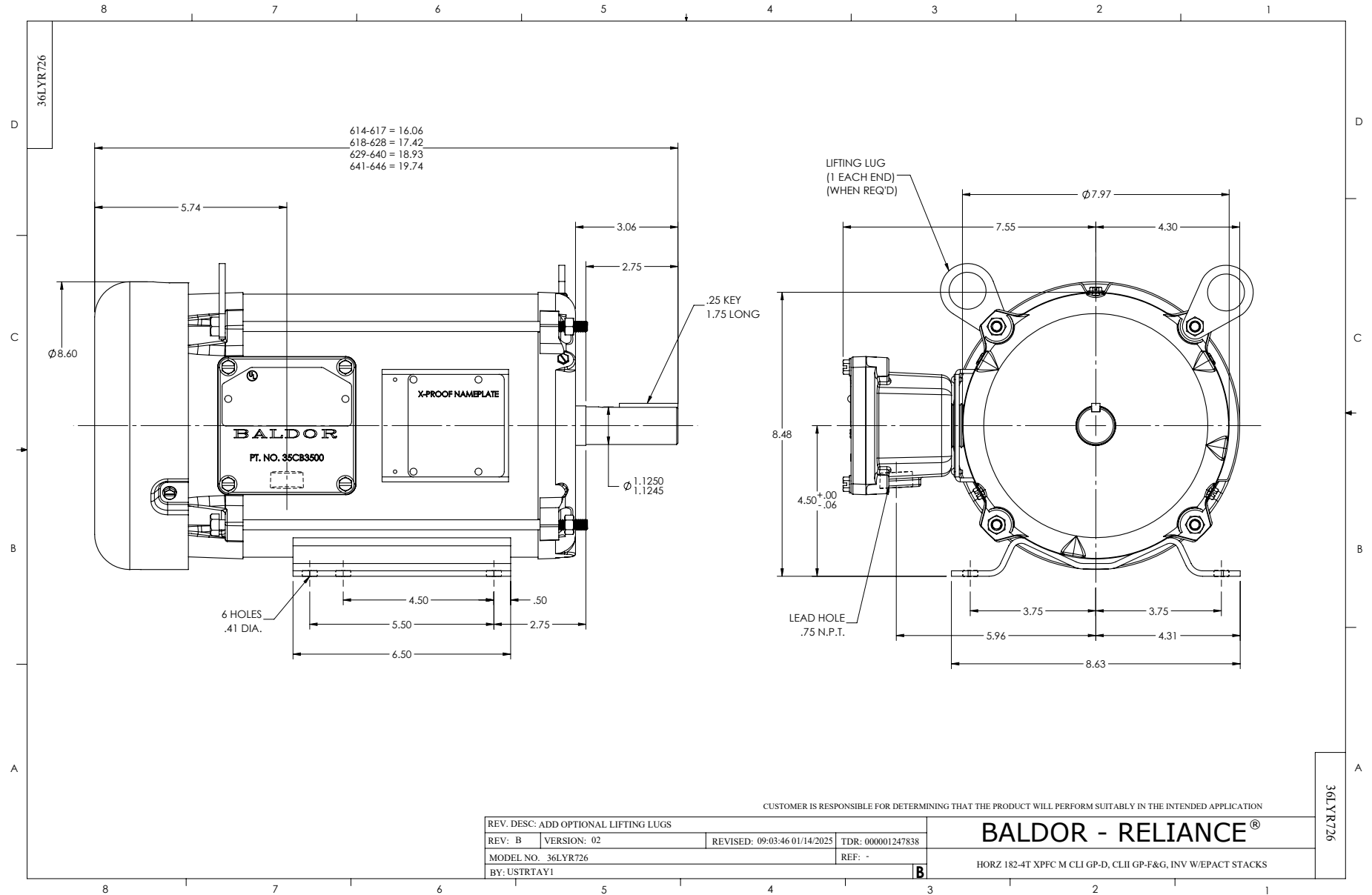
5 HP 3 PH 60 HZ 3469 RPM 460 V 3634M

Typical performance - not guaranteed values.

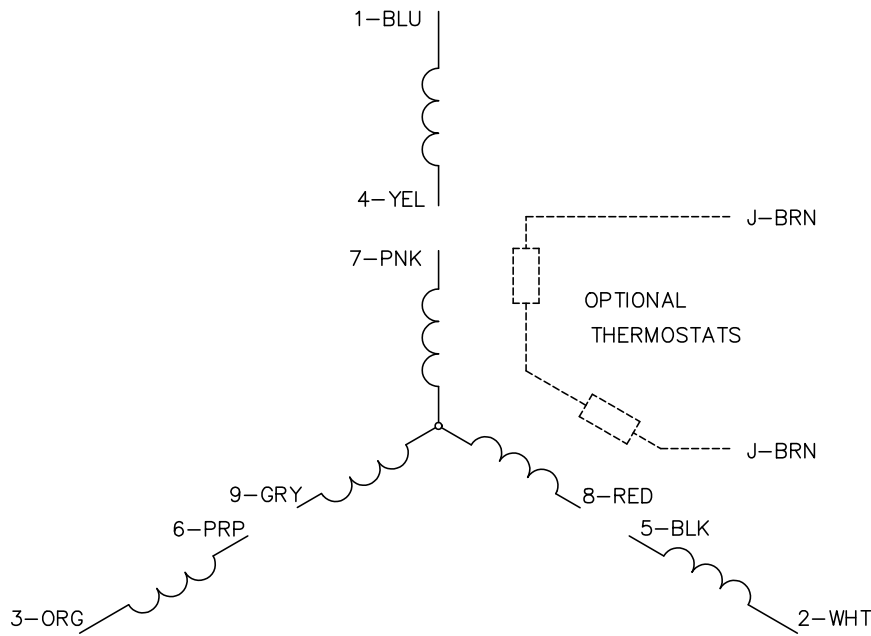
TORQUES (LB-FT): PO=41.6 PU=26.2 LR=30.5 LRA=59.3



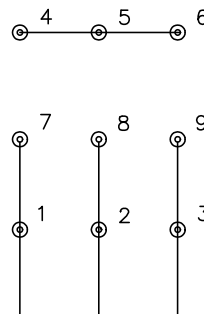
1/18/2025 ACPERF, record # 73675



CD0005

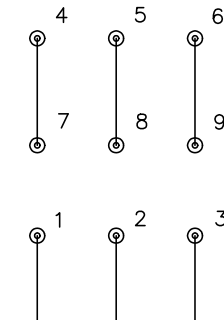


LOW VOLTAGE
(2Y)



LINE

HIGH VOLTAGE
(1Y)



LINE

NOTES:

1. INTERCHANGE ANY TWO LINE LEADS TO REVERSE ROTATION.
2. OPTIONAL THERMOSTATS ARE PROVIDED WHEN SPECIFIED.
3. ACTUAL NUMBER OF INTERNAL PARALLEL CIRCUITS MAY BE A MULTIPLE OF THOSE SHOWN ABOVE.
4. LEAD COLORS ARE OPTIONAL. LEADS MUST ALWAYS BE NUMBERED AS SHOWN.

REV. DESC: REVISE TO SHOW OPTIONAL COLORS			
REV. LTR: E	BY: JLP	REVISED: 01/19/99 10:15	TDR: 0171435
S00000		FILE: AAA00005140	MDL: -
		MTL: -	

BALDOR ELECTRIC Co.

3PH, DV, 9 LEADS

CD0005