

**BALDOR • RELIANCE**

---

# Customer information packet

## XM181562T

32M 6P XPFC HOR 182T T'STATS INVERTER

Class - CLI GP D; CLII GP F,G

Division - Division I

## Specifications

Enclosure	XPFC
Frame	182T
Frame Material	Steel
Frequency	50.00 Hz 60.00 Hz
Haz Area Class and Group	CLI GP D; CLII GP F,G
Haz Area Division	Division I
Motor Letter Type	Three Phase
Output @ Frequency	1.000 HP @ 50 HZ 1.500 HP @ 60 HZ
Phase	3
Synchronous Speed @ Frequency	1200 RPM @ 60 HZ
Voltage @ Frequency	460.0 V @ 60 HZ 380.0 V @ 50 HZ 230.0 V @ 60 HZ 190.0 V @ 50 HZ
Agency Approvals	CSA EEV UL
Ambient Temperature	40 °C
Auxillary Box	No Auxillary Box
Auxillary Box Lead Termination	None
Base Indicator	Rigid
Bearing Grease Type	Polyrex EM (-20F +300F)
Blower	None
Constant Torque Speed Range	1.8
Current @ Voltage	4.800 A @ 230.0 V 4.200 A @ 190.0 V 2.400 A @ 460.0 V 2.100 A @ 380.0 V
Design Code	B
Drip Cover	No Drip Cover
Duty Rating	CONT

## Part detail

Revision	B
Type	AC
Mech. spec.	36R726
Base	
Status	PRD/A
Elec. spec.	36WGS916
Layout	36LYR726
Eff. date	01-14-2025
CD Diagram	CD0005
Poles	06
Leads	9#16
Proprietary	False
Created date	12-19-2018

Efficiency @ 100% Load	87.5 %
Electrically Isolated Bearing	Not Electrically Isolated
Feedback Device	NO FEEDBACK
Front Shaft Indicator	None
Haz Area Temp Code	T3C
Heater Indicator	No Heater
High Voltage Full Load Amps	2.1 a
Insulation Class	F
Inverter Code	Inverter Duty
IP Rating	NONE
KVA Code	K
Lifting Lugs	No Lifting Lugs
Locked Bearing Indicator	No Locked Bearing
Max Speed	1800 rpm
Motor Lead Quantity/Wire Size	9 @ 16 AWG
Motor Lead Termination	Flying Leads
Motor Standards	NEMA
Motor Type	X3632M
Mounting Arrangement	F1
Number of Poles	6
Overall Length	18.93 IN
Power Factor	67
Product Family	General Purpose
Pulley End Bearing Type	Ball
Pulley Face Code	Standard
Pulley Shaft Indicator	Standard
Rodent Screen	None
RoHS Status	ROHS NON-COMPLIANT
Service Factor	1.00
Shaft Diameter	1.125 IN
Shaft Ground Indicator	No Shaft Grounding
Shaft Rotation	Reversible
Shaft Slinger Indicator	No Slinger
Speed	1165 rpm

	970 rpm
<b>Speed Code</b>	Single Speed
<b>Starting Method</b>	Direct on line
<b>Thermal Device - Bearing</b>	None
<b>Thermal Device - Winding</b>	Normally Closed Thermostat
<b>Vibration Sensor Indicator</b>	No Vibration Sensor
<b>Winding Thermal 1</b>	None
<b>Winding Thermal 2</b>	None

**Nameplate**

**NP0887XPSLEV**

<b>NO.</b>		<b>CC</b>	010A		
<b>S/N</b>		<b>TEMP CODE</b>	T3C		
<b>SPEC.</b>	36R726S916G1	<b>INV.TYPE</b>	PWM		
<b>CAT.NO.</b>	XM181562T	<b>C HP FR</b>	60	<b>C HP TO</b>	90
<b>HP</b>	1.5//1	<b>CT HZ FROM</b>	1.8	<b>CT HZ TO</b>	60
<b>VOLTS</b>	230/460//190/380	<b>VT HZ FROM</b>	1.8	<b>VT HZ TO</b>	60
<b>AMPS</b>	4.8/2.4//4.2/2.1	<b>MAG CUR</b>	3/1.5		
<b>RPM</b>	1165//970	<b>MX RPM</b>	1800		
<b>HZ</b>	60//50	<b>PH</b>	3	<b>CL</b>	F
		<b>NOM.EFF.</b>	87.5		
<b>SER.F.</b>	1.00	<b>DES</b>	B	<b>SL HZ</b>	1.8
				<b>WK2</b>	0.301
<b>FRAME</b>	182T	<b>RATING</b>	40C AMB-CONT		
	55C AMB AT 1.00 SF SINEWAVE				
	NEMA MG-1 PART 5, IP54		1.15 SF SINEWAVE		

**AC Induction Motor Performance Data**

Record # 73918

Typical performance - not guaranteed values

Winding: 36WGS916-R035		Type: 3632M	Enclosure: XPFC	
<b>Nameplate Data</b>			<b>460 V, 60 Hz: High Voltage Connection</b>	
Rated Output (HP)	1.5//1	Full Load Torque	6.86 LB-FT	
Volts	230/460//190/380	Start Configuration	direct on line	
Full Load Amps	4.8/2.4//4.2/2.1	Breakdown Torque	23.8 LB-FT	
R.P.M.	1165//970	Pull-up Torque	12.5 LB-FT	
Hz	60//50 Phase	Locked-rotor Torque	15.3 LB-FT	
NEMA Design Code	B KVA Code	Starting Current	15.8 A	
Service Factor (S.F.)	1	No-load Current	1.47 A	
NEMA Nom. Eff.	87.5 Power Factor	Line-line Res. @ 25°C	7.12 Ω	
Rating - Duty	40C AMB-CONT	Temp. Rise @ Rated Load	34°C	
		Locked-rotor Power Factor	30.1	
		Rotor inertia	0.301 LB-FT <sup>2</sup>	

**Load Characteristics 460 V, 60 Hz, 1.5 HP**

% of Rated Load	25	50	75	100	125	150
Power Factor	30	48	60	67	71	74
Efficiency	78.8	85.7	87.6	87.4	86.4	85.4
Speed	1192	1185	1177	1168	1158	1148
Line amperes	1.57	1.77	2.07	2.43	2.88	3.36

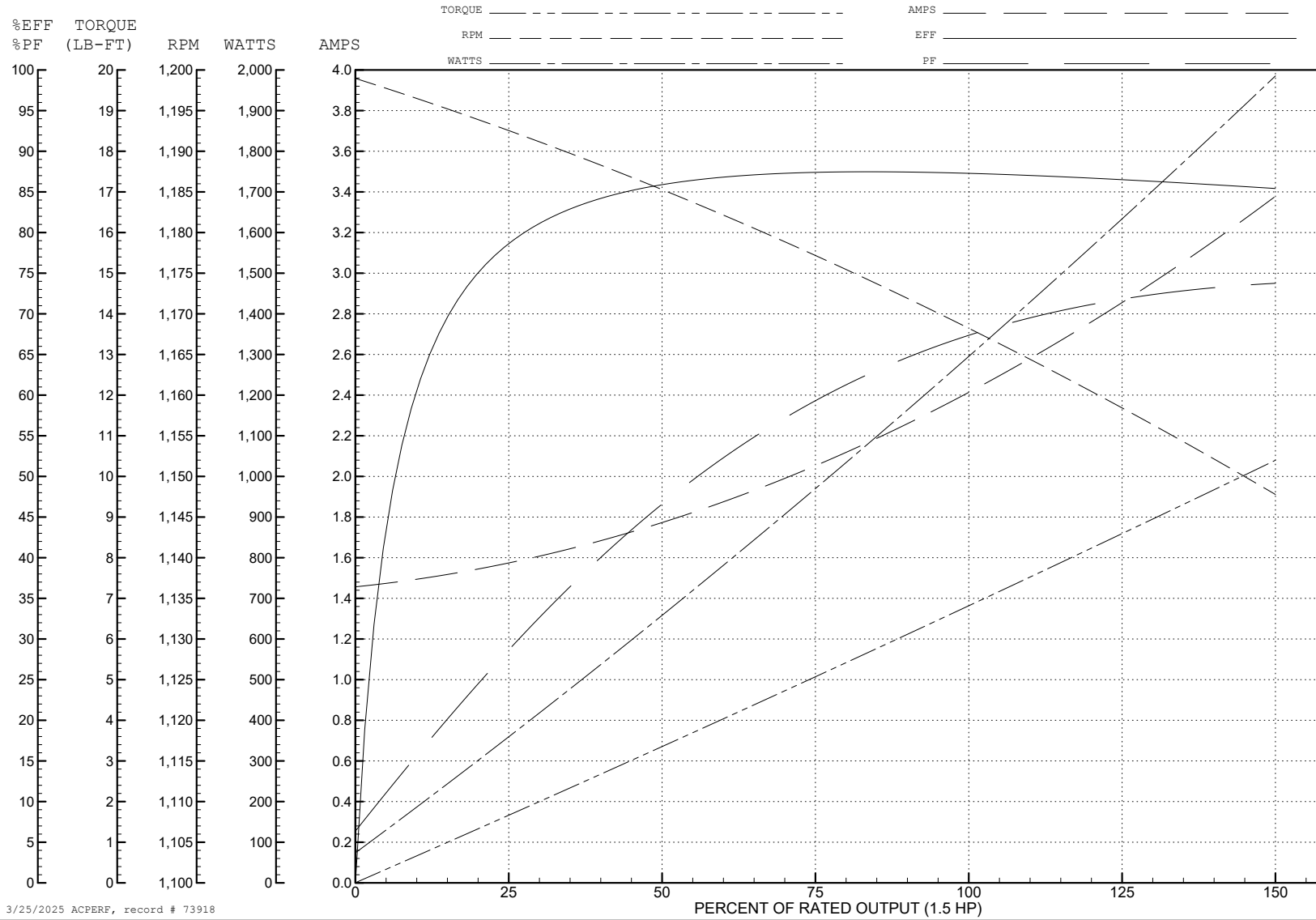
ABB Motors and Mechanical Inc.

WINDING # 36WGS916

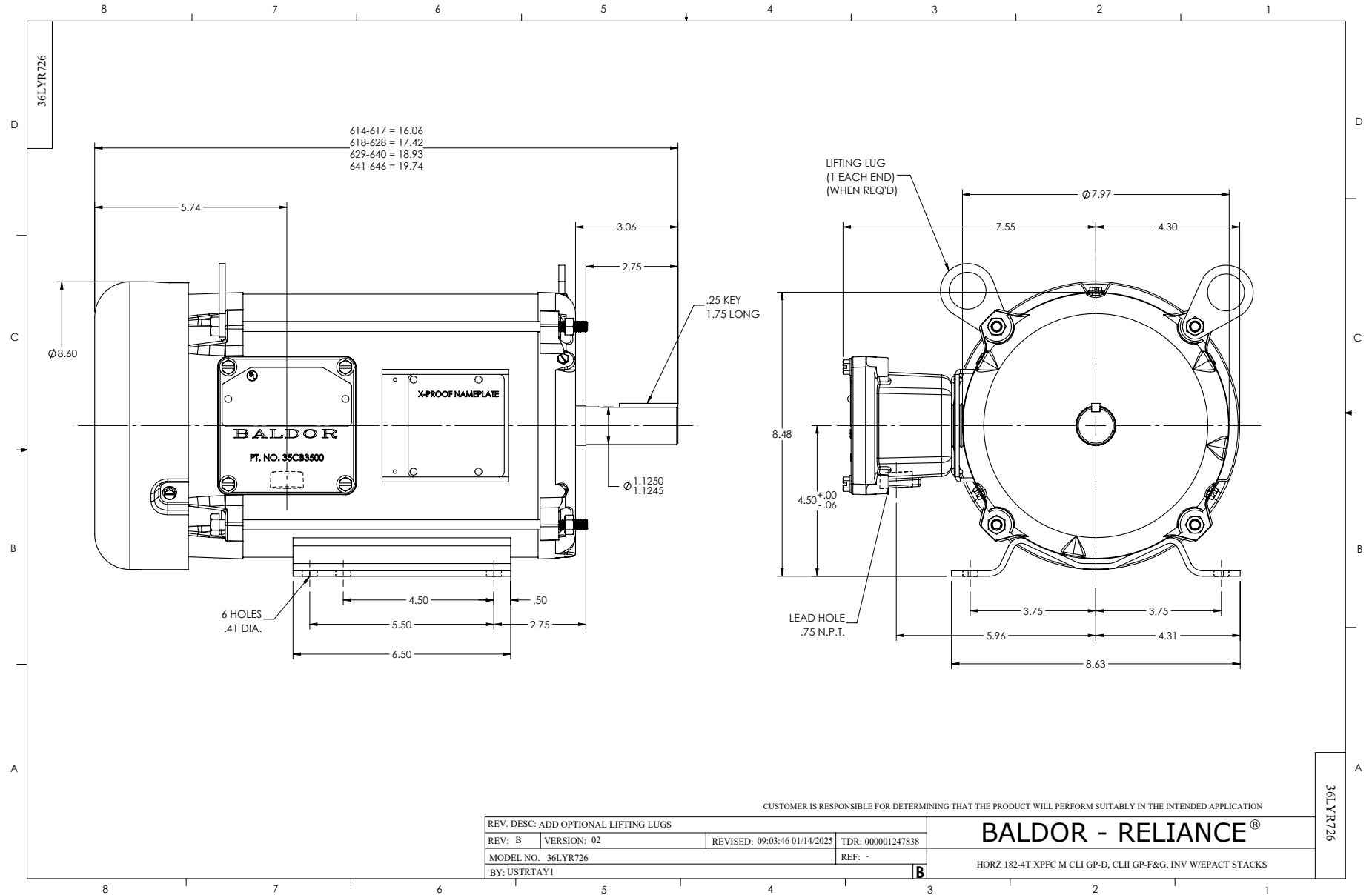
1.5 HP 3 PH 60 HZ 1168 RPM 460 V 3632M

Typical performance - not guaranteed values.

TORQUES (LB-FT): PO=23.8 PU=12.5 LR=15.3 LRA=15.8



3/25/2025 ACPERF, record # 73918





CD0005



LOW VOLTAGE  
(2Y)



LINE

HIGH VOLTAGE  
(1Y)



LINE

NOTES:

1. INTERCHANGE ANY TWO LINE LEADS TO REVERSE ROTATION.
2. OPTIONAL THERMOSTATS ARE PROVIDED WHEN SPECIFIED.
3. ACTUAL NUMBER OF INTERNAL PARALLEL CIRCUITS MAY BE A MULTIPLE OF THOSE SHOWN ABOVE.
4. LEAD COLORS ARE OPTIONAL. LEADS MUST ALWAYS BE NUMBERED AS SHOWN.

CD0005

REV. DESC: REVISE TO SHOW OPTIONAL COLORS			
REV. LTR: E	BY: JLP	REVISED: 01/19/99 10:15	TDR: 0171435
S00000		FILE: AAA00005140	MDL: -
		MTL: -	

**BALDOR ELECTRIC Co.**

3PH, DV, 9 LEADS