

ABB BALDOR RELIANCE III

Customer information packet

XM14142T

1//.75HP, 1760//1475RPM, 3PH, 60//50HZ, 143T

Class - CLI GP D; CLII GP F,G

Division - Division I

Specifications

| | |
|---------------------------------------|---|
| Enclosure | XPFC |
| Frame | 143T |
| Frame Material | Steel |
| Frequency | 50.00 Hz 60.00 Hz |
| Haz Area Class and Group | CLI GP D; CLII GP F,G |
| Haz Area Division | Division I |
| Motor Letter Type | Three Phase |
| Output @ Frequency | .750 HP @ 50 HZ 1.000 HP @ 60 HZ |
| Phase | 3 |
| Synchronous Speed @ Frequency | 1800 RPM @ 60 HZ |
| Voltage @ Frequency | 380.0 V @ 50 HZ 230.0 V @ 60 HZ 190.0 V @ 50 HZ 460.0 V @ 60 HZ |
| Agency Approvals | CSA EEV UL |
| Ambient Temperature | 40 °C |
| Auxiliary Box | NO AUXILLARY BOX |
| Auxiliary Box Lead Termination | None |
| Base Indicator | Rigid |
| Bearing Grease Type | Polyrex EM (-20F +300F) |
| Blower | None |
| Constant Torque Speed Range | 1.3 |
| Current @ Voltage | 3.260 A @ 230.0 V 3.200 A @ 208.0 V 3.080 A @ 190.0 V 1.630 A @ 460.0 V 1.540 A @ 380.0 V |
| Design Code | B |
| Drip Cover | No Drip Cover |

Part Detail

| | |
|---------------------|------------|
| Revision | C |
| Type | AC |
| Mech. spec. | 35Q558 |
| Base | |
| Status | PRD/A |
| Elec. spec. | 35WGG004 |
| Layout | 35LYQ558 |
| Eff. date | 03-03-2025 |
| CD Diagram | CD0005 |
| Poles | 04 |
| Leads | 9#18 Y |
| Proprietary | False |
| Created date | 01-10-2022 |

| | |
|--------------------------------------|---------------------------|
| Duty Rating | CONT |
| Efficiency @ 100% Load | 85.5 % |
| Electrically Isolated Bearing | Not Electrically Isolated |
| Feedback Device | NO FEEDBACK |
| Front Shaft Indicator | None |
| Haz Area Temp Code | T3C |
| Heater Indicator | No Heater |
| High Voltage Full Load Amps | 1.5 a |
| Insulation Class | F |
| Inverter Code | Inverter Duty |
| KVA Code | N |
| Lifting Lugs | No Lifting Lugs |
| Locked Bearing Indicator | No Locked Bearing |
| Max Speed | 2700 rpm |
| Motor Lead Quantity/Wire Size | 9 @ 18 AWG |
| Motor Lead Termination | Flying Leads |
| Motor Standards | NEMA |
| Motor Type | X3520M |
| Mounting Arrangement | F1 |
| Number of Poles | 4 |
| Overall Length | 14.34 IN |
| Power Factor | 67 |
| Product Family | Hazardous Location Motor |
| Pulley End Bearing Type | Ball |
| Pulley Face Code | Standard |
| Pulley Shaft Indicator | Standard |
| Rodent Screen | None |
| Service Factor | 1.00 |
| Shaft Diameter | 0.875 IN |
| Shaft Ground Indicator | No Shaft Grounding |
| Shaft Rotation | Reversible |
| Shaft Slinger Indicator | No Slinger |
| Speed | 1475 rpm 1760 rpm |

| | |
|-----------------------------------|----------------------------|
| Speed Code | Single Speed |
| Starting Method | Direct on line |
| Thermal Device - Bearing | None |
| Thermal Device - Winding | Normally Closed Thermostat |
| Vibration Sensor Indicator | No Vibration Sensor |
| Winding Thermal 1 | None |
| Winding Thermal 2 | None |

Nameplate

NP0887XPSLEV

| | | | | | |
|----------------|-----------------------------|-------------------|------------------|-----------------|-----|
| NO. | | CC | 010A | | |
| S/N | | TEMP CODE | T3C | | |
| SPEC. | 35Q558G004G1 | INV.TYPE | PWM | | |
| CAT.NO. | XM14142T | C HP FR | 60 | C HP TO | 90 |
| HP | 1//.75 | CT HZ FROM | 1.3 | CT HZ TO | 60 |
| VOLTS | 230/460//190/380 | VT HZ FROM | 1.3 | VT HZ TO | 60 |
| AMPS | 3.26/1.63//3.08/1.54 | MAG CUR | 2.16/1.08 | | |
| RPM | 1760//1475 | MX RPM | 2700 | | |
| HZ | 60//50 | PH | 3 | CL | F |
| | | NOM.EFF. | 85.5 | | |
| SER.F. | 1.00 | DES | B | SL HZ | 1.3 |
| | | WK2 | 0.144 | | |
| FRAME | 143T | RATING | 40C AMB-CONT | | |
| | 55C AMB AT 1.00 SF SINEWAVE | | | | |
| | NEMA MG-1 PART 5, IP54 | | 1.15 SF SINEWAVE | | |

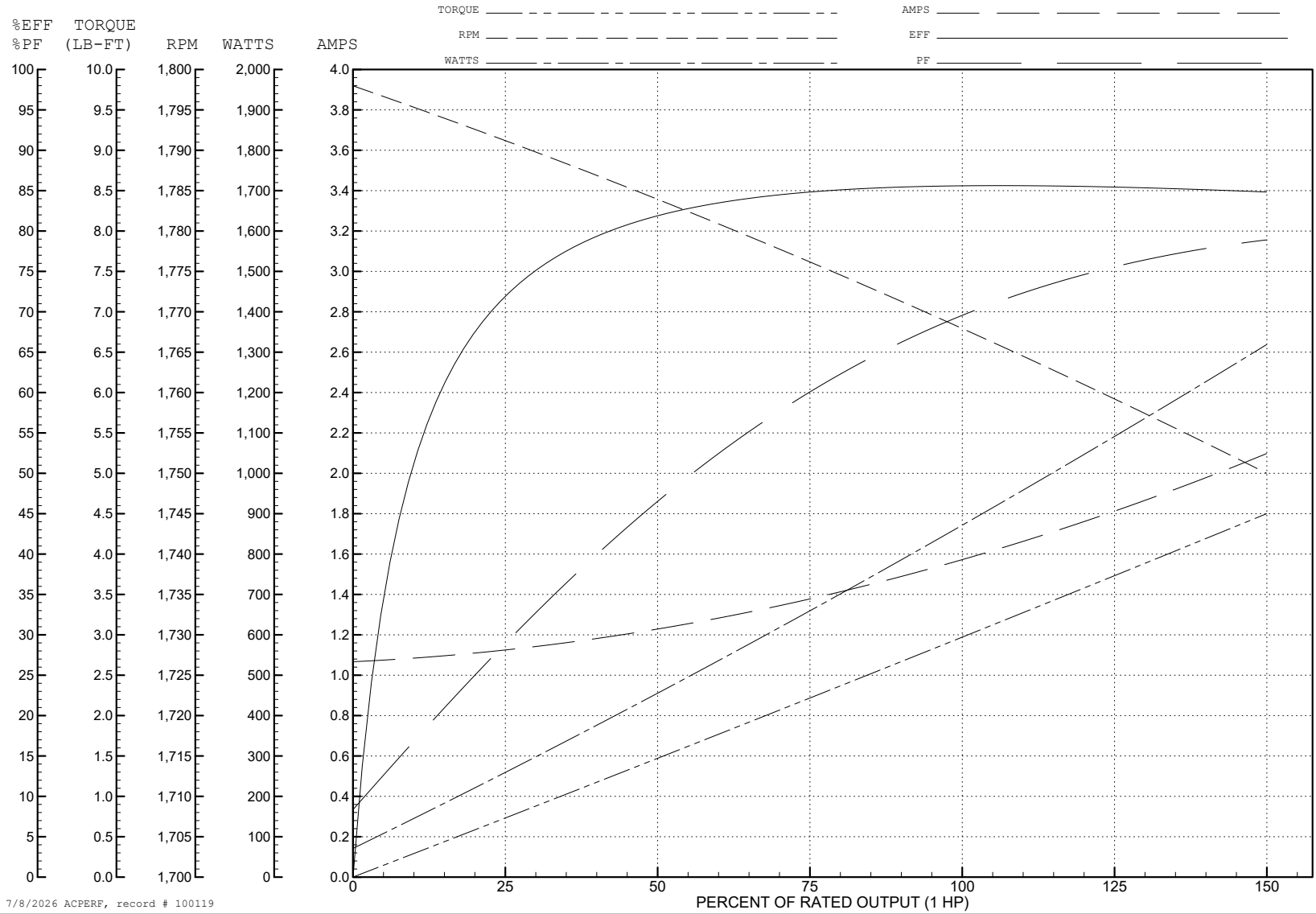
ABB Motors and Mechanical Inc.

WINDING # 35WGG004

Typical performance - not guaranteed values.

1 HP 3 PH 60 HZ 1768 RPM 460 V 3520M

TORQUES (LB-FT): PO=13.68 PU=7.85 LR=9.01 LRA=14.13



7/8/2026 ACPERF, record # 100119

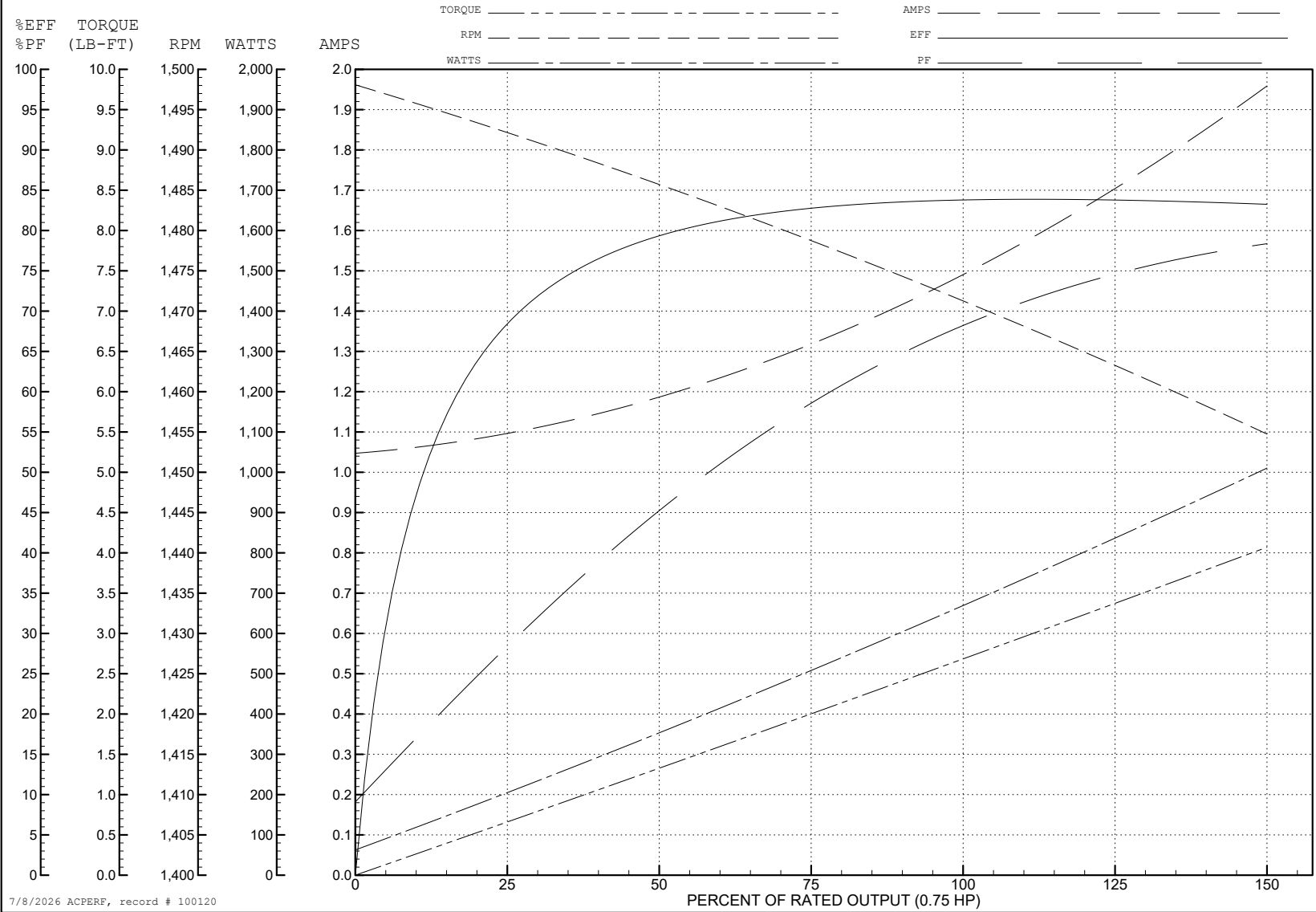
ABB Motors and Mechanical Inc.

WINDING # 35WGG004

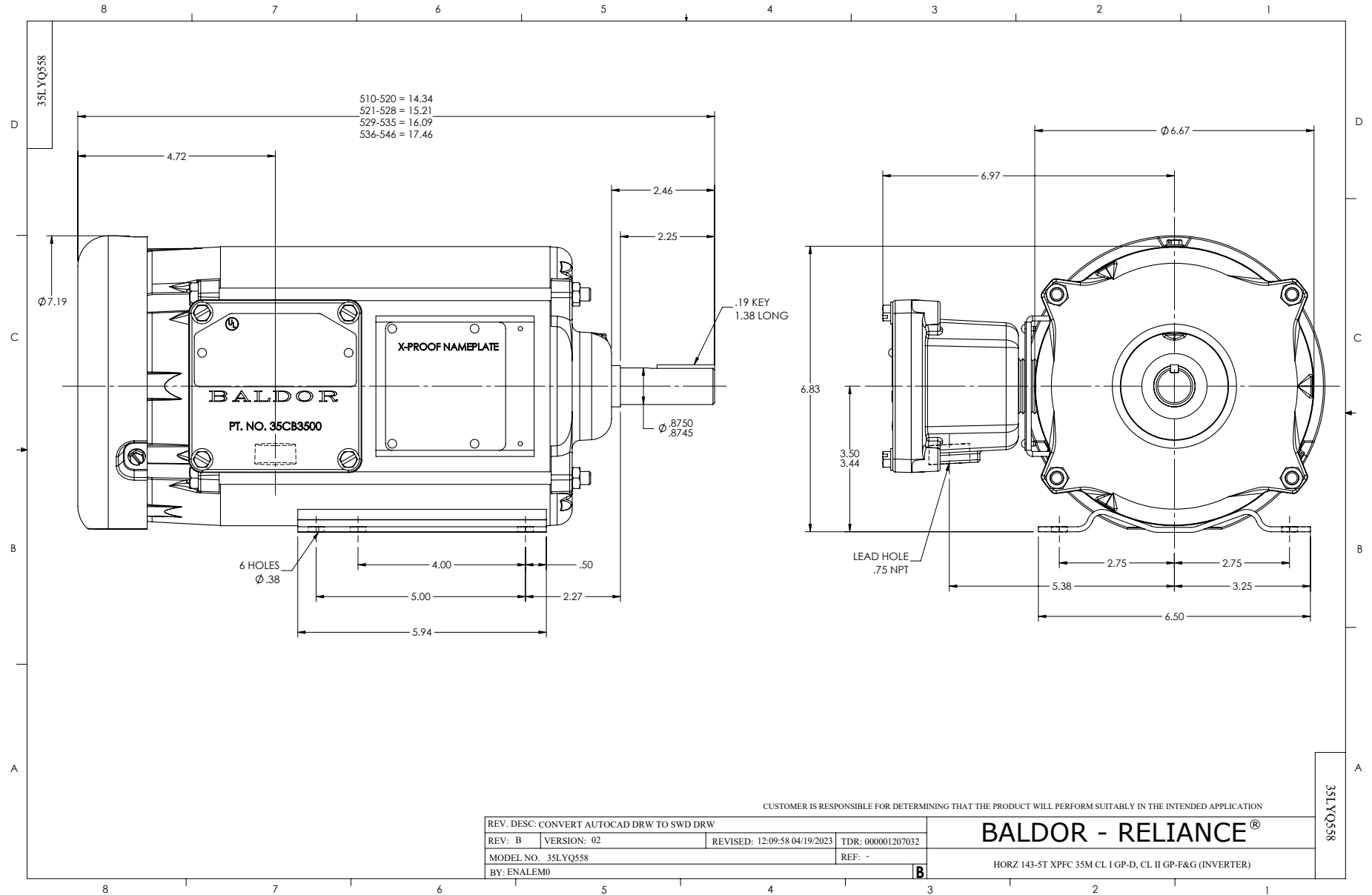
0.75 HP 3 PH 50 HZ 1471 RPM 380 V 3520M

Typical performance - not guaranteed values.

TORQUES (LB-FT): PO=12.31 PU=7.45 LR=8.55 LRA=13.12



7/8/2026 ACPERF, record # 100120



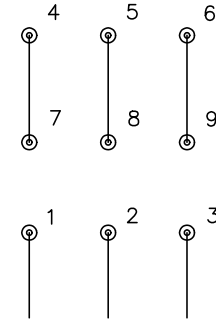
CD0005



LOW VOLTAGE
(2Y)



HIGH VOLTAGE
(1Y)



NOTES:

1. INTERCHANGE ANY TWO LINE LEADS TO REVERSE ROTATION.
2. OPTIONAL THERMOSTATS ARE PROVIDED WHEN SPECIFIED.
3. ACTUAL NUMBER OF INTERNAL PARALLEL CIRCUITS MAY BE A MULTIPLE OF THOSE SHOWN ABOVE.
4. LEAD COLORS ARE OPTIONAL. LEADS MUST ALWAYS BE NUMBERED AS SHOWN.

REV. DESC: REVISE TO SHOW OPTIONAL COLORS

REV. LTR: E

BY: JLP

REVISED: 01/19/99 10:15

TDR: 0171435

500000

FILE: AAA00005140

MDL: -

MTL: -

BALDOR ELECTRIC Co.

3PH, DV, 9 LEADS

CD0005