

BALDOR • RELIANCE

Customer information packet

XM05242

2//1.5HP, 1760//1456RPM, 3PH, 60//50HZ, 56, 3

Class - CLI GP D; CLII GP F,G

Division - Division I

Specifications

| | |
|--------------------------------|---|
| Enclosure | XPFC |
| Frame | 56 |
| Frame Material | Steel |
| Frequency | 50.00 Hz 60.00 Hz |
| Haz Area Class and Group | CLI GP D; CLII GP F,G |
| Haz Area Division | Division I |
| Motor Letter Type | Three Phase |
| Output @ Frequency | 1.500 HP @ 50 HZ 2.000 HP @ 60 HZ |
| Phase | 3 |
| Synchronous Speed @ Frequency | 1800 RPM @ 60 HZ |
| Voltage @ Frequency | 380.0 V @ 50 HZ 230.0 V @ 60 HZ 190.0 V @ 50 HZ 460.0 V @ 60 HZ |
| Agency Approvals | CSA EEV UL |
| Ambient Temperature | 40 °C |
| Auxillary Box | No Auxillary Box |
| Auxillary Box Lead Termination | None |
| Base Indicator | Rigid |
| Bearing Grease Type | Polyrex EM (-20F +300F) |
| Blower | None |
| Constant Torque Speed Range | 3 |
| Current @ Voltage | 5.800 A @ 208.0 V 5.600 A @ 230.0 V 5.200 A @ 190.0 V 2.800 A @ 460.0 V 2.600 A @ 380.0 V |
| Design Code | B |
| Drip Cover | No Drip Cover |

Part detail

| | |
|--------------|------------|
| Revision | D |
| Type | AC |
| Mech. spec. | 35E356 |
| Base | |
| Status | PRD/A |
| Elec. spec. | 35WGG073 |
| Layout | 35LYE356 |
| Eff. date | 07-10-2024 |
| CD Diagram | CD0005 |
| Poles | 04 |
| Leads | 9#18 |
| Proprietary | False |
| Created date | 01-10-2022 |

| | |
|-------------------------------|---------------------------|
| Duty Rating | CONT |
| Efficiency @ 100% Load | 86.5 % |
| Electrically Isolated Bearing | Not Electrically Isolated |
| Feedback Device | NO FEEDBACK |
| Front Shaft Indicator | None |
| Haz Area Temp Code | T3C |
| Heater Indicator | No Heater |
| High Voltage Full Load Amps | 2.6 a |
| Insulation Class | F |
| Inverter Code | Inverter Ready |
| KVA Code | K |
| Lifting Lugs | No Lifting Lugs |
| Locked Bearing Indicator | No Locked Bearing |
| Max Speed | 2700 rpm |
| Motor Lead Quantity/Wire Size | 9 @ 18 AWG |
| Motor Lead Termination | Flying Leads |
| Motor Standards | NEMA |
| Motor Type | X3528M |
| Mounting Arrangement | F1 |
| Number of Poles | 4 |
| Overall Length | 15.15 IN |
| Power Factor | 77 |
| Product Family | General Purpose |
| Pulley End Bearing Type | Ball |
| Pulley Face Code | Standard |
| Pulley Shaft Indicator | Standard |
| Rodent Screen | None |
| Service Factor | 1.00 |
| Shaft Diameter | 0.625 IN |
| Shaft Ground Indicator | No Shaft Grounding |
| Shaft Rotation | Reversible |
| Shaft Slinger Indicator | No Slinger |
| Speed | 1465 rpm 1760 rpm |

| | |
|-----------------------------------|----------------------------|
| Speed Code | Single Speed |
| Starting Method | Direct on line |
| Thermal Device - Bearing | None |
| Thermal Device - Winding | Normally Closed Thermostat |
| Vibration Sensor Indicator | No Vibration Sensor |
| Winding Thermal 1 | None |
| Winding Thermal 2 | None |

Nameplate

NP0887XPSLEV

| | | | | | |
|----------------|------------------|-------------------|--------------|-----------------|-------|
| NO. | | CC | 010A | | |
| S/N | | TEMP CODE | T3C | | |
| SPEC. | 35E356G073G1 | INV.TYPE | | | |
| CAT.NO. | XM05242 | C HP FR | 60 | C HP TO | 90 |
| HP | 2//1.5 | CT HZ FROM | 3 | CT HZ TO | 60 |
| VOLTS | 230/460//190/380 | VT HZ FROM | 6 | VT HZ TO | 60 |
| AMPS | 5.6/2.8//5.2/2.6 | MAG CUR | 3.2/1.6 | | |
| RPM | 1760//1465 | MX RPM | 2700 | | |
| HZ | 60//50 | PH | 3 | CL | F |
| | | NOM.EFF. | 86.5 | | |
| SER.F. | 1.00 | DES | B | SL HZ | 1.3 |
| | | | | WK2 | 0.202 |
| FRAME | 56 | RATING | 40C AMB-CONT | | |
| | | | | | |
| | | | | | |
| | | | | | |

AC Induction Motor Performance Data

Record # 87414

Typical performance - not guaranteed values

| Winding: 35WGG073-R008 | | Type: 3528M | | Enclosure: XPFC | |
|-------------------------------|-------------------|---------------------|--|----------------------------------|--------------------------|
| Nameplate Data | | | 460 V, 60 Hz: High Voltage Connection | | |
| Rated Output (HP) | 2//1.5 | | Full Load Torque | 5.99 LB-FT | |
| Volts | 230/460//190/380 | | Start Configuration | direct on line | |
| Full Load Amps | 5.6/2.8//5/2.5 | | Breakdown Torque | 20.5 LB-FT | |
| R.P.M. | 1760//1456 | | Pull-up Torque | 13.8 LB-FT | |
| Hz | 60//50 | Phase | 3 | Locked-rotor Torque | 15 LB-FT |
| NEMA Design Code | B KVA Code | | L | Starting Current | 22.5 A |
| Service Factor (S.F.) | | | 1 | No-load Current | 1.62 A |
| NEMA Nom. Eff. | 86.5 | Power Factor | 74 | Line-line Res. @ 25°C | 9.54 Ω |
| Rating - Duty | 40C AMB-CONT | | | Temp. Rise @ Rated Load | 64°C |
| | | | | Locked-rotor Power Factor | 57.9 |
| | | | | Rotor inertia | 0.202 lb-ft ² |

Load Characteristics 460 V, 60 Hz, 2 HP

| % of Rated Load | 25 | 50 | 75 | 100 | 125 | 150 |
|------------------------|-----------|-----------|-----------|------------|------------|------------|
| Power Factor | 35 | 55 | 68 | 76 | 81 | 84 |
| Efficiency | 78.2 | 85.3 | 86.8 | 86.5 | 85.4 | 83.6 |
| Speed | 1791 | 1782 | 1771 | 1760 | 1748 | 1734 |
| Line amperes | 1.71 | 1.97 | 2.34 | 2.82 | 3.36 | 3.97 |

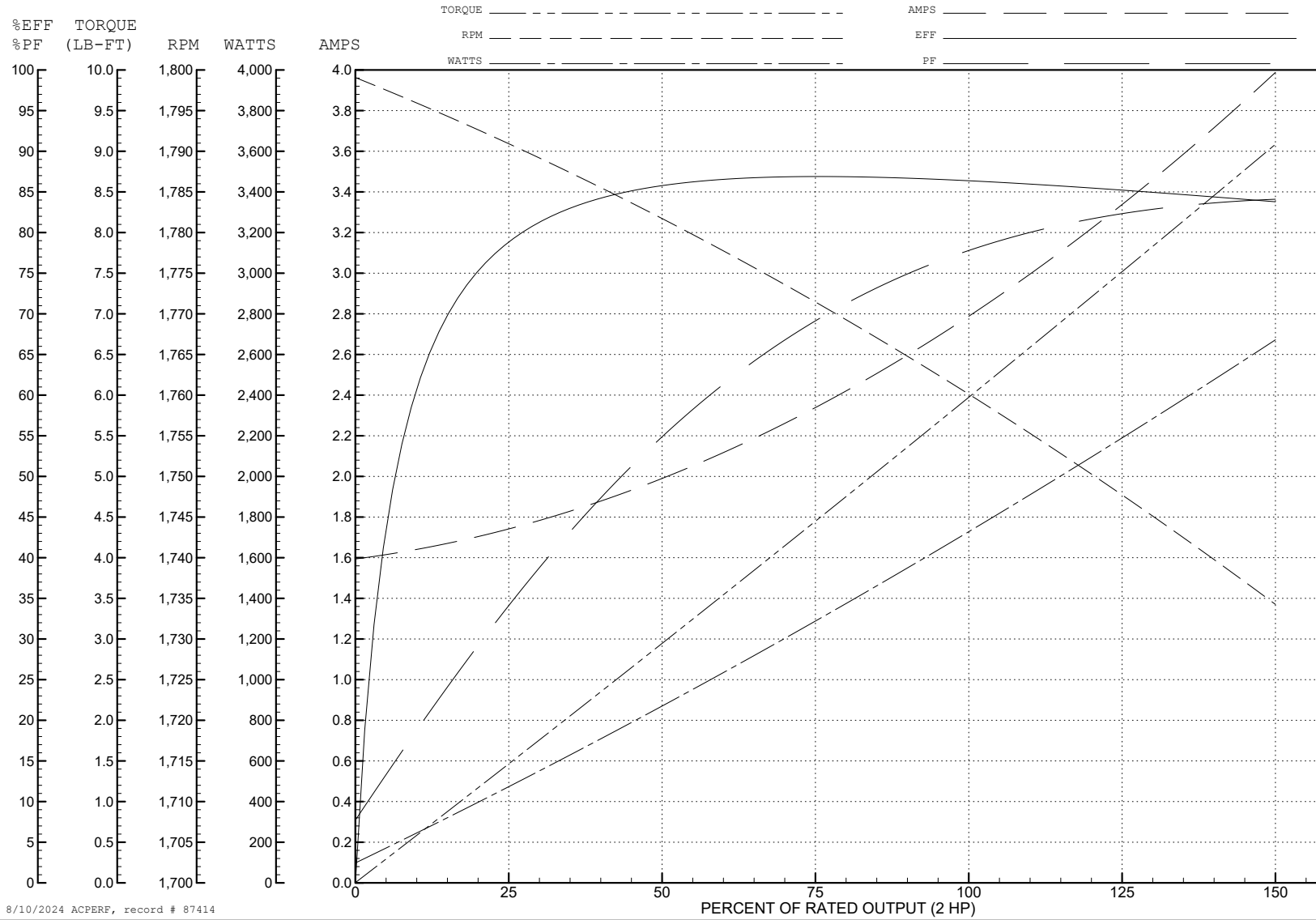
ABB Motors and Mechanical Inc.

WINDING # 35WGG073

Typical performance - not guaranteed values.

2 HP 3 PH 60 HZ 1760 RPM 460 V 3528M

TORQUES (LB-FT): PO=20.5 PU=13.8 LR=15 LRA=22.5



8/10/2024 ACPERF, record # 87414

AC Induction Motor Performance Data

Record # 87415

Typical performance - not guaranteed values

| Winding: 35WGG073-R008 | | Type: 3528M | Enclosure: XPFC | | | |
|------------------------|------------------|--------------|--|---------------------|---------------------------|--------------------------|
| Nameplate Data | | | 380 V, 50 Hz: High Voltage Connection | | | |
| Rated Output (HP) | 2//1.5 | | Full Load Torque | 5.4 LB-FT | | |
| Volts | 230/460//190/380 | | Start Configuration | direct on line | | |
| Full Load Amps | 5.6/2.8//5/2.5 | | Breakdown Torque | 18.6 LB-FT | | |
| R.P.M. | 1760//1456 | | Pull-up Torque | 13.3 LB-FT | | |
| Hz | 60//50 | Phase | 3 | Locked-rotor Torque | 14.4 LB-FT | |
| NEMA Design Code | B | | KVA Code | L | Starting Current | 21 A |
| Service Factor (S.F.) | 1 | | | | No-load Current | 1.58 A |
| NEMA Nom. Eff. | 86.5 | Power Factor | 74 | | Line-line Res. @ 25°C | 9.54 Ω |
| Rating - Duty | 40C AMB-CONT | | | | Temp. Rise @ Rated Load | 58°C |
| | | | | | Locked-rotor Power Factor | 63.3 |
| | | | | | Rotor inertia | 0.202 lb-ft ² |

Load Characteristics 380 V, 50 Hz, 1.5 HP

| % of Rated Load | 25 | 50 | 75 | 100 | 125 | 150 |
|-----------------|------|------|------|------|------|------|
| Power Factor | 33 | 53 | 67 | 75 | 81 | 84 |
| Efficiency | 75.7 | 83.6 | 85.4 | 85.3 | 84.1 | 82.2 |
| Speed | 1492 | 1484 | 1474 | 1464 | 1453 | 1440 |
| Line amperes | 1.66 | 1.88 | 2.2 | 2.63 | 3.12 | 3.68 |

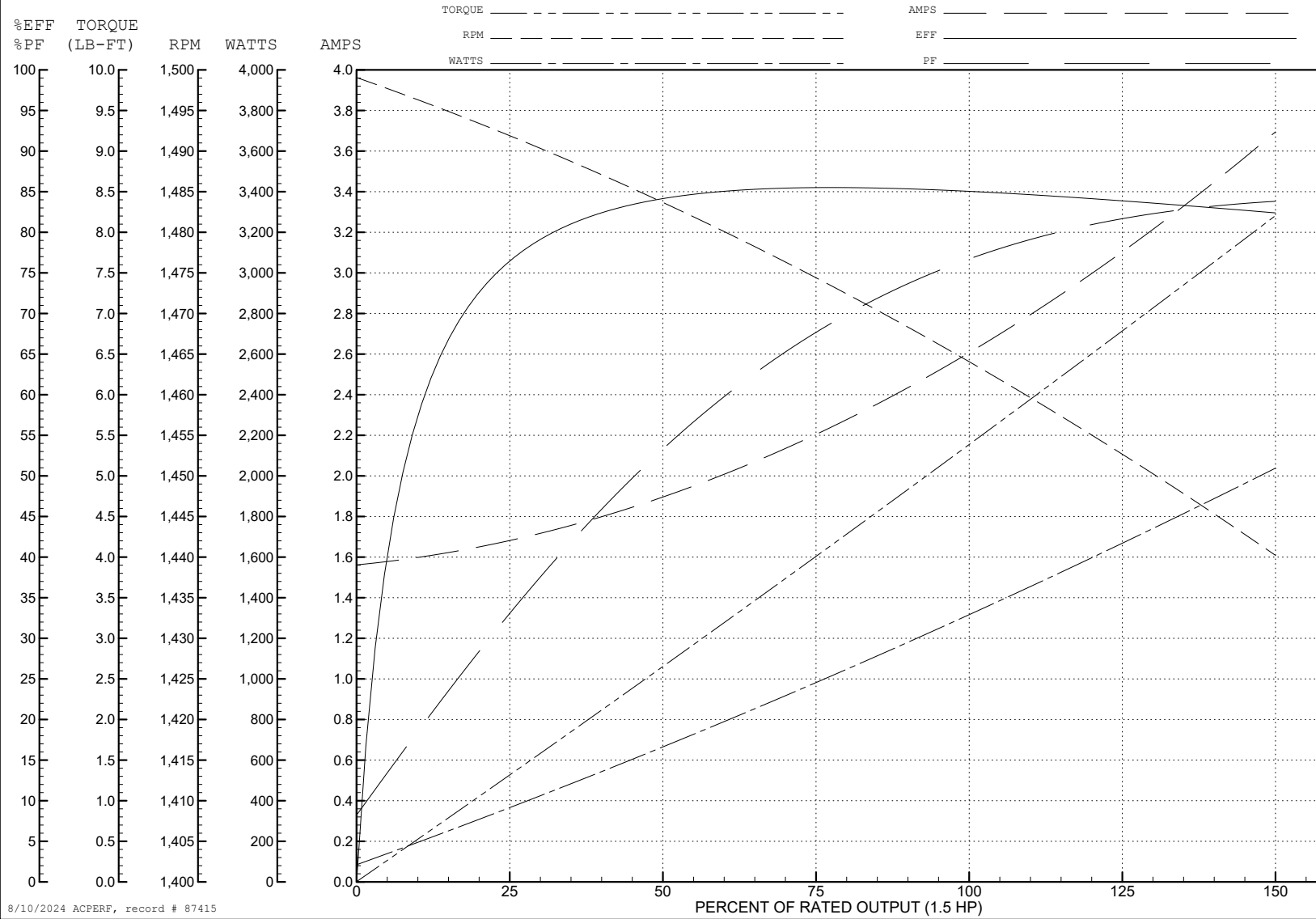
ABB Motors and Mechanical Inc.

WINDING # 35WGG073

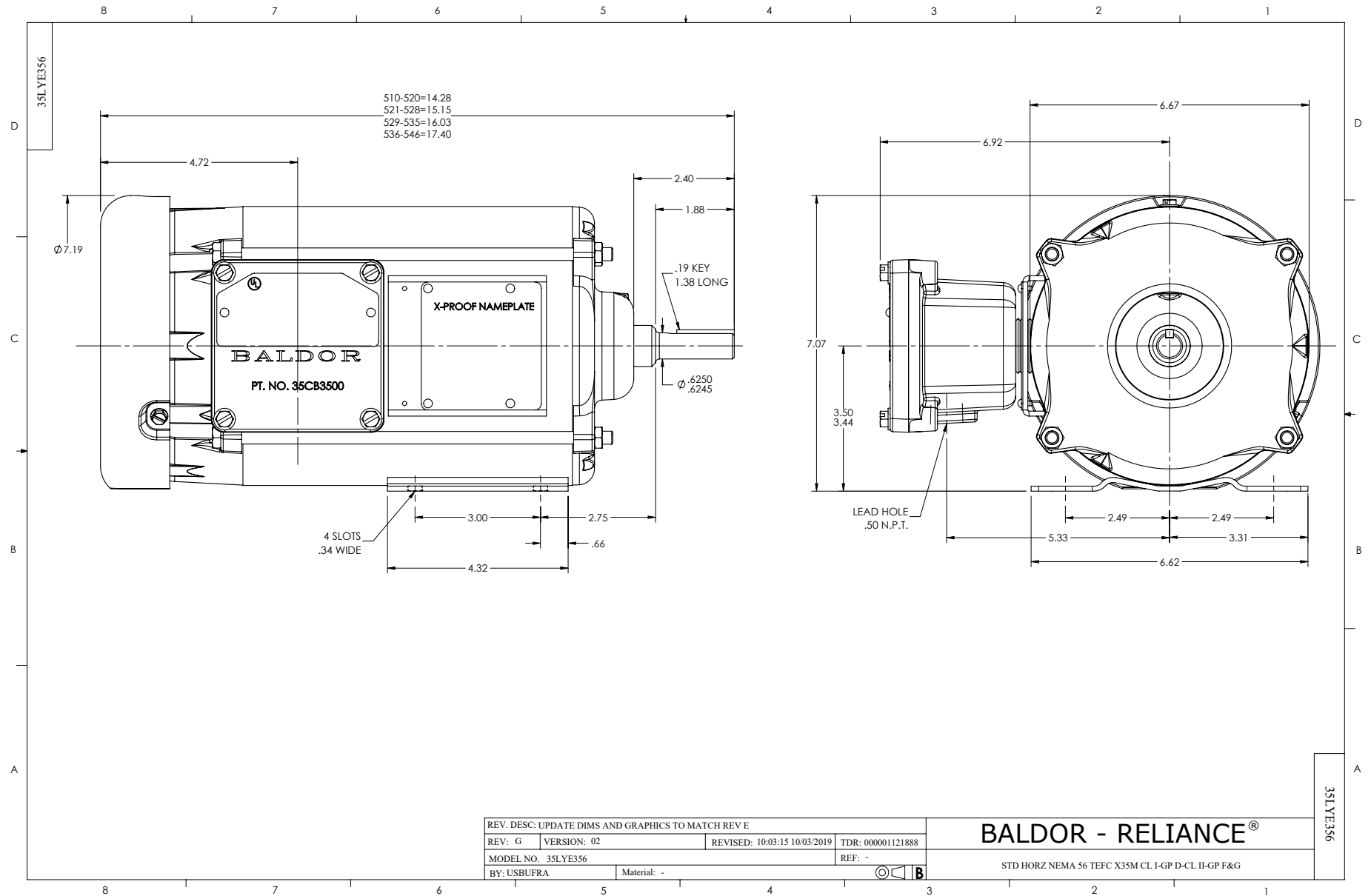
Typical performance - not guaranteed values.

1.5 HP 3 PH 50 HZ 1464 RPM 380 V 3528M

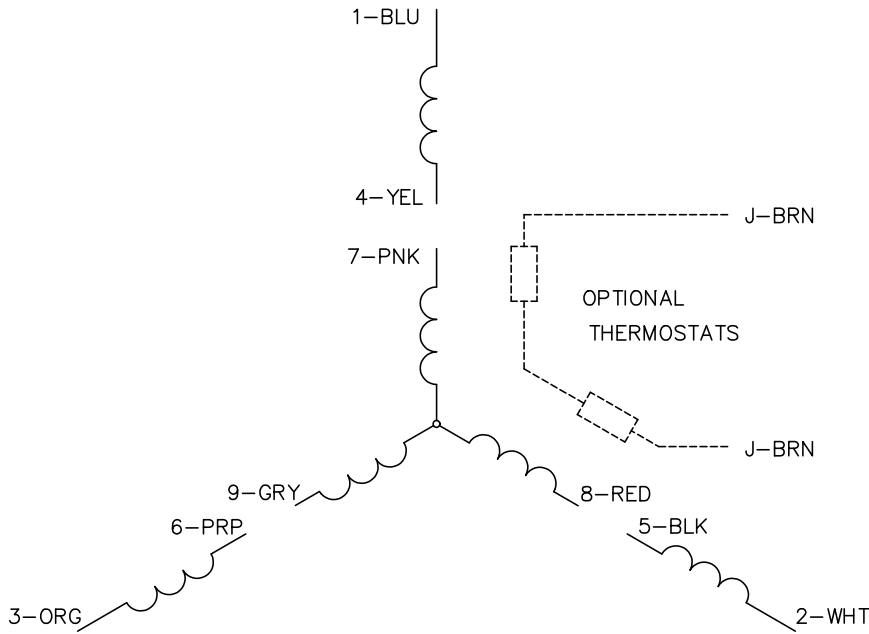
TORQUES (LB-FT): PO=18.6 PU=13.3 LR=14.4 LRA=21



8/10/2024 ACPERF, record # 87415



CD0005

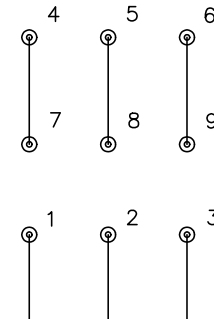


LOW VOLTAGE
(2Y)



LINE

HIGH VOLTAGE
(1Y)



LINE

NOTES:

1. INTERCHANGE ANY TWO LINE LEADS TO REVERSE ROTATION.
2. OPTIONAL THERMOSTATS ARE PROVIDED WHEN SPECIFIED.
3. ACTUAL NUMBER OF INTERNAL PARALLEL CIRCUITS MAY BE A MULTIPLE OF THOSE SHOWN ABOVE.
4. LEAD COLORS ARE OPTIONAL. LEADS MUST ALWAYS BE NUMBERED AS SHOWN.

CD0005

| | | | |
|---|---------|-------------------------|--------------|
| REV. DESC: REVISE TO SHOW OPTIONAL COLORS | | | |
| REV. LTR: E | BY: JLP | REVISED: 01/19/99 10:15 | TDR: 0171435 |
| S00000 | | FILE: AAA00005140 | MDL: - |
| | | MTL: - | |

BALDOR ELECTRIC Co.

3PH, DV, 9 LEADS