

**BALDOR® • RELIANCE™**

---

# Customer information packet

## XM040242A

0.25HP, 1725RPM, 3PH, 60HZ, 48, XPFC, F1

Class - CLI GP D; CLII GP F,G

Division - Division I

## Specifications

Enclosure	XPFC
Frame	48
Frame Material	Steel
Frequency	60.00 Hz
Haz Area Class and Group	CLI GP D; CLII GP F,G
Haz Area Division	Division I
Motor Letter Type	Three Phase
Output @ Frequency	.250 HP @ 60 HZ
Phase	3
Synchronous Speed @ Frequency	1800 RPM @ 60 HZ
Voltage @ Frequency	460.0 V @ 60 HZ 208.0 V @ 60 HZ 230.0 V @ 60 HZ
Agency Approvals	CSA UL
Ambient Temperature	40 °C
Auxiliary Box	NO AUXILLARY BOX
Auxiliary Box Lead Termination	None
Base Indicator	Rigid
Bearing Grease Type	Polyrex EM (-20F +300F)
Blower	None
Current @ Voltage	.650 A @ 460.0 V 1.300 A @ 230.0 V 1.400 A @ 208.0 V
Design Code	B
Drip Cover	No Drip Cover
Duty Rating	CONT
Efficiency @ 100% Load	63.0 %
Electrically Isolated Bearing	Not Electrically Isolated
Feedback Device	NO FEEDBACK
Haz Area Temp Code	T3C
Heater Indicator	No Heater

## Part detail

Revision	F
Type	AC
Mech. spec.	
Base	
Status	PRD/A
Elec. spec.	34WG5724
Layout	34LY5427
Eff. date	05-01-2024
CD Diagram	CD0007
Poles	04
Leads	12#18
Proprietary	False
Created date	08-03-2020

High Voltage Full Load Amps	0.7 a
Insulation Class	B
Inverter Code	Not Inverter
IP Rating	NONE
KVA Code	L
Lifting Lugs	No Lifting Lugs
Locked Bearing Indicator	No Locked Bearing
Motor Lead Termination	Flying Leads
Motor Standards	NEMA
Motor Type	3410M
Mounting Arrangement	F1
Number of Poles	4
Overall Length	12.85 IN
Power Factor	56
Product Family	General Purpose
Pulley Face Code	Standard
Rodent Screen	None
Service Factor	1.00
Shaft Diameter	0.500 IN
Shaft Ground Indicator	No Shaft Grounding
Shaft Rotation	Reversible
Speed	1725 rpm
Speed Code	Single Speed
Starting Method	Direct on line
Thermal Device - Bearing	None
Thermal Device - Winding	None
Vibration Sensor Indicator	No Vibration Sensor
Winding Thermal 1	Automatic Thermal Overload
Winding Thermal 1 Location	EP
Winding Thermal 2	None

**Nameplate**

NP0016XPSL					
<b>NO.</b>		<b>CC</b>			
<b>SER. #</b>					
<b>SPEC</b>	34-0000-0379				
<b>CAT.NO.</b>	XM040242A				
<b>H.P.</b>	.25	<b>T. CODE</b>	T3C		
<b>VOLTS</b>	208-230/460				
<b>AMPS</b>	1.4-1.3/.65				
<b>R.P.M.</b>	1725 34WG5724				
<b>HZ</b>	60	<b>PH</b>	3	<b>CLASS</b>	B
<b>SER.F.</b>	1.00	<b>DES</b>	B	<b>CODE</b>	L
<b>RATING</b>	40C AMB-CONT				
<b>FRAME</b>	48	<b>NEMA NOM. EFF</b>	63		
	<b>PF</b>	56			
<b>BLANK</b>	NEMA MG-1 PART 5, IP54				

**AC Induction Motor Performance Data**

Record # 16504

Typical performance - not guaranteed values

Winding: 34WG5724-R001		Type: 3410M	Enclosure: XPFC		
<b>Nameplate Data</b>			<b>460 V, 60 Hz: High Voltage Connection</b>		
Rated Output (HP)	0.25	Full Load Torque	0.75 LB-FT		
Volts	208-230/460	Start Configuration	direct on line		
Full Load Amps	1.4-1.3/0.65	Breakdown Torque	3.47 LB-FT		
R.P.M.	1725	Pull-up Torque	2.27 LB-FT		
Hz	60 Phase	3	Locked-rotor Torque	2.57 LB-FT	
NEMA Design Code	B	KVA Code	L	Starting Current	3.45 A
Service Factor (S.F.)		1	No-load Current	0.6 A	
NEMA Nom. Eff.	63	Power Factor	56	Line-line Res. @ 25°C	70.7 Ω
Rating - Duty	40C AMB-CONT		Temp. Rise @ Rated Load		

**Load Characteristics 460 V, 60 Hz, 0.25 HP**

% of Rated Load	25	50	75	100	125	150
Power Factor	23	33	43	54	60	68
Efficiency	40.1	55.5	62.5	64	64.9	64.5
Speed	1785	1772	1758	1743	1729	1713
Line amperes	0.64	0.65	0.66	0.67	0.74	0.79

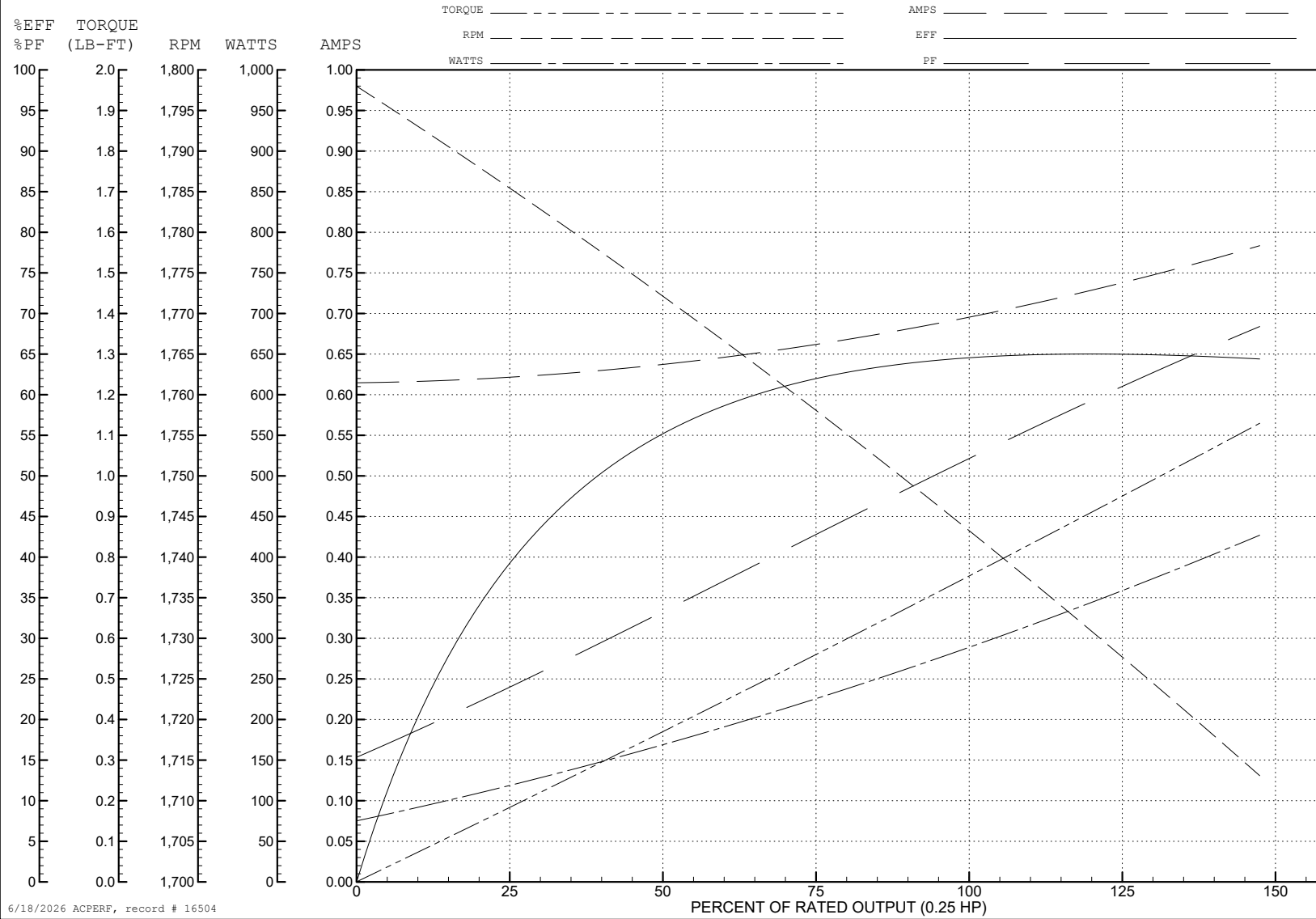
ABB Motors and Mechanical Inc.

WINDING # 34WG5724

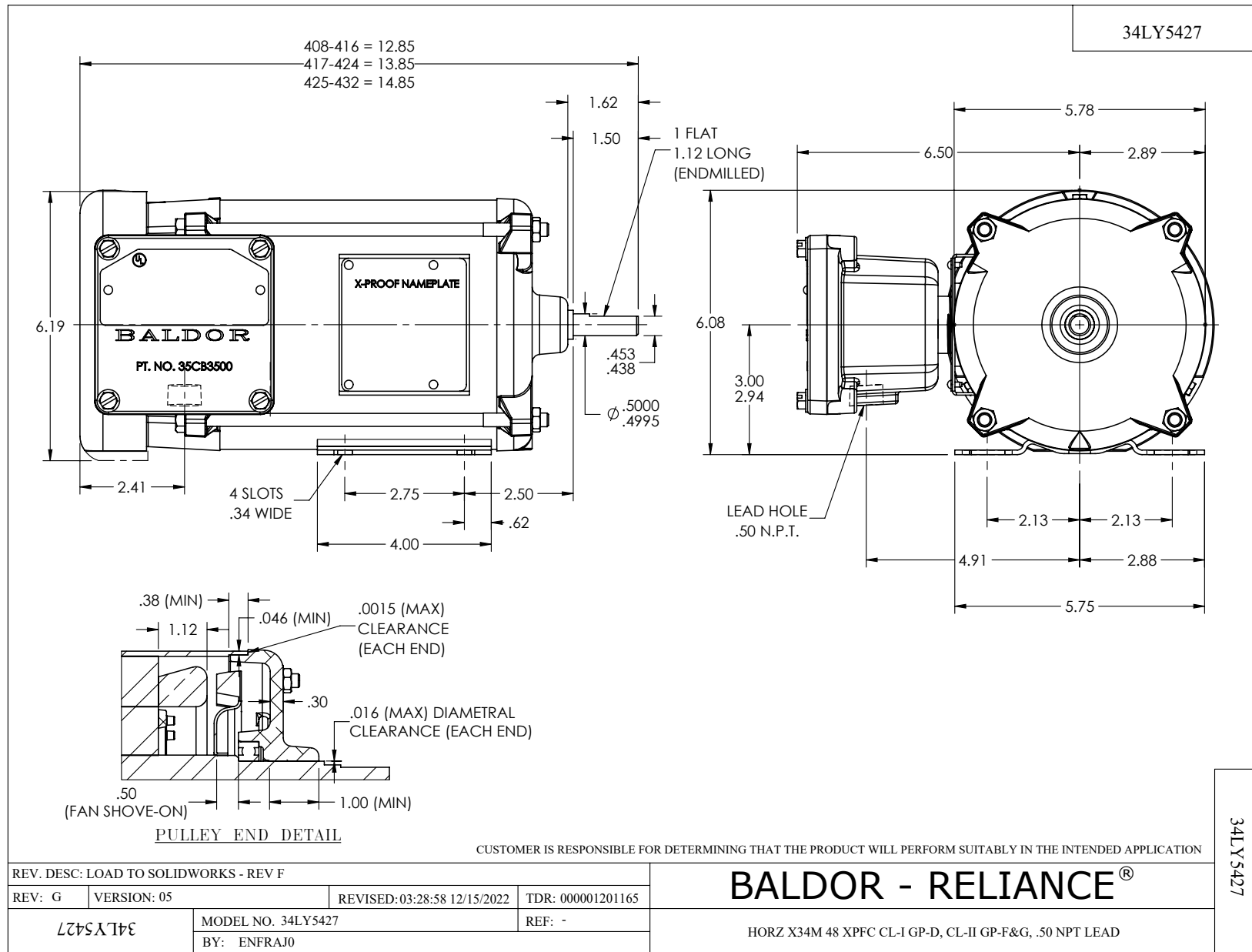
0.25 HP 3 PH 60 HZ 1725 RPM 460 V 3410M

Typical performance - not guaranteed values.

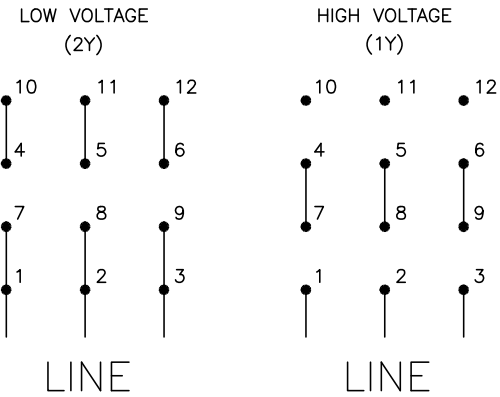
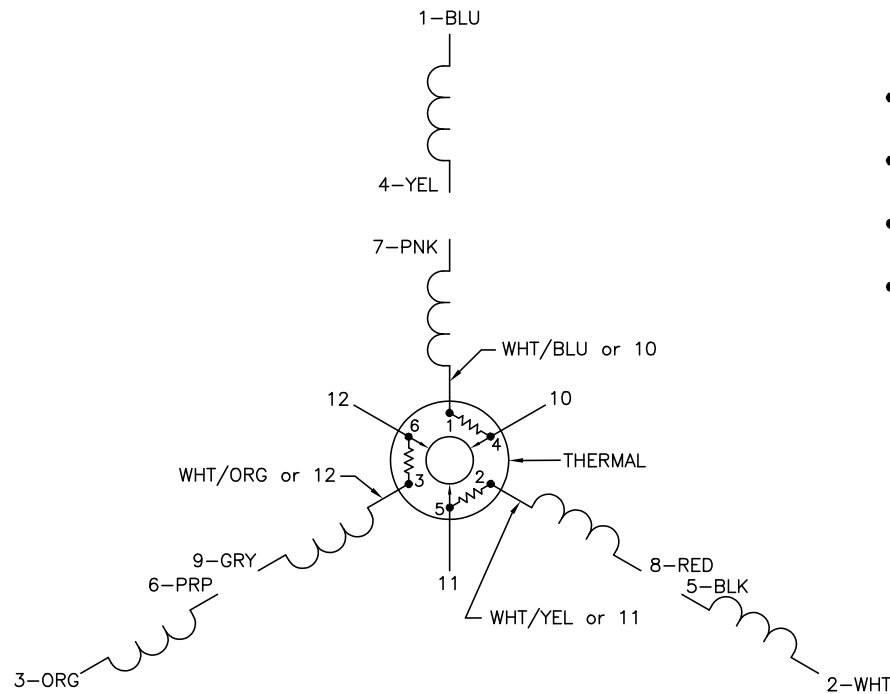
TORQUES (LB-FT): PO=3.47 PU=2.27 LR=2.57 LRA=3.45



6/18/2026 ACPERF, record # 16504



CD0007



- NOTES:
1. INTERCHANGE ANY TWO LINE LEADS TO REVERSE ROTATION.
  2. ACTUAL NUMBER OF INTERNAL PARALLEL CIRCUITS MAY VARY.
  3. LEAD COLORS ARE OPTIONAL. LEADS MUST ALWAYS BE NUMBERED AS SHOWN.

CD0007

REV. DESC: ADDED "CK" PLANT CODE			
REV. LTR: E	BY: EAH	REVISED: 05/06/99 17:1	TDR: 0181040
L00000		FILE: AAA00008370	MDL: -
		MTL: -	

**BALDOR ELECTRIC Co.**

3PH, DV, THERMAL, 12 LEADS