

BALDOR • RELIANCE

Customer information packet

XL21342

3HP, 1735RPM, 1PH, 60HZ, 213, 3740L, XPFC, F1

Class - CLI GP D; CLII GP F,G

Division - Division I

Specifications

Enclosure	XPFC
Frame	213
Frame Material	Steel
Frequency	60.00 Hz
Haz Area Class and Group	CLI GP D; CLII GP F,G
Haz Area Division	Division I
Motor Letter Type	Cap Start, Induction Run
Output @ Frequency	3.000 HP @ 60 HZ
Phase	1
Synchronous Speed @ Frequency	1800 RPM @ 60 HZ
Voltage @ Frequency	115.0 V @ 60 HZ 230.0 V @ 60 HZ
Agency Approvals	CSA UL
Ambient Temperature	40 °C
Auxillary Box	No Auxillary Box
Auxillary Box Lead Termination	None
Base Indicator	Rigid
Bearing Grease Type	Polyrex EM (-20F +300F)
Blower	None
Current @ Voltage	17.200 A @ 230.0 V 34.400 A @ 115.0 V
Design Code	L
Drip Cover	No Drip Cover
Duty Rating	CONT
Efficiency @ 100% Load	78.5 %
Electrically Isolated Bearing	Not Electrically Isolated
Feedback Device	NO FEEDBACK
Haz Area Temp Code	T3C
Heater Indicator	No Heater
High Voltage Full Load Amps	17.2 a
Insulation Class	F

Part detail

Revision	J
Type	AC
Mech. spec.	
Base	
Status	PRD/A
Elec. spec.	37WGA0037
Layout	37LY-000-362
Eff. date	02-22-2024
CD Diagram	CD0076
Poles	04
Leads	8#14
Proprietary	False
Created date	04-30-2021

Inverter Code	Not Inverter
IP Rating	NONE
KVA Code	K
Lifting Lugs	Standard Lifting Lugs
Locked Bearing Indicator	No Locked Bearing
Motor Lead Termination	Flying Leads
Motor Standards	NEMA
Motor Type	3740L
Mounting Arrangement	F1
Number of Poles	4
Overall Length	19.89 IN
Power Factor	71
Product Family	General Purpose
Pulley Face Code	Standard
Rodent Screen	None
Service Factor	1.15
Shaft Diameter	1.125 IN
Shaft Ground Indicator	No Shaft Grounding
Shaft Rotation	Reversible
Speed	1750 rpm
Speed Code	Single Speed
Starting Method	Direct on line
Thermal Device - Bearing	None
Thermal Device - Winding	Normally Closed Thermostat
Vibration Sensor Indicator	No Vibration Sensor
Winding Thermal 1	None
Winding Thermal 2	None

Nameplate

NP1426XPSL	
NO.	CC
SER.	
SPEC.	37-0000-0389
CAT.NO.	XL21342
HP	3 T. CODE T3C
VOLTS	115/230
AMPS	34.4/17.2
RPM	1750
HZ	60 PH 1 CL F
SER.F.	1.15 DES - CODE K
RATING	40C AMB-CONT
FRAME	213 NEMA-NOM-EFF 78.5
	PF 71
BLANK	NEMA MG-1 PART 5, IP54

AC Induction Motor Performance Data

Record # 99433

Typical performance - not guaranteed values

Winding: 37WGA0037-R001		Type: 3740L		Enclosure: XPFC	
Nameplate Data			230 V, 60 Hz: High Voltage Connection		
Rated Output (HP)	3	Full Load Torque	8.992 LB-FT		
Volts	115/230	Start Configuration	direct on line		
Full Load Amps	34.4/17.2	Breakdown Torque	33.1 LB-FT		
R.P.M.	1750	Pull-up Torque	20 LB-FT		
Hz	60 Phase	1	Locked-rotor Torque	31.8 LB-FT	
NEMA Design Code	- KVA Code	K	Starting Current	112.95 A	
Service Factor (S.F.)	1.15		No-load Current	10.5 A	
NEMA Nom. Eff.	78.5 Power Factor	71	Line-line Res. @ 25°C	0.38356 Ω A Ph 2.2154 Ω B Ph	
Rating - Duty	40C AMB-CONT		Temp. Rise @ Rated Load	61°C	
S.F. Amps	38/19		Temp. Rise @ S.F. Load	72°C	

Load Characteristics 230 V, 60 Hz, 3 HP

% of Rated Load	25	50	75	100	125	150	S.F.
Power Factor	34	51	63	71	76	79	74
Efficiency	64.7	76.2	79.4	79.8	79.2	77.6	79.4
Speed	1787.7	1775.8	1762.6	1749.1	1732.4	1713	1739
Line amperes	11.1	12.5	14.6	17.1	20.2	23.7	19

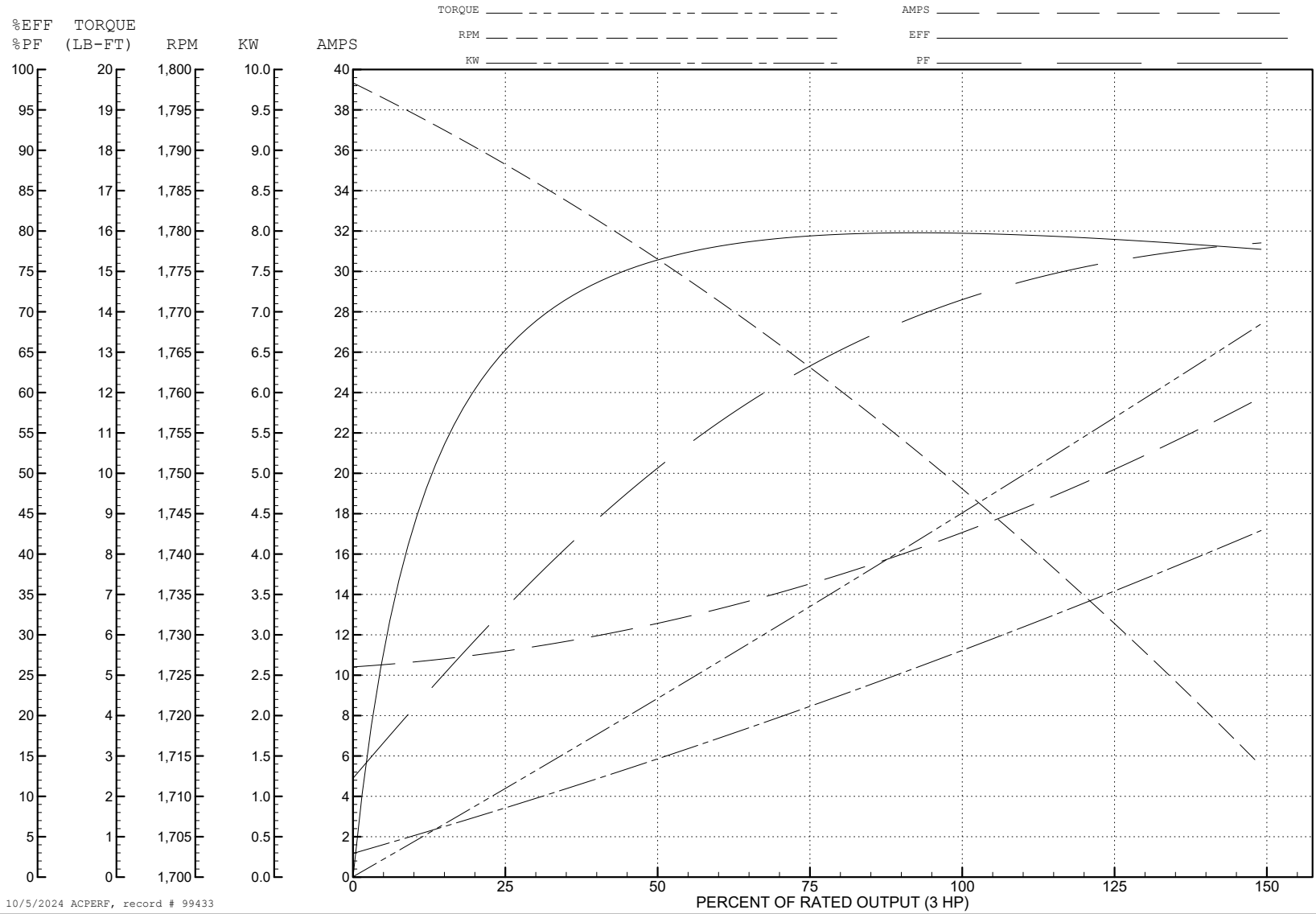
ABB Motors and Mechanical Inc.

WINDING # 37WGA0037

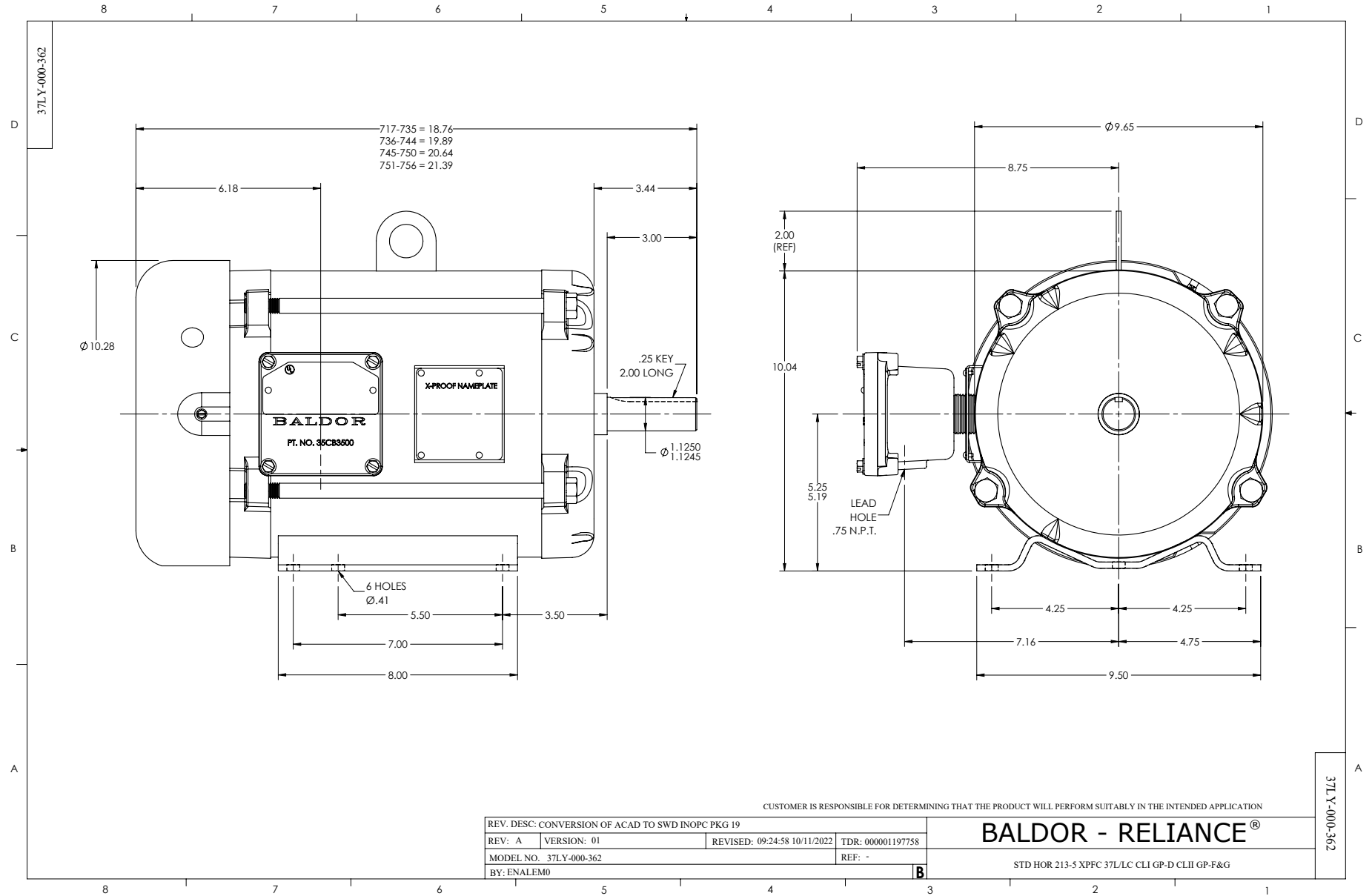
3 HP 1 PH 60 HZ 1750 RPM 230 V 3740L

Typical performance - not guaranteed values.

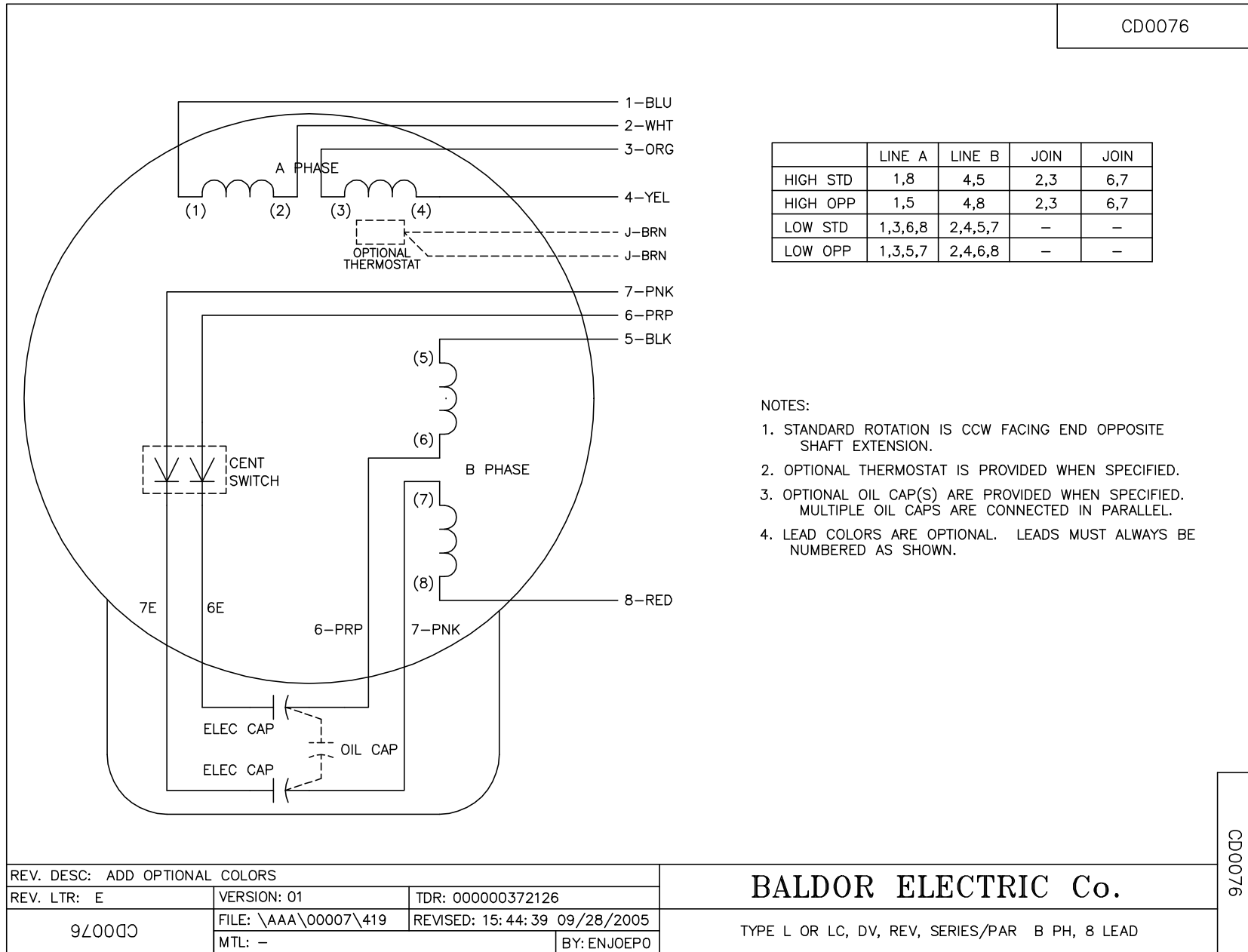
TORQUES (LB-FT): PO=33.1 PU=20 LR=31.8 LRA=112.95



10/5/2024 ACPERF, record # 99433



CD0076



NOTES:

1. STANDARD ROTATION IS CCW FACING END OPPOSITE SHAFT EXTENSION.
2. OPTIONAL THERMOSTAT IS PROVIDED WHEN SPECIFIED.
3. OPTIONAL OIL CAP(S) ARE PROVIDED WHEN SPECIFIED. MULTIPLE OIL CAPS ARE CONNECTED IN PARALLEL.
4. LEAD COLORS ARE OPTIONAL. LEADS MUST ALWAYS BE NUMBERED AS SHOWN.

REV. DESC: ADD OPTIONAL COLORS			
REV. LTR: E	VERSION: 01	TDR: 000000372126	
9Z0000	FILE: \AAA\00007\419	REVISED: 15:44:39 09/28/2005	
	MTL: -	BY: ENJOEPO	

BALDOR ELECTRIC Co.

TYPE L OR LC, DV, REV, SERIES/PAR B PH, 8 LEAD

CD0076